



IMUA POLENISIA

GO FORWARD POLYNESIA

THE VOICE OF THE POLYNESIAN CULTURAL CENTER

More PCC Reorganization Changes To Be Announced Next Week

By Reg Schwenke

In a renewed effort to make the Polynesian Cultural Center "more responsive" to employee needs, its guests and its own financial well-being, more PCC management and supervisory level changes will be announced next week.

PCC President Lester Moore, speaking to the Center's entire management team last week, clearly outlined the steps that would precede these changes. Specifically:

- The new reorganization will be announced no later than next Wednesday -- after he has carefully reviewed the changes with his Executive Council.
- In making these changes, Moore said the intent was to consolidate and simplify the Center's organizational structure -- and then eliminate redundant positions to avoid duplication of effort.
- The primary purpose, he continued, was to ensure the Center

will operate at its most efficient and effective capacity.

- Finally, he said it is imperative these positions are filled with the "right people...in the right place...at the right time."
- He charged the new Division heads to meet individually with each of their department managers to identify or review their organizational functions and to carefully evaluate the strengths, weaknesses, opportunities and threats (SWOT analysis) of their respective departments.
- The review and selection process will be conducted by the Center's Division heads with the utmost professionalism, integrity, fairness and with much prayerful consideration, he said.

Moore said that in his absence the Executive Council would have ample opportunity to review their organizational needs for the future.

"I have full confidence in them and feel this review period is absolutely necessary. This is to ensure fair and proper consideration is given to employees who may be affected by the changes," he said.

He added he is in daily contact with the Executive Council and will be here when the reorganizational changes are announced.

In addition to relocating his family from Minnesota to Hawaii, he will also meet with Elder Oaks, Elder Wirthlin and other Board members in Salt Lake City. Moore and his family will arrive in Hawaii tonight.

• In This Issue

Are you paying too much for your PCC medical insurance coverage? If you really want to find out, compare the three plans on Page 3. You must decide and act by November 30.

• In Coming Issues

A new Question and Answer column with the President. Send your questions -- anonymous if you choose -- to the president's office and they will all be answered as space permits.

IMUA POLENISIA

is published bi-weekly on payday by the Corporate Communications Division.

Editor
Allen Kroff

Graphics & Design
Marc Myer

PCC Names its First Female Board Member

by Allen Kroff

She is as well known throughout Hawaii for her community service as she is for her business acumen and entertainment success.

Indeed, if the Board's criteria was to select a successful and prominent Polynesian businesswoman in Hawaii with firsthand insights of PCC to also serve as an active advocate for its employees, she would be the best candidate.

"She" is Kalo Mataele Soukop, the first appointed female member of the Cultural Center's board of directors. She is also one of the Center's original village and show performers.

In addition to operating the successful Kalo's South Seas Revue in Honolulu, she operates an import-export business, a travel agency, a handicraft retail store and a weekly television program for Tongans in Hawaii.

A Temple ordinance worker, she also serves as a Primary and Sunday School teacher in Kahala Ward.

Kalo came from humble beginnings in Tonga, completed her college education and has used it to help her family and assist fellow Tongans adjust to a new culture and lifestyle.

Kalo attended Church College of Hawaii (CCH) from 1959, where she learned of the forthcoming Polynesian Cultural Center. She became part of a group of students that began promoting the Center by dancing at various locations in Honolulu.

Kalo received her degree in Business in 1962 and went to work as a Polynesian dancer at the International Marketplace.

In 1963, she was called to serve as a labor missionary at the just-opened Polynesian Cultural Center where she worked in the Tongan village for two years.



"From day one, I have always loved PCC.

"Even when I left, only my body left. My heart has always been here at the Center."

She has worked in Honolulu and Waikiki since. She has danced at the International Marketplace and at the old Queens Surf show.

In 1975, she opened her own show at the Hawaiian Hut-Ala Moana Hotel. "I just stopped dancing a few years ago." That same year, she married Harry Soukop, a retired Canada Pacific Airline pilot who now works in commercial real estate.

As a professional entertainer, Kalo appeared in films with Jack Lord

("Hawaii Five-O"), Mike Douglas, Elvis Presley, Glen Campbell and Donny and Marie Osmond.

Some of Kalo's notable accomplishments include: Receiving the Girl Scout Council of Hawaii's 1991 "Distinguished Alumni" Award; named "Woman of the Year" by the National Island Womens Association (Los Angeles); "Distinguished Service" Award from BYU-Hawaii; and "Prominent Alumnus" Award from Liahona High School in Tonga.

In her address at the Center's October 11 devotional, she stated: "PCC is a great place because of great employees ... nothing could succeed without good employees."

IT WAS MAGIC!

The night of October 25th was a "magical" night in the Center's Pacific Pavilion. Those who attended were treated to a spectacular array of illusions and magic acts, rap music entertainment and great family fun. Those who didn't missed out.

It was sponsored as a public service by the Honolulu Police Department's "No Hope In Dope" program and Laniloa Lodge as part of the Center's 28th Anniversary celebration.

The free employee show featured Kevin James, one of the country's top

magical comedy acts. He performs regularly at Caesar's Palace in Las Vegas and at Donald Trump's Taj Mahal Casino & Hotel in Atlantic City.

The opening act was performed by one of Hawaii's top magicians, Curtis Kam, who performs weekly at the Hale Koa Hotel.

You had to see these illusions to believe them -- and still not believe your eyes.

Next were the "No Hope In Dope" rap group comprised of HPD officers led by Leighton "Officer Honolulu" Kaonohi.

They had the house rockin'.

After 26 Years, "Aloha Oe" Ofa!

Ofa Talakai, one of the Center's longest serving employees, retired last week after 26 years at the Center.

The Talakai family was one of the first Tongan families to immigrate to Hawaii and they helped build the Center. In 1965, Ofa began working as a Coordinator of the Tongan Village with Sam Langi.

Throughout her career, she has worked with the Theater, the Seamstresses and has served as Head Seamstress since 1984.

For her retirement, she was provided a VIP canoe tour of the Center to say farewell to many of her longtime friends and PCC employees.

In addition to gifts from all the Center's village leaders,



she was given a beautifully carved clock from the Center. The presentation was made by Division heads T. David Hannemann and Reg Schwenke.

Malo Aupito Ofa, for your many years of service!

November is Open Enrollment

During the month of November, 1991, you may change from your current medical plan to one of the other plans that is offered by PCC. This change becomes effective January 1, 1992.

Please note that the three different plans have different types of coverage. You should have received a package of informational materials in the mail explaining the changes for 1992.

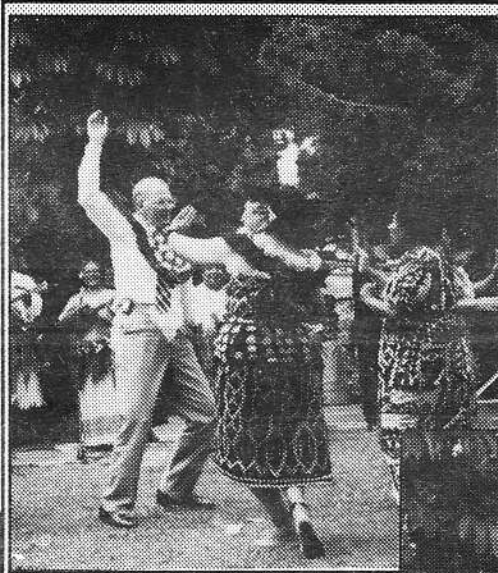
Premiums:

Deseret Healthcare Medical Plan A (All Islands)	Deseret Healthcare Medical Plan B (Oahu Only)	Kaiser (All Islands)
Monthly Premiums:	Monthly Premiums:	Monthly Premiums:
Your Employer Pays	Your Employer Pays	Your Employer Pays
Single \$136.46	Single \$127.38	Single \$135.62
Two Party \$268.38	Two Party \$255.08	Two Party \$261.28
Three or More \$430.92	Three or More \$413.68	Three or More \$392.34
You Pay	You Pay	You Pay
Single \$50.48	Single \$47.12	Single \$50.16
Two Party \$99.24	Two Party \$94.32	Two Party \$96.60
Three or More \$159.36	Three or More \$152.98	Three or More \$145.06

The premium rates listed above apply to active employees and their dependents. If you are not in this category (such as early retirees, surviving spouses, etc.), please contact Deseret Healthcare for premium rate information.

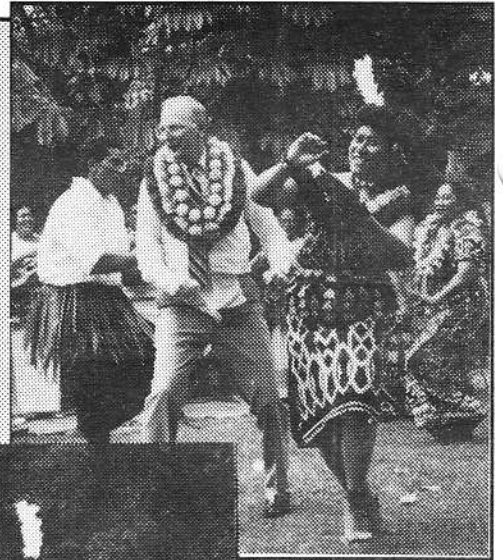
If you wish to change healthcare plans you must do so by November 30th! Contact Maka Obina #3195 or DMBA at # 293-3970

Photos by William Mahoni



Guess where these photos were taken?

Look for the answer at the bottom of this page.



Meet the the best PCC Village Greeters as determined this summer in the Village Training "Adventure"!



Charlotte Ferris
New Zealand



Isabel Petrano
Marquesas



Skylane Ishibashi
Hawaii



Sinave Williams
Mission Home



Wendell Moliga
Samoa



Rosina Yu-Hing
Tahiti



Meliame Huakau
Tonga

A.: At the Fijian culture day festivities several weeks ago. The Fijians were there en masse...even if they weren't captured on film!