



IMUA POLENISIA

Vol. 2 No. 9

July/August/September 1997

PRESIDENT'S MESSAGE

Fa'afetai Tele Lava

It is with humility that I express my personal thanks as well as those of the Board of Directors, management, and employees of the Polynesian Cultural Center to His Highness Malietoa Tanumafili II for his gracious gesture in bestowing a chiefly title and honor upon all of us in my investiture as Galumalemana. His warm interest in all that we strive to do here in the Center to preserve and perpetuate the traditions of Polynesian culture and to assist young Polynesians in their desire for higher education and work experience is a great honor for us. We appreciate his acknowledgement of our striving to incorporate both gospel values and correct professional principles into our representation of Samoan culture. From our hearts we thank him and his associates in the government of Western Samoa for the many years of good relations between us and hope to continue to enjoy the warm friendships we share. *Fa'afetai tele lava.* **Lester W.B. Moore**

On May 10, in an historic event marked by traditional ceremony and attended by hundreds of invited guests representing government, education, church and cultural institutions in Hawaii as well as in the Pacific, His Highness Malietoa Tanumafili II, Head of State of Western Samoa, bestowed the chiefly title, Galumalemana, upon PCC president Lester W.B. Moore. The investiture was a rare occasion inasmuch as the high title was bestowed on a non-Samoan, and the event brought together Samoan communities from all over Oahu and convened a Council of Chiefs which chose the kava circle participants by traditional debate.

Pacific dignitaries attending the ceremonies included the Hon. Afioga Tuala Tagaloa, Western Samoa Minister for Lands and Environment; American Samoa Senator Tofa Tama Matua Olo Letuli and his wife; Afioga Papali'i Audrey Malietoa, personal secretary to the Head of State; Dr. Afioga Leota AINU'u, personal physician; Afioga Tufuga Samuelu Atoa, public affairs director for the Church in Samoa; American Samoa Congressman Faleomavaega Eni Hunkin, and others.

In the kava ceremony held on the campus, Galumalemana Lester Moore was represented by his talking chief Faivaola Eric B. Shumway, President of BYU-Hawaii, while Vaifale Tevaga, Afioga Tau'ili'ili Su'a, Iuli



His Highness confers the title, "Galumalemana" upon Lester Moore, president of the Polynesian Cultural Center.

Leonard Peters, Mata'afa Mata'afa, and Seiuli Nuga served as talking chiefs for the Malietoa and his contingent. The numerous details associated with the event were capably handled by Leilua Logoitinu Apelu, PCC vice president of cultural presentations, assisted by Pulefano Galea'i, Hans Ta'ala, Fia Mau, Delsa Moe, Palauni Ma Sun, Fifita Unga, and Ivonna Mills.

While the ceremonies, pageantry, performance, gift-giving and feasting were impressive highlights throughout the day, of deeper significance is the fact that this traditional honor is another validation of PCC's uniqueness as a site of Polynesian cultural integrity and authenticity. This honor, along with President Moore's Tongan title, Mafifakapotu, bestowed by HRH Taufa'ahau Tupou IV just two years ago, further cement the cooperative relations the Center enjoys with Pacific nations and cultural communities today.



President Moore greets His Highness at Turtle Bay Hotel upon his arrival. Also greeting him is the general manager of the hotel, John Elford.



Young Samoan warriors await the arrival of the Malietoa.



PCC directors, President Dee Anderson and Kalo Soukop, stand with His Highness for the national anthem while the flag of Western Samoa is raised. Saluting at right is Police Inspector Faapoi.



Talking Chief, Okesene Ale, speaks during the investiture kava ceremony.



Samoan Community Aumaga present a pig for the Sua.



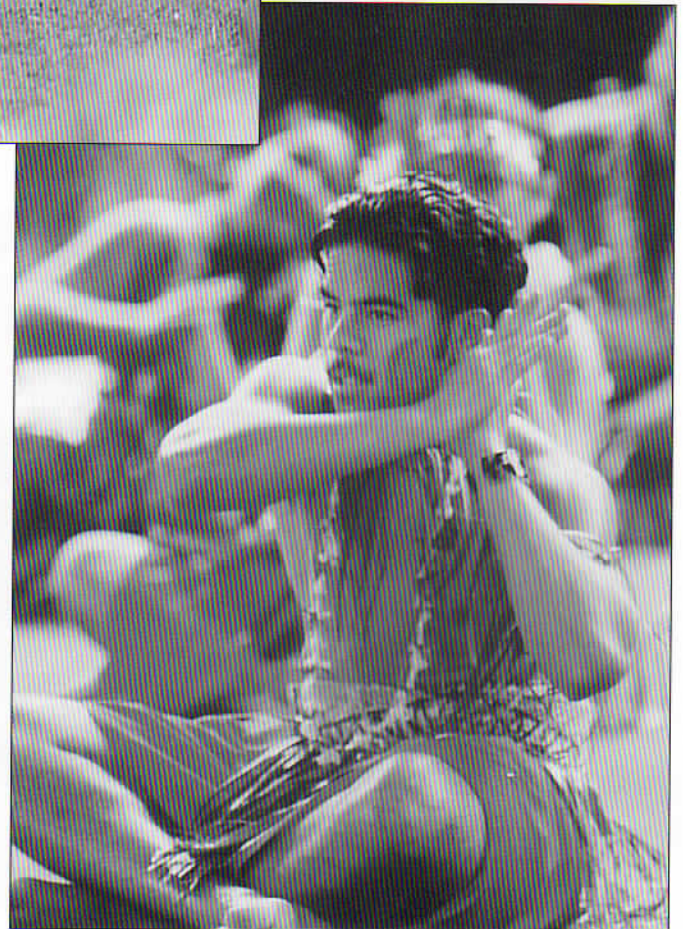
Samoan Community Aumaga present the green ava for the royal kava ceremony.



Alberta Letoa performs with community elementary school children in a dance during the feast following formal ceremonies.



Eugenia, Shoko, and Fa'afetai enjoy the opportunity to be a part of the ceremonies.



Jared Ava, a freshman at Kahuku High School, is proud to perform for the Malietoa.

The Samoan Community Choir sings the Samoan translation of "Onward Christian Soldiers."



Talking Chief, Vaifale Tevaga, speaks on behalf of High Chief Galumalemana. To the left is Iuli Leonard Peters.

Cultural Islands Director, Cy Bridges, chants for the Hawaiian group in approaching His Highness with gifts.





Elder Donald L. Hallstrom, Church Area Authority, accompanied by PCC Board Vice Chair Dee Andersen and Board member Kalo Soukop, presents His Highness with a koa framed print of the Savior.



Ni'i Toelupe, representing a daughter of a high chief, presents a monetary donation to His Highness.



Center employees Isa Tauliili, Nona Enesa, Vice President of Food and Beverage, and Losa Moore pose for a photo at the island feast.



Maori guests Millie TeNgaio, Marcie Mo'o, and Sue Settle enjoy the feast and entertainment.



A U.S. Marine Corp made up of servicemen of Samoan ancestry pose with U.S. Congressman, Faleomavaega Eni Hunkin, after participating in the investiture ceremony.



Minister Tuala Tagaloa enjoys an exchange of words with Vice Chairman of the PCC Board, Dee Anderson.



Faivaola Eric Shumway, president of Brigham Young University-Hawaii, acknowledges receiving the most prestigious cup in the royal Samoan kava ceremony.



Hawaii Temple president, T. David Hannemann, accompanies His Highness and Hans Taala after the investiture ceremony.



Galumalemana enjoys chiefly counsel from HF



Galumalemana Lester Moore relaxes with Leilua Logoitino Apelu at the conclusion of the investiture and feast.

**New High Chief,
Galumalemana, drinks the
sacred cup of kava beside
His Highness Malietoa
Tanumafili II.**



**Cultural Manager
Raymond Mariteragi
heads the Tahiti-
Marquesas entourage at
the gift-giving.**



Malietoa.



**His Highness gives HRI presi-
dent and CEO, Dan Ditto,
advice on playing the next hole
during a day of golf and relax-
ation.**

“We Are Samoa” and “World Fire Knife Championship”

Competition was stiff for both the “We Are Samoa” high school cultural games and the World Fire Knife championship held in conjunction with the visit to PCC by Western Samoa’s Head of State, HRH Malietoa Tanumafili II in late May.

Fire Knife winners were:

Junior Competition

- 1st Place, Sakaio Pupualii, Western Samoa
- 2nd Place, Salatielu Brown, Salt Lake City, Utah
- 3rd Place, Jotham Slade, Maui, Hawaii

Senior winners

- 1st Place \$4,000 prize, Pati Levasa, Western Samoa
- 2nd Place \$2,000 prize, David Galea’i, Laie, Hawaii
- 3rd Place \$1,000 prize, So’o Tufaga, Hauula, Hawaii

Semi-Finalists, \$500 prizes:

- Sielu Avea
- Junior Avea
- Ah Chew Tafiti
- Adam Kenagy
- Steven Silulu
- Junior Faitau



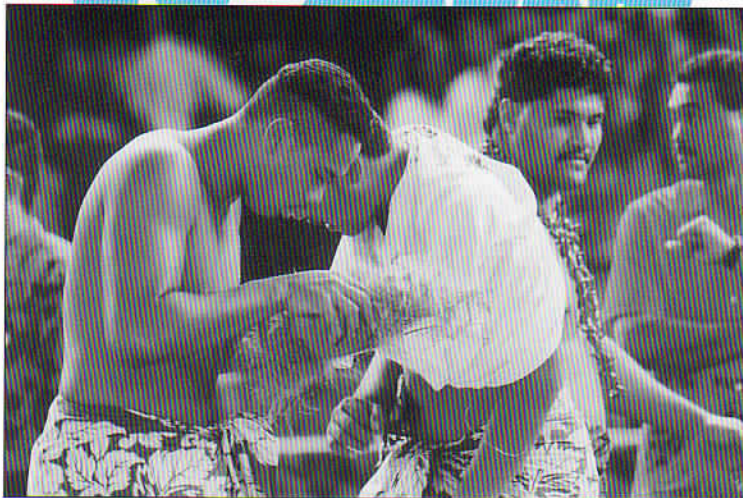
Pati Levasa, 1997 World Fire Knife champion, holds his \$4,000 check with Galumalemana Lester Moore (left), Ole Letuli, and Vili Fehoko.



Galumalemana escorts HRH Malietoa Tanumafili II to the World Fire Knife Competition. Seated behind is Jeanie Moore and Police Inspector Faapoi.



Na Hoku Hanohano Award winner, Keali'i Reichel entertains his fans with past hits and new songs. His album, Kawaipunahele, has been on the top ten in Hawaii for the last two years. We look forward to his new up-coming album to be released in July.



A Samoan high school student attempts to start fire in a friendly competition during the "We Are Samoa" festival.

O'Brien Eselu charms the audience with hits from his latest CD: "Ke Kumu" which also has been on the top ten on KCCN radio.



"We Are Samoa" Overall Winners:

- Kaimuki High School
- Waianae High School
- Aiea High School

Speech - Samoan Traditions

- 1st Place \$300 prize, Kaimuki High School
- 2nd Place \$200 prize, Leilehua High School
- 3rd Place \$100 prize, Waianae High School

Coconut Husking

- 1st Place \$75 prize, Waianae High School
- 2nd Place \$50 prize, McKinley High School
- 3rd Place \$25 prize, Farrington High School

Coconut Husking

- 1st Place \$75 prize, Farrington High School
- 2nd Place \$50 prize, Kailua High School
- 3rd Place \$25 prize, Leilehua High School

Basket Weaving

- 1st Place \$75 prize, Campbell High School
- 2nd Place \$50 prize, Kahuku High School
- 3rd Place \$25 prize, Leilehua High School

Fire Making

- 1st Place \$75 prize, Kahuku High School
- 2nd Place \$50 prize, Farrington High School

Banana Peeling

- 1st Place \$25 prize, Farrington High School
- 2nd Place \$15 prize, Aiea High School
- 3rd Place \$10 prize, McKinley High School

Banana Peeling

- 1st Place \$25 prize, Kaimuki High School
- 2nd Place \$15 prize, Nanakuli High School
- 3rd Place \$10 prize, Aiea High School

Sasa

- 1st Place \$800 prize, Kaimuki High School
- 2nd Place \$400 prize, Waianae High School
- 3rd Place \$200 prize, Farrington High School

Mauluulu

- 1st Place \$800 prize, Waianae High School
- 2nd Place \$400 prize, Kaimuki High School
- 3rd Place \$200 prize, Nanakuli High School

Tausaluga

- \$500/gold bracelet prize, Kahuku High School

Musicians

- \$50 prize, Waianae High School



Kahuku High School was well represented at the "We Are Samoa Festival". Here, Kazenalee Magalei Wong performs center-stage in the Pacific Theater before a standing room only crowd.

Guest Letters

Dear President Moore:

May I take a few minutes to express my appreciation and love for the Polynesian Cultural Center. All that I am and have been able to accomplish is the result of my work program at the PCC and Church College of Hawaii. The yearly visits that PCC and BYU-Hawaii representatives make to American Samoa to interview and discuss admissions and a work program are so valuable. "When a student goes to college that student must work." This was Brother Taurima's central theme during his last visit. It was a wonderful theme. Parents and interested students alike really tuned in to what he said. He had students audition – sing and dance – they were extremely nervous in the beginning, but they did it! Afterwards, their comment was, "I really liked that – I hope I can work at PCC."

Brother Taurima was able to broaden parents' and students' perspectives of the PCC and the importance of holding to one's culture and heritage. I have heard that several students planning on BYU-Hawaii in September are taking a real interest in their cultural background now. Good for them!

Thank you for allowing us the privilege and opportunity to have yearly visits from PCC personnel. Not only do these brethren interview prospective students (and their parents) about their cultural qualifications, but they also visit our high schools, American Samoa Community College, early morning seminars, youth firesides, and alumni meetings. Their message at these gatherings is: "What the Polynesian Cultural Center offers students attending BYU-Hawaii."

Once again thank you for allowing PCC to be a part of the facilitating program.

Sincerely,
Glynda A. Magalei
Former PCC dancer and tour guide, American Samoa

Dear PCC:

Thank you for the friendly and great cooperation from your ticket staff and customer service person, Wanda Afualo. She helped coordinate late canoe rides (7:00 pm) for 56 people and coordinated late arrivals for the luau for five people at 6:55 pm. The canoe people were terrific and pleasant. They helped coordinate the Tongan Village to be there at 7:15 pm singing for us. Thank you. This is a tour sale from PCC. We normally just transport visitors but our style is customer service – and your customers were all very impressed and happy. Mahalo,

Peter Kama
Enoa Tours driver, May 13, 1997

To Whom it May Concern:

My husband and I are LDS. We have always heard of this place – many non-members insisted it was the best event on the island! The hilarious chief (so dignified simultaneously!) – the variety of presentations – the beauty of all the dancers – the authenticity of the huts and decor – the skills portrayed – the yummy food and warmth of the hosts – all have made this a memorable day! We loved it! (Pleasant guides throughout the park, too).

Mrs. Liechty
California, May 6, 1997



Dear Sirs:

I just want to compliment the ushers who worked the night show today. I was in a section where there were lots of students from somewhere (not BYU) who were very loud and obnoxious, and the ushers did a beautiful job trying to keep them quiet and in control so as not to disturb the older guests in our section. I just think they did a great job!

Mr. Gruber, May 16, 1997

Thank You PCC:

This is our first family trip to Hawaii. We were looking forward to this trip a long time ago. Unfortunately, our daughter, Monica, who is 16 months old, came down with a high fever while we were here. Vivian from First Aid helped us tremendously. She took us to her office, took care of Monica and then she showed us to the theater for the show which we were late for. To ensure we did not miss any fun, she gave us a video tape, *Horizons*. She really gave us whole-hearted help which we badly needed. We greatly thank her for her help. I hope you will keep her here forever. I wish to see her again next time I visit.

Meina Liang,
California

Dear Ms. Naeole,

I am a 4th Grade teacher at Ala Wai Elementary School and we recently took 71 students and 16 chaperones to your site in Laie. I just wanted to tell you that despite the rain and cold weather, all of us had the most fantastic time. All of your employees were more than courteous and so informative and patient with our students. There is not a single thing I can think of that was bad. It was the first time for many of our students to visit your facility and one of them said when he grows up he would like to work there. All the villagers, canoe paddlers, restaurant workers, guides between villages, and everyone were truly helpful. We did not feel like it was just another tourist spot. It was entertaining, educational, and most of all, we felt sincerely welcome. You can be sure that we will return with friends and family.

Bernice Kalama
DOE

To the Polynesian Cultural Center:

I want to thank you for a very favorable visit I had to the Cultural Center. I was part of the Ambassador program. Ivana was my guide. She was wonderful. Because I was having a difficult time walking the distance necessary she suggested a wheelchair. I accepted her suggestion. She was so very kind, for she pushed me wherever I needed to go. I tried to give her a tip but she refused. I have been to the Center three or four times prior to this trip, but must say this was the best. The Ambassador program and Ivana made it the best. Keep up the excellent work. Please let Ivana know how much I appreciated her service and company.

Very Sincerely,
LaVar Sorensen

To Guide Ivana:

Thank you so much for taking us through the PCC. We had such a nice time. I especially want to thank you for your compassion that you showed me when I couldn't sit any longer because of my back. I was so impressed you walked away from a conversation to see how someone else was doing. I don't know how old you are, but for you to set aside your own interests for another is so Christ-like. John Walker, who recommended you, appreciated that you were so quick-witted, but I think you showed to our group much, much more. You took your time to make us headbands (I'm sure they have a better name), and asked for someone to participate in Marquesas, and just genuinely took wonderful care of us. We wish you the best in attending BYU in Utah some day. We think you are a wonderful young lady.

Warm Regards,
Bruce and Kathy Sloth

New Food Preparation and Distribution Center Opened

Two facilities important to Laie and the state were dedicated this past month in a ceremony attended by Hawaii state officials, management of both facilities, and community leaders and residents. The Laie Water Reclamation Facility and the PCC Food Preparation and Distribution Facility are two state-of-the-art projects which, with the latest technology, far exceed existing facilities in Hawaii.

Our new food preparation and distribution center can serve 6,000 meals a day on a regular basis and has already served an 8,000 meal day this year. The facility, a \$4 million investment in the future of Hawaii's tourism industry, exceeds all state environmental requirements and is an example of the latest energy-efficient and environmentally-friendly food facilities.

The two-storey center has 16,000 square feet of floor space, giving food service workers ample preparation space as well as freezer and cooler storage and staff offices. The project was led by Elder Lloyd D. Hunter and is managed by Winona Enesa and her staff.

Community leaders, Theresa Bigbie, Laie Community Association president; Eric B. Shumway, BYU-Hawaii president; Jack Hoag, Hawaii Reserves Inc., chairman; Dan Ditto, HRI president and CEO; Winona Enesa, vice president of PCC Food Services; and T. David Hannemann, president of the Hawaii Temple, untied a maile lei to officially open both facilities.



Birthdays

JULY

1	Naomi Kurihara	15	Harold Toelupe
1	Davis Tiu Pili	16	Daniel Eliaba
1	Verna Tonga	16	Moses Kabo
2	Franklin Kamae	16	Susan MacGregor
2	Samuela Langi	16	Nephi Setoki
2	Dallin Muti	16	Patrick Yim
2	Lolesio Patea	17	Premvathu Arasu
2	Samita Tanuvasa	17	Eimana Jonassen
2	Joseph John Te'o	17	Ricardo Ribeiro
3	Yvette Aivalu	17	Iraani Bridges
3	Roy Roger Evans	20	Jason Hanson
3	Mi-jin Lee	21	Jeremy Apuakehau
3	Oyun Rentsen	21	Victor Daguio
3	Charlotte Savea	21	Tipa Galeai
3	Hee Jeong Seo	21	Barbaratte Lei
3	Apimeleki Turaga	22	Clayton Cabebe
4	Robert Akoi Jr.	22	Taeaelelei Leitupo
4	Tala Faamoe	22	Jayde Moors
4	James Lonoehu Kamae	22	Spencer Tavete
5	Kesi Afalava	22	Kolokea Terukina
5	Rachel Ballard	23	Silina Aina
5	Kahokuokekai Kamakeeaina	23	Bayasgalan Mijiddorj
5	Delsa Moe	24	Logoitino Apelu
5	Fealofani Moors	24	Christina Cummings
5	Lepolo Kefu Paea	24	Kim Kaimana
5	Anthony Perez	24	Fatuimoana Tuifua
5	Lauri Reijonen	25	Iulai Faleolo
5	Hyun-Jung Yi	25	Tama Halversen
6	Eric Durtro	26	Kaija Rachael Flake
6	Nau Lavaka	26	Shulamit Miriam Kakau
7	Rebecca Lei	26	Theresa Warner
7	Jin Young Seong	27	Allen Aguilar
7	Eseta Toelupe	27	Andrea Gillette
8	Erito Jahana	27	Kuata Maiava
8	Eun-Oak Kim	27	Charlene Shelford
9	Osborne Stephen Ale	28	Chanon Nakornchai
9	Jerusha Magalei	28	Asena Ramatalava
9	Glenda Ruth Marshall	29	Dominador Acoba
9	Teisa Palu Viokaleti	29	Shingo Kimura
9	Kekoa Ahuna	30	Ryan Beal
10	Joshua Moeai	30	Siaosi Lautaha
10	Claudine Paheroo	30	Peni Tagoa'i
11	Christopher Steven Nautu	30	Levi Wilmott
11	Robert Tuufuli	31	Helen Sappington
12	George Kaka		
12	Sione Lauaki		
12	Mamoe Sanerivi		
12	Lusitania Uhi		
12	Gene Kwan Yong		
13	Douglas Faataitai		
13	Virginia K. Ridder		
13	Jared Kealii Pere		
13	Rosalyn Nicola White		
14	Battugs Chadraa		
14	Wei-Chun Chen		
14	Allen Tevaga		
15	Merehani Parker		

AUGUST

1	Lance Arakaki	17	Carol Ho
1	Li-Chen Huang	17	Taliilagi Soliai
1	Travis Mitchell	17	Tofa Unga
1	So Wa Ngai	18	Peter Crisler
1	Faleola Ofahengaue	18	Hideto Katayama
1	Harvey Olsingch	18	Soowan Kim
2	Albertini Candari	18	Francis Mapuhi
2	Raymond Mariteragi	18	Rie Shimizu
2	Chris Wilson	18	Isapela Tauillili
2	Kim Leong Yong	19	Tehina Moo
3	Leonard-Max Ah Mu	19	Jaclyn Pitts
3	Jennifer Ho	19	Sarah So
3	Benny Kai	19	Mathew Widman
3	Seira Moors	20	Folosielu Avea
3	Gilbert Tunutu	21	Cynthia Balsler
4	Kupa'a Oleole	21	Konrad Perriton
5	Ellen Gay Dela Rosa	21	Isabelle Tahua
5	Aneti Gatoloai	21	Yuki Tanaka
5	Taketoshi Machi	22	Sarah Kent
5	Mele Pasina	22	Lolofi Mataafa
5	Nicole Sam-Yiou	22	Teresa Ramos
6	Jeannie Goodpaster	22	Bertha Samoa
6	Donna-Marie Mason	23	Temanuata Hunkin
6	Julie-Anne Mason	23	Kevin Molale
6	Thomas Muaina	23	Vernon Soga
6	Shizuno Nagai	24	Itayu Chirombe
7	Stephen Crowell	24	Tielynn Chislom
7	Anna Marie Logan	24	Su-Kyoung Kim
7	Keiko Masuda	24	Pulou Wright
8	Karewa Shelford	25	Tammie Fonoimoana
9	David Akanoa	25	Gerald Hood
10	Rohan Beal	25	B.J. Lee
10	Rebecca Faatau	25	Teri Montgomery
10	Evelyn Malea	26	Suelan Akana
10	Lisa Takara	26	Milton Kaka
10	Nii Toelupe	26	Lai Wah Lau
11	Hiroko Kobira	26	Ryan Olsen
12	Kyuutae Lee	27	Ilaisaane Latu
12	Tom Mariteragi	27	Ienraku Maunga
12	Clarita Parra	27	Maureen Tuia
12	Mardy Tandiman	27	Rosina Yu-Hing
12	Siaosi Tuihalangie	28	Faaeteete Apelu
13	Pepe Faleolo	28	Lawrence Apo
13	Luisa Finau	28	Natasha Gillette
13	Tala Galeai	28	Jack Ofia
13	Logan Gillette	28	Kei Osaka
13	Fiavivini Talataina	28	Siope Teumohenga
14	Aokuso Avea	29	Liufau Tuifua
14	Joseph Chu Sing	30	Talagu Ah-Hoy
14	Emosi Damuni	30	Jose Cheung
14	Cynthia Maio	30	Birlinda Makoni
14	Quincy Satini	30	Aleksander Naluai
14	Ti-Li Toh	31	Uati Afele
15	Roy Barnhill	31	Moroni Alvarez
15	Saori Yanagihara	31	Irene Boateng
16	Gilberta Ernestburg	31	Klyde Kaimana
16	Samuelu Tuiolemotu Jr.	31	William Tenney
			Olive Tuiono

Sterling Scholar Awards

SEPTEMBER

1	Maugasola Edwards	17	Fuatia Salanoa
1	Tahia Kohumoetini	18	Regina Pasi
1	Jeong Suh Na	18	Cynthia Rapu
2	Corazon Atoba	18	Mervina Sheffet
2	Cheryl Bhan	18	Suli Tevaga
2	Leon Maruhi	19	Roma Craig
2	LaRae Mortensen	19	Meileen Lau
2	Joel Fraser	19	Lai Yung Lung
3	Danilo Cruz	20	Lee Frazee
3	Shu-Fen Li	20	Davaajargal Gendenjamts
3	Albert Nihipali	20	Kathryn Tolleson
3	Adiloo Paongo	20	Melenaite Tovo
4	Fata Fiaui	20	Scott Tyra
4	Antone Haiku	20	Monchaya Wanna
4	Weerawan Kheanpakdee	21	Sepiuta Ofa
4	Paul Rama	21	Manu Olevao
4	Shoko Tanzawa	22	Marcia Bowser
4	Benson Tevaga	22	Fatai Feinga
5	Donny Alaiaasa	22	James Siilata
5	Julitha Alik	23	Grace Akanoa
5	David Cole	23	Sheena Alaiaasa
5	Julia Maeva	23	Falealii Atuaia
5	Josaia Tevaiqia	23	Alope Faamoe
5	Freddy Vongue	23	Barry Patane
7	Melissa Lewis	23	Tsendsuren Tumnee
7	Reena Prasad	24	Auria Marea
7	Maria Savelio	25	Claudine Foliaki
8	McKay Ernestburg	25	Vance Moe
8	Enerii Inatoa	25	Serafina Sau'i'a
8	Robert Kaitoku	25	Enese Tauiliili
8	Kaleokalani Teriipaia	25	Jeannot Tchan
9	Dennis Lindley	25	Kekoa Terukina
9	Bernadette Toyama	26	Dawnmoana Buckingham
10	Misipati Fiu	26	Christine Yong
10	Urima Nonu	27	Shelly Huang
10	Johana Tamoina	27	Bruce Taimana
11	Olive Mili	27	Urelmaa Tsolman
11	Takuya Ohki	28	Douglas Christy
12	Karni Arha	28	Maurice Moo
12	Luisa Katoa	28	Mariaha Pita
12	Uluave Tuifua	28	Jaynas Prasad
13	Herb Podeszwa	28	Liang Zhang
14	Larissa Ieremia	29	Wanda Afualo
14	Dorian Moe-Vineula	29	Wiwini Hakaraia
14	Laloata Motu	29	Kehaulani Oleole
14	Rosa Nelson	29	Ana Taione
14	Ernest Vitinavulagi	30	Phyllis Tavete
15	Jed Aplaca		
15	Colleen Skousen		
16	Kenneth Nelson		
16	Esward Pula		
16	Tony Soliai		
16	Jennings Tuala		
17	Veamoni Lautaha		
17	Kilisitina Moala		
17	Victor Narsimulu		
17	Adam Palmer		

Sixty-five high school scholars were finalists in the eleventh annual Sterling Scholar Awards program held recently in PCC's Pacific Theater. Delsa Moe, state coordinator of the Sterling Scholar program and director of the Center's theater department, announced that some 285 senior students from high schools throughout Hawaii applied for the awards this year. She expressed appreciation for the judges, drawn from all professions and educational levels in the state, who donate their time and expertise to examine the students' portfolios of work and interview them in making their judgments. The judges, she observed, are very busy people and also extremely well qualified to assess the applicants' scholarship, accomplishments, and outstanding attributes.

Students from the local Kahuku High School were winners, including first place getters Bryant Smith for Social Science and Moana Minton for English. Luana Ogawa earned second runner-up in Foreign Language; Rosalind Betham was a finalist in the Family and Consumer Science category; and Linda Furuto was a finalist in the Business Education category.

Joining PCC in title sponsorship of this annual program are DFS Hawaii, First Hawaiian Bank, NBC Hawaii News 8, and the Honolulu Star Bulletin. They are supported by category sponsors DFS Hawaii for Business Education and Foreign Language awards; Host Marriott Services Corp. for Family and Consumer Sciences; Lokelani Lindsey for Hawaiian Studies; James Koshiba, attorney, for Speech and Drama; Peat Marwick for Mathematics, and American Express for English. In addition, sponsors Clarence Lee design, Pizza Hut Hawaii, Roberts Hawaii, Aloha Airlines, Rodeway Inn-Hukilau Resort, Harbor Graphics, Ogilvy and Mather Hawaii, and the Turtle Bay Hilton Golf and Tennis Resort all provided goods and services.

The Sterling Scholar Awards program in Hawaii, which began in 1987, awarded a total of \$112,000 in cash scholarships to the 1997 winners.



Calendar

JULY

Thu.	3	Strategic Management Workshop 8:30 - 11:00 a.m., Gateway Overflow
Fri.	4	Independence Day (Holiday)
Mon-Sat.	7-12	Tahiti/Marquesas Cultural Week
Mon.	7	BEC meeting, Alexander & Baldwin, 12:00 p.m.
Tue.	8	Strategic Management Workshop 8:30 - 11:00 a.m. Gateway Overflow
Wed.	9	Farewell for Elder & Sister Otteson and Elder & Sister Rasmussen
Wed.	9	Kupuna Dinner, Old Luau Area
Thu.	10	Strategic Management Workshop 8:30 - 11:00 a.m., Gateway Overflow
Thu.	10	Annual Hawaii Chamber of Commerce 11:30 a.m., Hilton Hawaiian Village
Thu.	10	ALC Meeting - PCC - 12 noon
Fri.	11	Jr. Guides - 9:30 a.m.
Fri.	11	Pioneer Ball, PCC Ali'i Luau 8:30 p.m. - 12:30 p.m.
Thu.	17	Junior Guides - 9:30 a.m.
Sun.	20	Musical Fireside, Pacific Theater 6:00 p.m. - 8:00 p.m.
Sun.	20	Board of Directors Fireside
Mon.	21	Board of Directors Meeting
Fri.	25	Junior Guides - 9:30 a.m.
Tue.	29	Elder Robert Hales - VIP
Tue.	29	Junior Guides - 9:30 a.m.
Wed-Sat.	30-Aug 2	BYUH Education Week
Thu.	31	Junior Guides - 9:30 a.m.

AUGUST

Tue.	5	Strategic Management Workshop 8:30 - 11:00 a.m., Gateway Overflow
Thu.	7	Strategic Management Workshop 8:30 - 11:00 a.m., Gateway Overflow
Mon.	11	ALC Meeting, BYUH - 12:00 noon
Tue.	12	Strategic Management Workshop 8:30 - 11:00 a.m., Gateway Overflow
Thu.	14	Strategic Management Workshop 8:30 - 11:00 a.m., Gateway Overflow
Sat.	23	Promo Team returns from China
Wed.	27	Sr. Management Team Update Meeting 8:00 - 12:00 noon
Wed-Fri.	27-29	Operating Plan 1998 Sr. Management Team
Sat	30	Moanikeala Hula Auana Keiki Festival (Special Events)

SEPTEMBER

Wed 17	Sr.	Management Update Meeting 8:00-12 noon
Wed-Fri	17-19	Operating Plan Review Senior Management Team
Fri	19	Jr. Guides - 9:30 a.m.
Tue	23	Jr. Guides - 9:30 a.m.
Thu	25	Nature Sunshine buy-out Convention group of 2,000
Fri	26	Jr. Guides - 9:30 a.m.
Mon	29	ALC meeting - PCC - 12 noon
Tue	30	PCC Team mtg - 10:00 a.m.