



KA LEO O POLENIKIA

Ka Leo O Polenikia
is published by the Public Relations &
Advertising Division of the Polynesian
Cultural Center.

Executive Editor

Reg Schwenke

Editor

Rubina Forester

Design & Printing

BYU-H Press Services

PCC Officer Group

Lester W.B. Moore

T. David Hannemann

John Muaina

Reg Schwenke

Les Steward

Larry Yuen

ROYAL VISIT GARNERS FRONT PAGE COVERAGE

The royal visit by His Royal Majesty Taufa'ahau Tupou IV, the king of Tonga, garnered front page coverage in last Sunday's Honolulu Advertiser. It was the first PCC front page banner story ever.

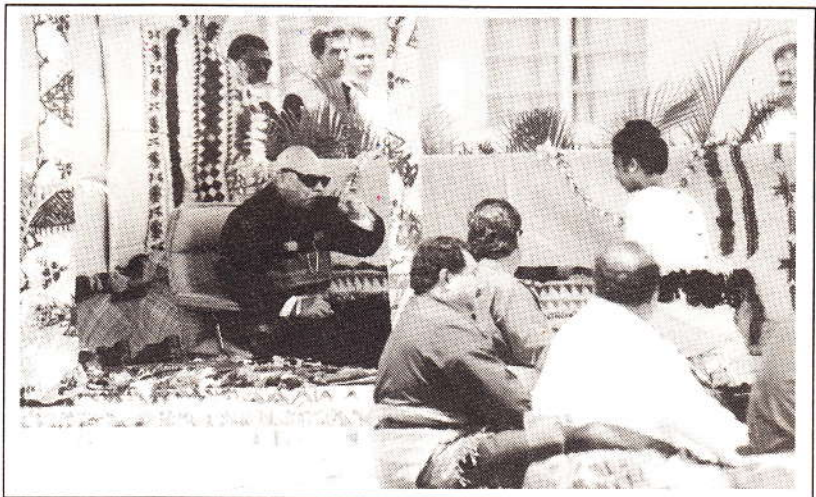
In Hawaii to preside over a traditional kava ceremony in which he invested upon PCC President Les Moore the chiefly matapule title, *Mafi Fakapotu*, King Taufa'ahau was ceremonially greeted and conducted through the streets of Laie to the BYU-Hawaii small circle where he was seated under a traditionally-decorated canopy of fine mats and tapa.

The king was accompanied by his wife, Queen Halaevalu

Mata'aho, and his entourage included his daughter, Princess Pilolevu and her family.

The pageantry and cultural aspects of the kava ceremony proved highly significant as never before has a Tongan monarch made such a visit nor bestowed such a title on a foreigner outside of Tonga.

It also affirmed PCC as a repository of Polynesian traditions and history. The feasting and dancing following the official investiture melded Tongan communities from around Oahu in cooperation with PCC and BYU-Hawaii and provided an unforgettable afternoon for over 3,000 guests, onlookers and participants.



King Taufa'ahau Tupou IV drinks the first cup of kava offered during the royal kava ceremony.

Special Mahalo

Special thanks are extended to all those who made the royal visit, investiture, feast and entertainment a dignified, cultural event. The cooperation and sense of community was evident in the ceremonies and presentations.

DRUMS OF POLYNESIA

Bits and Pieces...

Best Wishes

...to Osamu Ozaki who is resigning as Vice President of Eastbound Sales to begin his own marketing consulting business. He will be representing several clients including PCC. Ozaki has been with the Center since 1973. He was formerly the Guides Manager. He and his family will continue to live in Laie.

Reunion Time

Not only has the Center hosted the 30th Anniversary alumni, it has also welcomed several family reunion groups this past month. All have kin working at PCC. Enjoying the demonstrations, activities and shows



were the 34-strong Ah Ching clan, the 250 Uluave relatives, the 88 Lio and Lili Brown descendants and the members of the Galea'i connection.

PCC New Home for Fish

Due to the undergoing State Capitol renovations, barrels of tilapia and 3 other kinds of fish were transferred from their Capitol lagoon to their new home in the PCC lagoon this week.

Policy Reminder

PCC's New 24-Hour Policy stipulates any concern or problem brought to the attention of a manager by any employee must be addressed within 24 hours. If not, write directly to the president and he will address both the problem and the manager's (or supervisor's) failure to handle the problem.

Rain Closes PCC

Due to heavy rains and stormy weather, the PCC was closed Thursday, July 22, around noon. Center personnel were informed to return to their homes and their families until further notice.



Upcoming Events

July 31

Tongan Devotional
9 a.m.

August 28

Military Day
"Musica" - Voices of Samoa
Va'a Apa Races
Samoan Feast

Center Closed as Safety Precaution for Guests

Heavy winds and light flooding forced the closure of the Polynesian Cultural Center yesterday with no flood damage to the Center or any Laie homes reported.

A task force representing the Center, BYU-Hawaii and Zions Securities opened an Emergency Command Center at BYU-H yesterday afternoon that remained open

all night to coordinate any weather-related emergencies.

In addition, BYU-H student work crews bagged 500 sand bags yesterday to be distributed to the community as needed.

Meanwhile, the Cultural Center sustained no damage and will open today. About 3,000 guests were affected by the closing and most are expected to re-book their visits to the Center over the next few days. Refunds will be provided to guests unable to rebook visits to the Center.

Center officials decided to close PCC yesterday morning when its lagoon water levels rose 6-10 inches because of continuous rain throughout the night.

"We wanted to remove any possibility of potential injury to our guests. It's the last thing we expected during our peak summer period, but it was the right thing to do," said Reg Schwenke, PCC's Senior Vice President for Public Relations & Advertising.

PCC President Receives Mafi Fakapotu Title



PCC President Les Moore is given official directions.



President Moore and his official spokesperson, BYU-H Vice President Eric Shumway (Faivaola), enter the kava circle.



President Moore drinks his first official cup of kava as Mafi Fakapotu.



Mafi Fakapotu and Faivaola listen intently during kava ceremony.



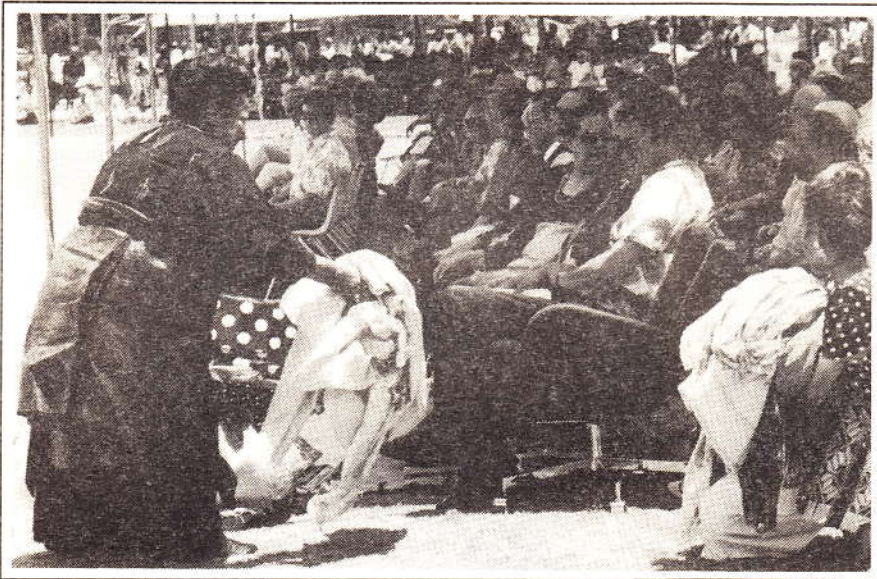
PCC President Les Moore enters the kava circle to receive Mafi Fakapotu title.



King Taufa'ahau Tupou IV relaxes in his Turtle Bay Hilton suite.



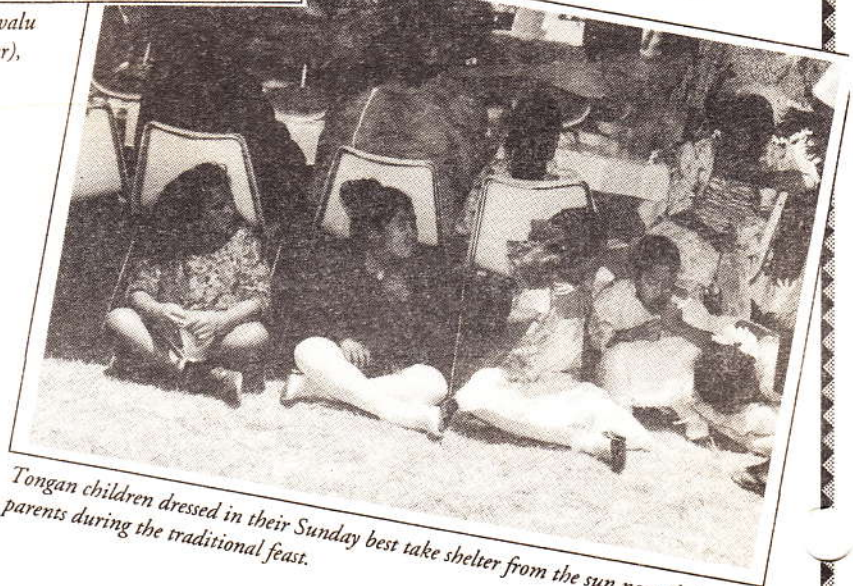
PCC President Les Moore precedes Tongan students bringing in kava plants for the ceremonial kava drink.



Ceremonial gifts of lengths of cloth are presented to Queen Halaevalu Mata'aho during the Kava Ceremony. Mufi Hannemann (center), State Director of DBET, represented Governor John Waihee.



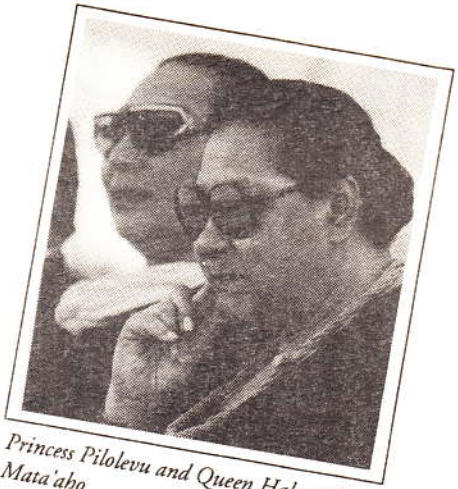
Jeanie Moore



Tongan children dressed in their Sunday best take shelter from the sun near their parents during the traditional feast.



A beautiful Tongan maiden dances the tau'olunga in honor of the King during the kava ceremony.



Princess Pilolevu and Queen Halaevatu Mata'aho.



Princess Pilolevu and her family make their way to their seats for the royal kava ceremony.



BYU-H Vice-President of Academics Eric Shumway speaks on behalf of Mafi Fakapotu.



Matapule Telasila carves up one of nine 600lb pigs for presentations as part of the traditional royal kava ceremony.



Kava plants are officially noted during kava ceremony.

Celebration Activities



A PCC Hawaiian delegation officially welcome the King at the entrance of BYU-Hawaii.



A trio of Maoris make a simple but moving presentation to the King of Tonga.



PCC Board member Kalo Soukop and Sergio Rapu discuss details related to the investiture ceremony.



President Les Moore presents gift of kava bowl to the King, accompanied by PCC Senior Vice Presidents, Reg Schwenke and John Muaina.



Official koa wood bowl carved by PCC master carver David Eskaran presented by the Center to King Taufā'ahau Tupou IV.



Lucy Tawaga presents mats during Fijian gift presentation to the King of Tonga.



Dance instructor Tevita Alamoti Taumoepeau directs the Laie/Kabuku Tongan dance participants.



Uinise Uluave observes the royal visit festivities.



Young Tongan boy helps with Tongan quilt presentation.



Jason Moore participates in his father's investiture by helping with a gift presentation to the King.



Delsa Moe reads letters of congratulations from Governor John Waihee, Mayor Frank Fasi, Sen. Daniel Inouye, Sen. Daniel Akaka, Rep. Patsy Mink, and Rep. Neil Abercrombie. Councilman Steve Holmes read a proclamation from the City Council during the feast celebration.

JOB LISTINGS

AS OF JULY 21, 1993

Contact Human Resources for a complete summary of required qualifications for all positions. For more information call 293-3185.

Date Posted	Position	Weekly Hours	Requirements
7-19-93	Dishwasher	20	F/T BYU Student
7-19-93	Dishwasher	20	F/T BYU Student
7-20-93	Phones Reservationist	20	F/T BYU Student
7-06-93	Japanese Tour Guide	On Call	F/T BYU Student
7-06-93	Japanese Tour Guide	20	F/T BYU Student
7-14-93	Japanese Tour Guide (Temp)	20	F/T BYU Student
7-15-93	Japanese Tour Guide	20	F/T BYU Student
7-16-93	Japanese Tour Guide	20	F/T BYU Student
7-16-93	Japanese Tour Guide	10	F/T BYU Student
4-16-93	CAD Illustrator	40	2 yr degree in drafting/ architecture, knowledge OSHA, 5 yrs work experience
7-19-93	Custodian	20	F/T BYU Student
7-19-93	Fleet Service Attendant	20	F/T BYU Student and Hawaii Drivers License
4-21-93	Male Tahiti Dancer	10	F/T BYU Student
7-13-93	Male Hawaii Dancer	20	F/T BYU Student
7-19-93	Drummer	20	F/T BYU Student
7-19-93	Fiji Demo Guide	20	F/T BYU Student
7-19-93	Mission Home Demo Guide	20	F/T BYU Student
7-19-93	Mission Home Demo Guide	20	F/T BYU Student

POLYNESIAN CULTURAL CENTER MISSION STATEMENT

The Polynesian Cultural Center is a unique treasure created to share with the world the cultures, diversity and spirit of the nations of Polynesia.

In accomplishing this, we will:

- *Preserve and portray the cultures, arts and crafts of Polynesia.*
- *Contribute to the educational development and growth of all people who attend Brigham Young University-Hawaii and the Polynesian Cultural Center.*
- *Demonstrate and radiate a spirit of love and service which will contribute to the betterment, uplifting and blessing of all who visit this special place.*

PCC 30th Anniversary Reunion Wrap-up

The wrap-up of the PCC 30th Anniversary Reunion included a business meeting with PCC President Les Moore who brought the alumni up to date with the financial status of the Center and its future directions.

The Farewell dinner at the BYU-Hawaii Cannon activities ended with promises of future reunions and exchanges of friendship and aloha.

The South Pacific Alumni Show in the Pacific Pavilion highlighted the talents of alumni whose talents still shared traces of past greatness.