



KA LEO O POLENIKIA

Ka Leo O Polenikia
is published by the Public Relations &
Advertising Division of the Polynesian
Cultural Center.

Executive Editor

Reg Schwenke

Editor

Rubina Forester

Design & Printing

BYU-H Press Services

PCC Officer Group

Lester W.B. Moore

T. David Hannemann

John Muaina

Reg Schwenke

Les Steward

Larry Yuen

PCC TO FEATURE TAHITI CULTURAL EVENTS

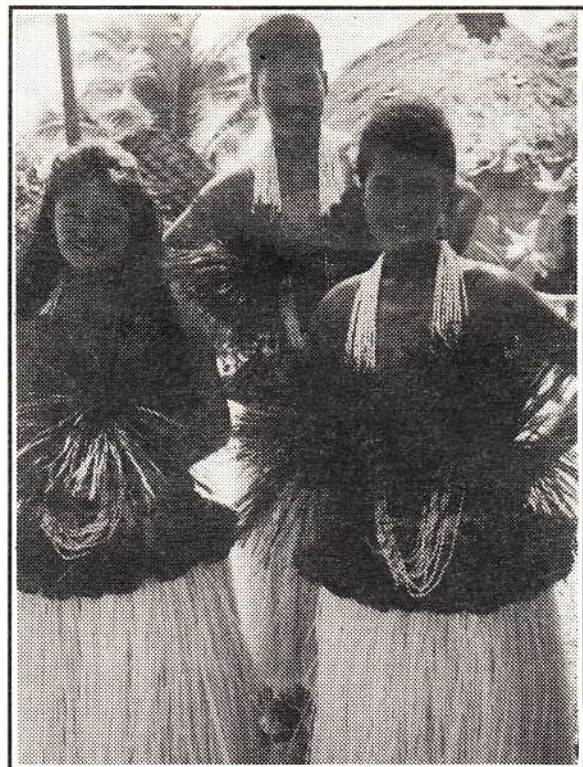
The first place winners of Tahiti's most prestigious annual dance competition, the Heiva, accompanied by some of French Polynesia's finest drummers and musicians, will be featured at the Center in several performances August 31-September 2. Included will be Miss Heiva 1993.

PCC's first international solo Tahitian dance competition will also take place during this time with dancers performing during the night show.

Twenty master crafters will accompany the dancers and will display their creations in the Islands of Tahiti, the Mission Complex and near the Night Show entrance every day

from 3:00 - 7:30 p.m. They will also share their skills and demonstrate techniques of quiltmaking, carving, weaving, sculpture, native costume making and traditional shell jewelry to all interested employees and visitors.

On September 2, at 10:00 p.m., one of Tahiti's finest dancing groups, "O Tahiti e!" will perform. A Tahitian fashion show and talented local performers will open the performance. Ticket prices will be \$5 for adults and \$3 for children ages 5 - 12. Children under five will be free. Part of the proceeds will go toward a Tahitian cultural preservation foundation.



PCC EXCELS IN HOSPITALITY

As Hawaii's top paid-visitor attraction, PCC excels in customer satisfaction. By year's end, PCC will have hosted approximately 900,000 visitors. Paramount among these so far have been more than 77 VIP groups – government delegations, foreign diplomats, LDS Church authorities, business CEO's, political leaders, famous celebrities, and others.

Just this past week, for example, the Center welcomed a descendant of Henry Opukahaia, an important figure in Hawaii's recorded historical past.

The Christian missionary movement in the Hawaiian Islands can be traced to the story of Henry Opukahaia who, as a young man, was taken to New Haven, Connecticut by a Captain Brintnall in 1809.


While there, he converted to Christianity. He and three other

young Hawaiians were enrolled in a school to receive the appropriate training to be sent back to their native land as "preachers and teachers."

Opukahaia died from typhus in 1818 while still a student. His desire to Christianize Hawaii, however, was realized when the Sandwich Islands Mission was organized in 1819. The arrival of the group's first company on the ship Thaddeus in 1820 marked the beginning of great changes in Hawaii.

Opukahaia's direct descendants (particularly Debra Lee) were instrumental in negotiating the recent return of his remains from New England to Kona. Opukahaia was reburied Sunday, August 15, on Hawaiian soil.

The Crowell family of Laie are descendants of Henry Opukahaia. That includes Center employees Bobbi (Promo Team), Stephen (Technical Services) and Lucy (Maintenance).



Letter of Appreciation


We would like to thank Wayne Tarawhiti for renewing our faith in how the visitor to Hawaii can still be treated "royally".

He made a missed bus into one of our best experiences in the islands. He drove us in his own car to the Center and saw to it that we had dinner before the performance. His graciousness and concern for our well-


being was most appreciated. If he's an example of your other employees, the Center is indeed lucky.

Thank you from both my husband and me. The experience was a highlight of our trip.

Elaine Cannon
Huntington Beach, California



With the start of Fall semester at BYU-Hawaii, many PCC departments have held special training sessions for their personnel. Mission Complex manager Sela Feinga reinforces a point of instruction with humor.



DRUMS OF POLYNESIA

Bits and Pieces...

Promo Teams On the Move

Two special Promotion Team trips are scheduled during the next two months:

In September a team will travel to Shanghai, the People's Republic of China, for five days of special appearances.

A second team heads for Germany and Switzerland in October for an eleven-day promotional tour. *Auf weidersehen.*

Special United Airlines Filming

By the way, PCC Director of Sales, Alfred Grace, appeared to have learned German overnight when he was recently interviewed at the Center as part of a special United Airlines film for their forthcoming Germany/Hawaii promotional tour.

Actually, Al was being cued off-cam-



era which answer the interviewer wanted. He doesn't really speak German...yet.

The film will be shown at travel agent seminars in Germany to approximately 2,500 top-producing agents.

The State of Hawaii, major hotels and PCC all support the United Airlines promotional tour which coincides with Hawaii Governor John Waihee's "Aloha on Tour" program that encourages European visitors to come to Hawaii.

The Center's Promo Team will perform and will be prominently featured in German media.

Welcome Joe Moore

We extend a warm aloha to Joe Moore – not the local TV personality but PCC President Les Moore's brother and his family. Hawaii is a new experience for all of them.

Foodland Fever

The biggest happening this summer since the King of Tonga visit in July was the grand opening of the Foodland store in Laie this past weekend. By the evidence of fresh donut boxes on Center workers' desks and work stations, they are in "full" support of our town's newest attraction.

Summer of '93

From June to August there were 17 double show nights. That means over 52,840 visitors enjoyed "Mana, the Spirit of Our People" during this three-month period.

Hawaiian Proverb

Aia ke ola i ka hana.
Life is in labor.
Labor produces what is needed.



PCC's Museum Stores offers Employee Discounts

Special prices on selected items are now available for employees at PCC's Museum Stores Office located in the Old Administration building (between First Aid and MIS).

The four PCC video tapes – Mana, Welcome to Polynesia, Polynesian Odyssey and Portrait of Polynesia – cost only \$5.00 each with a limit of five per year.

Audio tapes of the night show, PCC souvenir books (available also in Japanese), PCC Brass Band's compact disc, Easter Island moai statues, night show posters and PCC calendars are 50% off retail prices.



JOB LISTINGS

AS OF AUGUST 24, 1993



Contact Human Resources for a complete summary of required qualifications for all positions. For more information call 293-3185.

Date Posted	Position	Weekly Hours	Requirements
8-17-93	Pantryworker (Luau)	20	F/T BYU Student, able to lift 35 lbs
8-18-93	Dishwasher	20	Able to lift up to 70 lbs
8-18-93	Baker	20	F/T BYU Student, able to lift 35 lbs
8-13-93	Cook 1	20	F/T BYU Student, able to lift 70 lbs
8-13-93	Cook 1	20	F/T BYU Student, able to lift 70 lbs
8-18-93	Human Resource Clerk	20	F/T BYU Student
8-12-93	Japanese Tour Guide	20	F/T BYU Student, fluent Japanese
8-17-93	Multi-purpose Guide	20	F/T BYU Student, ASL certified
8-23-93	Laie Tour Guide	20	F/T BYU Student
4-16-93	CAD Drafter/designer	40	2 yr degree in drafting & arch.
8-6-93	Groundskeeper (temp.)	20	F/T BYU Student
8-10-93	Custodian	20	F/T BYU Student
8-18-93	Custodian	20	F/T BYU Student
8-18-93	Custodian	20	F/T BYU Student
8-19-93	Custodian	20	F/T BYU Student
8-19-93	Warehouse Worker	20	F/T BYU Student
8-4-93	Sales Associate	20	F/T BYU Student
8-23-93	Inventory Control Clerk	20	F/T BYU Student
7-28-93	Male Fiji Dancer (Lead)	20	F/T BYU Student
7-28-93	Female Fiji Dancer	10	F/T BYU Student
7-28-93	Female Fiji Dancer (2)	20	F/T BYU Student
8-19-93	Female Maori Dancer	20	F/T BYU Student
8-17-93	Male Maori Dancer (2)	20	F/T BYU Student
6-23-93	Male Tahiti Dancer	10	F/T BYU Student
8-01-93	Male Tahiti Dancer	20	F/T BYU Student
8-06-93	Male Tonga Dancer	20	F/T BYU Student

POLYNESIAN CULTURAL CENTER
MISSION STATEMENT

The Polynesian Cultural Center is a unique treasure created to share with the world the cultures, diversity and spirit of the nations of Polynesia.

In accomplishing this, we will:

- *Preserve and portray the cultures, arts and crafts of Polynesia.*
- *Contribute to the educational development and growth of all people who attend Brigham Young University-Hawaii and the Polynesian Cultural Center.*
- *Demonstrate and radiate a spirit of love and service which will contribute to the betterment, uplifting and blessing of all who visit this special place.*

HONESTY APPRECIATED

The Lost and Found department extends its appreciation to Center employees for their continuing honesty.

In the past year approximately 500 items were turned in including small necklaces, rings, cameras, video cameras and strollers.

An item not claimed by its owner after a 30-60 day waiting period is turned over to the finder.