



EMPLOYEE UPDATE

Polynesian Cultural Center ☐ December 14, 1979

PCC shops offer holiday discount

To celebrate the holiday season, Shop Polynesia and Hale Kuai are offering all PCC employees with a permanent identification card special discounts through December 31.

Upon showing your I.D. card, you'll receive 20% off the price of cameras, film and perfumes, and 40% off on all other items in both stores. The discount is in effect Monday through Friday from 10 a.m. to 4:30 p.m.

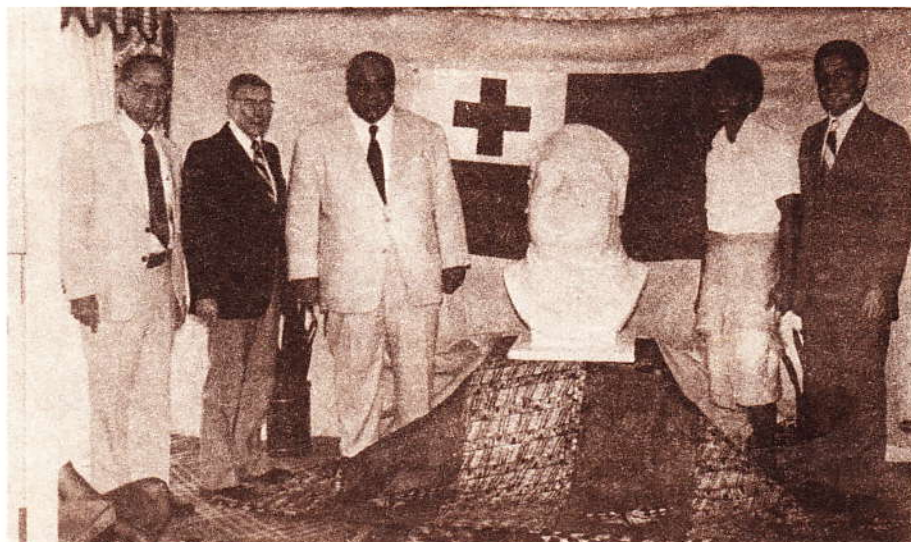
Remember -- no card, no discount, so please be sure you carry it with you if you plan to do your Christmas shopping at PCC this year.

Terrific Tongan Cultural Day!



Terrific describes our Tongan Cultural Day celebration last Saturday to a "T." Despite an intense afternoon heat, Chief Tevita Taumoepeau and his hard-working villagers treated visitors to quite a show. See pages 2 and 3 for a complete pictorial wrap-up.

A gift fit for a king



From left to right are BYU--H's Eric Shumway from the Communication and Language Arts Division, and President Dan Andersen, King Taufa'ahau Tupou IV, Viliami Toluta'u and PCC's General Manager Bill Cravens.

A four-foot-high 120 pound bust of Taufa'ahau Tupou IV, king of Tonga, was formally presented to the monarch Sunday, December 9, as a gift from the Tongan students at BYU--H. The presentation was made in the king's suite at the Ala Moana Hotel, where he and his entourage stayed during their brief visit to Hawaii.

The king and other Tongan dignitaries stopped over on Oahu on their way from West Germany to the royal family's private retreat in New Zealand. The king had been in West Germany to acquire freight and passenger ships for Tonga as well as to renew Tonga's treaty of friendship with West Germany which had been signed in the early 1900s by his predecessor.

Turn to page 2

A tantalizing taste of Ton



Lovely tapa and fine mats such as this one, gifts from Tonga's royal family to the Center, were formally presented during the Cultural Day celebration.



Visitors also had the chance to view a

A kingly sculpture

From page 1

Among those attending the presentation ceremonies at the Ala Moana Hotel were BYU--H art major Viliami Toluta'u, who sculpted the bust, PCC's General Manager Bill Cravens and President Dan Andersen of BYU--H.

Toluta'u, who comes from Tonga, took two months to complete the project -- putting in more than 40 hours of work per week on it.

The idea for the sculpture, however, dates back more than three years ago. In 1976, when Taufa'ahau Tupou IV was in Hawaii to receive an honorary degree in humanities from BYU--Hawaii, Toluta'u presented him with a relief sculpture of Captain Cook's landing in Tonga. Toluta'u was able to meet and talk with the monarch, and it was then that he decided to do another sculpture for the king -- this time a lifelike bust.

The sculpture will be shipped to Tonga later this month to coincide with the king's return to his homeland from New Zealand.



The 120-pound bust of the Tongan king is carefully placed on fine mats and tapa cloth for the presentation.



King Taufa'ahau Tupou IV greets Dan Andersen (left) and Bill Cravens following the presentation.



Our Tongans
"Tau'olunga."

gan talent...

Photos by Sharon Montgomery



traditional Tongan kava ceremony.



The men of the village really got into the festive mood with their spirited dancing.

Malo e Lelei!



sters showed off their grace when they performed the



Winning the "Pageant of the Long Canoes" was the Samoan village, joined here by several PCC friends.



Placing second in the canoe pageant contest was this proud group from Tahiti and a few chiefly well-wishers at the far right.



Hula Bowl orientation meetings today

Volunteers who have been selected to participate in the Hula Bowl Halftime Show on Saturday, January 5, must attend either of two orientation meetings scheduled today. The first will be at 5 p.m. in the BYU--H Ballroom; the second will be at 9 p.m. in the school's auditorium.

These meetings will kick off a series of planning sessions and dance rehearsals which will culminate with the colorful 12:30 p.m. show on the 5th. The Halftime program will be viewed by

thousands of local residents as well as a nationwide television audience.

PCC's segment of the presentation will feature singers, musicians and dancers from all of our island groups, and the float units we used in September's Aloha Week Parade.

Even those who won't be performing on the field that Saturday will have a chance to participate. Volunteers will be needed to decorate the floats the night before the game. Details on this work-

shop will appear in future issues of the Update.

Performing at the Hula Bowl -- one of the most prestigious collegiate games in the country -- is a great honor and opportunity for PCC and BYU--H. Let's make our first representation at such an event an outstanding effort! Remember, we not only represent the Center and BYU--H, but also the Church, our island homelands and the state of Hawaii -- at the Aloha Stadium and on national television.

Kuilima green fees to be raised

Attention all PCC golfers! The Kuilima Hotel has announced that its green fees will be going up in 1980. Beginning on January 1, green fees will be \$19 per person for two people playing 18 holes.

After 2 p.m., playing nine holes will cost \$7 per person if two people play.

Next year, the hotel will be introducing the Kuilima Golf Gold Card, which will entitle the holder to unlimited play. Here's how it works:

You may purchase the card quarterly for \$225. Your card will then be good for three-month periods -- January 1 to March 31, April 1 to June

30, July 1 to September 30 and October 1 to December 31.

Or you may opt to buy the card for six months at a time for \$425. This card is valid for six-month periods -- January 1 to June 30 and July 1 to December 31.

Gold Cards also may be bought for the entire year at a cost of \$800. These cards are good for unlimited play from January through December.

And, while we're on a golf note, congratulations to Mani Tuia, head of our Security Department, who recently scored his sixth hole-in-one! Mani landed his ace at the Kuilima golf course on the 11th par 3 hole using a 5 iron.

BYU--H Calendar

Friday, December 14

● Know Your Religion, 7:30 p.m., Kaneohe Stake Center. Speaker Truman Madsen will discuss "The Sacramental Life of Christ." Admission charge is \$2 for adults and \$1 for students who don't have season passes.

Saturday, December 15

- Movie, "The Wiz" starring Diana Ross, 2, 6:30 and 9:30 p.m., auditorium. Admission charge.
- Women's basketball team plays Centralia, 5 p.m., gym.
- Men's basketball team meets University of Virginia, 7:30 p.m., gym.
- Christmas dance, 8 p.m., ballroom, Admission charge.

Tuesday, December 18

● Concert by Cecilio and Kaponu, 7 and 9:30 p.m., auditorium. Tickets, at \$4, available at Aloha Center.

Wednesday, December 19

- Women's basketball team battles Centralia, 5 p.m., gym.
- Men's basketball team faces Northern Montana, 7:30 p.m., gym.

Thursday, December 20

● Men's basketball team plays Northern Montana, 7:30 p.m., gym.

1980 Lei Alii passes available

Need a fresh Christmas gift idea? Why not get your friends and relatives 1980 Lei Alii Seasonal Passes to PCC. The non-transferable pass, good through December 1980, entitles the holder to unlimited free admission to the Center and our two daytime shows, 20% discount on the dinner buffet and 20% discount on the evening show. Cost is \$12 for adults and \$6 for children aged five through 11.

Brand new in 1980 will be a Lei Alii Family Pass offered exclusively to PCC and BYU--H employees. For \$24, the card entitles the holder and his/her spouse, children and parents (if living in the same household) to unlimited free

admission to the Center and two daytime shows, 20% discount on the lunch and dinner buffets and 50% discount on the evening show.

Lei Alii Seasonal Pass application forms are now available at the Reservations Office. Family Passes are available at BYU--H's Public Affairs office and through President Cravens' secretary, Josephine Moeai.

Our Lei Alii pass was introduced last year as a way of returning something to our friends who frequently visit the Center. The new Family Pass is a special privilege for you, our important employees. By using it, you will be able to enjoy and share our PCC cultures as often as you like as a family activity.