



Polynesian Cultural Center

# UPDATE '91

Employee Newsletter

Friday, October 11, 1991

## D.O.E. State Teacher of the Year Chosen!



*State Teacher of the Year ...Linda Coleon, an English teacher at Baldwin High (Maui), with her family, Center VP Peter Ka'anapu, and the Encyclopedia Britannica Representative.*

The conch shell blows, and a band of colorfully costumed natives begins to enter the room. There is low chanting as the villagers approach the slightly nervous teacher...and then...they present her with a money lei and a koa bowl. This was the situation when the Marquesas Village workers, accompanied by Center VP Peter Ka'anapu, were pleased to present Linda E. Coleon with a Haku Lei and a Lei made from money at the Board of Education meeting on Thursday, October 3, 1991.

It was all part of the PCC/D.O.E. State Teacher of the Year program. As part of her prize, Coleon received \$3,000 from the Center and a complete set of books from Encyclopedia Britannica.

*Mahalo to the Marquesas Village & Special Projects for helping present the Teacher of the Year Award!*



She will now be Hawaii's representative to the National Teacher of the Year next April.

In a released statement, the Department of Education describes Coleon as "...a true model of a professional teacher through her dedication, commitment and empathy in developing the 'whole' child and the 'whole' teacher."

Coleon is a Baldwin High School English teacher. She has been a teacher for 17 years, 11 of them at Baldwin. She currently serves as department head, and assists in staff development programs.

## Happy 28th Birthday PCC



# Down Memory Lane

*Twenty eight years ago it all began here at the Center. Many great and exciting things have happened and the Center is rich in its history. Through the next few pages you will be able to see the beginnings of the Center, as well as other important events and people who have been along for the ride.*



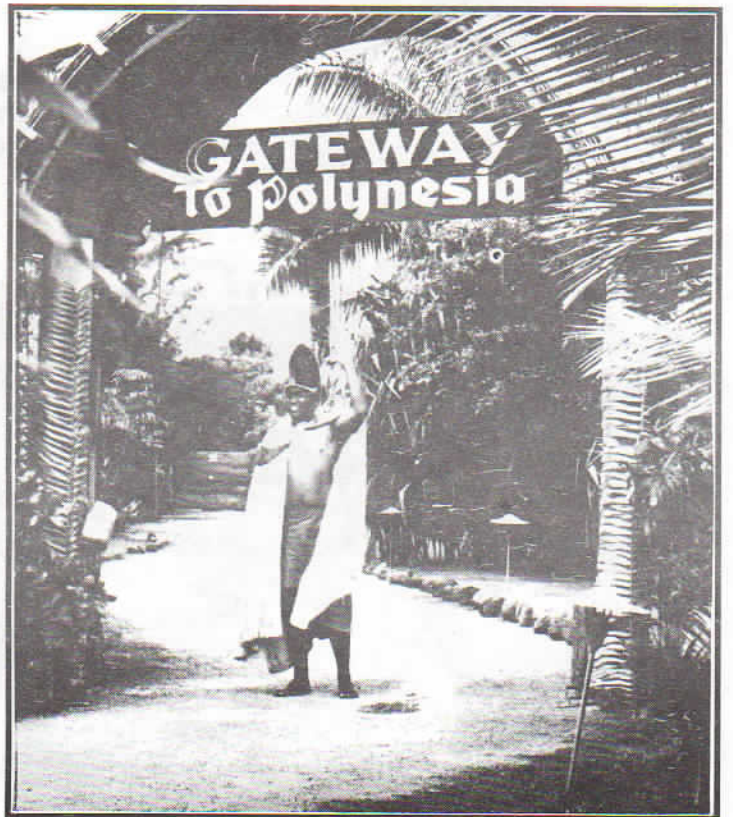
*1963 - Construction of the Center is well underway by labor missionaries.*



*October 12, 1963 - Elder Hugh B. Brown takes part in the dedication of the Center. At his left is Lineni Makihele and at his right is Tiva Ieri.*

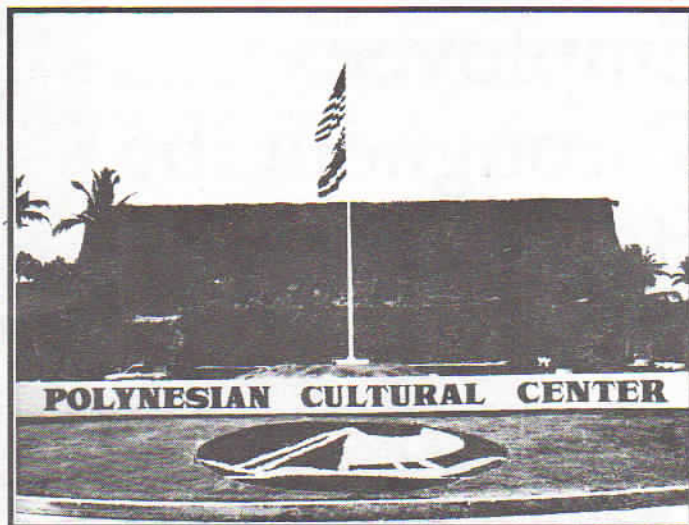


*1963 - Most construction is now complete and Center is open for business, Notice the difference that just a few months can make.*





*1963 -1965- This is the front entrance as it first appeared to Center guests.*



*September 1991- The front entrance as it appears today. Guests are welcomed with colorful signage and attractive ground sculptures.*



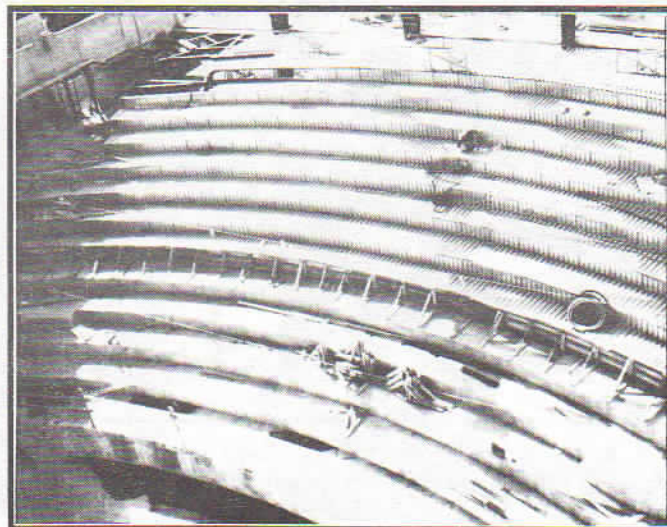
*Gateway- Before it was a restaurant the Gateway was an orientation building.*



*1976 -The three most notable additions in this picture are the Gateway Restaurant, the Pacific Pavilion and the new Front Entrance/Reservations area.*

**1991-**  
*The newest addition to the Center is the Hawaiiimax Theater. The largest format movie theater in Hawaii.*

*Who knows what the future will hold?*



# Employees Throughout the Years...



*Front: Rima Sika & Sisi Pututau  
Back: Ofa Talakai & Sam Langi in an early  
performance in the Tongan Village.*



*L to R - Tomasi Tawake, Holomia Chase, Ofisi Pututau,  
Vatau Galeai, Don Burk, Noelani Kauhane, Vida, Erena  
Mapuhi, Nicholas Levy, Mele F. Fonua, Joe Apiti,  
Juliana Turagabeci.*



*Front: Aunty Christina Nauahi, Mom Eugenia Logan,  
Pita Vamanrov, Erena Mapuhi  
Back: Tony Haiku, Tuione Pulotu, Sam Langi.*



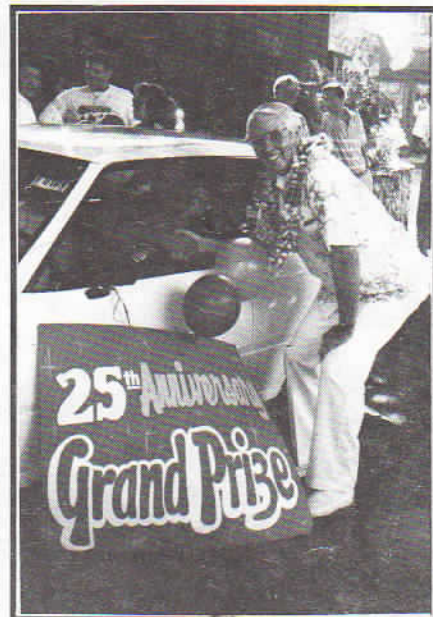
*L to R - Kauai Betham, Aunty Lily Kama,  
Margro Howlette, and Pualoke Dela Cerna.*



*"Uncle" Barney Christy  
& Norm Mcgrevey  
hard at work on another  
carving for the Maori  
Village.*



1984- The tradition begins. Today the Employee Easter Egg Hunt takes place in the Farm area, but for the very first Hunt the Villages provided the setting. This event is looked forward to by Parents and children alike!



1988: Congratulated by President James Christensen, Reid Kamauoha wins the Grand Prize at the 25th Anniversary!



Above & Below: Santa has become somewhat of a tradition here also. Pictured above is Santa Ralph (Rodgers) and below is Santa Jim (Christensen). These good Santas were known to roam the paths of the Center tossing candies & fruits to all good employees.



1988: The 25th Anniversary also brought us an "Alumni Night Show". Pictured above and below are scenes from the Samoan section of that performance.



# Many Important Visitors...

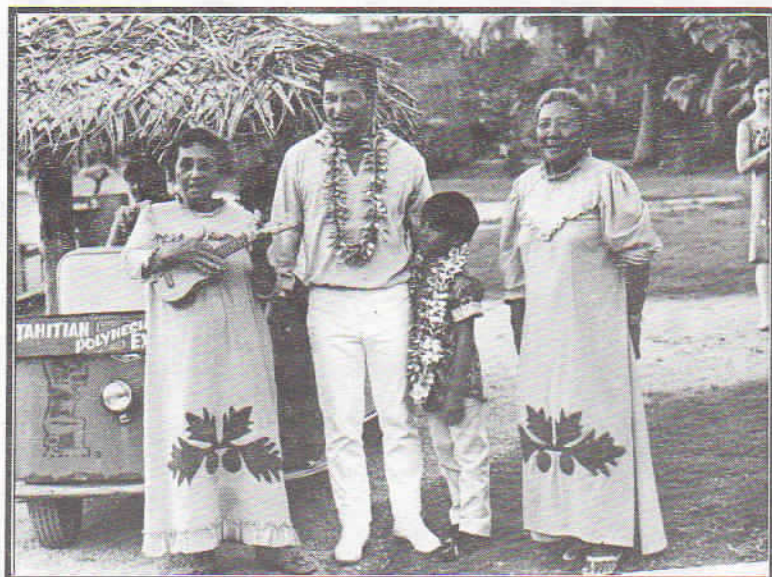


*In an early visit to the Center, N. Eldon Tanner, and President Spencer W. Kimball. At the time both were members of the Quorum of Twelve Apostles.*



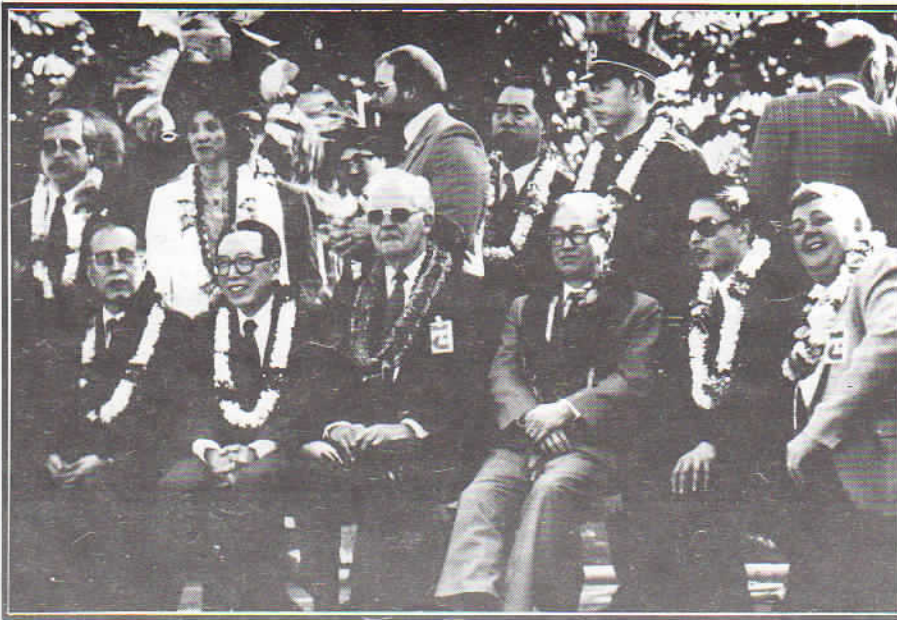
*1973: President Howard W. Hunter, accompanied by his wife celebrate the 10th Anniversary with employees.*

*1988 Below- Hawaiian Born Saliva'a Atisanoe, known in Japan as Konishiki has attained the rank of OZEKI, just one rank away from champion. He is shown here with his Fiancee and Center VP David Hannemann.*



*Famous Island entertainer Don Ho shown here with Hawaiian Village demonstrators Ma Logan and Hattie Au.*





1984 - World leader, Chinese Premier Zhao Zyang visits the Center with President Ralph Rodgers and Chairman of the Board of Directors, Marvin J. Ashton.



1985 - Chinese President Li Zianni stops to visit the Center on his way to Washington D.C.



1989 - The cast of the popular TV show "Full House" shot an episode at the Center.



1989 - HRH Princess Piloievu Tuita & Capt. Maulufekotofa Tuita with their daughters Tetelupe, Frederica and Lupealu.



1989 - "The Fat Boys" visit the Center.

1991 - Hawaii Lt. Governor Ben Cayetano & Elder Thomas S. Monson officially open the Hawaiimax Theater.



# Festival Polynisia Mahalo!

President Shumway and the management team received quite a surprise when Festival Polynisia Co-chair Aggie Wolfe and Ati So'o came to their meeting on Monday, September 30th to present the Center with a special award thanking us for our support of the Festival.

The Festival Polynisia took place at Kapiolani Park over the previous weekend. The Center provided the Festival with many of the small huts that made up a polynesian village. Center workers also participated in manning the villages similar to our villages.



We would like to thank those Center workers who helped make the Festival a success. We know that many of the people who visited the Festival Polynisia at Kapiolani park also came to the Center because of what they saw at the Festival. Thank you for the way you represented the Center.

## "Spreadsheets"

by Lei Cummings

### Adjust 1-2-3 or Symphony Ranges Precisely

When you're entering range-oriented functions such as @SUM () or executing commands such as /Range Format or F10 Range Format, you may sometimes highlight the wrong range. Here's a handy trick that enables you to change the shape of the range without pressing <ESC> and starting over. Press the period key one or more times to move the cursor to the corner you want to adjust, then use the cursor keys to adjust the range. This gives you fine control over the range, allowing you to increase or decrease it in any direction. (Note: If your range consists of only one column or one row, you'll have to press the period key twice to move the cursor around.) *(PC World, October 1991)*

### MS-Excel Worksheet Opening Shortcut

If you open the same group of worksheets repeatedly, Microsoft Excel provides a shortcut for you.

Each time you quit a Microsoft Excel session, Microsoft Excel saves a document named Resume Excel in the System Folder. Resume Excel contains information about what documents were open and what the arrangement of windows was when you last quit. If you double-click the Resume Excel icon rather than the program icon to start Microsoft Excel, all of the documents that were open when you quit will be opened.

You can rename or move Resume Excel if you want to save it. If you do not rename or move it, Microsoft Excel writes over Resume Excel the next time you quit.

(Microsoft Excel Sampler)

## DMBA Update!

### Surviving Spouse Benefit

Effective immediately, there is a modification to the section of the Master Retirement Plan dealing with amounts payable to surviving spouse.

In the past, a surviving spouse has been eligible for benefits immediately following the death of a vested participant.

In the future, a surviving spouse will not be eligible for a Master Retirement Plan Benefit until the date the deceased vested employee would have turned age 55. This change is made necessary under regulations issued by the Department of Labor.

If you have any questions regarding this modification contact Maka Obina #3191 or DMBA.