



October 23, 1981

update 81

Polynesian Cultural Center

CENTER NEWS

Fiji Day Low Key, High Class

The recent Fiji Cultural Day Celebration proved that it is possible to present a low key program in a high class way, as Chief Sigavata and his people entertained guests in traditional fashion.

The May Day area was prepared well, with a viewing stand erected for invited guests that afforded them shade from the hot afternoon sun without cramping the stage area, and the large grassy stage gave plenty of room for the crowd to view the presentation comfortably.

The Canoe Pageant that day was beautiful because of the extra effort at decorating the canoes with ferns and flowers, and the Fijian Village presented an on-going program of displays that was a bonus to guests.

In all, it was a day of gracious tradition presented with dignity and courtesy by the people of the Fijian Village. Our thanks go to Chief Sigavata, Sister Peters and all the other students and employees who have set a standard for future cultural days.



More photos on page 3

Cultural Center Joins United Nations

Center personnel from the Cultural Education Department will represent their countries at the United Nations Day celebration tomorrow to be held in the grounds of the Honolulu Zoo.

1981 is United Nations International Year of Disabled Persons, and the Center joins with Radio KIKI Al Harrington, Daniel Deardorf, The Kasuals, the Governor's Office, and

other locals to present "One Day in the World", a program of live entertainment to the expected 10,000 who will attend.

At 12 noon, a parade of people dressed in their national costumes and representing countries from around the world will be presented on stage. PCC employees from Samoa, Tonga, Fiji, New Zealand, and Tahiti will participate in the benefit which

will aid Hawaii's deaf, blind, and otherwise disabled.

The day is a free one, with book sales and other activities planned, so if you would like to enjoy a special day and lend your support to the special people of our community, "hele on down" to the zoo grounds anytime between 9.00am and 4.00 pm tomorrow.

INTRODUCING.....

the
Lanai
(formerly the Makaala Snack Bar)

Friday, October 23rd

11:00 a.m. - 2:00p.m.

Snack Shop Special

Chicken Sandwich
French Fries
Sprite
\$1.75

Happy Birthday

Fuatino Stevenson	Oct.	23
Bonnie Keawe		23
John Olszowka		23
Fulisia Magalei		25
Berdeen Keawe		25
Cecilia Augkawidjaja		25
Harvey Alisa		25
Poura Meriteragi		25
Edward Soven		26
Vernon Kalauikau		26
Sione Manoa		26
Maria Fonoimoana		27
Nancy Bordonada		27
K. Fatu Sauaga		27
Bob Tahauri		27
Levani Damuni		29
Violet Hawkins		29
Bode Uale		29
Sione Ika		29
Thomas Monson		29
Keiko Otani		29

PLEASE NOTE: Update staff would like to join with the Center personnel in wishing Happy Birthdays to all of these employees. Our informant is the central computer located in the personnel office. If your birthday is incorrect in our weekly lists, -- or if we forget you altogether, please correct the information with the personnel office. Otherwise we will have to institute a Very Merry Unbirthday list!

Direct Deposit

How would you like to save yourself some time? How would you like to beat the crowds every other Friday at the bank?

You can NOW! For those of you who are interested in direct deposit we have it available at your Personnel Office.

Your direct deposit can go to the following banks.

- Bank of Hawaii
- Honolulu Federal Savings & Loan
- Hawaii First National Bank
- State Savings
- Oahu Educational Credit Union (Non-Bank)
- Hawaii Central Credit Union (Non-Bank)

All interested employees, State Savings is offering FREE checking with NO MINIMUM BALANCE and a Christmas Savings Fund for Christmas 1982. Inquire at Personnel if you are interested.

Pre-Christmas Sale

Get your Christmas presents now! Shop Polynesia is having a special pre-Christmas discount sale for all employees. Sale starts immediately and will extend through Christmas.

Please be aware that the 40% discount is a privilege extended to PCC employees only. It is not to be extended to friends, tourists, and non PCC employees. Only your immediate family (your children, your spouse, and your parents) may use the discount and then ONLY when accompanied by you. No exceptions.

"FEELS GOOD TO GIVE"



Hawaii, the Aloha United Way is our way to give. Last year alone, more than 170,000 of us on Oahu contributed to the 59 member agencies. We gave to help pay the rents, to buy the electricity, to face inflation, uncertain government funding, and manpower cutbacks. We enabled the research and supported the programs. We've never failed to respond to the overwhelming needs of our community.



This pledge card in our hands means the work can go on in 1982. Not one life on this island need go untouched by a professional or volunteer of the Aloha United Way. So please, sign the card and give, again.

Through the Aloha United Way, more of every dollar we give goes to our community than any other way. The Aloha United Way is the most effective way to give.

The "AlohaLine" is one way the Aloha United Way gives back: 521-4566

Problems don't punch a timeclock. Or say good-night. Or take vacations. Through the Aloha United Way, AlohaLine volunteers are always ready to listen, give out information, help you with referrals, even tell you how to volunteer, 24 hours a day. So call. And remember, the giving never stops at the Aloha United Way.

The Aloha United Way Rally will be held Wednesday, October 28th from 10:30 - 11:30 a.m. in the BYU Aloha Center. All PCC employees are invited.

Employee Notice

Discounts available for all PCC employees at Disneyland, Disney World, Sea World, Knott'sberry Farm Universal Studios and Hertz Rent-a-car. For more information contact the Personnel Department.

DMBA DEADLINE

Those interested in signing up for the new DMBA Option B insurance program please sign with the Personnel Department by Thursday, October 27th.

BULA VINAKA!!

Continued from page 1

Activities were varied and colorful for Fiji's special day, and drew an appreciative crowd of locals and guests.



Photos by Vernice & Dana Pere

Final Awards Announced

The final results of last weeks anniversary activities were tabulated from the official written results received by the scorers for each event and are as follows:

Games

\$100.00	1st	Maintenance
75.00	2nd	Theater
50.00	3rd	Food Service
25.00	4th	Village Operations
Bag of Rice	5th	Cultural Orient. & Education
Bag of Rice	6th	Tech. Services & Wardrobe
2 Cases of Soda	7th	Reservations
2 Cases of Soda	8th	Admin. & Business Office
1 Case Soda	9th	Operations
1 Case Soda	10th	Shop Polynesia

Displays

\$50.00	1st	'Banana' - Corp. Admin.; Bus. Off. & Maintenance
\$40.00	2nd	'Breadfruit' - Cult. Orient.; Education & Wardrobe
\$30.00	3rd	'Papaya' - Tech. Services; Wardrobe & Shop Polynesia
\$20.00	4th	'Coconut' - Village Operations & Reservations
\$10.00	5th	'Pineapple' - Food Service & Operations

CONGRATULATIONS TO ALL!!



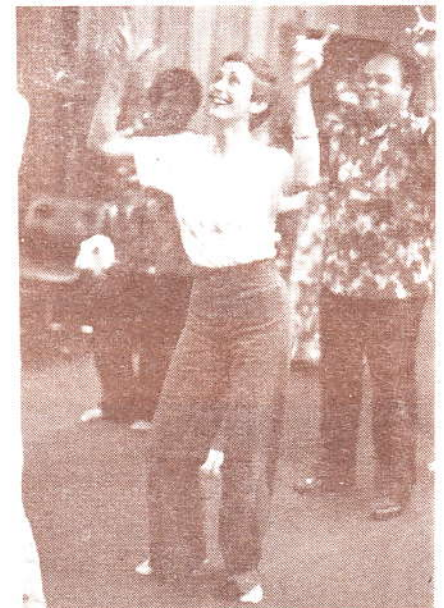
This is touch, not tackle fellas!



The Three Musketeers or the Three Stooges?



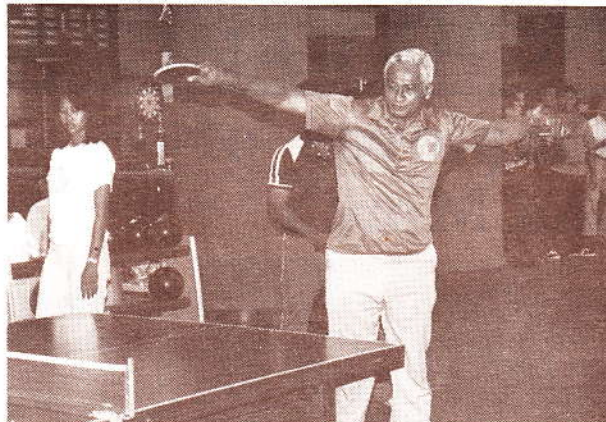
Maintenance mania



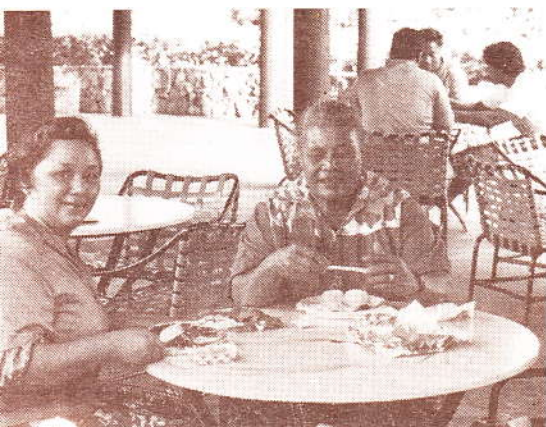
So, That's what they do in the Administration Building!

Good Times

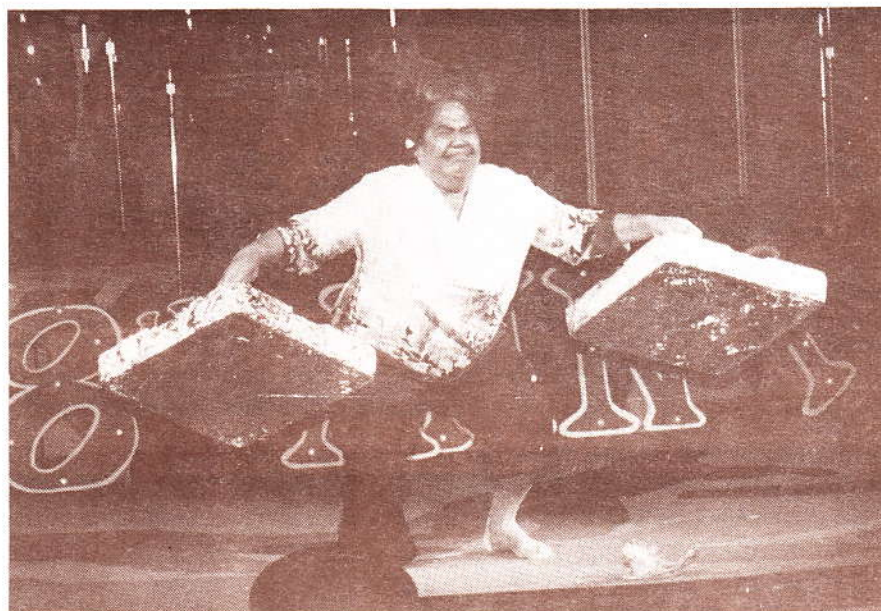
Ping pong? Why else do you think I came to Hawaii?



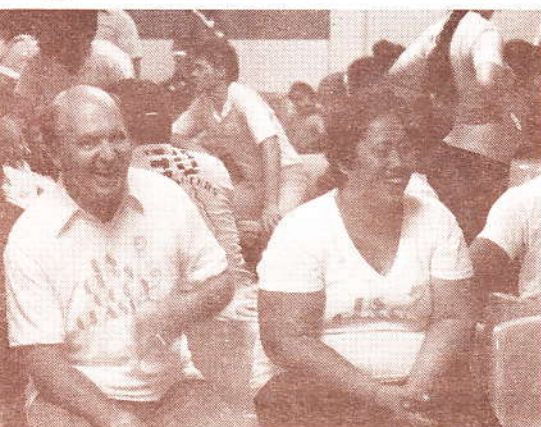
Aren't you glad I use Dial?



Is this fork edible?



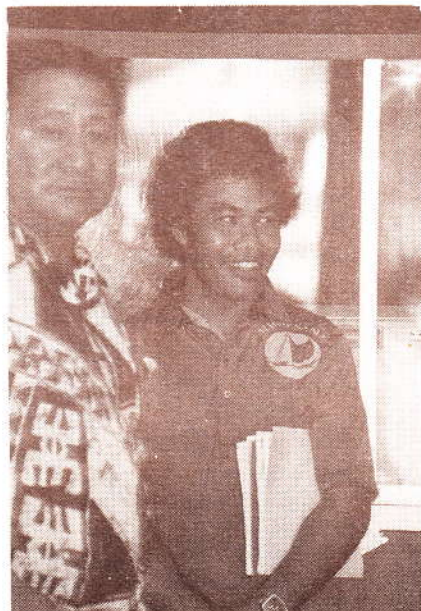
Wonder Woman ala Polynesia!!!



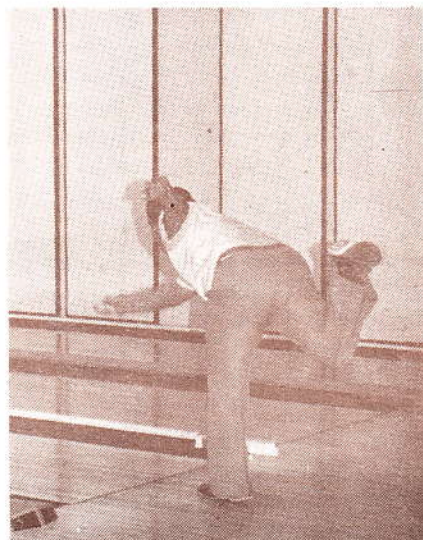
How my computer bowling program would work.



When I count to three . . .



With this Maintenance T-shirt disguise no one will ever suspect I am really with the Village Operations Team, Ha! Ha!



Uh! Oh! I thought I heard something rip!

Photos by Vernice Pere & Loni Manning

NEWS

Employee of the Month



Photo by Loni Manning

Lata Fale

Lata Fale has been chosen as Employee of the Month from the Cultural Orientation Department for the month of September. According to Lata's supervisor, "She is a very solid employee that fulfills her responsibilities well. She always has a good attitude and is fun to work with." According to her work evaluation, Lata scored high in all areas and is known to be dependable, loyal and to have a strong character.

Lata is a second year Business Education student from Tonga. After graduation she plans to return to Tonga to teach.

As are all Laie Tour Guides, Lata is a returned missionary and served her mission in Tonga from 1977-1979.

During tours Lata has the opportunity to talk to many about the gospel and to give them copies of the Book of Mormon. Some have continued to correspond with her and express interest in taking discussions or purchasing additional copies of the book.

Lata says about her job, "I enjoy my job because I love to share the gospel and bear my testimony. I never get tired of that."

Page 6

Aloha! To the Big Apple

A group of Center entertainers are off to New York City soon for an hour-long performance at Avery Fisher Hall in Lincoln Center on November 9 to help launch the 1982 "Hawaii: Isles of Smiles" promotional.

The Center program will consist of dances from Hawaii, Fiji, New Zealand, Tonga, Samoa, and Tahiti, as well as an ukulele duet, the Hawaiian Wedding Song, "Stars over Laie", "I am a Child of God", and the "Aloha" finale. In addition, the Samoan Fire Knife Dance will also be a featured part of the program.

The Center troupe includes: Cy Bridges, Keith Awai, Albert Peters, Harry Brown, Kalili Hunt, Tehina Mariterangi, Haunani Kaanaana, Delsa Atoa, Lucie Fonoimoana, Dot Marasco, Stacy Ferris, Jaime Asera, Jillian Wardle, Patricia Hutihuti, Siliga Tuua, Mele Laumatia, April Kaina, Serina Johnson, Cassie Wilhelm, Vern Kiaha, John Cornelius Vernon Kalanikau, Fasi Tovo, Atoni Petero, Kim Jessen, Edward Maiava, Ikaika Dela Cerna, Moloni Iongi, William Ernestburg, Felesi Felesi.

We wish them well as they take the Center Aloha to New York City.

The Visitors Write Letters

October 5, 1981

Mr. William H. Cravens
The Polynesian Cultural Center
55-370 Kamehameha Highway
Laie, Hawaii 96762

Dear Mr. Cravens:

Dr. Mark Cannon entertained me in Hawaii by visiting your Center. I cannot tell you how impressed I was with the attitude and spirit of the students that I met at the Center. Someone in your organization is doing something that helps these youngsters to grow up with a good outlook for the future and a lot of common sense in dealing with problems. This is something I do not find too often in my travels.

Keep up the good work you are doing and the philosophy that you are teaching may start to spread around the world and become infectious.

Enclosed is a check that you may be able to put to good use at your institution.

Sincerely,

F.A. Lennon

FAL:al
enc.
cc:Dr. Mark Cannon

Dignitaries Interested in Music, Machines



Guide Stanley Yau with composer Chen, his wife, and BYU-HC Chinese student.



Japanese guide Jose Uemura with hotel executives.

This week the Center hosted two parties of Asian dignitaries. Chen Gang, a composer from the People's Republic of China and his wife visited the Center Wednesday following Chen's lecture and video tape presentation at the University.

Chen is best known for writing the "Butterfly Lover," and is a member of

the Shanghai Music Conservatory.

Our other distinguished guests included Mr. Yanagida and Mr. Tarashima, hotel executives from Kagoshima, Kyushu Japan. They are building a resort in Baja, California, and were interested in the Center's use of electric carts and how it might apply to their resort needs.

☆ Volleyball ☆

WANTED:

Spikers,

Slammers

& Servers

It's Volleyball season again. So all you spikers, slammers and servers sign up now for the PCC team to compete in the Travel Industry Volleyball League.

Games begin November 10th and end January 30th and will be held Tuesday, Thursday and Saturday evenings.

PCC will have two teams, a men's team and a women's team on the open roster system. If you would like to have your name on the roster contact volleyball coordinator Keith Awai at ext. 3095.

Introducing: Elder Mark E. Peterson



As a new feature, UPDATE begins a column introducing the General Authorities of the Church to its readers. Each week we will feature one of these leaders, and begin this week with Elder Mark. E. Peterson.

One of the senior members of the Council of the Twelve, Elder Peterson was named to the Council in April 1944. Well known throughout the Church as a speaker and writer, he worked for many years with the Church's public relations program and served as chairman of the Church Information Committee.

Elder Peterson helped organize the visitors centers throughout the Church at historic and temple sites. He is a former newspaper reporter and editor and has contributed greatly to Church literature with published editorials and books.

His sermons and counseling on the issues of the day are always forthright exhortations to adherence to gospel principles and righteous living.

EDITORIAL

viewpoint vernicepere

This week I stopped by the Hawaii Temple Garment Center to make a purchase. My mind was not completely on the commerce of the day, for at that very hour, one of our sons was sitting in a jet somewhere between Los Angeles and Tokyo, heading for his Japan, Sapporo mission assignment. As I left the parking lot, a young man stopped me. He asked "Are you a member of the LDS church?" I replied affirmatively. He held a pamphlet towards me, "Would you like to know the Christ of the scriptures?" I smiled, "Thanks, but I do!"

As I drove away I thought that I could have told him of our son the missionary. I could have added to that information the fact that our second son will leave this week for a mission assignment in Sendai, Japan. Immediately then, the thought of others came to mind -- Joe and Malia Ah Quin, whose two sons both left this summer for missions, and the Pele and Oliana Tautu family, whose four children are all currently out on missions around the world!

Somehow, in that context, the young man's question seemed presumptuous and raised others in my mind. Is the Christ of the scriptures any different from the Christ of the community of Laie? Is the Christ of the Hawaii Temple different to the Christ of the Tautu family? Does the Christ of Japan differ from the Christ of America?

Other questions crowded my thoughts: Why need I be a member of the LDS church before being asked that question? Isn't the knowledge of Christ for everyone? I wondered vaguely whether the young man would have questioned me if I had denied my Mormonism, -- or if I were Buddhist, Taoist, or Catholic.

This young man had a companion much like himself, and they had stationed themselves at the PCC tram tour stop where our guides pick up and deliver hundreds of Center temple visitors daily. Obviously these two young men appreciate the Center's role in offering the temple tour to its guests. They must also know the measure of successful missionary work that grows out of the combined efforts of our student guides and Visitor's Center missionaries. Presumably, visitors who are approached with these young men's question and accept their literature will now have a choice between at least two Christs.

The "Christ of the scriptures" and the Savior of the world should be, and in fact are, one and the same. Families throughout the church worldwide prepare their sons and daughters on the basis of their knowledge of the Savior. It is the knowledge of Christ that built the temple, the cultural center, and the campus. It is the knowledge of the Savior that founded Laie.

So, too, with the families of our community. We send our sons and daughters around the world to ask the question of every person of every religion and circumstance. It is an invitation we offer. -- An invitation to others to meet our friend and brother, Lord and Christ. It is extended entirely without coercion and with all courtesy. It too, is offered in the form of a question: "Would you like to know the Savior?"

BYU-HC Calendar

Friday, October 23rd

Devotional
Cannon Center

Saturday, October 24th

Movie
"The Elephant Man"
Auditorium, 6:30 & 9:30 p.m.

Ward 8
LUAU
Ballroom

Sunday, October 25th

Stake Fireside
Cannon Center, 7:30 p.m.

Tuesday, October 27th

Women's Volleyball
U of Hawaii
Cannon Center, 7:30 p.m.

Wednesday, October 28th

BYU Mini WVBall Tournament
HPC vs U Alaska
Cannon Center, 6 p.m.
BYU vs U Nev Reno
Cannon Center, 8 p.m.

Film Classic
Auditorium, 6:30 & 9:30 p.m.

Thursday, October 29th

Choir Concert
Auditorium, 8 p.m.

Women's Volleyball
Tournament
Losers game
Cannon Center 6 p.m.
Winners
Cannon Center, 8 p.m.