

UPDATE '87



Fat Boys Rap It Up

They're called **Fat Boys** and they know it. Originally from New York, these three young adults (19 and 20 year olds), are a popular new rap group in the music business.

On their first trip to Hawaii the Fat Boys came to the Polynesian Cultural Center to video some "Ins and Outs" for the Music Television (MTV) on cable television. "Ins and Outs" are 30 to 60 second spots used to introduce or end songs on the show. So the group filmed

here at the Center and used the footage for such segments.

In the Samoan Village the Fat Boys tried to start a fire, they learned how to crack and scrap a coconut, and they marveled at Sielu Avea's agility in climbing a coconut tree.

In the Maori Village they did a Fat Boy Haka (an English version which cracked up all of the guides and village workers who watched). People noted that even though the group are well

named they were very adept at the haka.

The program was broadcasted on the nationwide MTV station the last weekend in September on the mainland and the first weekend in October in Hawaii. An estimated 30 million people watched the Fat Boys talk about the Polynesian Cultural Center during those shows.

Deaf Groups At PCC

Lately, we've had a lot of deaf people visiting PCC and it has been an unusual experience for the guides to escort them around PCC. The Japanese guides have written up a special script which is passed out to the deaf Japanese and then when they are at a particular demonstration, the PCC guide points to the script and the guest can read about it on the script. This prevents the PCC guide from having to take time to write down everything during the tour and the guests have a more enjoyable time.

For those guests who understand English but are deaf, Henry Wang, a Chinese guide has been helping them. He learned Korean sign language. Since living in Hawaii, he has also started learning American sign language. He is not fluent with American sign language, but he has been very willing to use the knowledge he has to help the English deaf groups. In the last 2 weeks, he has taken around more deaf groups than Chinese groups and he has been praised very highly by the deaf guests he escorted.

We hope to get some guides in the future who are fluent in American sign language, but we are very grateful to all the guides who have guided deaf tours. They have done their best and it shows on the faces of their guests. A smile can be understood by anyone of any language.

Impossible Question Winner

Kekoa Kaluhiokalani a Student Supervisor in the Gateway Restaurant won \$150.00 answering FM 92's Impossible Question on Thursday, October 8, 1987.

Hard Work Appreciated

Dear Employees of the Polynesian Cultural Center:

We of the Support Services Division want to let you know how very much we appreciated your hard work on Saturday, October 10 here at the Center.

We want you to know that all your efforts to clean up really did make a difference and made our overall job a lot easier for some areas. A lot of you came and told us how much you now appreciate the Maintenance Department and all the manual labor that is done daily by us to keep the Center attractive and functioning.

It was fun to see secretaries down on their hands and knees pulling weeds, or vice presidents in the lagoon fishing out rocks and debris. But mostly it lightened our load and made us appreciate all of you and your willingness to help out.

Again, a real big MAHALO NUI LOA to each of you who helped us celebrate our 24th anniversary at the Polynesian Cultural Center.

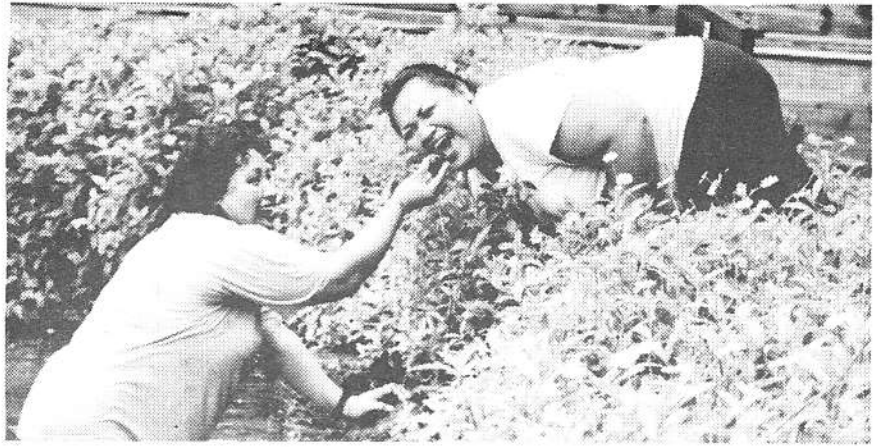
Sincerely,
Magi Keil



Security Bulletin

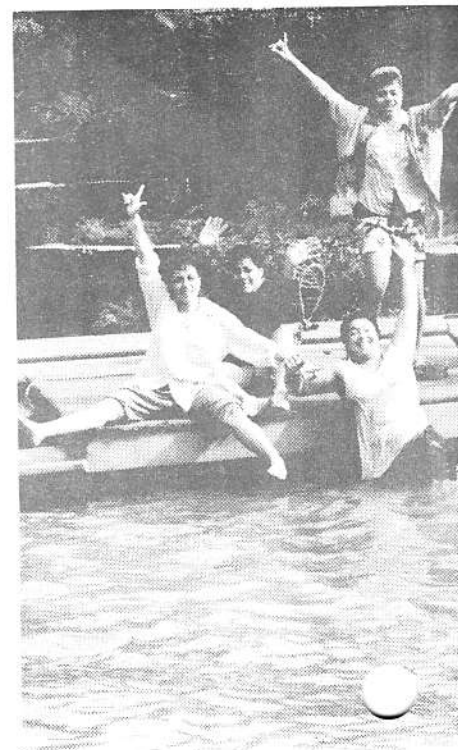
"Congratulations" to **Davina Lake** as she is transferring to Maintenance! She will now be in charge of all vehicle scheduling, safety checks, T.A.'s, and all clerical work in the Motorpool area.

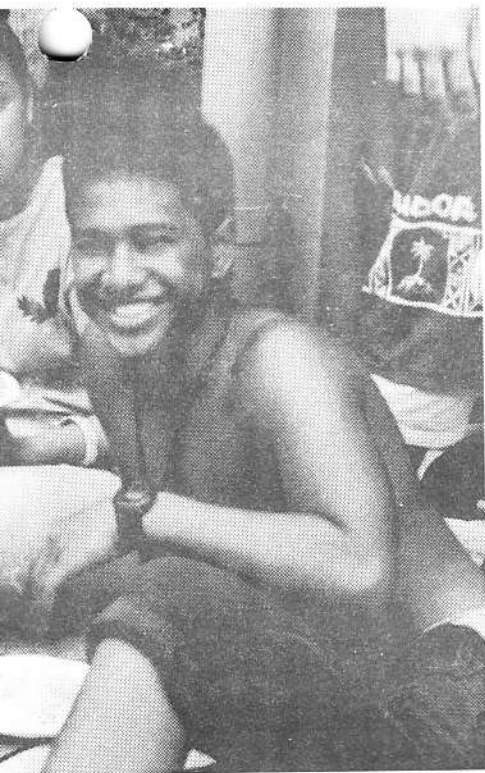
We would like to thank **Davina** for the good work she did, continuous support, patience and the friendship that she gave as the secretary for Security. GOOD LUCK and we will surely MISS YOU!





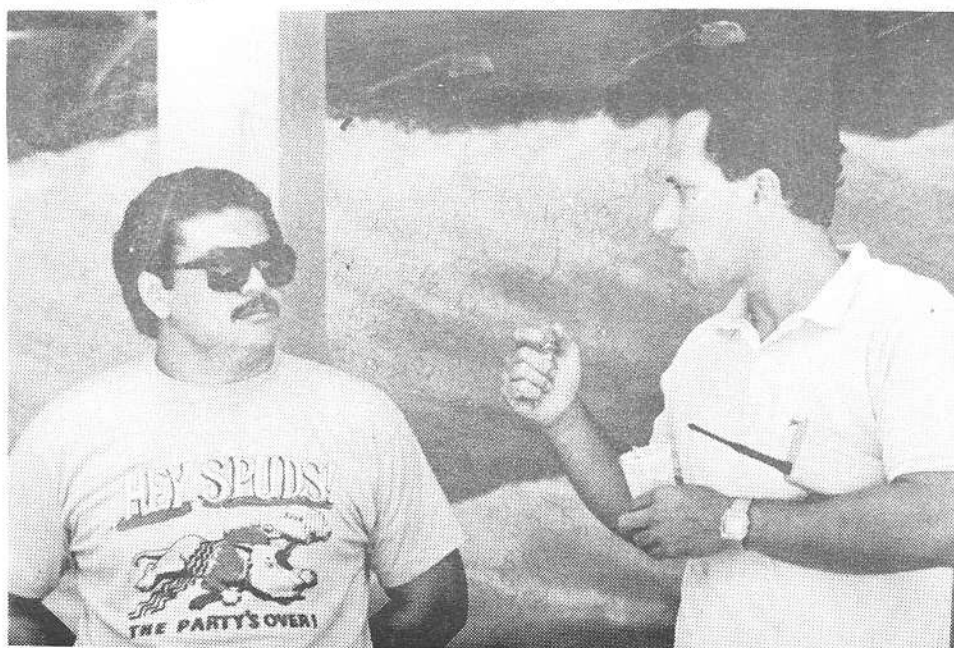
Our 24th Anniversary Celebration





Up - Breakfast - Kick Off





1987 W-4 Tax Forms

Please be advised that you must submit your 1987 W-4 tax form no later than October 13, 1987. To be in compliance with this law, Personnel will manually make adjustments to all employees who have not filed a new W-4 by October 13. This means all singles will be given a deduction of (1) and married employees will receive a deduction of (2).

If you have any questions regarding this matter, please call us at extension 3185.

Celebrating Birthdaze

Jill Vasconcellos
October 14th

Peni Kioa
October 22nd

Personnel Personals

As you will notice, our paychecks this week look a little different. DON'T PANIC!!! The reason behind it all is that PCC has a new computer system called Paciolan which is going into effect this week.

Your checks will vary in that there will be more information printed on it. It is important that you carefully look over the information making sure that everything is correct. This includes Social Security numbers, rates, department numbers, Federal and State exemptions, insurance and any other deductions that you may have.

Some new things to check for will be vacation accruals (if you are a full time employee) and your address. If you do find an error, please report it to Personnel right away, and we will gladly correct the problem. Our Personnel staff is willing to serve you in any way, so please feel free to drop by.



Prime Minister of New Guinea, PAIAS WINGTI, enjoyed a full day here at the Center on October 9, 1987. He and his delegation of twenty people were fascinated with the many activities here in the Center and reportedly had a "wonderful time with wonderful people."

"Let's Talk Housekeeping"

A "Standing Ovation" to **Nalani Redira**, daughter of the late **Stan Redira and Mary Redira** (Day Custodial Supervisor). Nalani directed the annual Easter Seal Telethon hosted by AMFAC this past weekend. Nalani, a 1986 BYU-HC graduate, utilized Keith Awai from the Center to provide the opening chant on the first Promo Team and several talented individuals from the Laie and North Shore areas. Nalani has directed many events at BYU-HC and was recently accepted for the Master's program at the University of Utah and will be leaving in the Spring of 1988. Congratulations!

Host Hotline

Please help us welcome the following folks: **Katie Jorgensen** joined HOST in September after working an internship in Human Resource as well as work in the Gift Shop at Marriott in Palm Desert, California during the summer. Currently Katie is attending BYU where she is a junior.

Mayla Marsing comes to us from Wyoming, where she & husband Mark owned a video business. Mayla attended BYU several years ago, and came back about 2 years ago to vacation. Upon returning to Wyoming, they decided that they liked the sun better than snow, so they sold their business and moved to Paradise.

Aloha United Way

Many of you have contributed to this cause for the past four years and I hope you will participate again. For those of you who have not participated in the past, I challenge you to search your heart and see if you can afford 50 cents, 75 cents, \$1.00 or \$2.00 per pay period so the less fortunate may have a chance in life. When I use the term "less fortunate", I am not speaking about the individuals or families who do not have a TV set or automobile at home. I am speaking of the blind who need a guide dog to get around, the sick who do not get treated because Medicare benefits are very limited, those who live and breathe only through the help of a life supporting machine, and individuals who plainly just do not have families or relatives to turn to when a life crisis strikes. There are many, many good reasons why you and I should give to this good cause besides those I have mentioned. The reason I do it is because I am in a position to help—even though my contribution is small.

Your manager or supervisor has a pledge card for you should you feel you can give a little each pay period. Your contribution can be deducted from your pay check on pay days. As you complete the card, indicate how much to be deducted each pay day. If you want to make just a one-time contribution, attach your check or cash to the card with the information properly checked and turn it in to your department secretary.

The campaign ends on the last day of October. So complete your card to-

day and turn it in while you remember. May I thank all of you, in advance, for your kind and unselfish attitude and action. May the Lord enrich your lives as you do the same to the less fortunate in our community.

Should you have any questions regarding any phase of the campaign, do not hesitate to call me. My phone number is ext. 3192 and I am located at the Snow Building (PCC side), 2nd floor.

Sincerely,
Sam Langi

Happy Birthday To You

Tigi Tapusoa
October 17th

Susan Sorensen
October 17th

Leslie Moeai
October 10th

DMBA Open Enrollment

Employees wishing to change their health plan can make those requests between November 1 through November 30 at the Personnel Office.

The changes you request will become effective January 1, 1988.

Social Security Changes

Employees wanting information on how the new 1987 Social Security changes affect you, please come to the Personnel Office to see Maka.

Update Notice

If you can't find any news of your department in the Update, please ask your manager and/or department secretary to make sure that you are not left out of the next issue.

Update will print all news sent in by the departments, but cannot print news that is not sent in.

EAT AT MAX'S

Oct. 23 - Nov. 6

Friday 23

Hamburger Steak, Sweet & Sour Spareribs, rice, corn, drink

Saturday 24

Braised Beef Tips w/gravy, BBQ Chicken, rice mixed vegetables, drink

Monday 26

Roast Beef w/gravy, Chicken Stew, mashed potatoes, pistachio salad, rice, drink

Tuesday 27

Baked Meatloaf w/tomato sauce, Teriyaki Pork, rice, peas and carrots, drink

Wednesday 28

Beef Curry Stew, Deep Fry Chicken w/gravy, rice, mixed vegetables, drink

Thursday 29

Spaghetti w/Italian sauce, Lasagna, garlic bread, rice tossed salad w/dressing, drink

Friday 30

Pork Chop Suey, Roast Chicken w/gravy, rice, corn, drink

Saturday 31

Turkey Tail, Chicken Pot Pie, gravy, rice, corn, drink

Monday, Nov. 2

Breaded Pork, Beef Pot Pie w/biscuits, rice, coleslaw, drink

Tuesday 3

Beef Tomato, Teriyaki Wings or Drumsticks, rice, corn, drink

Wednesday 4

Newburg, Baked Chicken, rice, drink, pasta salad

Thursday 5

Pot Roast Beef, w/vegetable gravy, Baked Mahi w/tartar sauce, rice, tossed salad, drink

Friday 6

Sandwiches: Roast Beef, Turkey, Homemade macaroni, salad, soup, drink