

Steve Ashton and Family Bid Aloha to Friends and Employees

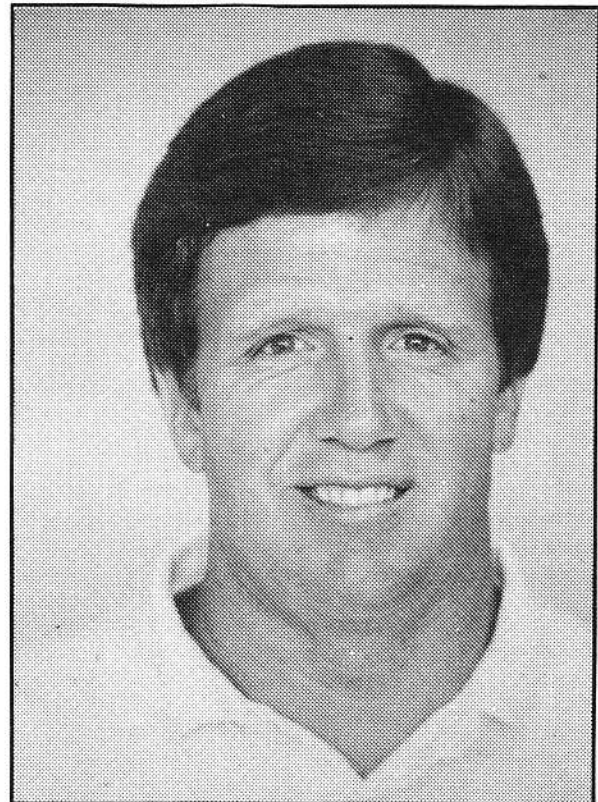
It is with mixed emotions that I attempt to convey my feelings to you, my good friends of Polynesia. Farewells always carry a measure of sadness, but the memory of shared joys and associations bring a happiness that Wendy and I will never forget.

For the past three years I have come to know you, many of you personally. And, in these years I have learned so much about the greatness of your cultures. My family and I will never forget how we were greeted and cared for in the true spirit of Aloha. You have taught us many things which we will take with us, and one of them is caring for other people, regardless of who they may be. My children are better people for their association with the children of Polynesia and, hopefully, they will carry many of your wonderful ways with them to influence others positively.

If there were a way I could influence you positively I hope you could get it from this message: You are an extraordinary and great people. Know this. In my associations with you I have seen so many qualities and so many potentials. I have seen kindness, love, physical strength, and great intelligence.

Thank you for your kind generosity, it has been our "staff of life" for these past few years.

By Steve Ashton



Steve Ashton
Senior Vice President

"Our Big Brother"

By Darlene V. Asuega

Clouds were dark gray over the Corporate Administration offices on an April day in 1983 when, suddenly, a blazing white moon burst through as unexpectedly as the clouds had appeared. This sudden rush of energy was soon to be recognized as Steve Ashton. Yes, this was, without warning, my new boss. Having had somewhat of a conservative employer a few minutes before, it was rather peculiar to be greeted with "How's it, babe!"

Steve didn't waste any time letting me know what he expected of me. This I was soon to learn was his entire manner of operating... "Don't waste time... the sooner you get to the bottomline, the sooner you get it done", or "Keep it simple Stupid."

In the next room things were rustling as a new administration was being born. President Rodgers had a task before him and I wondered with uncertainty how he would restyle the organization. That's when I began to realize what Steve's purpose was all about. President would direct with fascinating experience and Steve would play out his symphony briskly. Although the notes were simply played, the quality was as pure gold. What was this brilliant quality that Steve so unselfishly gave to others? It was his tremendous capacity to relate to anyone in any given situation, and always the "poor in spirit" would leave his office strengthened by

See page 2



Steve Ashton shows his excitement for receiving a McDonald's Happy Meal. The lunch was served during a special farewell Management Team meeting on Monday, November 4th.

some sort of magic... a magic that made one feel that one was of great worth.

Instances of this "relating" occurred and continues to occur with this "giant from Salt Lake." Whenever, I had an seemingly unsolvable problem, Steve suggested that I look within myself and to my own resources and always the problem would be solved. In a moment of family crisis, when a mother could no longer stand the pressures of losing a daughter, Steve telephoned the child over 5,000 miles away to strengthen her that she might strengthen her mother. Another employee whose life was torn by divorce, could not bring herself to face the grueling test of decisions. Steve sought her out, helped her set her goals and priorities in life. Today she is in the mainland, happy and content with the decision she had made on her own. Another had fallen into the hands of temptation and thought Steve would think him unworthy. How incongruent it would be for Steve to have judged him. Instead, his advice was to quickly pick up the pieces of his life and move swiftly to reconstruct ... and this time a blueprint was made with a strong foundation. Still, a former student employee, who is a promising athlete was slothful with his time. As this young man drifted about our offices one day Steve asked him what he was doing with his talent. The young man thought and for a while had forgotten this gift. Steve whisked him into his office and minutes later this young man had a goal in sight. Today he is accomplishing the tasks of this goal and one day we're sure he will be a star among the best athletes in the world.

Yes, clouds are no longer dark gray within Corporate Administration, and we know the blazing white moon will not always be full throughout the next year. We will then take what light we remember, and draw more strength from the reflection of the lesser light upon the waters... its reflections as pure as gold upon our lives.

Who is this man with such a generous capacity for strengthening others? He is my friend, "our big brother", a hauole with a Polynesian heart.



Steve and Wendy Ashton were surprised at the Management Team meeting Monday as they were treated to lunch from McDonalds. The Ashtons were given gifts and everyone paid tribute to them as they are returning to Salt Lake City this week.

Polynesian Cultural Center Promo Team Tours Okinawa

By Reg Schwenke

Item: Polynesian Cultural Center performing group selected by Hawaii Visitors Bureau to accompany Gov. George Ariyoshi to Japan to formalize Hawaii's Sister-State ties with Okinawa.

Item: Polynesian Cultural Center Okinawa Promo team publicly honored by Gov. Ariyoshi as among Hawaii's Best-ever ambassadors of Aloha.

It was an experience beyond words.

That it would be an exciting and interesting tour there was little doubt. That it would generate some very positive feedback for Hawaii and the Polynesian Cultural Center was an expected conclusion. That it would result as one of the spiritual highlights of our lives was something we never dreamed possible.

Not in our wildest imagination. But it was certainly that — and much more.

We lost count of the times we all fought back the tears during very special moments with our government hosts in Okinawa, Governor Ariyoshi, Governor Junji Nishime of Okinawa, the Okinawan people and the high-level Okinawan businessmen who all but adopted us, personally ensuring all our needs and wants were met.

It was truly a touching, memorable, unprecedented and an unexpected honor when Hawaii Gov. George Ariyoshi stood to address more than 800 persons in his final public speech on Okinawa's special relationship as Hawaii's sister-state in Japan — and spent the first three minutes of his English oration praising the "very special ambassadors from the Polynesian Cultural Center who proudly demonstrated the true spirit of Aloha."

He said: "Everywhere you've gone, everything you've done has come back to me with the highest of praise from all quarters and I'm proud of you and your efforts in representing the state of Hawaii. Everyone keeps talking about your marvelous performances, but what has impressed them most is your special aloha spirit, your professionalism, your attitude and the way you have conducted yourselves at all times...You have been tremendous ambassadors for the State of Hawaii and the Polynesian Cultural Center. I am proud of you."

Our function, after all, was essentially to serve as a background prop to enhance the governor's image and prestige in Okinawa. We far surpassed all expectations, shared his spotlight and publicly voiced our support, love and pride in him.

"You have made your Governor very proud." That observation by a senior Okinawan official said it all.

Walking offstage, the Governor waved off the Okinawan government aide waiting to escort him to his seat, saying "I want to go backstage to meet the performers."

He called out if everyone was "decent" and walked back to thank each performer individually, kissed and hugged the girls who proceeded to wipe off five varying shades of lipstick and joked with him about it. It was a rare and special moment.

In all, the Cultural Center promo team put on **Eleven** performances, although only six were scheduled.

The "official" performances were held at:

* Marine Exposition Memorial Park, Okinawa's premiere tourist attraction — which features various highly entertaining marine shows and one of the world's largest aquariums. Close to 700 persons attended. A humorous sidelight was a trained dolphin continually ringing a poolside bell during our performance — whether



PCC's Japan Promo Team performs at the Marine Exposition Memorial Park in Okinawa. The performance marked the beginning of eleven performances in less than 2 weeks

it was a signal for us to stop the commotion or its show of applause we don't know. We'd like to think it was the latter. No matter, the bell was removed.

* Okinawa Television (OTV) equivalent of Good Morning America (Okinawa's population is about 1.2 million). This 10-minute segment was highlighted by Keenan Kanahele's first fire-knife catching encounter in which he almost set a studio curtain aflame. It was a frantic but hilarious off-camera moment. Keenan still has burn marks to remember it by.

* Ryuku Broadcasting Corporation (RBC), Okinawa's only other statewide TV station. This 10-minute segment was during Okinawa's version of PM Magazine program. Both TV segments were live. A humorous sidelight was Delsa Mo'e's Tahitian skirt falling off during the TV taping. Fortunately, the main camera was trained on another dancer.

* The Main Event: The formal ceremonies officially sealing the State of Hawaii and Okinawa Prefecture as sister-states in the Harborview Hotel's spacious banquet room. The PCC group was scheduled to perform after a 20-minute revue of Okinawan dancing. We stole the show. A medley of old but popular Japanese ballads by Tolo Uso and Pulefano visibly moved many Okinawans, some to tears. Another chicken-skin moment. The 20-minute show was highlighted by both Gov. Ariyoshi and Gov. Nishime "volunteering" to try the Tahitian tamure — Okinawa's governor caught the spirit of the occasion and went wild, to the surprise and delight of Okinawan TV crews and the approximately 600 official guests. Both Governors were each presented with Maori 'Taiaha's' on behalf of President Ralph Rodgers. It was a warmly received and unexpected gesture — one of many spur-of-the-moment actions eagerly endorsed by Bryan Bowles and David Hannemann. Prior to our performance, Grace Tautu and Tolo presented both Governors with maile and orchid leis. It was also our first opportunity for Gov. Ariyoshi to see the work and effort that went into our fine traveling uniforms, the best of any previous PCC promo group. Credit belongs to Bryan, Pam's Special Project group and Elisae wardrobe crew.

See page 6



Employee Halloween Party "Rocks" PCC

Wednesday, October 30th, the Employee Relations Department sponsored an employee Halloween party. The celebration included dancing, rapping, lip-synching, decorations and refreshments. Many interesting and well prepared costumes were worn during the party. Mildred Cashman made a hit with her new image, Becky Rodgers and Tracy Williams showed up as the General Manager and wife, and Winnie Nelson looked like a Marilyn Monroe afterthought. Everyone enjoyed the music and food, and the guests really appreciated the contests.

The UPDATE salutes the Employee Relations Department for sponsoring the event. Here are some photos of the highlights of the evening.



* Okinawa International University, the second largest University in Okinawa with a student body enrollment of 3,000. We were welcomed with a lineup of many of the school's administration and faculty staff. The school president expressed his appreciation in a 10-minute pre-show speech. We were pleasantly surprised to see two pairs of American missionaries and a local Okinawan Bishop and his wife from the neighborhood ward. In a rousing solo performance, Keenan dedicated the unlikely combo of "I'll Remember You" and "Ten Guitars" to them — dressed or half-dressed in his Tahitian costume, dripping with sweat.

* Ryuku Shinpo Hall. The ultimate challenge: We were asked to put on a 90-minute, non-stop show with 11 performers before a capacity crowd of about 800 persons! Both Governor's made their final formal speeches celebrating the Hawaii-Okinawa sister-state ties, during which Ariyoshi addressed his remarks to the PCC group. It was our best show. It was also our last official performance, made even more special by the presence of American and Japanese missionaries from Okinawa's capital city of Naha who brought along their investigators. Not able to read our Japanese language press clippings, we did not realize the daily newspaper and TV stories mentioned that Hawaiian dance group were from the Mormon owned and sponsored Polynesian Cultural Center. The work had filtered to LDS members in the area who used it as an occasion to introduce their investigators to some of the Church's other activities. It was a poignant moment for Masaki Sakamoto, the Hawaii Visitors Bureau liaison man from Tokyo who accompanied the group to Okinawa. Masaki, a former PCC employee and BYU-Hawaii graduate who served a mission in Japan, was ecstatically reunited with one of his former "investigators" who had joined the Church following his mission. The former "investigator" had brought investigators of his own to watch the much publicized Mormon dance group from Hawaii. Indeed, not only were we official ambassadors for the state of Hawaii, but also very important and critical ambassadors for The Church of Jesus Christ of Latter-day Saints. The significance was not lost on us. I am convinced we proudly represented our state, our respective cultures, and our Church. At shows end, we invited all our special Okinawan hosts, friends and former Hawaii residents who had returned home to Okinawa to come on stage to sing Hawaii's state anthem and Aloha Oe. In the words of one local boy from Hawaii who went to Okinawa 13 years ago to seek out his 'roots': "You've make me homesick for Hawaii again. I haven't sung 'Aloha Oe' since I left...I wish I was going back with you." He had tears in his eyes. He was not alone.

The five unscheduled performances proved to be some of the most moving of the entire tour:

* Returning from a day-long excursion at the Marine Exposition Memorial Park, a quick decision was made that we would surprise Gov. Ariyoshi by welcoming him at Naha Airport on arrival in Okinawa. Despite the fatigue of the day's activities, everyone agreed. With only five minutes to freshen up at the hotel before catching taxis to the airport, we made it. Since it was not scheduled, we had to pay our own taxi fares to and from the airport. It was strange enough to see a Polynesian group in costume at Naha airport, but it was an even stranger sight to see a Polynesian group entertain outside the airport restrooms. The Governor arrived accompanied by Okinawan TV crews and he stopped to watch several Hawaiian dances, shook hands and kissed our female performers taking photos with the group. He then entered the airport's VIP lounge next door to the restrooms for a short press conference. The PCC group remained and sang until the Governor left the airport, stopping to take more pictures with the group. Tom Sakata, Vice President for HVB accompanying the governor, thanked group members for the unexpected greeting. It was a nice touch.

* On a brief sight-seeing stop at Manza-mo, an ancient cliff-top gathering place for villagers at Manza, our group was walking past



Promo Team member Delsa Moe in downtown Tokyo. The team wore their sharp traveling uniforms throughout the tour.

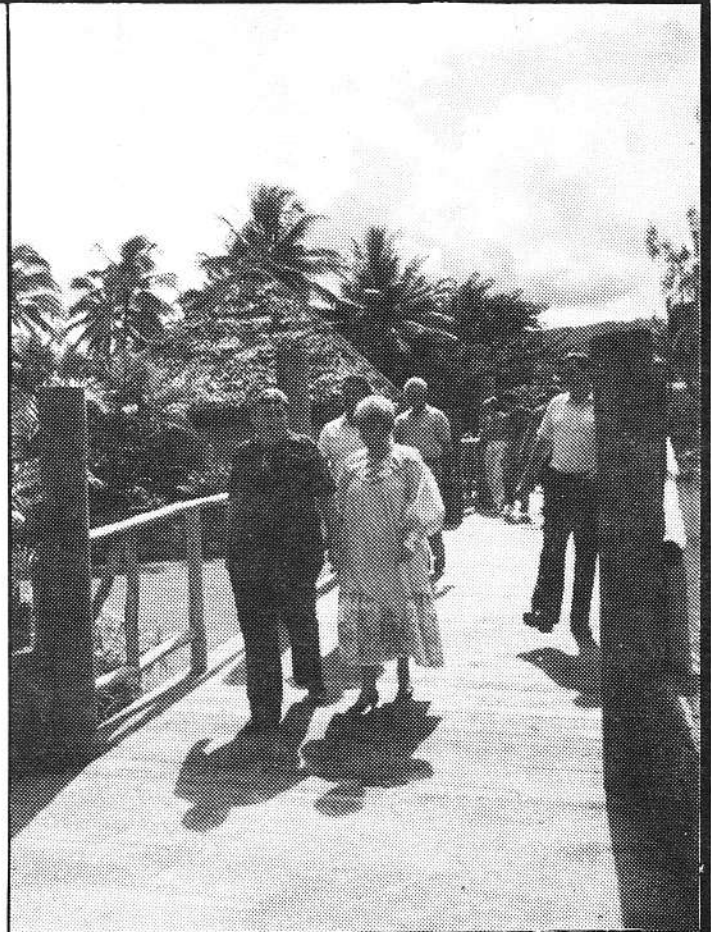
a number of small Japanese vendor booths in uniform when we were spontaneously applauded by all the Japanese merchants, fellow tourists, bus and taxi drivers. They didn't know who or what we were. Pulefano instinctively asked one of the group members to run back to the bus to get the guitars and we put on an impromptu performance right there. The reaction was overwhelming and touching. We did not speak their language, but the closeness and love felt at that time for these Japanese people was special. Tears of joy were exchanged by both the performers and from among the hushed gathering. They gifted everyone with silk Japanese leis. During the brief shopping jaunt in downtown Naha several days later, group members were approached by an excited group of Japanese couples. Through our interpreter, we learned they were tourists from Tokyo and had witnessed the short performance at the Manza-mo cliff and were excitedly expressing their joy and appreciation and asked if they could take photographs with the group.

* The night earlier, the PCC group performed a 45-minute impromptu show for the Harborview Hotel in the hotel's lobby area. We had offered to do so on arrival as a voluntary gesture of goodwill and discovered they had invited the media and top government leaders to watch the show. It was well advertised within the hotel and well received. It was not until much later that we learned the hotel's manager had upgraded us to deluxe-double-rooms on arrival. The Harborview is Okinawa's top-rated and most highly regarded hotel, although it was built 11 years ago.

* Sometimes, the things that work out best in life are those you



Max Purcell worked this week in the Tongan village as part of the management by working around program.



Managers take first official stroll over the new village entrance bridge during the ribbon cutting ceremony.

From the
**Employee Relations
Department...**

**THURSDAY NITE
SPECTACULAR**

TO BE HELD:
THURSDAY JANUARY 2, 1986
TIME: 9:30 — 11:30p.m.
PLACE: Pacific Pavillion—PCC
AUDITIONS for the PCC/Community Talent Show will be held the first week of December (exact dates and times to be announced).

To **REGISTER**, call Kim at 293-3035 before November 22. Piano and some musical instruments and equipment will be provided.

ATTENTION

All those planning to come to the Employee Christmas Party on Dec. 6th need to RSVP to Celva at ext. 3043 before November 18th. No reservations will be taken after that day.

UPCOMING EVENTS:

1. **Aerobics Class** — Being held on Mondays, Wednesdays and Thursdays from 5:15-6:15pm in the old training room. Instructor is Dalene Purdue and the class is co-ed.
2. **Mini Olympics** — Beginning Saturday, Nov. 23, with a 7-mile run from Turtle Bay to PCC. Continues Nov. 25, 26, 27, and final events will be on Thanksgiving morning, Nov. 28. Other events include raquetball, bowling, ping pong, billiards, video games, relays, track and field, obstacle course, tug of war. Get your teams together and contact Via Laumatia to sign up (ext. 3186). Look for details in next week's UPDATE.

**Another Great
\$WAP
MEET**

Saturday, November 16, 1985
7:00am — Noon
In the Parking Lot across from
Niu's Laie Chevron and
McDonalds

Admission is free for Buyers.
Anyone selling food will be required to have a temporary food permit. For all booth information and reservations call Kim at 293-3005

Continued from page 6

don't plan. This was certainly true for our farewell to Gov. Ariyoshi at Naha Airport. Since we were to leave later the same morning, we decided that very morning to see Gov. Ariyoshi off. He was scheduled to leave on an earlier flight. We surprised him again when we began singing as we approached him. He immediately walked over to the group to again offer his personal appreciation individually for everything we had done in representing him and the state of Hawaii. He happily hugged and kissed the girls, taking more photos with everyone. After mingling for a few minutes, he asked the group to sing "Hawaii Aloha," signalling his entourage and all the surrounding Okinawan government officials to join hands in a circle as we sang. As we concluded with "Aloha Oe," the feeling of love and fellowship was strengthened as many of us fought back the tears. Tom Sakata, HVB's vice president for Asia, again congratulated the team for the tremendous positive impact we had made in Okinawa. "You guys keep outdoing yourselves. You've been just fantastic. We're definitely going to use you again..."

An obvious sign of the impact we had made was that we had become full-fledged VIP's. We were escorted to All Nippon Airway's (ANA) VIP lounge to relax before our flight. We had become important celebrities in our short stay. We felt good. As we settled down to relax, we were informed Gov. Nishime was next door in an adjoining VIP room waiting to board our same flight to Tokyo's Haneda Airport. Another impulse decision was made to entertain for him. We couldn't get enough. It was yet another special moment. The governor and his aides were visibly moved as we danced and sang in the small, crowded room. His aides moved tables and lounge sofas to allow our performers to dance in pairs, one after the other. When we finally boarded, ANA had assigned First Class seats to our group right behind the governor. We felt special. We were special.

But it did not take long for us to hit ground zero. In Tokyo we joined the masses -- no different nor better than anyone else. We longed for Okinawa again.

At that point in time, we all had mixed emotions. To paraphrase the words of a famous Roman military general: "We went, we saw and we conquered." We had accomplished all we set out to do -- and much more, we had developed some very special and lifelong friendships. We were happy yet sad. We were looking forward to being reunited with our families and friends -- and yet we didn't want the experience and the warm glow within us to end.

I am convinced the emotional and spiritual "high" we all experienced was directly related to our daily devotional meetings held as early as 6 a.m. depending on our daily schedules. Each room (two persons per room) were assigned devotionals by Pulefano each morning and the messages were sweet, simple and soul-searching. They were great spiritual motivators. I agree wholeheartedly with Pulefano's observation: "If we had any non-members among us, they'd be converted by now." Pulefano and I shared a very special experience one morning at about 2:45 a.m. when Pulefano felt somewhat troubled and woke up to find a short note had been slipped under our door from one of the group members asking for a priesthood blessing. We made the appropriate preparations, dressed and went to administer to our colleague. That person fell off to a peaceful sleep while I tossed and turned for hours afterward. But it was worth it. We were both humbled by the experience -- grateful for our priesthood authority, the Gospel and the inspiration that can be ours.

Sharing our thoughts and feelings during the return journey, we all agreed that whenever we would see each other at work or school in Laie, we will recall and remember shared experiences individually and collectively. Cast together in a confined and foreign environment, we learned to trust and depend on each other. We learned to appreciate and empathize with all tourists who visit the Polynesian Cultural Center eager to take photos with the "natives" of Polynesia. For six days in Okinawa and Tokyo, we were "tourists" eager to take any and all types of photos -- in front of Japanese signs; alongside tour buses; outside restaurants we ate at; with Japanese people from all walks of life, especially those dressed in strange-looking costumes. The stranger the costume, the better.

More important, we feel we shared the light of the gospel with all we came in contact with. Whenever we were offered liquor at meals, our hosts would quickly intercede saying we did not drink alcohol -- explaining in Japanese some of our religious beliefs. Even our government hosts did not drink or smoke in our presence. We further impressed our hosts when we requested that we preferred to go to Church rather than go sight-seeing. They had trouble believing it. Our schedule prevented us from going to Church, but the point was made and reinforced.

If there was a shared and special secret thought among the 12 of us, it can be summarized in three words: I LOOOOOVED IT!

To Tolo Uso, Delsa Moe, Grace Tautu, Jolene Keliliki, Valerie Enos, Patricia Wilson, Pulefano Galea'i, Vini Purcell, Sielu Avea, Varen Berryman and Keenan Kanahele, a final thought: "I'll (always) Remember You."

CALENDAR

Friday, November 8th

UP With People

CAC 10:30

Beef curry stew, teri-chicken with sauce, steamed rice, tossed salad with 1000 island dressing drink

Saturday, 9th

Movie 6:30, 9:30pm

"Raiders of the Lost Ark"

Ballroom

CAC 7:30pm Womens VBall

District Championship

Pork chop suey, breaded pork with brown gravy, steamed rice, tossed salad with 1000 island dressing, drink

Monday 11th

Baked lasagna, sweet and sour spareribs, steamed rice, garlic bread, buttered mixed vegetables, drink

Tuesday 12th

Kalua pork, barbeque chicken, steamed rice, buttered peas and carrots, drink

Wednesday 13th

University Forum L.T. 10:30am

ASBYU Fashion Show Mall 10:30am

Film Classic "Comic Shorts"

AUD 6:30, 9:30pm

Baked meat loaf, chicken stew, steamed rice, buttered corn, drink

Thursday 14th

Know Your Religion

J. Elliot Cameron

AUD 7:30pm

Roast chicken with gravy, teriyaki pork, coleslaw salad, steamed rice, drink

Friday 15th

Devotional

CAC 10:30am

Movie 9:30pm "Turk 182"

BBall CAC 7:30pm

BYU-HC vs. California Baptist College

AUD 9:30pm

Salisbury steak, chili franks, potato salad, dinner rolls, buttered mixed vegetables, drink

The UPDATE is an employee newspaper of the Polynesian Cultural Center and is issued as a training tool of the administration of the Center. The UPDATE staff consists of:

UPDATE Supervisor David Rodgers
UPDATE Assistant Kerry Kingi
The UPDATE is printed by lava Posala of the PCC Graphics Department.

Submissions to the UPDATE should be received by Mon. at noon to be included in that week's issue. The UPDATE office is located in the Graphics office, ext. 3116 or Call Darlene Asuega at ext. 3005.