



Rex Fjendsen

Polynesian Cultural Center Employee Newsletter • Laie, Hawaii • Published Weekly • November 9, 1984

Photo by Mike Foley



This new aerial photograph of the Polynesian Cultural Center reveals many new features including the new landscaped mountains between villages.

Four Vice Presidents relocate in remodeled facilities

Several offices at the Center have or will be moving this week due to the relocation of several of the Vice Presidents. Vice Presidents Cy Bridges, Jim Jensen, Vernice Pere and David Hanneman will be relocating in closer proximity with the areas of the Center that they supervise.

Jim Jensen will be remaining on the second floor of the Administration Building but will be moving to a new office. As part of the relocation process, Jay Akoi and the Purchasing Department will be moving to the Administration Building in the old Special Projects.

Vice President Cy Bridges will be moving to the Village Operations Office after reconstruction and remodeling are completed.

Vice President David Hanneman will

be relocating in the second floor of the Maintenance Facility in the former Purchasing area making it more convenient to work with Maintenance, Receiving, and Security. Security has already moved to the second floor of the Maintenance Facility.

The First Aid Department will maintain both of their facilities in the Theatre and the Old Administration Building for continued service to guests and employees. However, the office located in the Old Administration Building is now directly adjacent to the Graphics Department.

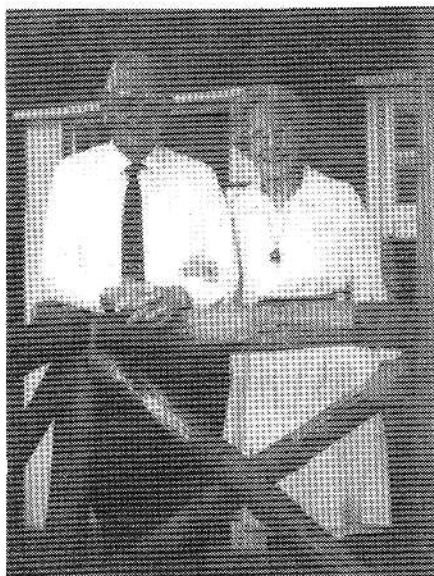
Some of the phone extensions will be out of order temporarily during the moves but all numbers should be in working order by the end of next week.

DMBA open enrollment

During the month of November, Center employees have the opportunity to change their medical plan coverage from Plan A to Plan B or vice versa, through the open enrollment period.

DMBA has also announced new options available to you under the Supplemental Group Term Life Insurance Plan. These may allow you to significantly increase the amount of coverage on yourself and your eligible dependants. Each employee should have received one, contact the Personnel Office. Employees should carefully review this brochure and the plan comparison enclosed. If you decide to change your medical plan, obtain a new enrollment form, complete it and return it to the Personnel Office by Friday, November 30, 1984. The change will be effective January 1, 1985.

Volunteer couple hosts Cultural Center chapel



Two volunteer workers are now acting as host and hostess of the Cultural Center Mission complex chapel. Ivin and Pearl Gee of Lander, Wyoming have been called by the First Presidency of the Church and the Volunteer Services of the Church to work at the Cultural Center for 18 months.

The Gee's arrived in the islands Nov. 1 with Ivin's brother Lynn Gee and his wife Eileen. A third brother, Merrill Gee and his wife Dorothy will be arriving in a few weeks. All three couples have been assigned to work in Laie as members of the LDS Church Volunteer Services. Lynn Gee will be teaching microbiology at the university and his wife will be working in the Registrars Office. Merrill Gee will be teaching Commercial Law and Seminary and his wife Dorothy will also be working at the University.

The Gee's say they are just six of nearly 26,000 volunteer workers who are self supporting, in addition to some 26,000 more full-time missionaries of the Church.

As host and hostess of the Mission Chapel, Ivin and Pearl will be telling Center guests about the history and influence of Christianity in Polynesia. Says Ivin, "We will be learning as we go along."

The Gee's have had plenty of experience talking with the public as they served as branch missionaries in Wyoming from 1957 to 1959 and as missionaries at the Washington D.C. temple from 1977 to 1979.

The couple began work on Nov. 6. They will be working Monday through Friday from 12:15 p.m. to 6:30 p.m.

The Gee's live in TVA and say that they already love Hawaii.

Employee Education Corner

The Raisin Principle

Bryan Bowles

My brother as a kid just couldn't swallow a pill. No matter what he tried, it just wouldn't go down. After threats of spankings or promises of candy, the pill always ended up on the tip of his tongue. My mother finally discovered a method that worked. She carefully cut a raisin open and inserted the pill. My brother would swallow the raisin with its hidden pill inside, but he was never able to swallow the much smaller pill alone.

The story is why I call it the Raisin Principle.

Sometimes taking the message straight is too much for people to swallow. But by inserting it in something larger it may go down. Put your information in such things as stories, music, and activities to help the

audience swallow it. People would rather be entertained than educated. You may have to entertain in order to educate more easily.

We at the Polynesian Cultural Center entertain to educate more easily. The two keys - entertainment and education - work together to produce a powerful medicine for our guests. We need both of them to produce our world famous show. If we just supply entertainment (music, jokes, games, dances) without the pill of education, we do little to fortify our guests. They also require the substance of some Polynesian education.

* Guests will learn more about tapa making if you entertain them with beats of your ike.

* Guests will enjoy your best jokes if you use those jokes to teach something like coconut husking.

It's called the Raisin Principle. Try it - it really works!

Next week I will let you know about people who are successfully using raisins and pill to produce strong medicine.

Times teams with PCC, Pacific Passport Giveaway

The Polynesian Cultural Center, Times Supermarkets, KDEO and KCCN radio stations have announced the biggest combined promotion ever undertaken by the Center. "The \$100,000 Pacific Passport Giveaway," as the promotion is titled, will begin November 19 and culminate in a special day at the Center on December 15.

Times Supermarket's 16 island wide locations attract more than 60,000 shoppers a day that will be eligible to enter "The \$100,000 Pacific Passport Giveaway." Official entry blank and prize list flyers, including a message from General Manager Ralph Rodgers, will be distributed at Times Supermarkets. Those wishing to enter the contest will fill out and deposit the entry into either the KDEO or KCCN boxes provided, requiring them to listen to the station of their choice for the next few weeks to listen for their name to be drawn as a prize winner. Names will be announced over the radio each hour between 6 a.m. and 8 p.m. from November 19 through December 12. Three names will be announced each hour, winners being awarded 4 tickets each to the December 15 day at PCC. At 5:00 p.m., prizes including a six day ocean cruise for two, trips for two to New Zealand, Hong Kong and London, a Sanyo computer system worth \$3,000, neighbor island weekend vacations, \$500 gift certificates for Hilo Hatties, Prides of New Zealand and Times Supermarket, and more. Employees not eligible.

Don't Promise What You Can't Deliver!!

"I'll have your parts in two weeks."
Four weeks later the parts arrive.
"I'll put it in your hand the minute you walk in the door."
But all you get when you walk in is a handshake.
"Dinner will be at 6:00."
But as you dip your spoon in the soup, the clock strikes 7:45.
"The doctor will see you in five minutes."
35 minutes later you're greeted cheerfully:
"And how are we today?"
Avoid a lot of grief and inconvenience for the people you deal with.
Think before you announce how long something will take - and then deliver what you promised.
On time.

Grateful Goldberg guest gives, employee is awarded



General Manager Ralph Rodgers has awarded the \$25 award to Loni Manning of the Public Relations Department for her service to a Center guest. The following letter was received from Margaret and Harold Goldberg:

Dear Miss Manning:

Again many thanks for all you've done to make Mrs. Goldberg and I so relieved in being able to receive those beautiful photos for our albums. We certainly would have had to do without them since my camera wasn't loaded correctly and our chances of getting back to Hawaii are very remote. Thank you for the anniversary program you sent 9-28. I am enclosing a check for the BYU Scholarship Fund. It isn't a great amount, I know, but perhaps we can add more at a later date.

It is truly a wonderful service you have done in our behalf. God be with you and your Cultural Center.

Very sincerely,

Harold and Margaret Goldberg

Carver's bone reproductions indential to rare artifacts

Wild boars tusks and whales teeth are a rare commodity these days and were in danger of becoming extinct for use at the Center until sculpture students were directed to begin producing look alikes for these rare and overly used items.

According to Carver's Hut artists David Eskaran and Joel Nakila, they are now creating replicas of the boars tusks and whales teeth that can be used by performers who wear them as part of their dancing costumes in the Center performances. Says Joel, "If an enthusiastic performer breaks a real bone artifact it cannot be repaired or economically replaced the next day.

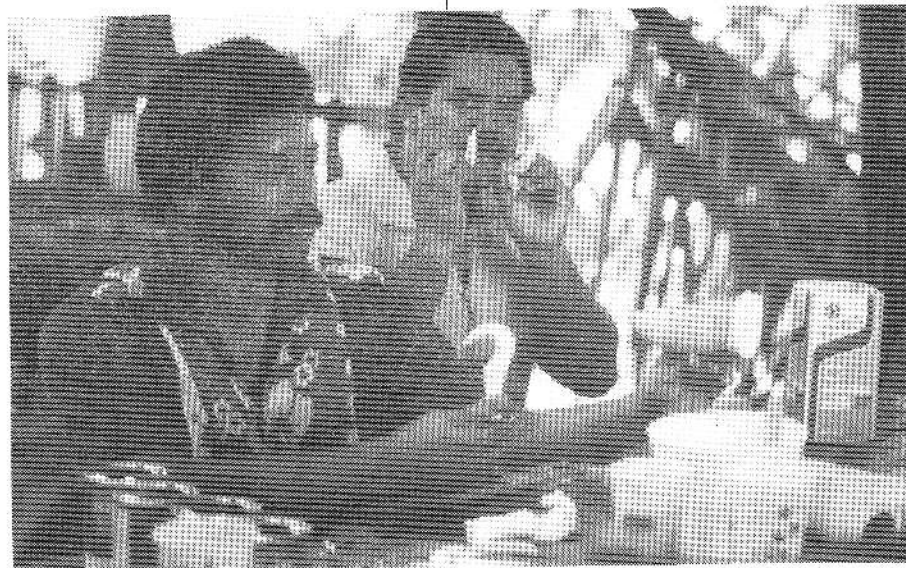
The artists are producing the look alikes by creating rubber molds of the bone artifacts and then casting them with a plastic resin

material. According to the artists, a man who works with live boars recently examined one of the look alike tusks and swore it was a real tusk.

Each casting takes about a day to complete, as it must cure and harden in the mold and later be stained on the surface to add coloration similar to their artifact counterparts.

Other advantages of the resin objects include its light weight property important to performers who wear them while dancing and economy of cost. The items may also be used for displays, making it possible to keep the now rare and priceless artifacts under protection.

This experimental program was pioneered by Vice President of Product Cy Bridges.



Lavaka services held

Funeral Services for "Hema" Sione Lavaka will be held Saturday, November 10, 1984 at 10:00 a.m. in the new chapel on Naniloa Loop.

Aloha United Way

The Aloha United Way campaign will end today, November 9, 1984 for those still interested in making a contribution.

Group photo for sale

All those interested in ordering copies of the employee group photo, should contact Tammy Au at ext. 3043. Orders and payment must be made by the November 19 deadline. No orders will be accepted after that date. The cost of the 8 X 10 inch black and white photo will be \$1.50, and should be paid to Tammy Au in the Special Projects Dept.

New brochures arrive



Tahitian Supervisor Mahana Pulotu admires her portrait on the new four color brochure poster.

Advertising Manager Mike Foley has announced the arrival of the new four-color rack brochures and 1985 tariff cards. The new brochure displays many exciting photos including new facilities at the Center such as the misison complex, shave ice stand and a colorful map of the entire grounds. The cleverly designed brochure opens into a full color poster highlighting cultural activities from several villages with a view of the new Fijian tower in the center background.

Brochures and 1985 tariffs are distributed by the Sales and Marketing Department.

EMPLOYEE LUNCHEON MENU

November 1984

MONDAY	TUESDAY	WEDNESDAY	THURSDAY	FRIDAY	SATURDAY
<p>5</p> <p>Roast Beef Brown Gravy Steamed Rice Seasoned Mixed Vegetables Cold Drink</p>	<p>6</p> <p>Samoa Chop Suey Steamed Rice Pineapple chunks Cold Drink</p>	<p>7</p> <p>Salisbury Steak Natural Gravy French baked potato Steamed Rice Hot Vegetables Cold Drink</p>	<p>1</p> <p>Roast Pork Brown Gravy Mashed Potato or Rice Toss Salad Cold Drink</p>	<p>2</p> <p>Hawaiian Plate Beef Curry Steamed Rice Hot Vegetables Cold Drink</p>	<p>3</p> <p>BBQ Chicken Natural Sauce Steamed Rice Hot Vegetables Cold Drink</p>
<p>12</p> <p>Baked Hamburger w/ Marcaroni Steamed Rice Pineapple chunks Cold Drink</p>	<p>13</p> <p>Irish Beef Stew Steamed White rice Toss Salad with Dressing Cold Drink</p>	<p>14</p> <p>Chicken Cacciatore Steamed Rice Seasoned Hot Vegetables Cold Drink</p>	<p>15</p> <p>Meat Loaf w/ Brown Gravy Brown Baked Potato Steamed Rice Hot Vegetables Cold Drink</p>	<p>16</p> <p>HAWAIIAN PLATE Chicken Stew Steamed Rice Corn Cold Drink</p>	<p>17</p> <p>Steamed Franks Pork & Beans w/bacon Cold Potato salad Chopped onions Cold Drink (ketchup & mustard)</p>
<p>19</p> <p>Pork & Cabbage Steamed Rice Pineapple Chunks Cold Drinks</p>	<p>20</p> <p>Braised Beef & Noodles Steamed Rice Seasoned mixed vegetables Cold Drink</p>	<p>21</p> <p>Shrimp Chicken Steamed Rice Tossed Salad Cold Drink</p>	<p>22</p> <p>Thanksgiving Day Roast Tom Turkey w/gravy Bread Dressing-Hot Veg. Chilled Cranberry sauce Mashed Potato & rice Pumpkin pies Cold Drink</p>	<p>23</p> <p>Teri - Pork slices Natural sauce Steamed rice Seasoned Hot Vegetables Cold Drink</p>	<p>24</p> <p>Turkey Ala-King Hot Biscuits Steamed Rice Seasoned Hot Vegetables Cold Drink</p>
<p>26</p> <p>Deep Fried Curry Chicken w/ sauce Steamed Rice Toss Salad/dressing Cold Drink</p>	<p>27</p> <p>Pot Roast Beef Natural Gravy Mashed Potatoes - Rice Seasoned Hot Vegetables Cold Drink</p>	<p>28</p> <p>Baked Lasagna Garlic Bread Steamed Rice Toss Green salad w/dressing Cold Drink</p>	<p>29</p> <p>Pork w/gravy Steamed Rice Buttered Peas & carrots Cold Drink</p>	<p>30</p> <p>Hawaiian Plate Deep Fried Chicken w/gravy Steamed Rice Hot Vegetables Cold Drink</p>	