



Polynesian Cultural Center

UPDATE '90

Employee Newsletter

Friday, November 9, 1990

President Bush Gives PCC Band Double Thumbs Up



It was, quite simply, a thrill to shake the hand of the President of the United States.

I have met several other U.S. presidents over the years, and so I rather routinely went along to the fundraising party on Oct. 19 in Waikiki to cover the PCC/BYU-Hawaii brass band and, perhaps, get a few photos of President Bush.

Our band got in free, naturally, but we had also been given a couple of tickets for photographers. Everyone going through metal-detector gates and the close hand-inspection of all camera gear reminded me of the elaborate security measures the U.S. Secret Service took at the Center in 1984 when Zhao Ziyang, President of the People's Republic of China, visited us — guard dogs patrolling the grounds, Capitol Police every 50-yards around the perimeter, scuba-divers checking out the lagoon, and the ever-way bodyguards, all sprouting miniature earphones.

The pupus weren't bad — veggies and dip, chicken wings, baby ribs and some other munchies with mean petit-fours for dessert — but the band wisely went to Sizzler's after the affair. While the main crowd were munching, VIPs held a private reception where for \$1,000 per person they could have pictures taken with the President.

I was surprised to find I could have an excellent front-row spot if I was willing to stand on it for 45 minutes and wait. Meanwhile, the band played repertoire favorites and other groups performed; but, frankly, the people around me weren't paying attention.

Then, as the audience swelled in size and the President's entrance drew near, an interesting thing happened: A sense of anticipation energized the crowd. People began to boogie to the band. "Bula Laie"

was baaad, and everyone grew more excited.

Suddenly, the band struck up "Hail to the Chief," and in strode the President of the United States. He gave our PCC band a big smile and the double-thumbs-up sign for their efforts. It was great!

I'm not very political; but it was a terrific experience. President Bush did his party plugging and gave a good speech. I was quite impressed with his personal energy that doesn't come across on television.

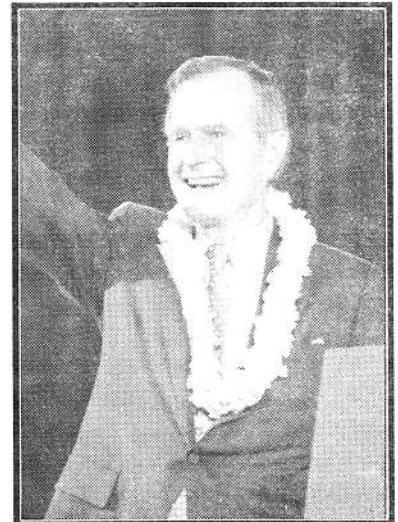
Afterward, something even more exciting happened: President Bush started to exit right, and then suddenly did a 180 back toward the band. Neither the Secret Service nor the media expected it, and they literally trampled each other to get in front of him again.

The President shook hands with several members of our band, and then worked the audience down the front row until it was my turn. It was definitely a chicken skin moment.

By the way, he has a firm grip...

— by Mike Foley,

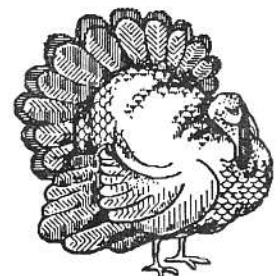
V.P. of Public Relations

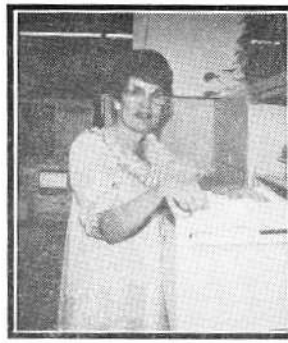


In This Issue

- Don't forget to pick up your **FREE** anniversary photo from Special Projects!
- Halloween Photos
- HAWAIIIMAX Crew
- New Missionaries!
- Korean Air Force VIP
- Blood Bank Drive

**Deadline for the next
UPDATE is Fri. Nov. 16**





Welcome New Missionaries!

We would like to introduce and welcome our newest missionaries. Replacing Elder & Sister Davis is Elder Owen Ford and Sister Dorene Ford. The Fords come to us from Phoenix, Arizona. The Fords are parents of one daughter and two sons and with a total of thirteen grandchildren. They have served one previous mission in the Hartford, Connecticut Mission in 1988-89.

By profession, Elder Ford is a former Civil Engineer with the Arizona Department of Transportation. Sister Ford has been busy as a wife, mother and homemaker. Elder Ford is a former Bishop of the Phoenix 28th Ward and has hobbies and interests which include: fishing, snorkeling, photography, reading and travel. Sister Ford, who currently also serves as Relief Society Pianist in the BYU-Hawaii Sixth Ward enjoys music, cooking and baking.

The Fords will be working in the Chapel/Mission Home area in the afternoons. In the mornings, Sister Ford will be working on the Center's Oral History program. Elder Ford will be doing several engineering projects for the Center in the mornings as well.

We would like to encourage all of our employees to welcome the Fords into our PCC family. Get to know this special missionary couple and make them feel at home.



Concessions Corner Employee Notes

A Special Mahalo to Bette Ahloy and Tareta Pu in assisting Delite Lead, Danielle Sika on November 1, when she was seriously injured. It is employees like these who have the initiative and sensitivity and who truly care about their fellow workers that makes working at the Center worthwhile. Thanks again, we appreciate you.

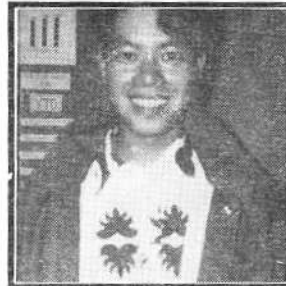
The Concessions Department would also like to recognize their Employees of the Year 1990.



Tofi Nalesoni from Tonga is the Student Lead at Kaukau. She is majoring in Biology with a minor in computers.



Shinako Adachi from Japan is majoring in Speech Communications. She is the Student Lead at the Maori Concessions Stand.



Wallace Wong is from Canada. He works in the Theater Snack Shop.



Uluni Mataele, from Tonga, is majoring in Business Management and is a Student Lead at the Tahiti Hut.



Katherine Lum from Singapore is majoring in Business Management and is an accounting clerk at Concessions.



Evie Malea from Hawaii is the Senior Cash Verifier and Trainer.

HAWAII MAX WORKERS ANNOUNCED



The announcement of the initial workers for the HAWAII MAX Theater have been announced. Raymond Mokiao, Staff Assistant to Vice President W. Bryan Bowles, has been announced as the Manager for the Theater. Taofi Magalei has been chosen as the Chief Projectionist; with Maurice Soliai as Relief Projectionist.

The trio have just returned from the mainland where they were able to tour several other IMAX® theaters. They visited the IMAX® theater in L.A. at the California Museum of Space, the OmniMax® at Waterfront Park in Seattle, the Eames IMAX® Theater in the Pacific Science Center in Seattle, and the Rubeen Fleet Space Theater in San Diego.

On this trip they were able to see how other IMAX® operations are run. They were also able to begin developing a network of contacts among the technical and managerial workers.

As mentioned earlier, Raymond Mokiao most recently worked as Staff Assistant to Bryan Bowles, prior to this assignment he worked in the training department. These are just the most recent assignments in his 16 years with the Center. Raymond received his Bachelor of Science degree from Brigham Young University in 1989.

Taofi Magalei, Chief Projectionist, comes to us from BYU-Hawaii where he worked as the Manager of the BYU Store for 8 years. He has also worked with Continental Airlines for 11 years in their Customer Sales & Service area.

Maurice Soliai, Relief Projectionist, has worked here in the Center in the Concessions area and the Theater department. While in Utah he worked as a projectionist and head usher for a Cinema theater. He is a graduate of BYU-Hawaii with a Bachelor of Science degree in Travel Management and Office Management.

Other announcements included: Assistant Projectionist, Harry Brown, and Theater Technical Director Sione Pasi. Although both men already have full-time positions they will be trained as additional technical personnel.

Theater Manager, Raymond Mokiao also announced that employees, who have been anxiously waiting for over a year, will be able to see the "Polynesian Odyssey" and tour the HAWAII MAX theater according to a special schedule during a week of November 27 - December 1.

We would like to welcome these men to their new positions and we encourage all employees to get excited about the HAWAII MAX theater.

National Championship Fever!!!

Volleyball junkies get ready...If you are looking for three days of watching the nation's finest women's volleyball programs compete for championship honors read on...



BYU-Hawaii will host the 1990 NAIA Women's Volleyball Tournament this November 15, 16, and 17. It will mark the second year in-a-row the tournament will be held at BYU-Hawaii, and promises to be the most exciting tournament of its type ever.

The tournament will feature 400 coaches and athletes from throughout North America, representing 20 teams, including our own BYU-Hawaii Lady Seaside.

This year's tournament format will consist of four pools of five teams each. Following the round robin pool play, the top two teams from each pool (A,B,C, & D) will advance to an eight team single elimination national championship round.

BYU-Hawaii qualified for the tournament, not only as host, but by virtue of winning the NAIA District 29 Title last week. The Seaside finished the season ranked No. 3 in the country, behind No. 1 St. Francis -IL, and No. 2 Hawaii Pacific.

SEE YOU THERE!

Special Projects

Movie Tickets

\$4.00

Airline Coupons

Aloha \$ 38.00

Hawaiian \$ 38.00

and

Don't forget to pick up your
FREE employee
anniversary photo!

Guest Services Corner

Employee of the Month



We would like to congratulate Justine Togia for being chosen the September Guest Services Employee of the Month! Justine joined the Ambassador guides during the summer months with a firm desire to work with people and to share her culture. Justine comes to us from New Zealand and is the wife of Lloyd Togia. Her outgoing personality is a natural as she meets her guests. Justine has had some modeling experience but has chosen to major in early childhood development. We are thankful for her warm spirit of "Aloha" . . . Mahalo Justine.

The 3 L's of Customer Service

Looking to Serve... "I feel that we should try to be aware of people who are just wandering aimlessly with no idea of which direction to go. The same applies for those in wheel chairs. In both cases, a helping hand is always appreciated to ensure an enjoyable day at the Center." **Karen Grenfell, New Zealand Village**

Listening to Serve... "Means to simply listen to the guests problems or complaints and try to solve them as soon as possible. PCC's credibility can be effected by how we perform." **Edward Tague, Gateway**

Loving to Serve... "Is to help the guest with a warm heart. Maybe it's the 100th time you've been asked for directions, or times for the shows; your reply should be as if its the first...even if you don't feel like it." **Karen Grenfell, New Zealand Village**

20%

Discount on America West Airlines for PCC Employees!

As a mahalo to the Center for working closely in Promotional experiences, America West Airlines is pleased to offer a 20% introductory discount to all employees of the Polynesian Cultural Center. In order to qualify for this discount you must travel by **December 15, 1990**. The employee must provide America West with a company I.D. or a letter verifying their employment. The employee must travel. Immediate family (spouse, children, parents, and grandparents) may travel with the employee with a letter verifying family relationship.

To get this great discount follow these simple steps: **(Do NOT call a travel agent for this fare)**

1. **Call in your reservations normally to the America West Reservations office at 1-800-247-5692.** You do not need to tell them you have a discount.
2. Obtain the **record locator number** for your reservation.
3. **Call the Honolulu Ticket Office 971-2810,** and advise America West of you employment at the Center and of the record locator number of your reservation.
4. **Follow instructions from America West on ticket payment and pickup.**

Conditions:

- * Travel must originate in Hawaii
- * The 20% discount applies to any published fare available on America West Airlines; discount fares, full coach, business class or first class (where applicable). Discount is not available to interisland flights.
- * All rules governing the applicable fare apply, regarding advance purchases, payment requirements or other restrictions.
- * All employees who are not members will be enrolled in America West's frequent flyer program, Flightfund, and receive the following:
Enrollment bonus of 2,500 miles
One time 5,000 for one-way trip from Honolulu to the Mainland

Korean Air Force Visitors



High ranking Republic of Korea Air Force Officers enjoyed an after luau-dinner tour of BYU-Hawaii and the Hawaii Temple grounds with Vice President T. David Hannemann and their student guide and interpreter Byung Suk Yoo on a recent visit to the Center.

President Christensen hosted them in a brief reception in his office prior to their memorable cultural experiences in the Villages and at the evening show.

The officers sitting in the electric cart left to right are: Colonel Kim, Kyu Sik, Chief of Combat Intelligence; Major Lee, Byung Gil, Air Analyst; Colonel Lee, Tae-In, Chief of Target Tactical Intelligence Group; Mr. Yi, In Hui, Chief of Bilateral Relations, Detachment 32, Pacific Special Activities Area and their U.S. escort Captain Jeremy S. Morrow, Foreign Liaison Officer, Operations Intelligence Headquarters, Pacific Air Forces.

Happy Thanksgiving
November 22



Village Corner

Promo Team Meets Former Center Workers

The promo team, in together with the Hawaii Visitor's Bureau, recently returned from Dallas, Texas last week. The 3 day promo was led by Gaylene Nikora, Assistant Director of Sales for the Center. LIMRA (Life Insurance Marketing and Research Association) convention was attended by CEO's of every insurance company in America. Dallas seems the perfect location for the convention, with its warm climate and spacious hotel accommodations. Leows Anatole is the largest hotel in the southwest of the United States. It is the most complete convention center in America.

What was nice about this particular promo was the reacquainting of several former Center workers. Many of us remember Rene Tetuanui who worked at the Marketplace for several years. He is now residing with his family in Las Vegas. He teaches tahitian classes (6 classes per day), while his wife teaches 5th grade in a local elementary school. Rene (and family) send their Aloha to all their PCC associates. Another former worker that crossed paths with the group was Jack Damuni. Former Gateway worker and Theater worker, Jack is presently attending Dixie College on a football scholarship. The promo group observed that he looks more like a basketball player, especially with his contemporary haircut. Some workers may remember Solomon and Bella Magalei, PCC workers from way back. They presently reside in Dallas, ahs say that they really miss their cooked breadfruit.

We would like to thank the following people for a job well done last week. Those who participated were Harry Brown, Bobby Akoi, Aurie Kekauoha, Kim Mitchell, and Maka Harris. Those who assisted in this promotion were: Jack Uale and Ellen Gay DelaRosa.

Village Birthdays

Mele Huakau	Nov. 1
Teri Lehman	Nov. 1
Keith Awai	Nov. 3
Yolande Tehina	Nov. 8
Isabella Peterano	Nov. 2
Enele Ongoongotau	Nov. 11
Mereisi Salaba	Nov. 20
Claude Teamotuaitau	Nov. 23
Val Jeremiah	Nov. 25

HALLOWEEN HAUNTINGS

ON THE DAY OF HALLOWEEN MANY GHOSTS, GOBLINS, PIRATES, AND SPOOKS CAME TO THE CORPORATE OFFICES FOR A LITTLE TRICK-OR-TREAT. THE GROUPS WHO CAME WERE THE BY/PARENT/CHILD CARE GROUP.



WHILE THEY WERE HERE WE WERE TREATED TO A SERIES OF SPECIAL SPOOKY SONGS. THE CHILDREN WERE VERY HAPPY TO GET THEIR TREATS FROM CONSTRUCTION WORKER, DELSA MOE; OR FROM CLOWN, ZEE YADOW FROM BANK OF HAWAII. MAHALO FOR A GREAT HALLOWEEN TREAT!

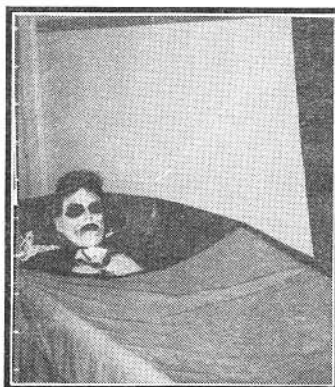


CONCESSIONS HALLOWEEN BASH!

HERE'S A LOOK AT THE CONCESSIONS HALLOWEEN PARTY! IT WAS A SPINE TINGLING ARRAY OF WITCHES, SKELETONS, SPOOKS OF ALL KINDS HAVING FUN WITH TRADITIONAL GAMES LIKE BOBBING-FOR-APPLES AND OTHER SCARY SURPRISES. TAKE A LOOK FOR YOURSELF!



EVIE - THE
WICKED WITCH



MIKE- THE DREADED
DREADCOLASTRIKES
AGAIN!



BOBBING FOR
APPLES...OR DESERT
THE HARD WAY?



THE REWARDS OF
DILIGENT EFFORT...
WET BUT FUN



WAITING FOR
THE HAUNTED
HOUSE (FAMILY
AND FRIENDS)



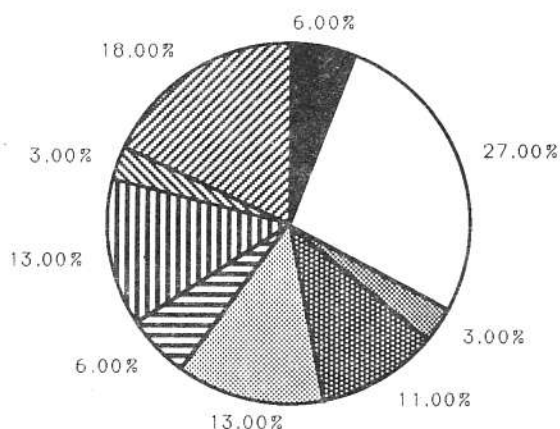
Aloha United Way 1990 Campaign

Once again it is time to ask for donations to the Aloha United Way fund. Donations can be paid in cash or can be deducted from paychecks regularly.

People often ask how much to they should give to Aloha United Way. No one can, or should, tell you how much to give. That is a decision only you can make based upon income, family obligations, and your personal situation. Many people want a guide for consideration. The Suggested Giving Guide has been developed to serve as only that...a guide.

Annual Income	Gift %	Annual	Monthly	Semi-Monthly
up to \$9,999	.6	\$60.00	\$5.00	\$2.50
\$10,000-11,999	.7	\$84.00	\$7.00	\$3.50
\$12,000-15,999	.8	\$128.00	\$10.67	\$5.33
\$16,000-19,999	1.0	\$200.00	\$16.67	\$8.33
\$20,000-24,999	1.5	\$375.00	\$31.25	\$15.63
\$25,000-29,999	2.0	\$600.00	\$50.00	\$25.00
\$30,000-49,999	2.25	\$900.00	\$75.00	\$37.50
\$50,000-over	3.0			

Just in case you are wondering where the money goes to, here is the answer.



6%	Residential, Vocational, Rehabilitation Services
27%	Family Support Services
3%	Special Education
11%	Community Service Centers
13%	Social Support Services
6%	Family Transition Services
13%	Youth Services
3%	Community Health Centers
18%	Health Education Services

For more information contact Sam Langi, Human Resource Division, ext. #3185.

THE LAST DAY TO REGISTER IS NOVEMBER 15!

EMPLOYEE MENU

Fri., Nov. 9

Teriyaki Pork
w/Natural Sauce
Seasoned Peas
Steamed Rice
Cold Drink

Fri., Nov. 16

Chicken Stew
Potato Salad
Steamed Rice
Cold Drink

Mon., Nov. 12

Pork Chop Suey
Strawberry Parfait
Steamed Rice
Cold Drink

Mon., Nov. 19

BBQ Chicken
Peas & Carrots
Steamed Rice
Cold Drink

Tues., Nov. 13

Salisbury Steak
w/Onions & Gravy
Corn
Steamed Rice
Cold Drink

Tues., Nov. 20

Beef Curry Stew
Tossed Salad
Steamed Rice
Cold Drink

Wed., Nov. 14

Teriyaki Wings
& Drumsticks
Mixed Vegetables
Steamed Rice
Cold Drink

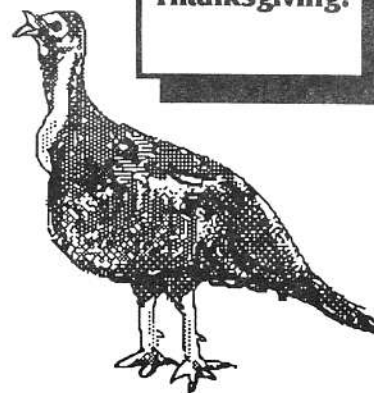
Wed., Nov. 21

Turkey w/ Stuffing
Mashed Potatoes
& Gravy
Cranberry Sauce
Corn on the Cob
Pumpkin Pie



Thurs., Nov. 15

Lamb Curry Stew
Tossed Salad
Steamed Rice
Cold Drink

**Happy
Thanksgiving!**



November 1990

Sunday	Monday	Tuesday	Wednesday	Thursday	Friday	Saturday
				1	2	3
4	5	6	7	8	9	10
VETERANS DAY  11	12	9:00 Introduction to MacWrite / MacPaint  13	14	NAIA WOMEN'S VOLLYBALL #1 TOURNAMENT 15	NAIA WOMEN'S VOLLYBALL #1 TOURNAMENT 16	NAIA WOMEN'S VOLLYBALL #1 TOURNAMENT 17
18	19	9:00 Introduction to WordPerfect  20	Pay Day!  21	Thanksgiving PCC Closed  22	23	24
25	Hawaii Film Festival  26	9:00 WordPerfect Outline / Macros  27	28	9:00 WordPerfect Columns / Graphics  29	30	

**This is the time of
Thanksgiving!**
Give thanks, give blood.

Patients in Hawaii need more than 200 pints of blood a day, and there's only one source: caring blood donors.

BYU students, PCC workers and others in the community can become active participants in Hawaii's volunteer blood program at our upcoming blood drive. BYU-Hawaii is hosting a blood drive:

Monday, November 26, 1990

10:00 a.m to 3:00 p.m.

and

Tuesday, November 27, 1990

9:00 a.m. to 2:00 p.m.

Location: Aloha Center Ballroom

Sign up for th PCC/BYU-Hawaii/Blood Bank of Hawaii blood drive by calling:

293-3552 or 293-3185

The basic requirements to become a blood donor are easy to meet. All healthy adults 18 years or older (17 year olds can donate with signed parental consent) who weigh at least 110 pounds qualify to give blood.

The actual blood donation takes only about 5 to 8 minutes, with everything from registration to

Employee Christmas Party Announcement!

Mark the night of
December 15, 1990
on your calendar!

Enjoy a
Prime Rib Dinner
followed by a concert featuring
Melveen Leed

having refreshments in the canteen taking about an hour. The procedure includes a mini-physical to check blood pressure, temperature, and blood iron count. All equipment is new, sterile and disposed of after one use. A member of the Blood Bank professional staff is always available to answer any questions donors may have.