



December 4, 1981

update 81

Polynesian Cultural Center

Innovative Cultural Day

The Tongan Art students who are Center employees are excited about tomorrow's Cultural Day. The reason -- They are intimately involved with a project never before offered as a Cultural Day Activity.

Under the direction of Leakona Malolo, the students are preparing an exhibit of their work which reflects the Arts of Tonga in both past and present-day forms. It includes paintings, drawings, silk-screen prints, pen and ink renderings, tapa cloths, weavings, as well as artifacts and food.

The items on exhibit can be purchased from the artists who include: Leakona Malolo; Viliami Toluta'u; Semisi Malungahu; Sione Langi; Moana 'Ofahingaue; and 'Asilusi

Vailea. The exhibit will be presented in the Tongan Village today and tomorrow.

These students are to be commended for their creativity and innovation. It is good to see employees making a contribution of their talents to the Center programs. Visitor response to art within the Center has always been enthusiastic, so we wish the Tongan students well as they display their cultural heritage in the media of today.

If you are looking for a special Christmas gift for someone, -- one that is hand-crafted and original and reflects Polynesia today, why don't you help a student by choosing something from the wide variety of work offered in this exhibit.



Photo by Earl Millham

Austrian TV Personality Returns

By Mike Foley



Dela Varre brought one of the first telephoto lenses to the islands in the early 1920's to film surfing.

That white-haired gentleman who was recently seen filming around the Center for several weeks was not Col. Sanders, though there was some resemblance. The man in question was Andre Dela Varre, star of his own show on Austrian National Television (ORF) which is seen by about 3 million viewers in Central Europe.

The 79-year-old Dela Varre produces a program called "Neues von Gestern" -- "News from Yesterday" -- in which he returns to some of the places he's visited in his long career as a cinematographer and travel film maker, comparing the way things were by sharing some of his great old photos and film clips, and then bringing his viewers up to date.

That's where Laie comes into the picture. Dela Varre first came to Hawaii in 1919. His photographic talents brought him into contact with the director emeritus of the Bishop Museum, William Tufts Brigham, who introduced him to all the prominent kamaaina families of the day. The fashionable young people of these families often came to Laie and the surrounding areas for their outings.

"Mostly we'd swim and fish and climb," Dela Varre recalls. "And at night we'd swipe watermelons from the Chinaman's patch in Laie." (A practice some of the old-timers around the Center say they still remember.) Dela Varre was quick to point out his host later paid for those "forbidden fruits."

Continued on page 4

CENTER NEWS

Happy Birthday

Lily Kama	4
Sally Ah Quin	4
Maurice Soliai	4
Sani-dee Kekauoha	4
Ana Vaka	4
Kenneth Kaio	4
Kekemete Fitisemanu	5
Harold Palimoo	5
Nobuo Tsuda	5
Balram Mudaliar	6
Pasepa Brekterfield	6
Ropeti Lesa	6
Fua Faumuina	6
Robert Guest	8
Helmer Mauga	8
Terry Panee	8
Scott Bradshaw	9
Cindy Davis	9
Olivia Kavapalu	9
Paula Taosoga	9
Ezekial Kamai	9
Tauvale Solipo	10
Maria Wong	10
Kirsit Kapolulu	10



Christmas Quiz



Answers on back page

1. What are the names of Santa's 9 reindeer?
2. Is Santa Claus married?
3. Who was the Original Santa?
4. How many wise men traveled to see Christ? What are their names?
5. What city was Christ born in?
6. Who are the parents of Christ?
7. Write the complete 1st line of "Hark! The Herald Angels Sing"
8. Who wrote the "Messiah"?
9. What nation does the Christmas tree custom come from?
10. Who was the star of the TV program "Christmas in Hawaii"?



Only 22 Shopping Days

Get your Christmas presents now! Shop Polynesia is having a special pre-Christmas discount sale for all employees. Sale starts immediately and will extend through Christmas.

Please be aware that the 40% discount is a privilege extended to PCC employees only. It is not to be extended to friends, tourists, and non PCC employees. Only your immediate family (your children, your spouse, and your parents) may use the discount and then ONLY when accompanied by you. No exceptions.

Save for Christmas

Are you having trouble finding enough money for your Christmas presents? Do something about it! Start saving now for next years' Christmas by putting away Christmas Savings at State Savings.

You can arrange to have any amount up to \$40.00 per pay period deducted and deposited in your savings. 26 (or more if you start now) pay check deductions could really add up to a great Christmas for you and your family. For more information about Christmas Savings call the Personnel Department.

☆ Volleyball ☆ Schedule

The women have done it again! PCC volleyball women have claimed victory over the Budget Rent-A-Car team last Tuesday night.

This week the women's team will be playing Hui o maunakea on Thursday, December 3 at 6:30 p.m. and the men will be playing Coral Kingdom that evening at 7:30 p.m.

NEWS

Waikiki Staff "Teases" Tourists

Every Tuesday, Thursday, and Saturday morning, the girls behind the counter at the Cultural Center's ticket office in Waikiki leave their posts, go into the back room, and change into Tahitian, Samoan, or Maori costumes.

They're not just showing their ethnic pride, either. Promptly at 10:00 am they put on a 15 to 20 minute program for the hundreds of visitors who are usually strolling by and through the Royal Hawaiian Shopping Center at that time.

the program, which the ticket office staff has been doing for the past six weeks, is meant to be a "teaser" or preview of the things these visitors can see at the Center...and also gives the marketing department the chance to tell some people about our unique attraction.

So far the response to the promotion has been very good, thanks in particular to the talented ticket office staff. Tagi Faumuina, her sister Fua Faumuina, and Reiko Pokipala do a beautiful trio -- and also double as dancers. Loretta Nonotunu and Masi Faumui were brought in especially to help with the program, singing and dancing. And Nani Fukino handles the emcee assignment, though sometimes sales account executives Haili Pokipala or Billy Davis pitch in to help.

After the presentation, members of the group pose for pictures with the visitors while the others begin a flower demonstration, showing the crowds which ear to wear the flower behind and how to make headbands and wristlets. The whole program is repeated again at 11:00 am for the next hour.

Cultural Center villagers had previously been doing the dancing and demonstrations in Waikiki since the ticket office opened in June. The Waikiki staff took over these duties on Oct 17 after the dust had settled in the ticket office and the sales and marketing department had moved into their new offices on the third floor of the Royal Hawaiian Shopping Center.



Sales and Marketing Department promo team performs every Tuesday, Thursday and Saturday at the Royal Hawaiian Shopping Center.

Introducing:

Elder L. Tom Perry



L. Tom Perry, a member of the Council of the Twelve Apostles of The Church of Jesus Christ of Latter-day Saints, was called to his present Church position April 6, 1974 after serving as an Assistant to the Twelve since October 8, 1972.

Elder Perry's Church service began with a mission to the Northern States in 1942, after which he served for two years with the U.S. Marines in the Pacific. Subsequent Church positions include member of a bishopric in

Lewiston, Idaho, counselor in a stake presidency in Sacramento, California, a member of the New York Stake High Council, and president of the Boston Stake.

The Church leader was appointed by President Gerald R. Ford to serve on the American Revolution Bicentennial Administration Advisory Council. He also served as chairman of the Church Bicentennial Committee.

Elder Perry is a native of Logan, Utah, where he was born August 5, 1922. He received his B.S. Degree in Finance at Utah State University in 1949 and did graduate work there the following year. His professional career was spent in the retail business and at the time of his call as a General Authority, he was the treasurer for R. H. Stearns Company, which operates six department stores in the Boston area.

Elder Perry was married in the Logan Temple on July 18, 1947 to the former Virginia Lee of Hyde Park, Utah. They are the parents of two daughters and a son. **Mrs. Perry** died December 14, 1974.

Elder Perry married the former Barbara Dayton on April 28, 1976 in the Salt Lake Temple.

Assistant Chief Is TV Teacher



Photo by Earl Millham

Pu'a Letoa in traditional Samoan Chief's clothing.

There is probably a higher concentration of Pacific cultural specialists here at the Center than anywhere in the world. One such specialist is Pu'a Letoa, assistant chief of the Samoan Village.

Pu'a has recently been teaching the Samoan culture and language on public television, Channel 11. The show airs every Tuesday night from 10:00 - 10:30 p.m.

The purpose of the program is to teach the importance of the Samoan culture to the people of Samoa who are living in Hawaii and how they can better relate their culture to the Hawaiian way of living.

Pu'a feels that, "... if the Samoan people follow the matai system it can help reduce the crime and negative things that may happen among the youth of Samoa in Hawaii. Most importantly," says Letoa, "I don't want to lose my culture because it is an important part of my life and a gift from Father in Heaven to enjoy in this life."

Pu'a is well versed in the Samoan languages, customs, crafts and culture as well as being holder of two chief titles, 'Pouli' and 'Paepae' both received before 24 years of age.

Page 4

Dela Varre Still Shooting

Continued from page 1

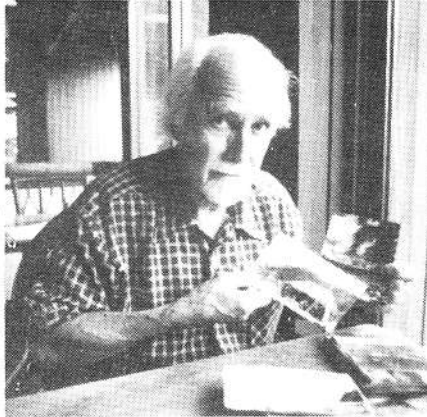


Photo by Mike Foley

While in the area, Dela Varre took some very interesting photos including shots of the just-dedicated Hawaii Temple. Other pictures in his collection show young swim-and-surf great Duke Kahanamoku. In fact, Dela Varre's surf shots were among the earliest of their kind.

The lively filmmaker recently became interested again in the Laie area through a contact in the Church's public communications department in New York who showed him the Center's "Aloha Experiment" film. That's all it took!

Dela Varre, his wife, and an Austrian TV producer came to Oahu for two weeks to do one of his update shows. He ended up spending almost the whole time in Laie, and said his program -- which is tentatively scheduled to be broadcast in late January 1982 -- will focus entirely on the Polynesian Cultural Center and Laie.

"I was really impressed, and so glad I could come again," Dela Varre said.

Lost

The Maori Village has lost three reels of Air New Zealand feature films that are used in the village to inform tourists about the country of New Zealand. If anyone is aware of the location of these films, please inform Chief Cleo Smith as soon as possible.

Oranges Anyone?

What would you do with over 700 oranges? Play croquet on the May-day area? Squeeze 350 fresh glasses of breakfast juice? Or maybe make over 700 kids a little happier at Christmas?

For the second year running, the Center is making a donation of oranges to Laie Elementary School as part of the children's Christmas treat. That means over 700 oranges for the kindergarten to sixth grade students, many of whom are children of Center employees.

Laie PTA Committee members chose oranges over apples because the latter bruise easily and are more costly at this time of year. The fruit is ordered by the purchasing department who deliver it fresh to the school for distribution among the classes.

Now, next time you have 700 of something you don't know what to do with, why not consider donating them to the schoolchildren of Laie? It is a good way to practice the Christmas Spirit and spread smiles on 700 faces!

Congratulations!

To Reservations Office employee Maelani Hammond. She will be married Saturday, December 19 to Robert Orlando Valentine.

To Richard and Claudine Peters on the birth of their baby boy this week.

To Merenia and Dudley Kekaula on the birth of their baby boy last week.

To Alex Lobendahn of the Fijian Village who is marrying Natalie Edmonds on December 26th.

To Valerie Cravens who has been chosen Most Valuable Player for the BYU-Provo Womens Basketball Team.

The Visitors Write Letters

How are you? Do you still remember us, the students from China Travel Service of the People's Republic of China. We should thank you very much for the wonderful opportunity you provided for us to see the well-known Polynesian Cultural Center.

We are all very glad to have been exposed to so unique an environment that we seemed to be in a real paradise. The villages, the huts and the local natives, which feature the different cultures of the island countries on the South-Pacific, made us feel we were on those island rather than on Oahu. The night show with beautiful Hula dance and fire dance gave us such a deep impression that we will keep it for a long time. However, the country folks, they are so beautiful and characteristic, and have good sense of humor that we believe they are the best attraction among all.

Though today's tourists are living in the modern society, they like to experience the primitive society and learn about others' culture. It's a very good idea to have a tourist attraction like the PCC and in which we can see it have been run so successfully. We are thinking about one day in China, we should also have a tourist attraction like this, since ours is a nation of more than 55 ethnic groups.

It is a wonderful trip, an unique experience. We shall again, present our sincere thanks to you, and wish you an ever success in your business.

Yours Truly,
Tu Wen Chin
Li Honger
Tang Yi Yi
Chang Guo Ming
Xu Zhong Ping

Expressing gratitude for the opportunity to contribute to the symposium, Vernice notes that the cooperation between the Women's Conference planners and the symposium personnel will allow the thousands of women who attend the conference to view the exhibit "Perhaps we can spread a little aloha over the snow as we share our culture in this way!"

Aloha oe Loni!

Loni Manning, the "roving reporter" half of the Update staff is leaving PCC for graduate school in Provo. Expert in all phases of journalism and newspaper work, including darkroom and photography, Loni has been instrumental in upgrading the Update to its present, newsy form.

A graduate in University Studies, she previously worked in the Church Office Building in Salt Lake City on the Church Education staff. She has also worked on the Colorado Daily News staff and with PCC Graphics, and Pacific Graphics. In addition, this past summer she was the temporary editor of the BYUHC Alumni newspaper.

Loni has enjoyed Hawaii and her Center experience so much that she leaves with mixed feelings. She is anxious to continue her education, but is impressed with the people of the islands and the spirit of Polynesia that she has discovered here.

"I realize that I have long taken my own culture for granted," she observes, "now I am curious to find out what my American and European culture really is." As a student in the Polynesian Crafts class, Loni learned that everyday woven objects looked simply made but were actually complex. The experience gave her a great appreciation for the artifacts of Polynesia.

"I have also learned" she comments with a smile, "that people are more important than time!" Asked if she plans on returning sometime in the future, she is definite in her reply: "I'll definitely be back!"

Mana: The Spirit of a People

A new exhibit of candid photographs shot entirely in the Center and featuring PCC personnel will be part of a symposium on Mormon writing to be held on the BYU Provo Campus, and will be exhibited through the month of February 1982.

The symposium is co-sponsored by the Association for Mormon Letters and the Center for the Study of Christian Values in Literature, and is included in the program offered participants in the university's Seventh Annual Women's Conference.

Titled **Mana: The Spirit of a People**, the exhibit is the work of Vernice Pere, Internal Public Relations manager, and is part of a presentation commissioned of her by the symposium planners. The exhibit will also include Pacific poetry and

Vernice hopes that the combination of photographs and poems will convey the spirit of Polynesia and reflect PCC's contribution to Pacific as well as Church culture and the arts.

Vernice will join Dr. Marilyn Arnold to present an overview and analysis of Mormon literature in the Pacific and to read from her own work. She observes: "I am greatly encouraged by the response of the symposium committee to both the writing and the photography that make up this exhibit." As she looked through hundreds of photographs she had shot in the Center, Vernice chose those that best served the concept of the spirit of Polynesia.

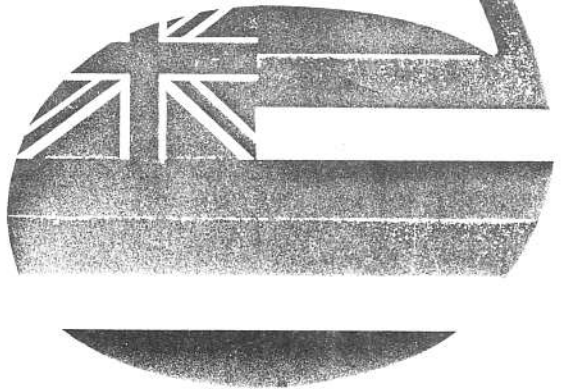
Explaining how the choices were made, she comments: "The mana of our people is evident in the eyes and faces and gestures captured by the camera, and is clearly evident in the dignity and grace of Center personnel as well as the carvings, architecture, and artifacts which are included in the photographs."

"CHRISTMAS IN LAIE"
with the Laie Choral Union
Dr. James A. Smith, chorus master
Saturday December 5, 1981
8:00pm

CANNON ACTIVITIES CENTER
\$2.00 Bleacher seats \$4.00 Folding seats
\$5.00 Reserved seats
ticket information 293-3759 or 3660

Honolulu Symphony

Donald Johanos - Music Director



Brigham Young University
Hawaii Campus



Johanos with choir members at rehearsal. Many choir members are PCC employees

Photo by Earl Millham

☆ Stars of Tomorrow



Photo by Loni Manning

The children of Laie may be the 'stars of tomorrow' especially with the performing experience some 60 of them are getting in the Creative Children's Workshop directed by Bobby Chambers and PCC employee Esther Arp.

These children from ages 4 to 14 come ready to work three times weekly after their busy days at school. Director Chambers feels that, "... these children are an asset to the community and people should be aware of the great talent that has gone unnoticed."

The group of singers and dancers will be performing 3 shows this month:

December 11th

7:30 p.m. - Laie Stake Center

December 19th December 23rd

Honolulu Laie 2nd Ward

The theme of their performance will be "A Salute to America", and will be highlighted by Broadway tunes, an American medley and a family oriented show. They will also be performing Christmas music for the Holiday season

The directors would like to express their appreciation to the university, community and the Cultural Center for their great support and help in technical advice and encouragement of these young performers.

Flags Fly For Football Feast

If you watched the Thanksgiving Day TV football games you may have missed the most important game of all, the "Turkey Bowl" -- annual flag football tournament for the Cultural Orientation Department. The neck-in-neck competition between the canoe section and the guides is in its 3rd year running with the canoe section coming out champion for the second year in a row.

What started as a Thanksgiving Day football game, however, has turned into a Holiday extravaganza party for orientation employees and friends, most of whom are students who cannot be home for the holidays

After the early morning football and softball games there was volleyball in the parking lot, roller skating in the tram building, and a treasure hunt (the bike and innertube races

were rained out).

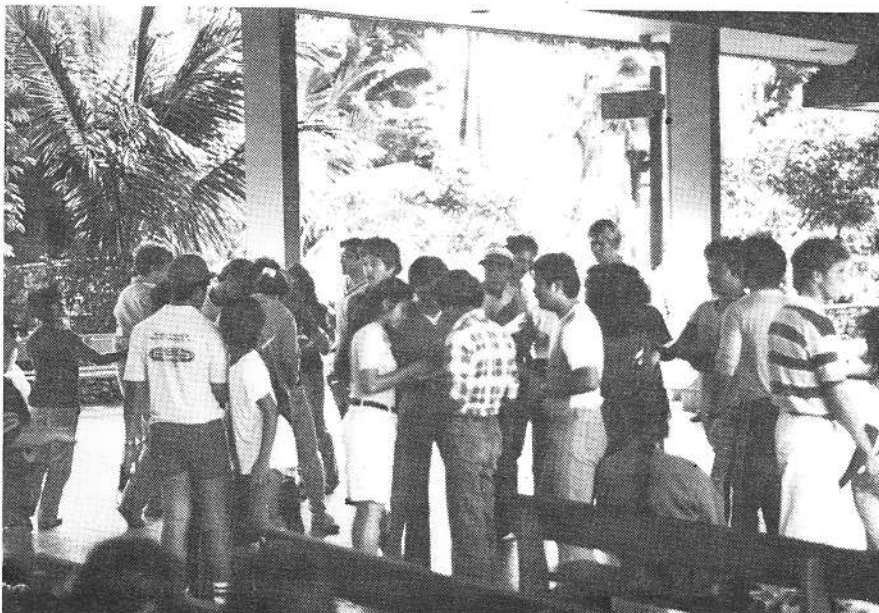
No holiday party is complete without a feast of goodies and this party was no exception. After all of that ball playing everyone was more than ready for the turkey, ham, curry, palusami fruit, pork, sushi, etc., donated by the department for the hungry workers. Employees supplemented the dinner with their own cakes, salads and rice, and of course pumpkin pie. According to Neil Rose, "Jimmy Kaanaana (husband of Dept. head Haunani) makes the best pumpkin pies in the world!"



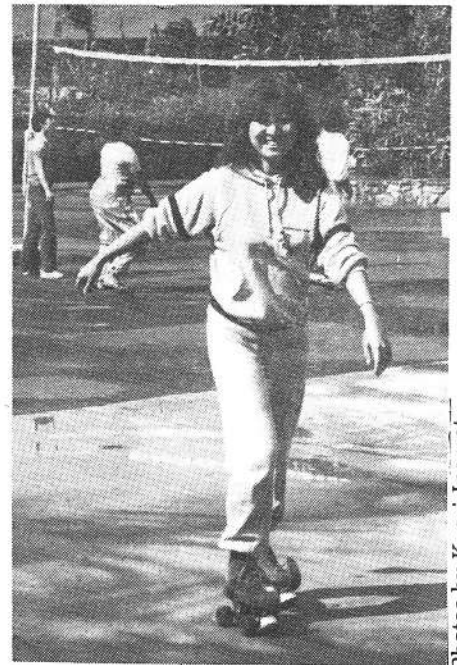
Nap time after a big feast.



Guides enjoy food at holiday party.



Orientation employees show just how close their department is.



New Japanese guide Kaori Inamoto practicing for Roller Derby.

Photos by Kaori Inamoto

EDITORIAL

viewpoint vernicepere

A large number of Center employees were in the choir that gathered this week in the campus ballroom awaiting the arrival of Maestro Donald Johanos of the Honolulu Symphony for their very first rehearsal with the conductor.

He walked in unaccompanied precisely 8.00 pm, removed his jacket, picked up his baton, and began work immediately. Three hours later he picked up his jacket and left, and the choir had no doubt about the fact that they had just met a master craftsman.

Knowledgeable, gracious, and most professional, the masetro demanded the very best the choir had to give. Over and over he drilled sections through key passages, calling out instructions of "Fortissimo!" or "Poco Animato!" as he worked, and more than once he cried "Wait for me!"

That latter plea proved to be the most important lesson of the rehearsal. "I must have control" he would repeat many times, as the choir, caught in the spirit of the music, galloped ahead of both piano and baton.

By the time he stepped off the podium, the choir had learned the importance of control to a quality performance. The experience of working under such a professional had been exhilarating and rewarding, and every individual knew they had learned something that had significance beyond the preparation of a Christmas Concert.

For me the evening prompted thought on the idea of control. Individually, we recognize that it is a basic human need to be in control of our own lives -- to move to our own rhythm rather than always to the rhythm of others. When we are secure in that right, we will willingly submit to others' direction.

Obviously, a choir cannot perform with excellence if every member decides to do his own thing any more than a football, surgical, mountain-climbing, or construction team can. It is just as important, however, for the conductor to know where he is going and how best to get there in order to lead in a manner that avoids confusing his team.

Such teamwork requires trust and confidence in the ability of everyone to do his job well. Leader, follower, maestro, or soprano, the shared experience can be one of life's rewarding events, whatever our role.

BYU-HC Calendar

Friday, December 4th

Aloha Oi Dance
Ballroom, 9:30 p.m.

Saturday, December 5th

Basketball
Cannon Center, 7:30 p.m.
Movie
Auditorium, 6:30 & 9:30 p.m.

Monday, December 7th

Christmas Tree Lane
Christmas Tree Decorating Contest
Aloha Center Mall

Tuesday, December 8th

Basketball
Cannon Center, 7:30 p.m.

Wednesday, December 9th

Showcase Performance
Auditorium, 10:30 a.m.
Film Classic
Auditorium, 6:30 & 9:30 p.m.

answers

1. Dancer, Prancer, Donner, Blitzen, Dasher, Vixen, Comet, Cupid, Rudolph
2. Yes, to Mrs. Santa Claus.
3. St. Nicholas of Holland who used to give gifts of food to needy children.
4. Three. Casper, Melchior, Balthazar
5. Bethlehem
6. God the Father and Mary.
7. Hark the herald angels sing, Glory to the new born king.
8. George Frederick Handel
9. Germany
10. Jim Nabors