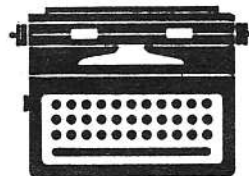




POLYNESIAN CULTURAL CENTER

UPDATE



Employee Newsletter

Friday, December 20, 1985



Merry Christmas

Christmas 1985

Together with modern day Christians we celebrate December 25th as the traditional day of our Lord's mortal birth. With the rest of the Christian world we celebrate this season with special gifts and greetings.

As Latter-day Saints, we know that Christ was actually born on the day corresponding to April 6th, (D. & C. 20:1) but we nevertheless join in the wholesome portions of the Christmas celebration.

Christmas is to us a perfect opportunity to renew our search for the true Spirit of Christ and to center our attention on the true doctrines of his birth:

1. From his mortal mother, Mary, he inherited mortality and the power to die wherein paid the price for our sins and provided us the means to change from mortal beings to immortal Gods, and
2. From his Holy Father he inherited the power to live, or the power which enabled him to work out the infinite and eternal atonement.

We speak of the Christmas spirit—a time when we all turn a "little nicer" than during the rest of the year. If we are a little nicer at this time of the year then shouldn't we call this the "Christ-like spirit" rather than the "Christmas spirit." As Latter-day Saints we should all strive each and every day to become more like the babe of Bethlehem and let our lives change and improve just as he did for he received not of the fulness at first, but went from grace to grace until, in the final triumph of the resurrection, he gained the fulness of all things.

At Christmas, Sister Rodgers and I pause to reflect upon life and those around us — family, friends, fellow employees, and a Father in Heaven who has freely given all that makes our existence worthwhile. We often wish that we could be the type of person we are at Christmas all year long — just as we wish those around us could do the same. Some do much better than others. There are those we see each day who always have a smile on their face, a kind thought in their hearts, and uplifting words on their lips. Conversely, there are those who are constantly complaining, groaning, and wondering "what's in it for me." Just as there are those who seem to be most happy when they are making themselves and others around them most miserable, so also there are those who know the true meaning of the "Christ-spirit" of Christmas and keep it all year long.

We are always impressed with the stories of Christmas which, though they do not come from the scriptures, express gospel truths in the messages they teach. The story of SCROOGE is one of repentance and change. THE GIFT OF THE MAGI teaches total unselfishness in a selfish world, and the writings of Henry Van Dyke perfectly portray the advantages of a Christ-like life:

Are you willing to forget what you have done for other people, and to remember what other people have done for you; to ignore what the world owes you, and to think what you owe to the world; to put your rights in the background, and your duties in the middle distance, and your fellowmen are just as real as you are; and try to look behind their faces to their hearts, hungry for joy; to know that probably the only good reason for your existence is not what you are going to get out of life, but what you are going to give to life; to close your book of complaints against the management of the universe, and look around you for a place where you can sow a few seeds of happiness—are you willing to do these things even for a day? Then you can keep Christmas.

Are you willing to stoop down and consider the needs and the desires of little children; to remember the weakness and loneliness of people who are growing old; to stop asking how much your friends love you, and ask yourself whether you love them enough; to bear in mind the things that other people have to bear on their hearts; to try to understand what those who live in the same house with you really want, without waiting for them to tell you; to trim your lamp so that it will give more light and less smoke, and to carry it in front so that your shadow will fall behind you; to make a grave for your ugly thoughts and a garden for your kindly feelings, with the gate open — are you willing to do these things even for a day? Then you can keep Christmas.

Are you willing to believe that love is the strongest thing in the world — stronger than hate, stronger than evil, stronger than death — and that the blessed life which began in Bethlehem nineteen hundred years ago is the image and brightness of the Eternal Love? Then you can keep Christmas.

And if you keep it for a day, why not always?

But you can never keep it alone.

— Henry Van Dyke

May we all strive more fully throughout the coming year and years yet to come to be more like him whose name we profess. May we put more "Christ-spirit" into our Christmas season. May we come to portray to ourselves and others around us the truth which we now testify to you - that He lives! He was born of Mary and our Immortal Father in Heaven. He lived that we too may live. May our lives reflect our testimonies as well as our devotion we humbly pray at this Christmas time.

God bless us, everyone!

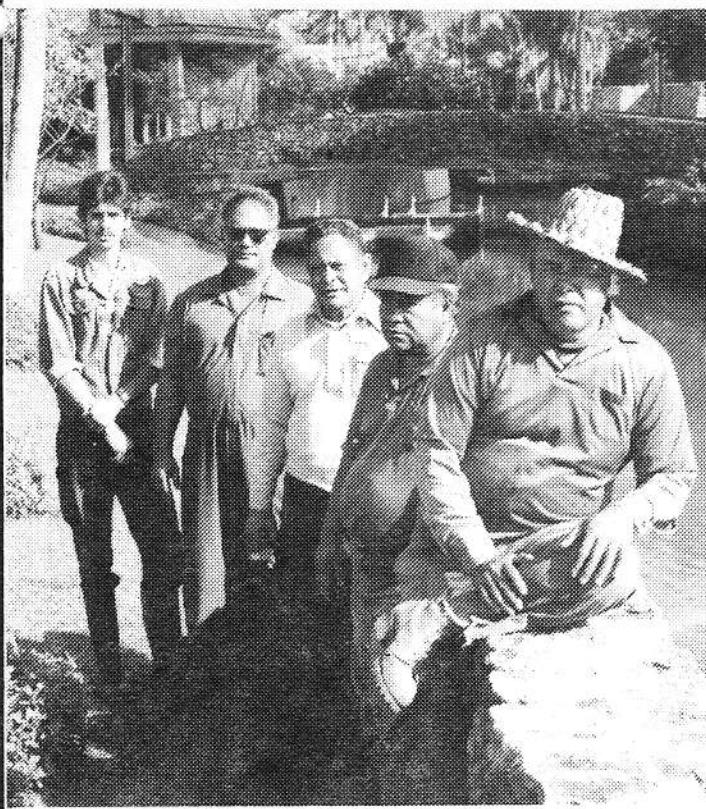
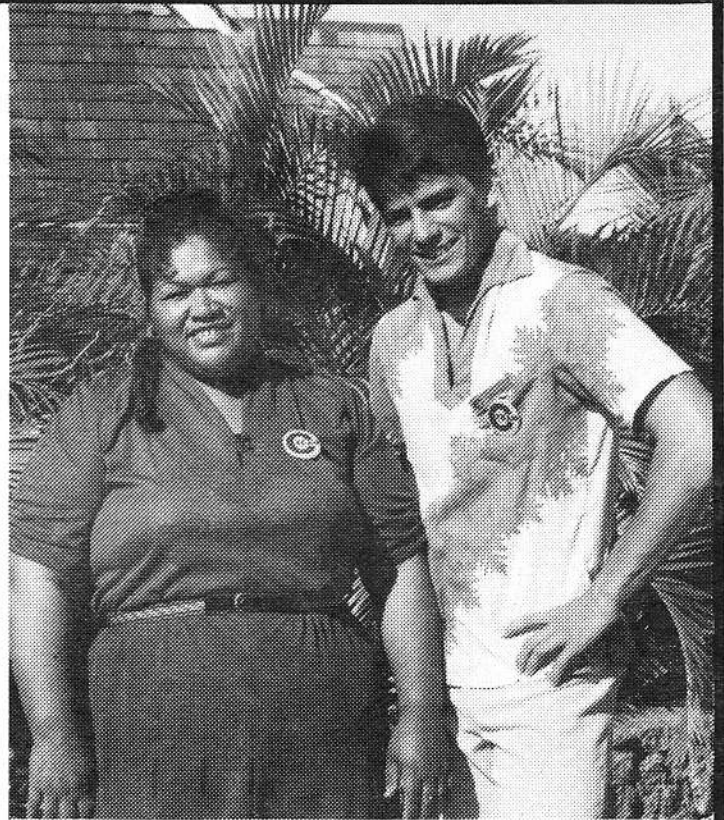
Ralph and Joan Rodgers.

From the
**Employee Relations
Department...**

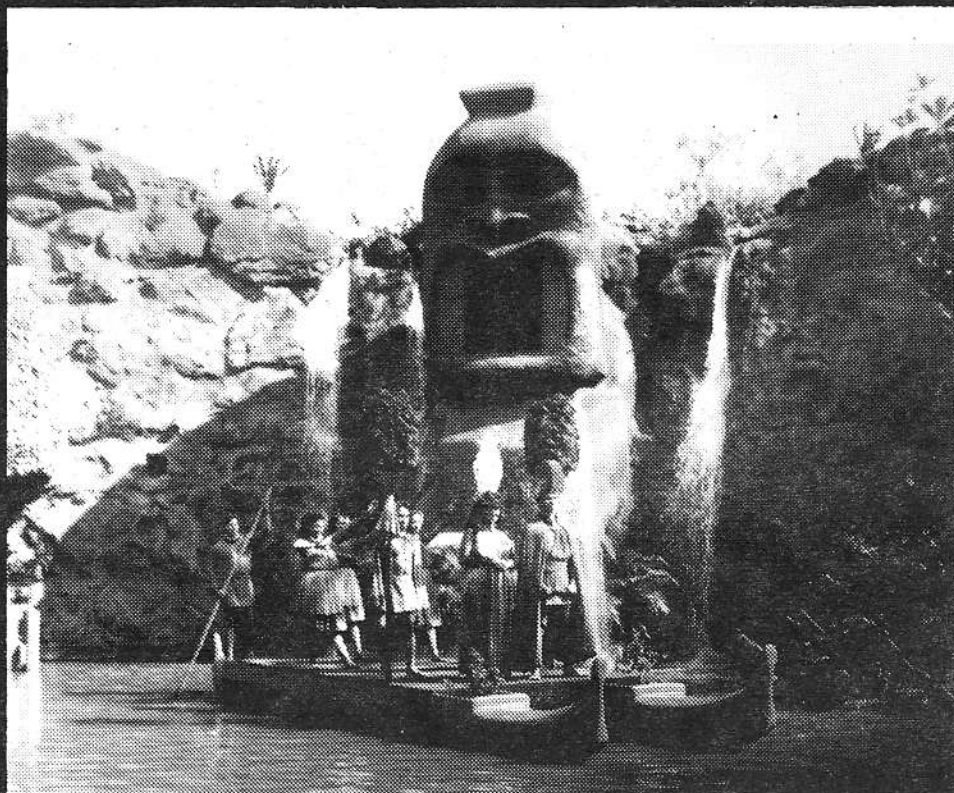
Attention

**Our very own
Thursday Nite Spectacular
will be held
January 2, 1986
at 9:30 p.m.
in the Pacific Pavillion at PCC**

**Come and enjoy a great even-
ing of talent, fun, and
excitement!!!**



This week the Employee Relations Department honored its C-Team winners for the month of November. They are pictured here and are as follows: (top right) March Malaerule - Support Services, Joe Pilimai - Concessions, (above right) Sundance Leung - Deelights, Meisui Chuang - Theater Concessions, Daniel Wong - Concessions, (above left) Etuale Ilallo - Nursery, Enesi Tauillili - Nursery, Tuavale Solipo - Auto Shop, Telefoni Aumua - Fleet Services, Mark Cortez - Fleet Services, (not pictured) Kelly Payne - Concessions, Ting Pineda - Concessions. Congratulations to these employees for their hard work. Be sure and get your nominations in for the next C-Team awards!!



(above) This week the Hale Aloha came one step nearer its January opening. Shown here is the Hawaiian royalty canoe in the newly remodeled theater. The afternoon canoe pageant in 1986 promises to be a tremendous addition to the Center. (below) President Ralph Rodgers during a particularly 'spiritual' experience. The photo was taken during a rehearsal for the musical production of *Scrooge* during a scene in which Scrooge encounters Marley's ghost. The production is being presented as a gift to the Laie community from the Polynesian Cultural Center and Brigham Young University—Hawaii Campus. The show runs Dec. 20th and 21st at the BYU—HC Auditorium and begins at 7:30pm. Contact Moana Crismon for tickets at 293—3038.



CALENDAR

Friday, December 20th

ASBYU Ice Skating

TVA Christmas Play

AUD 8pm Musical Play

"SCROOGE"

Ballroom Movie 9:30pm

"It's a Wonderful Life"

Sweet and sour spareribs, baked lasagna, steamed rice, garlic bread, buttered mixed vegetables, drink

Saturday 21st

AUD 8pm Musical Play

"SCROOGE"

BYU Stakes temple session 5:10am

TVA Christmas Play

Ballroom Movie, 7, 9:30pm

"It's a Wonderful Life"

Kalua pork, BBQ chicken, steamed rice, butter peas and carrots, drink

Monday 23rd

Baked meat loaf, Chicken stew, steamed rice, buttered corn, drink

Tuesday 24th

Christmas Eve

Roast chicken with gravy, teriyaki pork, steamed rice, coleslaw, drink

Wednesday 25th

Christmas Day!!!

Merry Christmas Everyone

Aud. Movie 4:30, 10:00 "Scrooge"

7:00 "Oliver"

Thursday 26th

Club Night

Salisbury steak, chili franks, potato salad, dinner rolls, buttered mixed vegetables, drink

Friday 27th

Billm 9:30pm

Clubs talent show and dance

Movie, 9:30pm AUD

"My Science Project"

Deep fried chicken, beef stew, steamed rice, tossed salad with 1000 island dressing, drink

The UPDATE is an employee newspaper of the Polynesian Cultural Center and is issued as a training tool of the administration of the Center. The UPDATE staff consists of:

UPDATE Supervisor David Rodgers

UPDATE Assistant Kerry Kingi

The UPDATE is printed by Iava Posala of the PCC Graphics Department.

Submissions to the UPDATE should be received by Mon. at noon to be included in that week's issue. The UPDATE office is located in the Graphics office, ext. 3116 or Call Darlene Asuega at ext. 3005.