



Polynesian Cultural Center Employee Newsletter Friday, February 1, 1985

# UPDATE '85



\*\*\*\*\***The M-Team 1985**\*\*\*\*\*

## Spotlight On...

### Delsa Moe

Delsa Moe is excited about her new position in the Theater Department. She will work with Bryan Bowles whom she says is not only a fun person to work with, but professional and expert at what he does.

Working in the Night Show, Matinee, Canoe Pageant and Brass Band has helped Delsa in becoming familiar with the different instructors and supervisors of these areas. In her own words, "The Theater is an easy job for me because the department runs itself. The supervisors are so good at their jobs that everything flows smoothly."

One of the first members of the Brass Band when it was officially made a department, Delsa used to be part of the half-hour concert which was held in front of what is now the Special Projects office. She recalls that sometimes there were only nine people in the Band and they really struggled. Today she notes, the Band has recruited many talented musicians and can choose the very best.



*Delsa Moe Theater Manager*



*Come on you guys, keep in step...*



## LADIES & GENTLEMEN...

The Update welcomes articles and letters which praise or encourage others, as well as photographs and artwork done by employees which you would like to see published in the newsletter. All materials must be submitted by Tuesday at 5pm to the Graphics Dept., to meet our deadline. If you have questions, call Dave or Jared at ext. 3116.

### A WORD ON EXCELLENCE

Dear Update:

The recent airing of "In Search of Excellence" has reinforced a number of qualities and skills that with application we could all benefit both personally and as an organization.

Among the many qualities and characteristics of success that set the excellent companies apart from the rest, is their ability to get everybody involved in a common mission and purpose. This identification of mutual goals and involvement are the key to taking pride in ones work--the result, quality. Involvement is prompted through managers effectively informing employees and allowing them the opportunity to speak out.

It is therefore encouraging to see that the Editor and staff of the UPDATE have begun an editorial section as another means for employee involvement and mutual awareness. Idealistically, this will be another channel for expressing praise, suggestions, problem awareness with possible solutions, or simply asking questions. As we effectively utilize this opportunity for better communication and mutual success, we can more actively involve ourselves in ensuring another even more dynamically "excellent" year, for all of us.

Sincerely,

Ron Walk

*We appreciate your praise Ron, and we especially appreciate your contribution which we hope is the first letter of many.*



*The Update welcomes these new employees: Mike Linnell, Dan Conklin, Toby Bohnet, Jon Naeole, Jodie Owen, Teva Cowan, Sara Ata'ata, Shirley Wohler, and James Tollefsen.*



**CULTURAL CORNER**  
from the Institute for Polynesian Studies

### Honesty in Polynesia

Throughout traditional Polynesia occurred different standards of honesty. The Niueans had two—one which controlled their relations with members of their own family, and the other regulated their dealings with "outsiders" including members of their own race. Stealing among members of a family was unthinkable; however, to take goods of "outsiders" was considered praiseworthy. (Edwin M. Loeb: *History & Traditions of Niue*.)

Herman Melville in his book *Typee* recognized a double standard practised by the Polynesians by writing:

"The strict honesty which the inhabitants of nearly all the Polynesian Islands manifest towards each other, is in striking contrast with the thieving propensities some of them evince in

their intercourse with foreigners. It would almost seem that, according to their peculiar code of moral, the pilfering of a hatchet or a wrought nail from a European is looked upon as a praiseworthy action. Or rather, it may be presumed, that bearing in mind the wholesale forays made upon them by their nautical visitors, they consider the property of the latter as a fair object of reprisal."

The standards of honesty practised in Samoa revolved around the system of a common interest in each other's property. Each person was at liberty to beg, borrow, and take from one another for each considered that what belonged to one belonged to all. Consequently one did not steal; one merely used or ate what one was entitled to.

(George Turner: *Samoa*)



*Eddie, one more wrong note we put Craig in first chair!*

## POLYNESIAN CULTURAL C



*Lets see... Is that an A sharp, or a B flat?...*



*Is this where I put my left hand?...*





*Somebody said there was a talent scout here today...*

## ENTER'S BRASS BAND!!



This week the Update honors the members of the Polynesian Cultural Center's wonderful Brass Band. The band originally started with just a few instruments while performing in the Matinee show. Through hard work and a desire to achieve excellence, the band has grown until it now is one of the most popular attractions at the Center.

The Band practices daily, working on many different types of music such as traditional folk songs, modern pop music, and even a little Tchaikovsky.

If you haven't had a chance to hear the band's Sunset Parade and concert, you are missing out on a real treat. Their professionalism and musicality are superb, and they present a very enjoyable show. We congratulate them for this and honor their hard work, enthusiasm, and commitment. Although they don't have 76 trombones or 110 cornets, you would never know it from their sound. Way to go PCC Brass Band.



*Sui'ai, You seen da movie down Laie?*

*Tehina, it's your turn to flip the page...*

## The EXTRA, EXTRA Mile Award

This week the Center was visited by an old friend - the Lt. Governor of American Samoa, Eni Hunkin. Eni was raised right here in Laie, attended Kahuku High School, and even served there as the student body president his senior year. He then enrolled at the Church College of Hawaii (now BYU-HC), and was hired at the newly opened Polynesian Cultural Center as a canoe guide. He worked with Haunani Kaanaana, Fia Mau, and several others who are still with us. In speaking of him, Haunani recalls, "He was always an excellent worker, and was very interested in making the customers enjoy the Center."

It was at the Center and CCH that Eni met Miss Hena Nui Cave. Miss Cave was a Tahitian guide who had come to Hawaii with her brother, Victor, to attend school. Eni introduced them to the Church and later baptized Hena before marrying her. They are still very active in the Church in Samoa, and Hena's brother Victor is currently serving as a Regional Representative.

In talking with Haunani about Eni, she explains, "Eni always used to say that it was his goal to return to Samoa and help his people, and you know, we hear that so often from students that sometimes we don't really take them seriously, but Eni meant it - and he did it. We are so proud of him."

After attending CCH for a few semesters, Eni transferred to BYU-



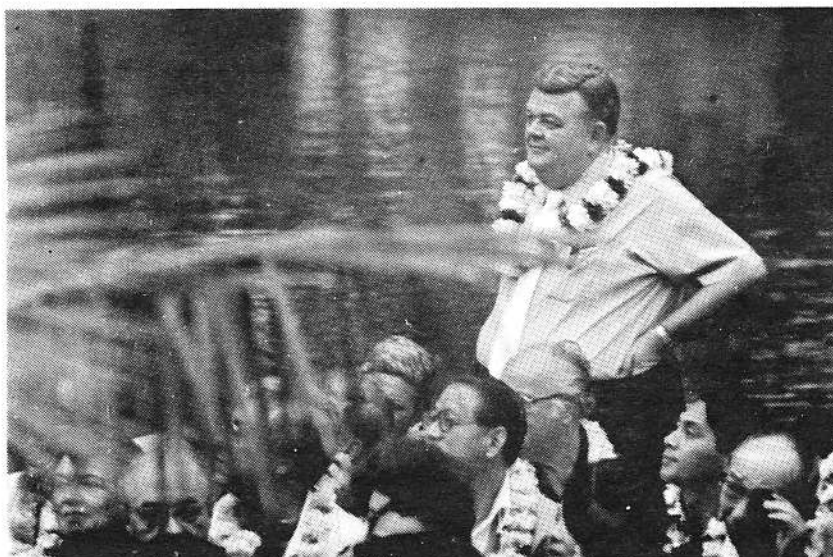
*Eni and Hena Hunkin anticipate the Tahitian Tamure*

Provo, where he graduated with a law degree. From there he moved to Washington D.C. and worked with the U.S. Government for 8 years. Eni was instrumental in getting several very important bills passed which directly benefited American Samoa. Eni worked for some firms with one foot in Samoa, and one in Washington, and after losing a race for a seat in the American Samoa Legislature, he decided it was time to fulfill his goal.

He packed his family up and moved to Samoa to concentrate his full energies there, and he was just recently elected to the office of Lieutenant Governor, an office second only to the Governor.

The Update joins with others who know Eni in saying that we are proud of him. He and his wife are examples of those who have truly "Returned to help his people."

Thursday, January 26th was a very important day for the PCC. We were visited by 26 of the top broadcasters from the United States and Japan. The visit was the culmination of a 2 day seminar in which these leaders discussed their common interests and challenges. The group was sponsored by Bonneville Production of Salt Lake City, UT, which is a Church owned Company. These media people were treated to a VIP tour which included a show in the Maori Villiage and a luau feast at the Tahitian Canoe Landing. These people were very impressed with the Center and appreciated the hospitality which they were shown. The Update commends those people involved for their fine work and for going the extra mile.



*General Manager Ralph Rodgers was tour guide for the day during the broadcasters visit*

# SURVEY

In the new year of 1985, we want to include in the Update items which you the reader would like to see. Please check any of the following items which you think should be included in future issues, and then feel free to write any comments that might improve the newsletter.

- ☐ Birthdays of employees
- ☐ Art and writing contests
- ☐ Employee surveys
- ☐ More reading material
- ☐ More photographs and artwork

## COMMENTS, NEW IDEAS...

---

---

---

---

---

---

---

---



Please turn in surveys at Graphics between 8:00a.m.- 5:00p.m. by Tues. February 5.

FEBRUARY

Food Service Employee Luncheon

\*\*\* Subject to change without prior notice

MONDAY	TUESDAY	WEDNESDAY	THURSDAY	FRIDAY	SATURDAY
				1 Hamburger Steak with tomato gravy Seasoned Corn Steamed Rice Cold Drink	2 Baked Chicken Thighs Natural Gravy Steamed Rice Hot Vegetables Cold Drink
4 Roast Pork w/gravy Brown Gravy Steamed Rice Hot Vegetables Cold Drink	5 Italian Spaghetti with meat sauce Garlic French Bread Steamed Rice Parmesan Cheese, Toss Salad	6 Baked Luncheon Meat Glazed Sauce Steamed Rice Buttered Mixed Vegetables Cold Drink	7 Chicken Curry Stew Steamed Rice Pineapple Chunks Cold Drink	8 Hawaiian Plate Deep Fried Mahi Tartar Sauce Toss Salad Steamed Rice & Drink	9 BBQ Pork Slices Natural Sauce Hot Rice Fried Cabbage Cold Drink
11 Roast Beef w/gravy Mashed Potatoes Steamed Rice Hot Vegetables Cold Drink	12 Chicken Chop Suey Steamed Rice Toss Salad with Thousand Is. Dressing Cold Drink	13 Salisbury Steak w/gravy Steamed Rice Seasoned Hot Vegetables Cold Drink	14 Pork w/cabbage Steamed Rice Buttered Mixed Vegetable Cold Drink	15 Deep Fried Chicken w/giblet gravy Mashed Potato-Rice Seasoned Corn Cold Drink	16 Chili w/franks Steamed Rice Buttered Peas Cold Drink
18 Pork Slices w/gravy Snowflake Potatoes Seasoned Hot Vegetables Steamed Rice Cold Drink	19 Curry Chicken w/white sauce Steamed Rice Steamed Hot Vegetables Cold Drink	20 Baked Lasagna Garlic Bread Steamed Rice Toss Salad w/dressing Cold Drink	21 Beef Stew Hot Biscuits Steamed Rice and drink Pineapple Chunks	22 Hawaiian Plate Baked Macaroni with ground beef Seasoned Corn & Drink	23 Chicken w/gravy Steamed Rice Buttered Peas and Carrots Cold Drink
25 Meat Loaf w/brown gravy Mashed Potatoes Steamed Rice Buttered Hot Vegetables Drink	26 Teriyaki Pork Fried Rice Buttered Mixed Vegetables Cold Drink	27 BBQ Chicken Steamed Rice Home Fried Potatoes Buttered Mixed Vegetables Drink	28 Pork Chop Suey Steamed Rice Buttered Corn Cold Drink		

for Wg



by David Rodgers

This month the cover of the UPDATE highlighted the new management team for 1985. Many of them are new to the areas which they have been assigned to cover, and almost all of us have a new boss. These new leaders have reminded us of the familiar recurring theme of change and the importance of change in our lives.

We all know that change is necessary for growth, but sometimes we find it painful to accept, much the same way a runner finds it painful to lengthen his or her stride in striving for newer heights. This principle of improvement is an eternal one, and the Lord uses it as the basis of his plan for Eternal Progression. A good example of this is to look at the Church today as compared with what Joseph Smith knew it to be. If Joseph returned to the earth in our day and examined the changes which the Church has gone through, he wouldn't even recognize it. He wouldn't recognize the temples as we know them, he wouldn't know what a ward is. He would have no idea what a Regional Representative or an Area Supervisor was, not to mention the Correlation Committee. He wouldn't know that he was supposed to attend priesthood meeting on Sunday morning, and his wife wouldn't attend Relief Society on Sunday morning either. Our sacrament service would be completely foreign to him except for the sacrament itself, and even that would be different because of the 12-year old deacons. These are just a few of the differences between what the Church started as, and what it is now. Does this mean the Church is wrong? No. It means that the Church is living, and that it is expanding and growing.

In this way I believe that the Cultural Center is also living. We are growing and changing in many of the same ways the Church has. We are larger and more organized, with many different parts and divisions. The Apostle Paul talked about the Church being a body and the different parts being individual and important. The Cultural Center is the same. We need to realize this concept more now than ever as we work at the PCC. It is vital that we accept and promote these changes and help each different part of this living organization to improve.

We must join together and pray for health for our living Cultural Center, and we must work for health through accepting change as a necessary part of improvement. I am very excited for the future, and I believe these changes will help 1985 be the Polynesian Cultural Center's best year ever.

## ATTENTION...

Two pieces of luggage from Seattle Tacoma Airport were delivered at P.C.C. Please come to Special Projects to claim.

## CALENDAR

*Band Week!*

### Friday, February 1

Hamburger Steak with tomato gravy, Seasoned Corn, Steamed Rice, Drink

*A pinch and a punch  
for the first of the month...*

### Saturday, February 2

Baked Chicken Thighs  
Natural Gravy, Steamed Rice, Hot Vegetables, Drink

### Monday, February 4

Roast Pork w/gravy  
Steamed Rice, Vegetables  
Drink

*Start the week off with a smile...*

### Tuesday, February 5

Italian Spaghetti with  
Meat Sauce, Garlic French  
Bread, Rice, Tossed Salad

*Bosses, treat your workers  
to an ice cream.*

### Wednesday, February 6

Baked Luncheon Meat,  
Glazed Sauce, Rice,  
Vegetables, Drink

*Phone a friend...  
just to say hello!*

### Thursday, February 7

Chicken Curry Stew,  
Rice, Pineapple Chunks,  
Drink

*Send love notes to Pam...*

### Friday, February 8

Hawaiian Plate  
Deep Fried Mahi, Tartar  
Sauce, Tossed Salad,  
Rice, Drink

**PAYDAY!!!**

*Watch for a new Update.*