



Polynesian Cultural Center

UPDATE '90

Employee Newsletter

Friday, February 2, 1990

ALOHA 'OE

Missionary Couple Return Home

Elder and Sister Treglown, missionaries who had been called to serve in the Center the past 18 months, are returning home. Their service has been in the Chapel and Mission Home.



Elder and Sister Treglown are seen here in front of the Mission Home after their farewell canoe ride.

For those who have taken the time to stop by and see the photo/history of Laie that Elder and Sister Treglown have put together, you know of their dedication.

The Treglowns have been especially happy here at the Center. Elder Treglown commented on how the experience of returning to Polynesia has been a pleasant one. Elder Treglown served his first mission in Samoa and he expressed his love to

the village workers who have shown a great deal of love and kindness toward them.

For those who would like to write to the Treglowns at home in Utah, there address is:

**Elder & Sister Treglown
2858 West Ella Street.
West Jordan, Utah 84088**

If you want to write to them, you'll have to write to them soon. Treglowns, like so many of the couple missionaries, are only going to be home for about four months. At that time they will depart on another mission. Elder and Sister Treglown have been called as mission president for a yet undisclosed mission. They know where they are going, however, Elder Treglown explained that they cannot release that information until a later time.

From all of us at the Center, mahalo, for your dedication to the work, your kind spirits, and your service to the Lord. Aloha 'Oe!

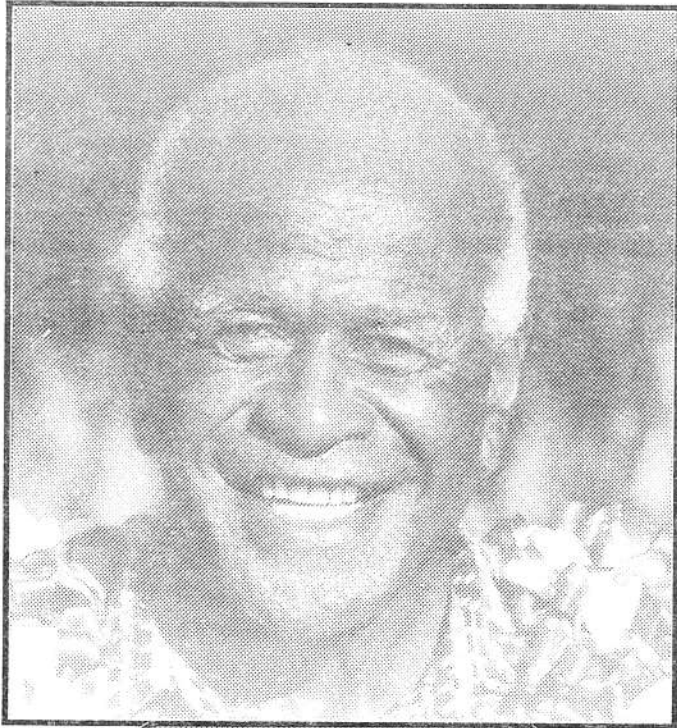
Inside This Issue *HappyGroundhog Day!*

- PCC Living Treasure passes away in Fiji
- Villages bid farewell to missionaries
- Konishiki at PCC
- Employee Menu
- MIS Calendar & Tips

**DEADLINE
for the next UPDATE
Monday, Feb. 12, 1990**



Living Treasures In Memorium



Isireli Racule

Anyone who has heard the song "**Bula Laie**" experienced a great loss recently as the passing of Isireli Racule in Fiji, January 18, 1990 was announced.

Isireli was the first Fijian to be recruited by the Center to bring a Fijian entertaining group and build the Fijian Village. Among his most lasting accomplishments as a musician was composing a song that would debut at the opening of the center. This song "Bula Laie" has been a favorite of guest and local people as well. It was also used as the theme song for the Elvis Presley movie "Paradise Hawaiian Style" that was made on the Center grounds in the early sixties.

Another great accomplishment for Isireli was that he was a great missionary for the Church. This is not so unusual except for the fact that Isireli Racule was not a member of the Church. Sr. Vice President, David Hannemann commented that the last time that he and his wife were in Fiji they saw Isireli on a Saturday. He told them that he would see him (Hannemann) in Priesthood meeting the next day.

Sent to Fiji to represent the Center, Ermosi Damuni, presented a Tabua (Whale's tooth) as a cultural gift of respect to the family.

Gateway Corner Employee Notes

We would like to welcome with open arms our new workers: Krisitine, Kathryn, Krista, Tala, Arieta, Cindy, Kim, Cecilia, Fusi, Shane, Frank, and Evalani!

Hope you enjoy your stay with us at Gateway!

Congratulations to Elder Ben Ward who recently received his mission call to serve in Brazil. he will report at the MTC on 2/29/90. Good Luck Ben! You'll be a great missionary. See you when you get back.

Happy Birthday to Kim and Lorraine! Remember, you'r not getting older but just getting better!

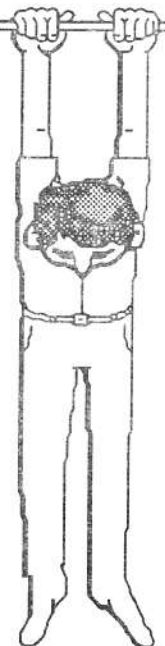
Magi, don't be a stranger. Gateway will always be your friend! Just ask Max!

To 102, Good luck with your new life in Utah! Thanks for all you've done for Gateway. We made a good team. Love and Take Care, ex-101 & 104.

YOUR SUPPORT IS VITAL!

The UPDATE needs your help. If you have any articles to submit for the next UPDATE please submit them to Allen Kroff, at Special Projects by Monday, February 12, 1990.

Suggestions for articles is also welcome. You may also call articles in at 3115. Thanks for your support!



Village Corner

Employee Notes

New Hire

Annie Caffery	Maori Village
Tui Palui	Maori Village
Jacqueline A. Harris	Maori Village
Mark Wilson	Maori Village
Elizabeth Malu	Tongan Village

Belated January Birthdays

1-06	Jessie Berniere
1-13	Margory Christy
1-17	Ana Tuifua
1-17	Unaloto Kioa
1-08	Sofia Turaga
1-27	Kaipo Manoa
1-27	Terri Panee
1-31	Senie Leausa

February Birthdays

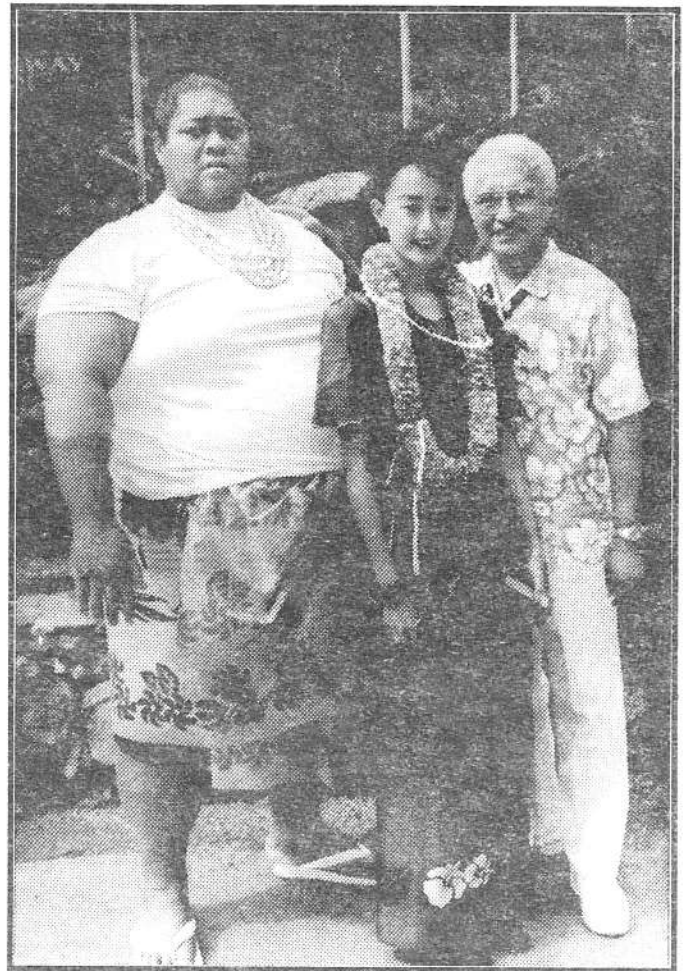
2-06	Laisani Kauvaka
2-15	Sinave Williams
2-15	Scott Parry
2-02	Kapeneta Tafiti
2-20	Pepe Faavale
2-21	Sisilia Npuaku

Babies

Unaloto Kioa - Baby Girl



KONISHIKI Visits the Center



*Konishiki, shown here with his fiancée,
and Sr. Vice President, David Hannemann*

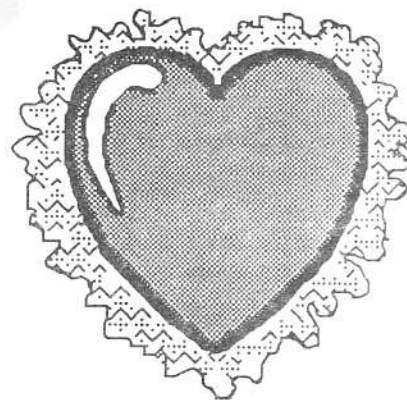
Waitangi Day

The Maori Village will be
celebrating their
cultural day on Saturday,
February 10, 1990

Saliva'a Atisanoe, better known as KONISHIKI to those who watch the Sumo Tournaments on KHNL13, made a surprise visit to the Center this last Wednesday, January 31st, 1990. Atisanoe is Hawaii born and educated. He attended high school at Waianae, where he excelled at... what else... Football.

It was after high school that Atisanoe decided to pursue the life of a Japanese Sumo wrestler. Konishiki is extremely well known in Japan, and he has a respectable following in Hawaii as well.

*Give your Valentine a
special message in the
next Update!*



*The Update will come out on
Friday, February 16, 1990
so submit your "special" Valentine to
Special Projects early!*

Computer Update

WordPerfect Article About PCC

A little while ago we reported that the Wordperfect Magazine staff had sent a reporter here to do a story on how the Center uses WordPerfect. The article hit the stands this month, and did we get good coverage. The article covers four full pages and has one full page color picture from the Center. There are also other pictures used although these are smaller. The article is mostly about the Center and how various people in the Center use the WordPerfect word processing software for a variety of jobs. If you would like to read the article you can stop by MIS and take a look.

Congratulations should go the MIS gang and especially to Lei Cummings for their effort to get WordPerfect interested enough to send here.

Included in the article were two special macros. Since quite a few people use the Franklin Day Planners we decided to print the special macro to print Franklin sized pages. We hope that you will find it useful.

Franklin Planner Macro

To create your own memo to print on Franklin Planner-sized paper, follow these steps:

Note: You can modify this macro to work with any specific format by changing the paper size, margins and tab settings.

Press **Macro Define** (Ctrl-F10), name the macro (i.e., Alt-F), type a description and press (Enter).

Press **Format** (Shift-F8), (2) Page, (8) Paper Size, (6) Half Sheet and (1) Standard. Press (5) Margins, type 1" for top margin, press (Enter), type 0" for the bottom margin, and press (Enter) twice. Press (1) Line and (7) margins.

Type .85" for the left margin, (Enter), .2" for the right margin and press (Enter) twice. Press (1) Line, (8) Tabs and Delete to End of Line (Ctrl-End) to clear all tabs. Type 1.1", .25" and press (Enter). Press **Exit** (F7) twice and **Macro Define** (Ctrl-F10) to end the macro.

To invoke the macro press **Macro** (Alt-F10) and (Alt-F) before typing the information you want in your Franklin Planner or other time scheduler.

Your document will automatically be formatted so its margins and paper size will match those of your daily scheduler.

Gateway 100 Club Gets Its First Members

Since 1987 the management at the Gateway Restaurant has been implementing a work recognition program. A worker need not do anything special to earn this recognition, just "be a consistently good worker" according to Max Purcell, restaurant manager. This system is not another "who shall we pick this week" system. On the contrary, it is a system which has been adapted from an article in the Harvard Business Journal. The system gives points for consistently good work behaviors, and takes away points for detrimental work habits. In order to be in "The Gateway 100 Club", you must earn a total of 100 points.

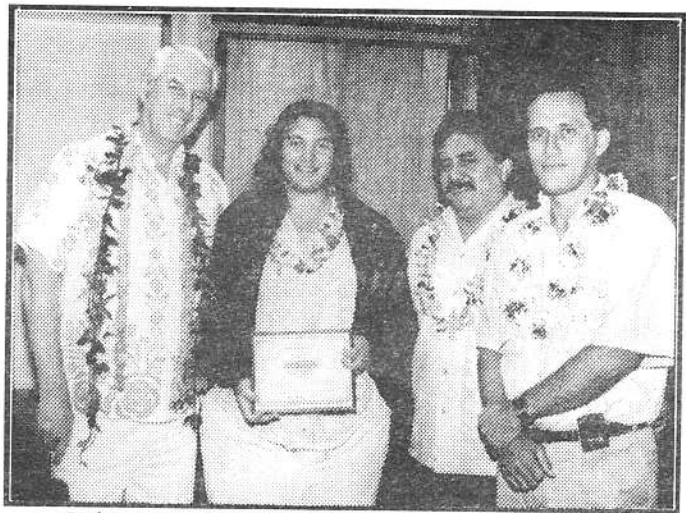
Three workers were inducted into the club on Wednesday, January 31st, 1990. These workers are the first to attain the 100 point total. Again according to Max Purcell, "We wanted to make sure that whoever made it into the club would be above scrutiny".

The three who became the first members of the Gateway 100 Club are:

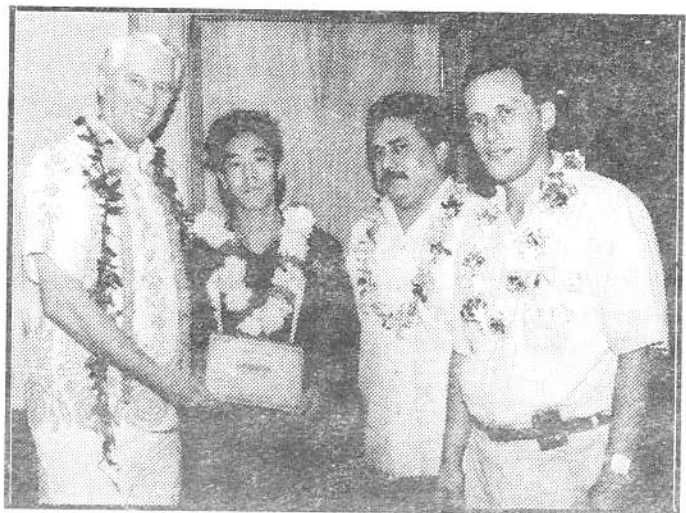
Allison Langi	Cashier
Craig Yamagata	Lineman
Lipena Laufiso	Laundry Supervisor

What makes the difference for these employees? They are willing to work where they are needed, whether it is in the Gateway or the laundry. It is more of a "team" spirit.

By starting the Gateway 100 Club an example is set so that other departments might want to do something similar. According to Gateway, the challenge has been given.



Allison Langi receives her Gateway 100 Club certificate, jacket, and swatch from manager, Max Purcell and is congratulated by President Christensen and Sr. Vice President Magi Keil.



Craig Yamagata receives his Gateway 100 Club certificate, jacket, and swatch from manager, Max Purcell and is congratulated by President Christensen and Sr. Vice President Magi Keil.



Lipena Laufiso receives her Gateway 100 Club certificate, jacket, and swatch from manager, Max Purcell and is congratulated by President Christensen and Sr. Vice President Magi Keil.

Villages Bid Good-bye

Treglown's Farewell

On Monday, January 29, 1990, the Treglowns took a final canoe tour which took them to each village. At each stop the villages presented the missionaries a token of appreciation for the service and dedication the missionaries have given the Center.

The gifts given by the villages include:

Samoa	Kava Bowl
New Zealand	Poi Balls
Fiji	Salusalu
Hawaii	Lauhala Basket
Tahiti/Marquesas	Shell Leis
Tonga	Tapa Cloth
Auxiliaries	Coconut Leaf Bowl

The Villages would like to wish the Treglowns a very special Aloha 'Oe!



Elder and Sister Treglown join the Samoan village workers in a short dance.



Chief Meleki and his workers present Elder and Sister Treglown with a beautiful Salusalu.

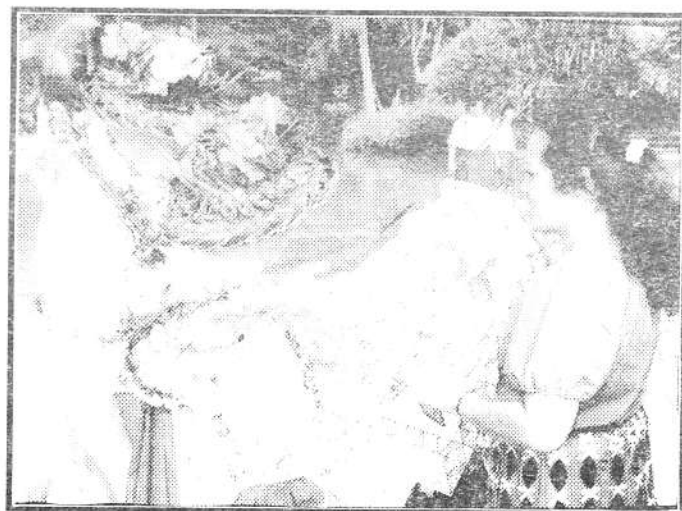
Special Projects

has

Interisland coupons

**for Aloha Airlines
\$34.00 (Cash Only).**

*No expiration date
PCC Employees Only.*



Eseta Toelupe presents the Treglowns with a tapa cloth with the royal seal of Tonga.

Editor's Corner To Lincoln

Abraham Lincoln was once taken
task by an associate for his
attitude toward his enemies.
"Why," he was asked, "do you try
to make friends of them? You
should try to destroy them."

To which Lincoln replied, "Am I
not destroying my enemies
when I make them my friends?"

Abraham Lincoln was walking
down the street in Springfield, IL,
one day with his two sons when
the boys started quarreling.
"What's the trouble with your
boys, Mr. Lincoln?" a passerby
asked.

"The same thing that's wrong
with the rest of the world," was
Lincoln's reply. "I've got three
walnuts and each boy wants two."

Abe Lincoln was not a handsome
man, certainly not in the
Hollywood sense. Still, he could
even joke about his homeliness,
and in a very real sense. This
made him handsome.

Once in a debate, Douglas, a
major rival, called him
"two-faced."

Lincoln turned to the crowd and
said, "I leave it to my audience.
If I had two faces, would I be
wearing this one?"

President's Day February 19



EMPLOYEE MENU

Friday, Feb. 2

Teriyaki Wings
& Drumsticks
Natural sauce
Mix Vegetables
Steamed Rice
Cold Drink

Monday, Feb. 5

Fried Hoki Fish
w/ tartar sauce
Tossed Salad
Steamed Rice
Cold Drink

Tuesday, Feb. 6

Beef Curry Stew
Tossed Salad
Steamed Rice
Cold Drink

Wednesday, Feb. 7

Deep Fried Chicken
w/Gravy
Tossed Salad
Cold Drink

Thursday, Feb. 8

Teriyaki Pork
w/ Natural Sauce
Seasoned Peas
Steamed Rice
Cold Drink

Friday, Feb. 9

Barbecue Chicken
Seasoned Peas
Steamed Rice
Cold Drink

Monday, Feb. 12

Hamburger
w/ onions & gravy
Seasoned Corn
Steamed Rice
Cold Drink

Tuesday, Feb. 13

Chicken Curry Stew
Macaroni Salad
Steamed Rice
Cold Drink

Wednesday, Feb. 14

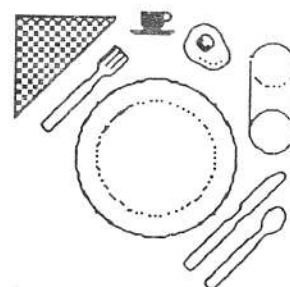
Fish Newburg
Tossed Salad
Steamed Rice
Cold Drink

Thursday, Feb. 15

Pork Chop Suey
Peas & Carrots
Steamed Rice
Cold Drink




Friday, Feb. 16

Teriyaki Wings &
Drumsticks
Natural Sauce
Mixed Vegetables
Steamed Rice
Cold Drink



Menu Subject to Change
without notice.

February 1990

Sunday	Monday	Tuesday	Wednesday	Thursday	Friday	Saturday
					GROUNDHOG DAY Payday 1 	2 3
4	5	6	7	8	9	MAORI CULTURAL DAY 10
11	12	13	Valentines Day 	14	Payday 	16 17
18	President's Day 19	20	21	22	23	24
25	26	27	28			

PSI Corner Mailbox Use

The Mailbox System (MB) is an excellent office automation tool that makes communication between users easier to manage.

Sometimes your mailbox can get cluttered with a lot of important mail that you don't really want to delete. One way to separate the urgent notices from the rest of your messages is to "Mark" the message to another file (OLD file). to do this in MB-MSG-I, simply type "M" at the action line to "Mark" the mail you would like to be moved into the OLD message file. to select all of your OLD messages,

simply type "SO." If you would like to look back at your NEW messages again, type "SN". This should help you keep you more important messages organized and accessible. The first time you select the MB-MSG-I, the system will automatically select you NEW messages first.

If you have any questions or comments about this enhancement please call Chris Wilson at MIS.

(Or I guess you could leave a message on the PSI-Mailbox)

