



EMPLOYEE UPDATE

Polynesian Cultural Center ☐ February 15, 1980

A step into history with our Maori friends



President's Day holiday on Monday

Monday, February 18 (President's Day), is one of the holidays full-time PCC employees are eligible to receive. However, the Center will be open that day, and if you will be working, please be sure to see your manager or supervisor to make up the holiday by scheduling compensatory time off on another day. Please also remember that your "make up holiday" must be taken within 30 days.

President's Day, observed the third Monday of February, pays tribute to George Washington, the first president of the United States.

Hearts full of song

Village women shared their smiles and songs with visitors.

Our Maori village's Waitangi Day program last Saturday was certainly a fitting celebration of that important event in New Zealand's history—the signing of the Treaty of Waitangi.

Helping to make the day extra special were singer Frankie Stevens and Sir James Henare, one of New Zealand's most respected citizens.

As the guest of honor, Sir James shared the story behind Waitangi Day with other visitors. He also stressed the importance of education and urged the Maori students to study hard and earn their degrees so they will be better able to contribute in the development of their homeland.

See flip side for more Waitangi Day photos.

BYU--H Calendar

Friday, February 15

- Homecoming Alumni Assembly, auditorium, 10:30 a.m.
- Alumni banquet, Aloha Center mall, 7 p.m.
- Homecoming Ball, ballroom, 9:30 p.m. Admission is \$2 for students and faculty members with an activity sticker and \$4 for all others.

Saturday, February 16

- Movie, "Romeo and Juliet," audi-

torium, 2, 6:30 and 9:30 p.m. Admission charge.

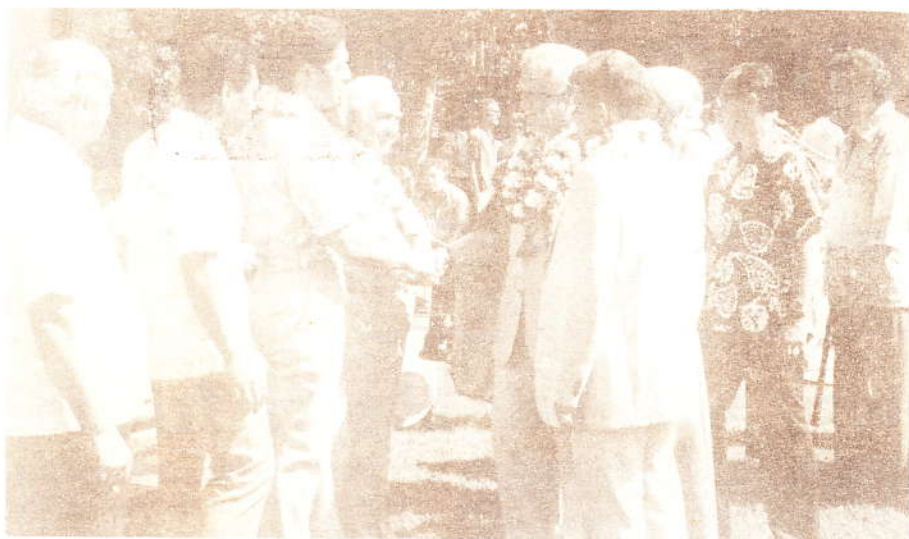
- Men's basketball team plays Hawaii Pacific College, gym, 7:30 p.m.

Monday, February 18

- President's Day Holiday

Wednesday, February 20

- Jazz ensemble, auditorium, 10:30 a.m.



Honored guest

General Manager Bill Cravens greets the honored guest of the day, Sir James Henare.

Row of warriors

The men of the village show their strength in this Waitangi Day number.



New Zealanders, all

Singer Frankie Stevens (second from left) poses with a few village friends after the program.