



February 18, 1983

update 83

Polynesian Cultural Center

PCC Employee Speaks at Aquaculture Conference



Kelly comments, "PCC has some pretty nice sized prawns in their own lagoons, the same kind the farms raise. You just have to look really close along the edges to see them".

Kelly Kump who works in the Graphics Department of PCC was approached by BYU-HC and given the opportunity to represent them among world renown Ph.D.s. Kelly spoke of his research and experiences at the freshwater prawn farms throughout Hawaii, the problems and possible solutions.

Last week was the first bi-annual Aquaculture Conference dealing with crustaceans. There were some 60 speakers from 32 different countries in attendance to speak on the common international problems experienced in this field. Among the guest speakers was our beloved President Ezra Taft Benson and his

wife. President Benson bore his testimony during his speech, reminding all those listening that "Men born into this world are stewards, they have a moral obligation to our environment."

Kelly, a struggling biologist who will graduate the end of Spring, did much research regarding the prawn farms of Hawaii. He has worked the farms and been closely involved with them a number of years. Kelly shared statistical information on problems of raising freshwater prawns. All in all the Conference was a tremendous success and all who attended look eagerly forward to 1985, when the next conference will be held.

Center Lends a Hand To Youth

Through its community service program, the PCC is reaching out to lend a hand, literally, to build up and develop the youth of the North Shore. With the goal of producing acclaimed athletes of good academic standing, the program kicks off Saturday the 6th of February with a ten team 'seven-a-side' tournament planned for boys of grades eight to eleven.

According to co-ordinator Kalili Hunt, the program is modeled loosely after Big Brothers of America. Prominent members of the local citizenry have offered to contribute their time to participate with the youth at planned activities which include such things as nautilus training sessions at BYU-HC gym. One of the rugby teams scheduled for the tournament is managed by President Shumway and coached by Samoan Village

Chief Vaimalu Toilolo. Other leaders are Center personnel like Maori Chief Cleo Smith and Emil Wolfgramm.

The program is an encouragement of sorts for kids to continue on for higher education. The athletic portion of it is refined to a mapping of daily goals for the individual students. The Center has financed the uniforms for the rugby teams, and depending on the success of the initial stages of the boy's program, plans to effect a similar one for girls is in the thought processes. The whole project meanwhile focuses on the Kahuku High School kids.

Who knows, maybe somewhere out there in the waves of Hukilau or the Laie Shopping Center parking lot lurks a future 'Mean Joe Green' or perhaps even a 'Jim Brown' or a 'Dorsett'!!

NEWS

Reservations Takes On Six More

The Reservations and Ticketing Department is literally bursting at the seams with blessings. Six blessings actually, in the radiant form of expecting mothers working in the office. 'Mom-to-be' Ella Manumaleuga says, "We're proud to be keeping the commandments!" Maybe next time, however, they could keep the commandment at different intervals, for it seems all are due the same time, May into June.

The impending population explosion in Reservations will not disrupt the normal flow of operations as it is carefully being kept in check by all the 'lesser blessed' personnel. Despite rumors that the Reservations building has sunk some eight inches into the ground over the last month or so, all is well up front.

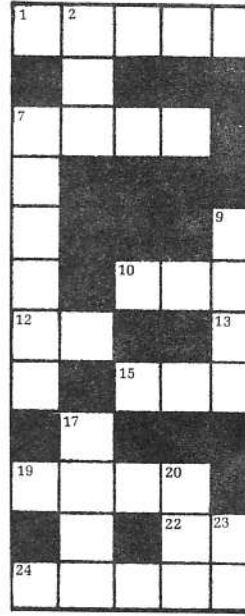
Congratulations Faith Ako, Ella Manumaleuga, Jane Ann Chase, Judith Arcansallin, Daryl Whitford and Wendy Lulu.

INTRODUCING



Preston Cameron is the Financial Manager for Shop Polynesia. He arrived at PCC from Utah where he graduated from BYU-Provo with a degree in Finance and is one of three newly appointed managers for Shop Polynesia. Preston and his wife Tammy have two daughters, Nicole and Tiffany. He is the son of President Cameron of BYU-HC.

Congratulations Preston on the appointment and welcome to PCC.



Consolidation of Departments

The Research and Cultural Education departments have been consolidated under Director Emil Wolfram. As one department Emil was asked what he thought about the change, he said "I think it's good because Research findings can be routed directly into the education system."

RUGBY

FEB 19: Seagull vs. Freeway
Laie vs. BYU

Last week at half time it was 0-0, then we exploded into a 26-0 win against the Harlequins!

Both the games this weekend will be played here in Laie. The Seagulls at 1:00pm and BYU at 3:00pm. Support your friends on the teams, don't miss these fast moving, exciting games!!!

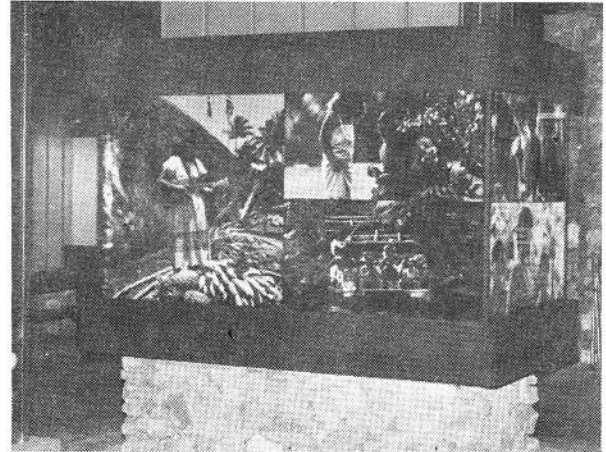
Psssst!

Got some news for us?

CALL: UPDATE
ext. 3200

SHOP POLYNESIA PRESIDENT'S DAY SALE

Starting Monday, February 21st Shop Polynesia will be having a 40% off sale, for all the employees, that will last until the end of the month.



The has liter on new ful faces side the column lighted, tures of times at the Cent festive c will gree for man come.

VOLUNTEERS FROM VITA OFFER FREE TAX HELP

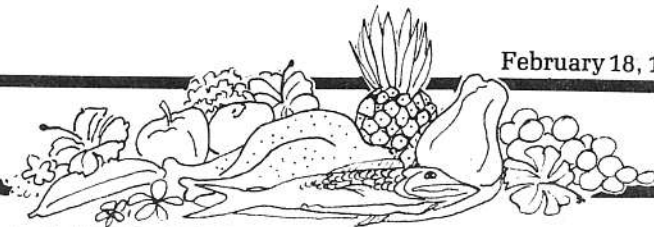
Do you think you might be eligible for an income tax refund? Now is the time to apply! If you are having difficulties trying to understand the tax forms, VITA may be able to help you. VITA is the Volunteer Income Tax Assistance program that is offered free of charge to aid lower income, elderly and student

taxpayers. They will assist you in preparing your Forms 1040, 1040A or 1040EZ. If you qualify for the earned income credit, child care credit, charitable contributions, or the new deduction for a married couple, they will help you get full tax benefits.

VITA will be assisting the public on Saturdays from 9:00am to 12:00 noon at the Hauula Satellite City Hall and Wednesdays and Saturdays from

9:00am to 12:00 noon in the Center Room 135, from 12th to April 13th. Please bring your social security number, the statements you received from the bank (FORM 1099 interest and tax statements), a copy of last year's tax return available and any other information concerning your income and expenses.





THE FOOD BASKET

by Rubina Forester

Modern health observers firmly believe that when Pacific Islanders industriously cultivate their own foods, their health and general vitality are better than when so-called "civilized foods" replace to any extent the local native ones. A study in Western Samoa revealed that when the Samoans subsisted largely on native foods, the condition of their teeth was far superior to those who rely upon imported foods.

Have you seen the teeth in the smiles of newly arrived Polynesians? Their whiteness and strength is credited in many cases to the healthy consumption of *breadfruit* (all kinds belonging to the species *ARTOCARPUS INCISUS*.)

The breadfruit tree, with its large lobed leaves, is very decorative with or without its round or elliptical fruit. Throughout the tropical and semi-tropical islands of the Pacific breadfruit constitutes an important staple wherever it can be grown, which is likely to be on all but the smaller and drier islands.

How To Pick the Well-matured Breadfruit

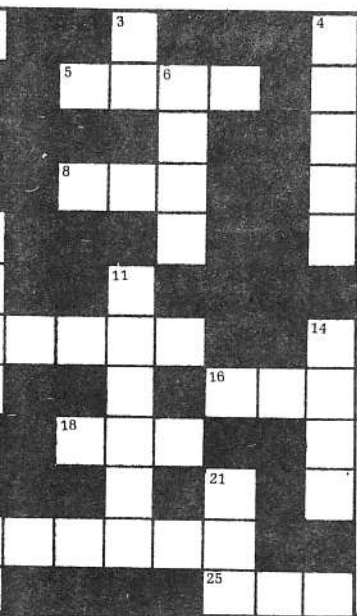
Samita Iosua (Security): When the sap has come out and covers most of the breadfruit. Sometimes the green color turns to a pale yellow. Also when you flick the breadfruit it gives a hollow sound.

Emil Wolfgramm (Research): I look at the 'eyes' of the skin cells. I determine by their color when to pick. Also look where the sap oozes out, if the majority of cells have secreted sap then it's time to pick.

Selai Lesu and Penina Ngatuva (Fijian Village): When the color is a bit yellow. The squares in the skin of the breadfruit should be smooth and far apart. And the milk (sap) should be dry on the skin of the breadfruit.

Charles Teripaia (Tahitian Village): When you tap the breadfruit it should feel soft. And the breadfruit should sound hollow and echo.

LYNESIA



ACROSS

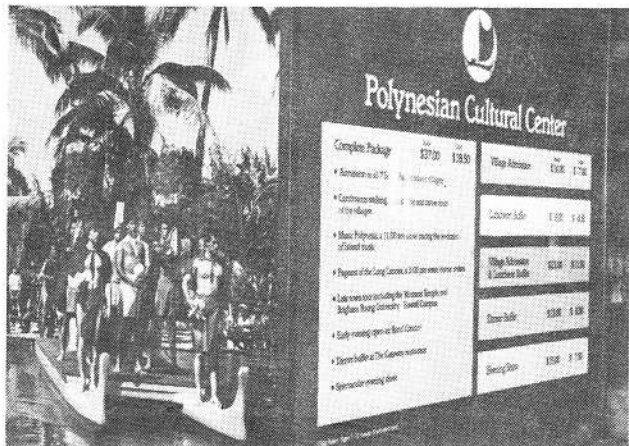
1. TONGAN NAME
5. BIRD
7. HULA TEACHER
8. COME (Samoan)
10. CHICKEN (Tahitian)
12. HAWAIIAN GOD
13. POLYNESIAN ISLAND GROUP
15. WORN ABOUT THE NECK
16. MAORI QUEEN'S FIRST NAME
18. MADE FROM TARO
19. HAWAIIAN WORD FOR HEAVEN
22. TOWN ON OAHU
24. ISLAND IN HAWAIIAN CHAIN
25. HAWAIIAN WORD FOR PIT

DOWN

2. BREADFRUIT
3. MAORI VILLAGE
4. TAHITIAN FLOWER
6. POLYNESIAN ISLAND GROUP
7. HAWAIIAN MAN (colloquial)
9. ONE (Samoan)
11. BLACK (Hawaiian)
14. EDIBLE ROOT
17. PRESTIGE; AUTHORITY
20. MAORI WORD FOR FISH
21. ENGLISH WORD FOR DUNA (Fijian)
23. HAWAIIAN WORD FOR FOOD

IONS

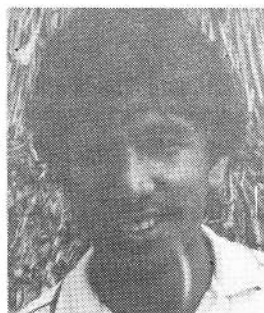
entrance
ally taken
and beauti-
Just in-
doors, each
is full of
color pic-
he events,
and fees of
er. These
decorations
the guests
y years to



What to you is the most important aspect of PCC ?

Update staff members polled employees this week to find out their response to this question. Here are three thoughtful replies. What do

What do you think?



Corey Keil: "It's the smiles!"



Hideko Adachi: "The 'aloha' spirit of the employees and the chance to work in the service of the church."



Mabel Mallari: "It's teachings of the different Polynesian cultures."

ne Aloha
February
ring your
e interest
om your
(st), (age
I V a
return if
relevant
ur income

viewpoint

vernicepere

To give someone an assignment without supplying him with the necessary information in order to accomplish it is like asking him to be a magician and pull rabbits out of a hat.

It is frustrating for a worker to be expected to produce professional work if the right tools are not provided. While it is possible to hang a picture on a wall by using a shoe for a hammer, it is not possible to build a house doing so. Some of my experience has been in the graphics and print-shop areas, and I have found that the greatest frustration a worker in these areas has begins with the "tools" others provide as they route requests his way.

Every week I write a Viewpoint. By the time I send it to be typeset I have prepared it exactly the way I want it to read. This means that every comma is where I want it to be and every word is the right word for what I want to say. It also means that I have checked the spelling of each word, and, as a courtesy to the Graphics workers, have double-spaced my typed copy. There is an added benefit to such preparation: When I have sent my work down error-free, then any errors I pick up later will likely be typographical and easily corrected. If I have done my work well they should not be major grammatical blunders of sentence structure or tense.

This was brought home to me last week when it was pointed out from the President's office that I had neglected to put the date on an invitation to an upcoming Center event. All my work on the design and all the Graphics workers' layout and the printers' finished product really didn't count for much as long as the invitation lacked that all-important date!

To go back to our builder: If we were to give him bent nails and a shoe to build our house, he would likely throw his hands in the air and give up, -- or begin looking for something with which to pound the nails straight before he can start the job.

The whole point of this parable, of course, is to question why, in the first place, we should expect him to produce rabbits out of a hat? Sometimes we lump people and responsibilities in our minds thinking that if a printer prints then he must also know how to write the sentence we have in our heads. It doesn't work that way. The builder cannot construct our dream house unless we give him a detailed blueprint first.

Much time is wasted when we neglect to give responsible instructions to those who assist us in accomplishing our work. If we are satisfied with hanging pictures over the holes in our walls we may very well continue providing our worker with bent nails and inadequate tools, but if what we want is excellence, then at the very least, we had better put a hammer in his hands.

HAPPY BIRTHDAY

- 2/21 MON: Fumie Akashi
- 2/23 WED: Tamlyn N. H. Kau
David Kubota
Louise Lee
Fetoai Maseuli
Penifale H. Ngatuvai
Amelia F. Tovo
Mani Tuia
- 2/24 THURS: Harvey G. Alapa
- 2/27 SUN: Manuele Laumatia
Vaimalama Lefau
Peleise Nunu

☉ If anyone does not wish their birthday published, please don't hesitate to contact Briana at ext. 3200.

NOTICE

In addition to last week's announcement of changes in the luncheon, please be informed that there will no longer be any French bread sold on pay Fridays.

You want to get paid, or what?

Be aware that even though Monday is President's Day, an official holiday for the Business Office, Payroll will be open to receive time cards from all departments.

Payroll requests that remittance of time cards be prompt in order to process them for pay day.

ANSWERS

