



Polynesian Cultural Center

Employee Newsletter

Friday, March 1, 1985

UPDATE '85

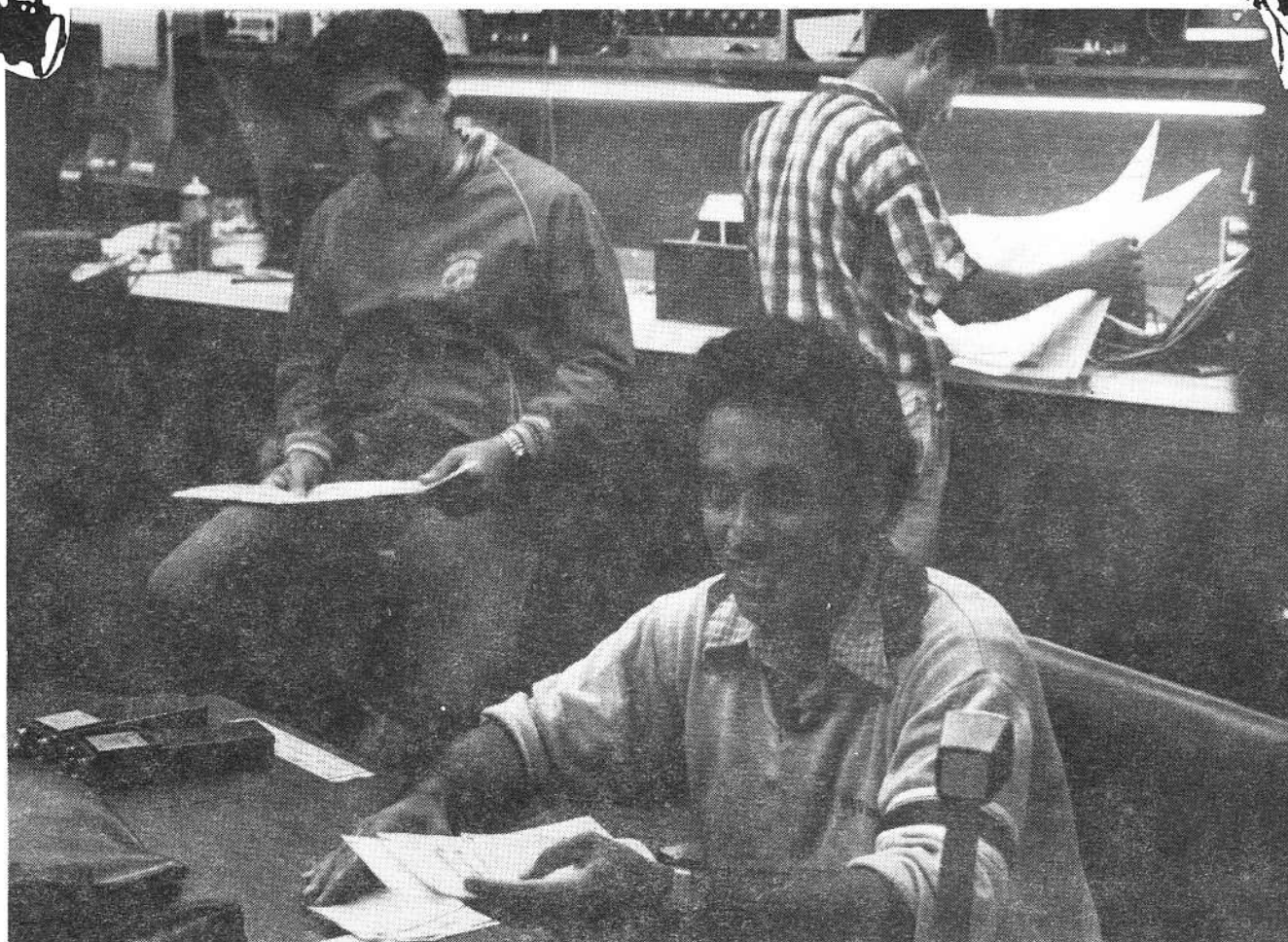


Homecoming '85

A near PCC sweep!

Spotlight On...

SOUND SERVICES



An integral part of the Technical Services team is a group of ten men and one woman known as Sound Services.

Sound Services provides possibly the highest quality sound reinforcement of any Polynesian show in the state of Hawaii. They have been complimented on many occasions by professional sound people who have visited the Center and seen the evening show.

The responsibilities of the Sound Services team include setting up and pre-checking all equipment used for both the "Aloha Festival" and "This Is Polynesia." This involves microphone and line checks, checking all tape player machines and making sure the mixing boards are operating properly. The responsibilities extend to Sound Services technical repair people who make sure that our sound equipment is in perfect working order at all times.

A primary goal of sound technicians is to eventually become an audio mixer. In this capacity they are able to not only set up and do pre-show checks, but have the unique responsibility of operating the sound mixing equipment.

This involves mixing sound for taped music, which in most cases is pre-set, and the more difficult task of mixing the live music of both vocal and instrumental musicians. That in itself is a very challenging and rewarding aspect of being an audio mixer.

The actual training period will vary depending on the individual and their ability to get an "ear" for sound. This will include two months of supervised training to learn the basics of sound mixing. Eventually it may take up to a year to get that "seat of the pants" experience necessary to be able to make split second trouble shooting decisions that often occur during the shows.

Add to all of this the assignments which Sound Services receive on cultural days and during special projects, such as the recent Waitangi Day celebration, and the visit of the Japanese broadcasters.

The sound crew is a closely knit family who extend their associations beyond their work, by getting together for parties and other group outings.

Supporting each other spiritually is also high on the priority list. They attend special priesthood ordinations, Eagle Scout ceremonies, blessing babies of crew members and have occasional temple outings. They are especially proud of the fact that they have been instrumental in the reactivation of some of their crew members into the Church. This effort has resulted in having one crew member married in the temple and another preparing for his mission call this summer.

Sound Services takes pride in the work they perform and is grateful to the Center for providing the opportunity to acquire this highly technical skill. Of course things do not always go perfectly, when that happens sound services will be the first to "hear" about it.

The UPDATE salutes the members of the Sound Services crew for their outstanding work and commitment to excellence. They are part of the reason why the PCC is still the number one show in the Pacific, and getting better all the time.

"The Great PCC Trivia Marathon"

This is the fourth week of the Polynesian Cultural Center's "Great Trivia Marathon" sponsored by the UPDATE. Points for this week's questions will be added to the total for the Grand Prize, and a weekly winner will be chosen. After you answer the questions, write your name and department at the top and turn in the completed form to Tammy Au Meyers at the Special Projects office. Your answers will be tabulated and the total points listed. Each week that you participate, your points will accumulate. It's not too late to win the Grand Prize, but you've got to start this week. If you're stumped by some of the questions, fill out the form and turn it in as all you points will be added to your Grand Prize total.

GOOD LUCK!

The winner of last week's trivia marathon was Leialoha Jenkins, who was chosen by a drawing, and was awarded 2 tickets for dinner at the Gateway restaurant. The following people also recieved 8 points: Sam Langi, Mahana Pulotu, Grace Edmonds, Phillips Ieremia, Gladys Lindley, and Luse Magalei.

THIS WEEK'S QUESTIONS ARE:

1. When did the Gateway Restaurant first open? _____
2. What was Emily Kaopua's first job at the PCC? _____
3. What rock group visited the PCC last year, causing great excitement among the young ladies of the community? _____

FOR 2 POINTS

4. What is the current price for a complete package? _____
For a child's package? _____

FOR 3 POINTS

5. What are the Missionary couple's names who are stationed in our mission chapel?
_____ and _____
(his) (hers) (last)

FOR 5 POINTS

6. Name 5 "ASK ME" guides. (first name)

Answers to last weeks questions:

1. 294 employees
2. Maui
3. 11 kids
4. Isireli Raculi
5. "Drums of the Islands"
6. July 1984

Here are the current leaders points in the great PCC Trivia marathon:

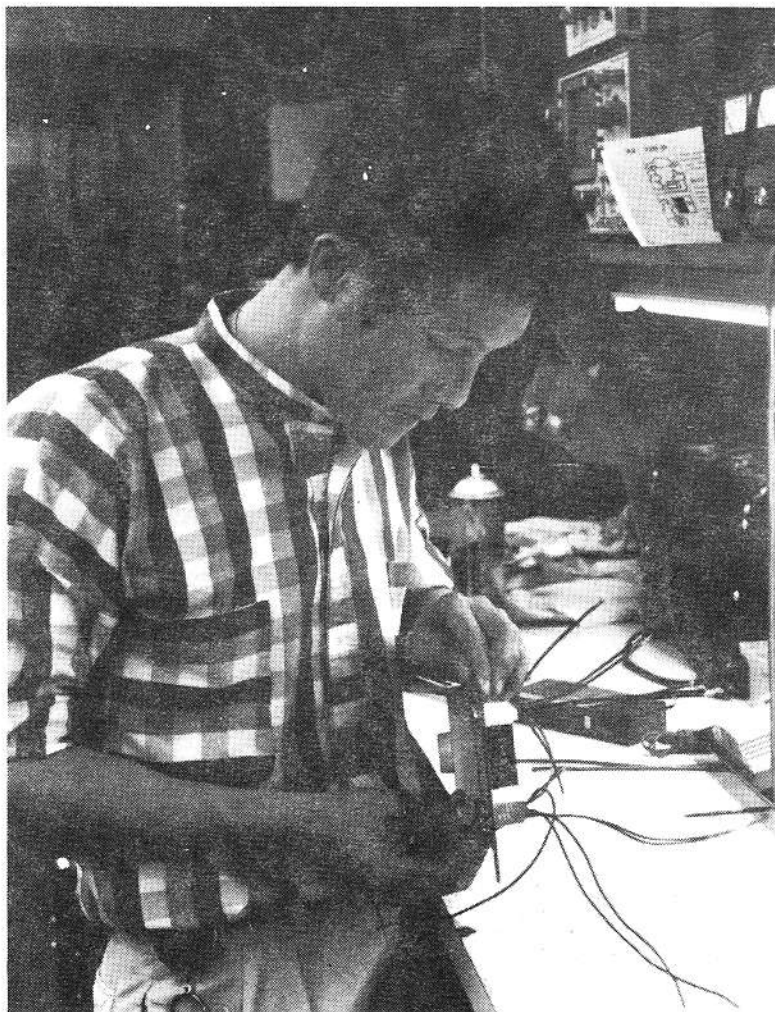
| | |
|------------------------------------|----|
| Mahana Pulotu (Tahitian Village) | 27 |
| Phillips Ieremia (Tech Services) | 22 |
| Sam Langi (Personnel) | 22 |
| Grace Edmonds (Training) | 21 |
| Leialoha Jenkins (Purchasing) | 21 |
| Mike Foley (Public Relations) | 14 |
| Solomon Kahawaii (Tech Services) | 14 |
| Miller Soliai (Tech Services) | 14 |
| Ofa Talaki (Seamstresses) | 14 |
| Rene Tetuanui (Village Operations) | 14 |
| Elouise Kamaouha (Reservations) | 13 |
| Ramond Mokiao (Training) | 13 |
| Gladys Lindley (Gateway) | 8 |
| Luse Magalei (Theater) | 8 |
| Harry Brown (Village Operations) | 7 |



Leialoha Jenkins - winner of last weeks Trivia says, "Thank you Tai, Wilda, Lindy and Jim, but there were only 2 tickets, so I took my husband..."



It's easy. . . just don't touch anything.



Now let's see, is it + or - to ground?



You looking

SOUNDS

This week the the practice of employees who are success of the P Center. This week w of the Sound Serv balance the decible which go through th and midranges audiences of the s These individuals ev the tram tours.

They seldom r but do so much to Polynesia," which is show in the Pacific, a them. Here are thei

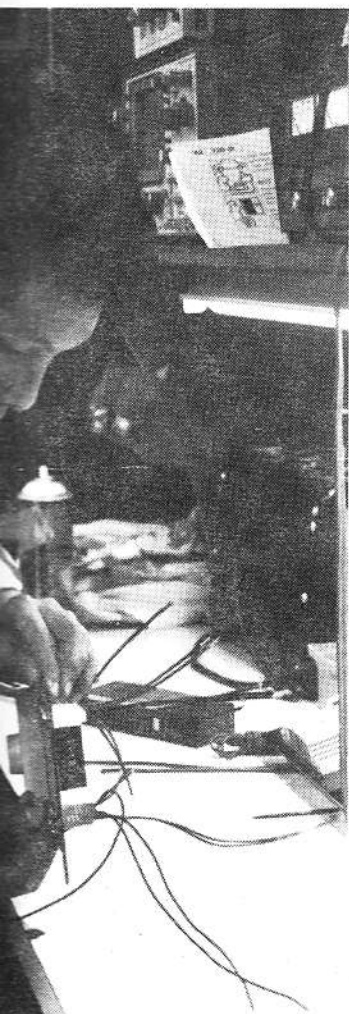
SOUNDS SWEET

This week the UPDATE continues the practice of honoring those employees who are vital in insuring the success of the Polynesian Cultural Center. This week we honor the workers of the Sound Services, who mix and balance the decibels, ohms, and hertz which go through the woofers, tweeters and midranges and reach the audiences of the shows at the PCC. These individuals even fix the sound for the tram tours.

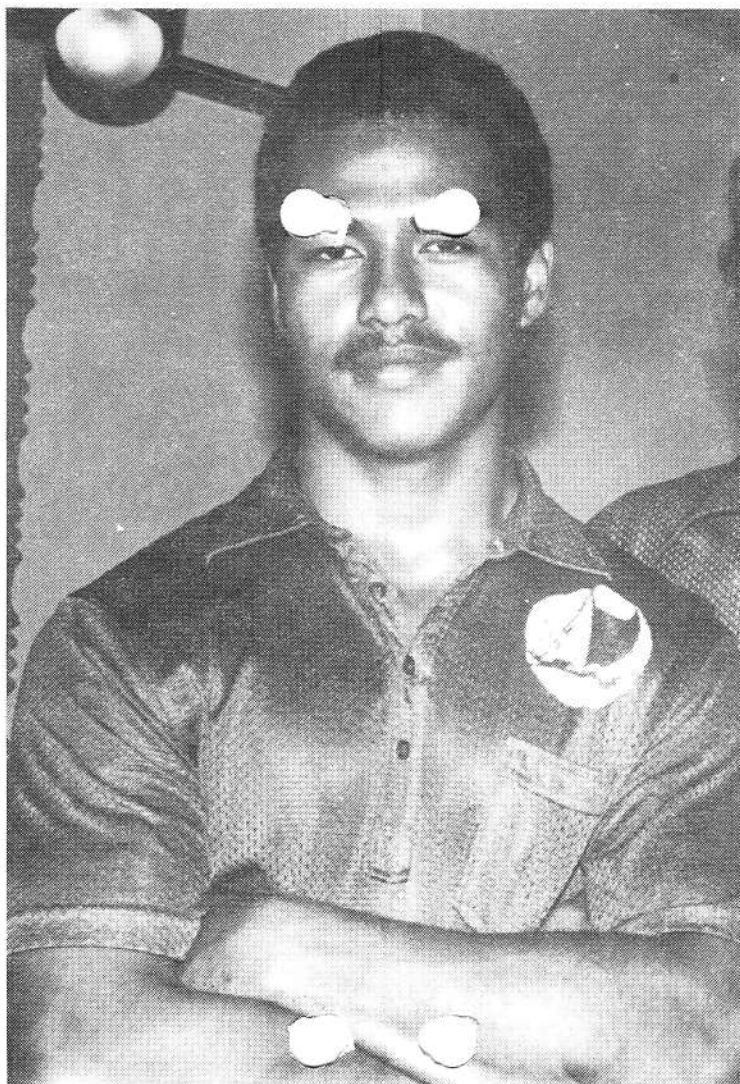
They seldom receive recognition, but do so much to enhance "This Is Polynesia," which is certainly the best show in the Pacific, and so we recognize them. Here are their beautiful faces.



uch anything.



- to ground?



You looking for me?



SWEET

UPDATE continues honoring those vital in insuring the Polynesian Cultural Center, who mix and match, ohms, and hertz the woofers, tweeters and reach the shows at the PCC. Then fix the sound for

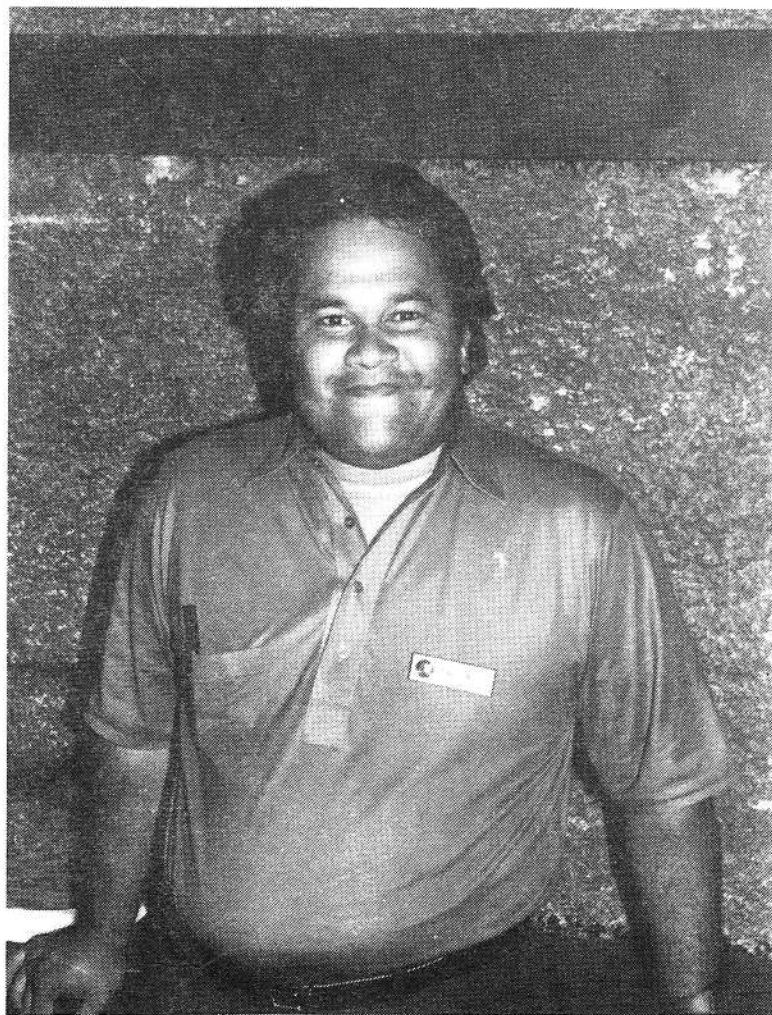
ceive recognition, enhance "This Is certainly the best and so we recognize beautiful faces.



Hook it to the speaker, Brent, not the plants



g for me?



Okay Miller, stop eating on the job.



Second runner-up Cecilia Taufatofua



Miss Aloha Janet Kongaika

Employees Honored at Homecoming

Last week two of the Polynesian Cultural Center's employees were honored at BYU's Homecoming activities. Cecilia Taufatofua, and Janet Kongaika both entered in the Homecoming pageant, along with many other girls from BYU-HC, and were the only girls to represent the PCC's employees during the pageant. These girls represented us well as both of them were crowned, Cecilia was second runner-up to the Queen and Janet was named as the first runner-up behind Ivy Pahia, the 1985 BYU-HC homecoming Queen. Janet was also named Miss Aloha, which is a title given to the girl voted by her peers as the most warm, congenial, and enjoyable member of this group during the contest.

Cecilia, who is a cashier and hostess at the Gateway Restaurant, mentioned that all the girls were very nervous during the pageant, and for most of them, including Cecilia, it was

their first experience with a contest of this type. She said that the pageant was important to her and that she felt it was a great experience which would help her in her future in the world of communications, which she is majoring in at the College.

Janet, who dances in the night show, was voted Miss Aloha, and according to her cousin Cecilia, was very pleasant and enjoyable to work with during the pageant, as well as being very pretty and elegant. "She smiles a lot, and doesn't ever seem to get aggravated even though preparations for the contest are long and exhausting," says Cecilia.

It is an honor for the Center to have these two girls working here entertaining and taking care of our guests, and we thank them and salute them for their achievements. Take the time this week to congratulate them on this accomplishment, and to wish them well in their future endeavors.

ATTENTION PLAN B PARTICIPANTS:

This is to inform you that there will be a new doctor at the Laie Medical Center. Dr. Neilson, a general practitioner, will begin working at the Laie Medical Center on March 18, 1985. His phone number is 293-1603. His hours are M T T H F, from 9:00am to 12:00 noon, and from 1:00pm to 4:00pm. He opens on Saturday from 9:00am to 12:00 noon.

If there is anyone interested in switching over to Dr. Neilson, you may apply at the Personnel Office. Your coverage will be effective March 1, 1985, and Dr. Fruean will be the attending physician until Dr. Neilson is officially open on March 18, 1985.

Note: In order to be effective on March 1, 1985 you must apply at the Personnel Office now.

Te Maori Dignitaries Welcomed

On Wednesday, February 27th the Polynesian Cultural Center was honored by the visit of a delegation of Maori leaders from New Zealand. Mr. Pat Rei, a Maori Elder; Bishop Bennett, the Bishop of Aotearoa; and Dr. Meads, a famous Maori anthropologist; headed this group of dignitaries. The group was honored in the Maori village with a Wero, or a traditional welcoming ceremony, and then were entertained with songs and dancing under the direction of Mr. Tommy Taurima, the Maori dance instructor.

According to George Kaka, the Maori village leader, the visiting group has recently returned from St. Louis where they completed a world tour exhibiting a group of very rare and important Maori carvings and paintings. These masterpieces were sculpted and painted by the masters of Maori art hundreds of years ago, and are very important to the Maori people. Mr. Piri John Sciascia, the Executive Officer Te Maori Exhibition, mentions that the art is a depiction of Maori art from the most ancient carvings through generations, and culminating with very current art from New Zealand.

The carvings and paintings are strongly identified with the tribe which they originated from, and especially the famous canoes which all Maori's trace their roots to. The two canoes represented by this exhibition are Matakau, and Te Arawa, which many of our PCC Maori's trace their ancestry to.

The visiting group was also entertained by the other villages, and then treated to dinner at the Gateway, and our night show, "This Is Polynesia."

Bro. Kaka mentioned that the administration deserves special commendation for recognizing the significance of this visit, and doing everything necessary to insure the visit was the highlight of the world tour. Special thanks from the village go to Pres. Ralph Rodgers, Vice President David Hannemann, Village Manager, Joe Chang, and Special Projects Manager, Pam Su'a.



Vice President of Villages, David Hannemann, greets visitor in traditional manner of New Zealand



Delegation being guided into Maori Village by Vice President David Hannemann and Ropiha Campbell

Mr. Rodger's Neighborhood

This weeks neighborhood was submitted to us by Bryan Bowles, the Theater Manager. The UPDATE will from time to time feature guest editorial comments and appreciates Bryan's article this week.

One of the primary considerations when shopping for new products --- appliances, cars --- is the sort of guarantee that accompanies the purchase. The entire notion of guarantees is unsettling. Many of our current pieces of art and implements of work are meant for temporary use only.

A Maori delegation honored us with a visit this week. Their pause at the Polynesian Cultural Center was one step on a journey to unveil a collection of artifacts carved, woven, and painted by their ancestors. Not one artifact carries a guarantee with it. Each peice continues to pulse fresh breath many hundreds of years after its origin.

Even as the artifacts live so will the Maori culture live. There is a permanence strongly rooted in the foundation of implements used by one's predecessors. The heartbeat of these artifacts generates cultural light through New Zealand as three separate delegations assemble to collectively carry Maori pride to the opening of exhibits.

The artifacts generate cultural light through Laie as a large group assembles to greet the honored Maoris. That light stretched its fingers into the TVA chapel during rehearsals. Those rehearsals carried an aura of strength - dignity - solidity - purpose. The pound of the poi easily melted away 2½ hours of rehearsal time.

The glow of cultural light crystallizes in Tommy Taurima while he writes music and instructs. Embers glow in the eyes of young learners as they hold eagerly to each scrap of kindling.

The light of the artifacts edifies new eyes with respect for a culture endowed with such tenacity and a core of uninterrupted power.

At home, on a shelf in my bedroom, is a bowl filled with guarantees for tape recorders, can openers, and irons which are rusted, warped, and battered beyond function. The guarantees speak strongly in a salient voice of the temporary nature of modern society.

Images are rendered of an exhibit centuries in the future of glass cases filled with pieces of paper---no artifacts, no great works of art --- only guarantees!

ANNOUNCEMENT

Effective March 1, 1985, the Polynesian Cultural Center will open its gates at 11:30am, announced the administration this week. The change will affect only the Shop Polynesia and the snack bar areas, and the villages will continue to open at 1:45 when the matinee show finishes.

CALENDAR

Friday, 1

Deep Fried Chicken w/gravy
Mashed Potatoes--Rice
Seasoned Mixed Veg.
Drink

Have a GREAT weekend!!!

Saturday, 2

Beef Pot Pie
Seasoned Corn
Steamed Rice
Drink

Mow your neighbor's lawn

Monday, 4

Roast Beef, Natural Gravy
Mashed Potatoes--Rice
Seasoned Hot Veg.
Drink

Start the week with a grin...

Tuesday, 5

Shoyu Chicken
Steamed Rice
Seasoned Peas and Carrots
Drink

Take your Mother to lunch

Wednesday, 6

Pork Chop Suey
Steamed Rice
Tossed Green Salad
Thousand Island Dressing
Drink

Write a poem to your LOVE

Thursday 7

Meat Loaf w/tomato gravy
Steamed Rice
Buttered Whole Corn
Drink

Think of Happy things...

Friday, 8

BBQ Chicken
Steamed Rice
Mixed Veg.
Drink

Payday!!!Spend it all...