



POLYNESIAN CULTURAL CENTER

UPDATE '86

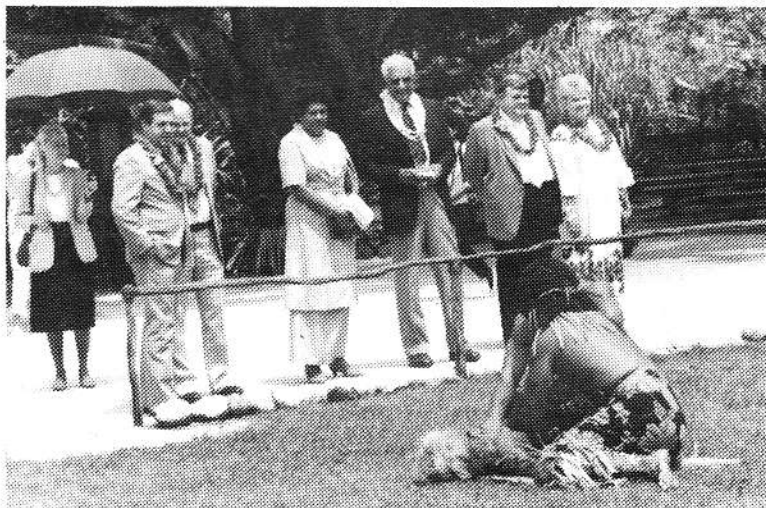
Employee Newsletter

Monday, April 7, 1986

Head Of State Gifts Canoe

The dedication and official handing over of the "Camakau" to the Polynesian Cultural Center by the Fijian Prime Minister Ratu Sir Kamisese Mara, took place on the 24th of March, 1986.

The Prime Minister, his wife and son, were in attendance along with Ralph G. Rodgers Jr. and Sister Rodgers, President Jeffrey Holland of BYU Provo, President and Sister Elliot Cameron, President Eric B. Shumway, the Center Vice Presidents, Jerry Loveland of the Institute for Polynesian Studies, and the Fijian Club Choir.



It was a gorgeous day for such an event. The guests and their hosts arrived at the Marketplace by canoe after touring the Center. They were greeted by the Fijian Choir singing, and Cy Bridges welcoming them and conducting the program. President Holland and President Rodgers both gave remarks with the remainder of the time given to Ratu Mara.

Ratu Mara spoke of how the people of Fiji watched with pride as the Hawaiian Hokule'a completed its successful voyage, saying that it was a "unique re-creation of the technical skill, navigation expertise, and sheer courage of their ancestors." He stated that he felt a great deal of pride now because "the Camakau" is the product of a living tradition.

He told those present that the people of the Lau Islands in Fiji are moving into the modern world but are managing to keep the valuable aspects of their traditional culture. The making of this type of canoe would be valuable indeed since it is a form of transport that doesn't need imported fuel to run.

This canoe has become a symbol of the ancient relationship between Hawaii and Fiji.

The program concluded with a luncheon in the Samoan Fale and the presenting of gifts by each village to the Prime Minister and his party. •



After-Dinner Hot Drink And Pastries

In response to constant guest requests for a hot drink at dinner time, management recently approved renovation of the old information booth located near the whaling wall and Laie Tours terminal.

When the job is completed the concessions staff will serve a variety of hot drinks and small pastries and they expect most of their sales to come out of the after-dinner crowd.

Patio-type furniture in keeping with other guest areas is on order, and electrical plumbing, and some carpentry work is underway. Vernice Pere, Vice President over the Concessions area is pleased that another outlet is available to serve the guests.

"The number one request we get during the dinner is for a hot drink, so we're very glad to satisfy our guests' needs in this way."

General Manager Awards

During the month of March, four employees received letters of appreciation along with twenty-five dollars from the Center's General Manager. They are: Mary Redeira, John Nauahi, Tony Hai-ku, and Lea Yatlee.

The letters were signed by both President Rodgers and Magi Keil (Senior Vice President over their respective departments).

These employees are very valuable to the Center and are an important part of what makes the Center such a successful operation.

Security Reminder To Employees

Employees are reminded to use Gate 11 and not the front entrance at Reservations to enter the center. Security will be enforcing this as of today.

New Inservice Program For Employees

The First Aid Department is pleased to announce the beginning of an inservice program for PCC employees. Every month we will be presenting a different topic on different days and times to accommodate your busy schedules.

HIGH BLOOD PRESSURE will be the topic for the month of April. The presentations will be held in the band room at these dates and times:

- *Sat. April 12th, 8-9am
- *Thurs. April 17th, 2-3pm
- *Wed. April 23rd, 9-10pm
- *Tues. April 29th, 12-1pm

The presentations will last 1 hour and will include blood pressure checks. So please plan your schedule to include this FUN and informative hour with us. See you there. CHRISTINE JENSEN
First Aid Supervisor

**HIGH
BLOOD
PRESSURE!**



**HIGH BLOOD PRESSURE
CAN BE CONTROLLED.**

Snack Bar Accepts The Challenge

Along with the new 1986 changes in ticket sales came new challenges for the Center. The Snack Bar and Concessions departments were directly affected because now every guest that visits the Center buys a meal in the Gateway Restaurant. So these departments stand to lose a lot of revenue.

Center management challenged these departments to make one and a half million dollars this year in sales. Since these areas would lose money for not serving meals they came up with new products to increase their revenue. These include scrumptious chocolate covered bananas, hot Churros (a foot long donut rolled in sugar and cinnamon), Giant Pretzels, and everyone's favorite -- Haagen Daas ice cream which is sold in little tubs.

These novelty items have been a tremendous success and these departments are well ahead of their yearly goal.



Color Purple On Stage With PCC

The Polynesian Cultural Center recently gained terrific publicity from a talk show that is ranked #1 in Chicago. It's called 'The Oprah Winfrey Show'; it is nationally syndicated and is shown in eighteen other television markets throughout the nation.

Oprah Winfrey is the acclaimed actress who received an Oscar nomination for her performance as 'Sophia' in the movie 'The Color Purple'. She brought her show to Hawaii to film two programs here.

One of these programs was filmed at the Hyatt Regency Hotel and included a fire knife dance performed by the Centers own Sielu Avea and his brother Junior. Sielu and Junior amazed the crowd with their combo routine. Making it a real star studded affair.



Junior, 'Smash', Sielu, Oprah Winfrey, Pulefano, and Tehina posed for fans at the Hyatt Regency Hotel in Waikiki.



Sielu and Junior perform for Chicago's most popular talk show. They amaze the crowd with their original fire knife dance combo.



Employees Go First Class

There's a whole lot more to do these days and a lot more places to do it -- if you're going to the Employee Center that is. Everything from magazines to a color t.v., beautiful plants to great new furniture. There's even more to eat! A brand new salad bar for those lite eaters or ice cream, soda, hot dogs, nachos, and turnovers for the rest of us. And of course, there's a genuine jukebox to play some tunes -- what more could you want?

EXECUTIVE NOTES

Lately it seems that some people have criticized the decisions management has had to make on various issues which regularly face the company. Various individuals sometimes feel that the executive committee is either uninformed or not firm enough in solving issues or too judgemental in its procedures.

What is difficult for some people to perceive is that a decision is never isolated but must always be viewed as to how it will affect other related questions. I like to think of a jig-saw puzzle. Anyone can make a start anywhere they like and pick up a few pieces and fit them together.

At some point there will be several individuals, each with a little piece of the picture and every now and then one of them finds another piece that expands their portion -- their view -- of the bigger picture. If an individual's job is simply to work within one village or function, he will be able to see to the edges of his responsibility.

Management sees more of it because it has responsibility for a larger portion. By pooling our efforts in committee we increase our view of the completed picture. Executive Committee looks over the whole thing noting which corners fit into which parts and seeing the places that need ragged edges fixed.

When this committee makes a decision it is with full knowledge as to the effect that decision will have on the big picture. For someone working away in a corner of a village or office that decision may seem unrelated to their area. If it were possible to walk every employee through every decision made at this level we would all be able to see the big picture and the reason why that particular decision was made.

Personally I have been glad that I didn't have the responsibility to make some decisions that the General Manager or members of our Board of Directors have had to make. Decision-making is a high risk activity! Making easy decisions isn't any big deal. It's the people who can make tough decisions and do so prayerfully and wisely that are a company's greatest asset.

CALENDAR

Tuesday 8th

Italian Spagetti, Roast Pork w/gravy, garlic bread, mixed veges., drink

Wednesday 9th

Braised Beef Tips, Pizza, oven brown potatoes, coleslaw salad, drink

Thursday 10th

Hamburger Steak w/brown gravy, Beef Broccoli, three bean salad, steamed rice, drink

Friday 11th

Roast Chicken w/gravy, Teriyaki Pork, coleslaw salad, rice, drink

Saturday 12th

Salisbury Steak, Chili Frank, potato salad, dinner roll, mixed vegetables, drink

Monday 14th

Pork Chop Suey, Breaded Pork w/brown gravy, rice, tossed salad w/1000 Island dressing, drink

Tuesday 15th

Baked Lasagna, Sweet & Sour Spareribs, rice, garlic bread, mixed vegetables, drink

Wednesday 16th

Kalua Pig, BBQ Chicken, rice, peas and carrots, drink

Thursday 17th

Baked Meat Loaf, Chicken Stew, rice, corn, drink

Friday 18th

Roast Beef w/gravy, Deep Fried Mahi, scalloped potato, seasoned corn, tartar sauce, drink