



## Governor Waihee Hosts Awards

It was a particular honor for the Center this past Saturday to have Hawaii State Governor George Waihee graciously agree to co-host the first annual Sterling Scholar Awards program.

Channel 2's anchorwoman Emme Tomimbang put the finalists at ease with pre-broadcast rehearsals in which she learned how to pronounce each name correctly and coached the students on how to overcome their nervousness, relax and smile at the right camera.

Center crews began the night before to set the stage, construct backdrops, and arrange orchids and greenery for the television broadcast. General Manager Ralph Rodgers, on hands and knees, outlined the Sterling Scholar



logo with a blue felt pen he had borrowed from Sione Pasi. On channel 2 that night the stage, students and logo all looked impressive.

The governor arrived late for the taping after driving from Honolulu but was a gracious co-host with Emme. He left immediately afterwards for the airport

and Maui where the evening news that night carried footage of him golfing with Japan's Prime Minister Nakasone.

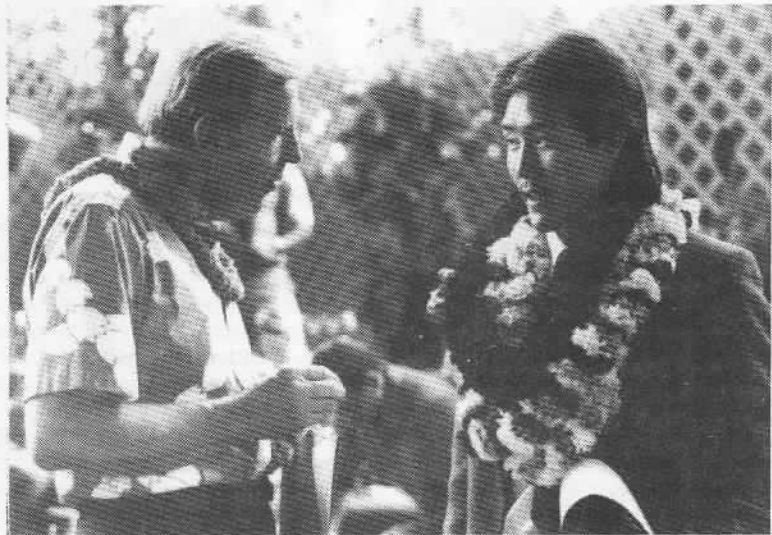
President Rodgers expressed thanks that the governor supported this program and scholarship in this state to the extent that he would commit valuable time to serve in this capacity.

## Board Members Visit

While we are used to seeing Hawaii Temple President Arthur Haycock on our grounds, we don't often have the opportunity of having other members of our Board of Directors with us.

This week Brothers F. William Gay and George Q. Cannon are also visiting and involved in future planning meetings with General Manager Ralph Rodgers and other members of executive management.

All three Board members attended the recent Sterling Scholar awards program hosted by Governor Waihee in the Pacific Pavilion and were impressed by the academic calibre of the finalists and



also by the excellent media coverage and subsequent PR the Center earned in the event.

Both Board members expressed the feeling that it was a feather in the

Center's cap to have had the governor participate with us in the awards program and hope that we will continue to enjoy this kind of support from local government.



---

## Sterling Scholars Study Polynesia

---

Thursday April 30 was an evening of "homework" unique for 100 young student finalists in the Center's Sterling Scholar awards program.

Greeted onto the Maori Village marae with traditional wero, the group feasted Polynesian-style on it's first taste of palusami, Tahitian raw fish, trifle and other island favorites.

President Rodgers presented a narrative lecture on Polynesia assisted by the Center's promotional team in vivid costumes who impressed the group with their presentations of cultural dance and exuberance.

Inviting the students to follow him, President Rodgers led them through torch-lit pathways to the canoe landing for a moonlight canoe tour complete with villagers at the lagoon's edge singing and dancing by firelight.

By the time the group climbed on board their tram for the return to the dorms for the night it had been an evening full of new learning and unique experience, and Polynesia had become a source of new knowledge for them.





---

## Hawaii's Twelve Outstanding Seniors

---

On Saturday, May 2nd, twelve outstanding Hawaii seniors emerged as the state's first Sterling Scholar Award recipients.

The awards presentation was taped live for delayed broadcast by KITV Channel 4 on the grounds of the Polynesian Cultural Center. The one hour program, which aired at 7 p.m. Saturday evening, was hosted by Governor John Waihee and KITV anchorwoman, Emme Tommimbang.

Four students, representing 3 Neighbor Island high schools, and 8 seniors, hailing from 7 Oahu high schools, placed first among 76 district finalists. In addition to the 12 first place winners, two runners-up per category were also chosen.

The Sterling Scholars were selected by a panel of three distinguished judges in each of 12 academic award programs. The judges – representing the private sector, the academic community, and a joint selection by the

Department of Education and the Hawaii Association of Independent Schools – based their selections on their review of the individual's portfolios, exhibits or demonstrations where applicable, as well as on 15-minute personal interview sessions per student.

All of the Sterling Scholar 76 finalists received a sterling silver pin, tastefully designed with the program logo, and an embossed Sterling Scholar certificate.

In addition to their scholarship, each first place winner also received an elegant koa and crystal trophy designed by Honolulu graphic designer, Clarence Lee.

The first annual Sterling Scholar Awards was presented by the Polynesian Cultural Center and The Honolulu Advertiser, and KITV. The program is Hawaii's most comprehensive and prestigious high school academic awards program to publicly recognize and encourage the pursuit of excellence in scholarship, leadership, and service. It is open to all seniors in good standing.

The following students placed first in their respective category. Each receives an unencumbered \$1,000 academic scholarship from the Polynesian Cultural Center.

### **General Scholarship**

Laurie S. Hiyakumoto  
Maui High Schools

### **English**

Marli Higa  
Iolani School

**Industrial Arts**  
Dalmacio Cua  
Mililani High School

**Speech/Drama**  
Laurie Bush  
Kailua High School

**Business Education**  
Jeffrey Chun  
Damien High School

**Foreign Language**  
Elizabeth Baltzan  
Hawaii School for Girls

**Mathematics**  
Kristi Fukami  
Baldwin High School

**Homemaking**  
Lisa K. Hashimoto  
Baldwin High School

**Science**  
Todd Horiuchi  
Hilo High School

**Music**  
Glenn Arakawa  
Waianae High School

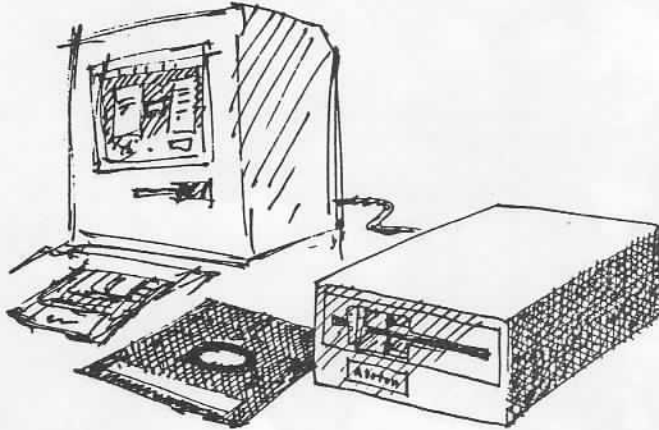
**Social Science**  
Darin K. Uesugi  
Leilehua High School

**Visual Arts**  
Jessica B. Sawyer  
Iolani School



# Computer

o  
r  
n  
e  
r



**Tip For The Week**  
"Using the Date and Time"  
by Lei Cummings

## Symphony

To have the date change every time you enter your spreadsheet type in the formula  $\frac{5}{6}$ NOW at the desired position. You can format your date pressing F10 Format, Date, and choosing the date you desire.

## WordPerfect

WordPerfect will also install a 24-hour date and time for your documents. By pressing Shift-F5, a date menu will appear. Now, you can format the date and time just as you do in Symphony by first going to 2 for Format. Otherwise, simply press number 3 for Insert Function at the area you'd like the date to appear and you'll have your 24-hour date.

In Format, you can choose the way you'd like the Date to appear such as having either the Day Month Year (03 April 1987), or having the Month Day, Year (March 16, 1987).

(Note: If you want a comma in your date, you'll have to declare it in your format. WordPerfect shows you many different styles for displaying the date.)

To insert just the current date, choose number 1 for Insert Text, and according to the format you've chosen you'll have a line of text appear.

## Speed Limit Notice

Notice is given to all employees that the speed limit on the road passing the employee gate is 5 mph.

Some vehicles are speeding past this gate after the night show. You are reminded that there are no side-walks in that area and that many employees walk along the road at night.

License numbers will be taken of any vehicle exceeding this speed limit and the driver will lose employee parking privileges.

Executive Committee

## "Double Show" Phone Calls

The reservations office is getting an overload of phone calls -- causing us to place many full paying guests "on hold."

I would like the employees of the various departments to call their secretary directly...or the main PCC switchboard (293-3000). This would be extremely helpful to the telephone reservationists.

If you have any questions on wording for your article, please call me or Janelle Carlson.

Thanks!  
Fia Mau

## Employee Menu

### Friday 8

Beef Curry Stew, Stir Fry Shoyu Chicken, steamed rice, tossed salad w/dressing, drink

### Saturday 9

Baked Meatloaf w/tomato sauce, pizza, steamed rice, seasoned peas and carrots, drink

### Monday 11

Breaded Pork, Beef Pot Pie w/biscuits, steamed rice, coleslaw salad, drink

### Tuesday 12

Beef Tomato, Teriyaki wings or drumsticks, steamed rice, seasoned corn, drink

### Wednesday 13

Mushroom Chicken, Kalua Pig, steamed rice, seasoned mixed vegetables, drink

### Thursday 14

Pot Roast Beef w/gravy, baked mahi w/tartar sauce, steamed rice, tossed salad w/dressing, drink

### Friday 15

Laulau, Lomilomi salmon, Chicken Long Rice, poi, steamed rice, drink, pineapple salad

## Local Teachers Thanked

Teachers from the local community schools were pleasantly surprised last week to receive an invitation from President Rodgers to an evening of food and entertainment. Even more exciting were the checks for several thousand dollars he presented from the Board of Directors and management of PCC.

Paying tribute to their service and dedication to the youth of our community, he awarded Kahuku High School \$5,000, Kahuku PTSA \$2,000 and Kahuku Elementary School \$500.

Both Laie Elementary School and Hauula School each received checks for \$1,500 while their PTSA's received \$500 each.

The faculties, staffs, and PTSA members were treated to a special menu of buffet foods prepared by the Gateway kitchen staff and served in the Lanai area. Some 450 people attended, and although the evening was windy and cold, it was one of much warmth and goodwill.