



Polynesian Cultural Center

# UPDATE '90

Employee Newsletter

Friday, May 11, 1990



## *Special Mother's Day Breakfast*

*Saturday  
May 12, 1990  
Ali'i Luau*

*Pick Up Your Ticket Today!*

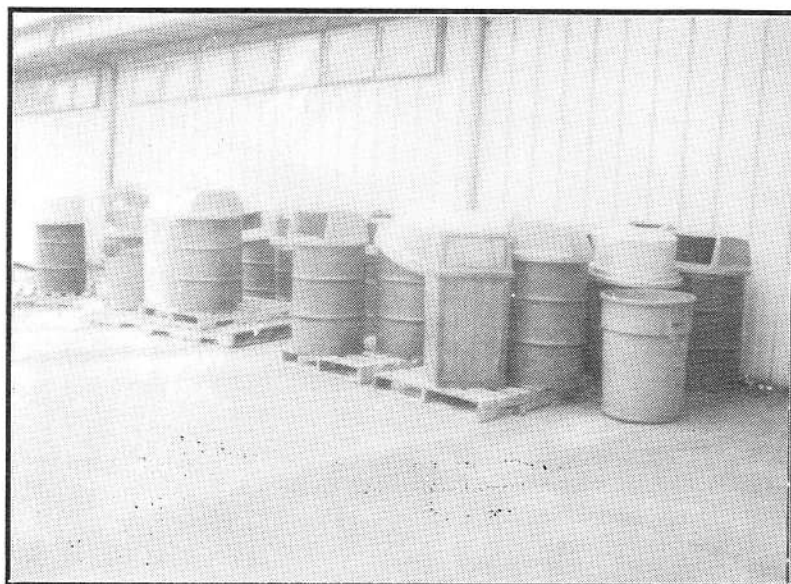
## Annual Local School Donations

Principals and PTSA Presidents from the four local schools; Laie Elementary, Kahuku High, Kahuku Elementary, and Hauula Elementary; gathered for a luncheon with President & Sister Christensen on Wednesday, May 9, 1990. The luncheon was held



to show the Center's continued support of the local educational community. Donations were presented to Principal Gilbert Hatter of Laie Elementary School, Ron Jackson PTSA President; Principal Lea Albert, Kahuku High School, Caryoln Hannemann PTSA President; Principal Frank Kalama, Kahuku Elementary School, Diane Aiu PTSA President; Principal Jean Izu, Hauula Elementary, Suzette Silva PTSA President.

## Out With the Old



If you noticed something new in the Center and it resembles trash receptacles, don't bother wiping the disbelief from your eyes. It is true that they are here to stay.

The new Coral receptacles are just another example of the many changes occurring in the Center to upgrade appearance and maintain professionalism.

The project began about three months ago in an attempt to change the image from the days of brown metal barrels with bright orange lids. The receptacles have and will always be an important fixture on the grounds.

## In with the New



The units were purchased from Concrete Creations of Hawaii who worked very closely with us to develop this rather large receptacle. They are the only company that manufactures coral items locally. Each unit weighs approximately 400 pounds and will fit nicely as a permanent fixture.

We hope that all of the employees in the Center will continue to help us care for these new units. It was through the efforts of all of you that enabled us to acquire them.

## Theater Corner

# Polynesia in Korea

submitted by Jack Uale

Recently I had the pleasure of accompanying our Theater Promotional Team to the Republic of South Korea. Not only were there Polynesian dancing flawlessly outstanding through 7 major 1 1/2 hour shows and assorted number of 30 minute shows, but I was also privileged to see a side of our young people I've seldom seen before.

After we completed a very rigid in country immigration and custom clearing and because there was no baggage handlers or red cap service, our kids, bodily, with just a few push carts, carried every piece of item from one point of the terminal to the local Domestic flight area from our in country flight to the Seaport of resort city of Pusan. Among the bulk items, were over 30 pieces of luggage, 25 cases of pineapple, 15 cases of assorted brochures, macadamia nuts, passion and guava can juices, 4 costume trunks, guitars, toeres, oversize cardboard boxes of coconut and coconut leaves for weaving and other demonstration items. Many of the items belonged to the other tourist businesses like the Hyatt Regency, Outrigger Hotels, Waimea Falls, Sea Life Park, who were also sponsoring booths at the several Polynesian fairs with us, but had only token representatives.

It was something to behold, everyone including VP and Sister Peter Kaanapu, Osamu, Scott Bradshaw, lifting, pulling, pushing, carrying, loading and off loading our cargo at Kimpo International and also at Pusan Airport and back to Kimpo International with the wind chill factor 55 degrees.

The performance for our troops at Camp Red Cloud was memorable. One could feel the genuine appreciation of these folks. Comments like: "So much energy among the dancers," "only 3 musicians sounding like 6," "Knife Dancer #1," "dazzling costumes." After our dinner at the Officers Club, a brigadier general in charge presented us with a Certificate of Appreciation and each a coin the size of a silver dollar with the emblem and Code of Arms of the U.S. Armed Forces, Korea. They requested a tune from the cast after dinner - we stood and sang "I Am a Child of God" and "As I Have Loved You." I don't think there was a dry eye among them or us.

Truly, poi and kim chee blended deliciously this trip around.



**Special Projects**  
has  
**Interisland**  
**coupons**  
for

**Aloha Airlines**  
**only \$36.00**  
*(Cash Only)*

*No expiration date*  
**PCC Employees Only.**

Also Some Movie Tickets purchased from  
Special projects will Expire in June. Make  
sure that you use them before they expire...  
**No exchanges are allowed!**

# Quality Service Corner

Spot light on employee's view of what the 3 "Ls" of Quality Service are. . .

## LOOKING TO SERVE . . .

Avefua Pogai  
Theater Dept.

Looking to serve all people, not just the rich or the pretty face people, but the poor, the lonely, the ugly etc. . . it's having the pure love of Christ in our hearts.

Ted Guilder  
Human Resources Dept.

"... being sensitive observers. Being attentive to what's happening around us. Doing this increases our quality and enjoyment of our service. We can always create ways to serve.

## LISTENING TO SERVE . . .

Donna Mailo  
Theater Dept.

"It's listening and obeying our supervisors, and also listening to complaints from guests without being defensive.

Sonya Fesolai  
Security

"... Listening is vital to avoid misleading information especially in my job."

## LOVING TO SERVE. . .

Katherine Tolleson  
Human Resources

"... looking, listening and serving is easy when you love what you are doing and you care about those you work with. Working with John has been great!"

By Art Hannemann  
Training Consultant

## Village Operations Announces!

# Marquesas Cultural Day - May 12

The Marquesas Village workers will be celebrating their cultural week with special activities throughout the day with food preparation, weaving demonstrations, games, displays of the different stages of coconuts, fashion shows and village cultural exchanges.

## Human Resources Corner

# Employee Notes

## Hawaii Central Credit Union Benefit

If you are a member, you are eligible for a new car purchasing service called "C.U. Cars". You may be able to save hundreds or even thousands on the purchase of a new car. There are also extended warranties, tinting, paint sealant, and body moldings at big savings. (C.U. Cars is located at 4380 B Lawehana St., near Costco. If interested, give them a call at 423-8432.

## Direct Deposit Deductions

If anyone has an account (savings/loan/checking) with **OAHU ONE CREDIT UNION** located on 2219 Pauoa Road you may be interested in starting a payroll direct deposit/deduction with them. Call Valerie Grace at Human Resources ext. 3033. If there is enough interest, we will try and have them included as a payroll deduction option.

## BYU-H Guestcards

PCC Employees wishing to use facilities at BYU are encouraged to obtain a guestcard.

### 1. Community Guestcard

- Must be at least 18 years of age
- Must provide documents to verify picture. . i.d.
- Single card \$5.00
- Family card \$10.00 (parents each get one card and the children may use them)
- Must be renewed each semester
- Lost/Replacement cost \$5.00

### 2. PCC Full Time Employee

- Must be at least 18 years of age
- No charge for first card
- Verification of full-time status from PCC
- Must be renewed each semester
- Lost/Replacement cost \$5.00

### 3. (Temporary) Guest Pass

- Must be at least 18 years of age
- Must provide documents to verify picture. . i.d.
- 1 day pass \$1.00
- 1 week pass \$3.00
- Must be renewed each semester
- Lost/Replacement cost \$5.00

Cards are obtained from the BYU-H Security Office Monday-Friday 8:00a.m.-4:00p.m. Any additional questions should be directed to the BYU-H Security Office.

# Sterling Scholars Awards



## 13th Annual Western Temporary Typing Competition

The fourth annual Sterling Scholar Awards Program has selected 12 outstanding Hawaii high school seniors from an initial field of 248 entrants and 82 semi-finalists. Scholars were judged on Scholarship, Leadership, and Citizenship.

### The Categories and winners were:

**English** - Michael Quinlan - Damien Memorial

**Industrial Arts** - Fredrik Brown - McKinley High

**Speech/Drama** - Chadwick A. Ho - Damien

**Business Education** - Catherine Ibarra - Waipahu High

**Foreign Language** - Katherine T. Higashi - Iolani

**Mathematics** - Shari-Lynn Sawa - Mililani High

**Homemaking** - Kathy Suzuki - Maui High

**Science** - Ryan Iwasaka - Baldwin High

**Music** - Taran Erickson - Kahuku High

**Social Science** - Tami Jane Chun - Moanalua High

**Visual Arts** - Chae Ho Lee - Moanalua

**General Scholar** - Gen S. Tanabe - Waialua

Each of the winners received a \$1,000 cash scholarship from the Center. Other corporations that were involved this year were: KITV 4, First Hawaiian Bank, Duty free Shoppers Limited Partnership, Aloha Airlines, Clarence Lee Design, and Pizza Hut Restaurants of Hawaii. Congratulations to Delsa Moe, Sterling Scholar Coordinator, on a well organized, well presented program.



**Muriel Tuairau, State typing champ!**

We would first like to thank all those who participated in our Western Temporary's annual typing competition on April 25th and 28th. There was a great turn out and those who were at the BYU-Hawaii Computer lab, as scheduled, received T-shirts & chocolate typewriters. The Center also sponsored the refreshments consisting of vegetable and fruit trays and cream puff sandwiches on Wednesday evening. Saturday's event was sponsored by the BYU-Hawaii Business Division who donated danishes and juice.

There were over 20 entrants from the Windward area with First place being awarded to Muriel Tuairau (aka Muriel Ryan) with a net typing speed of 111 wpm. 2nd place went to Linda Sue Arnold speeding her way at 106 wpm net and 3rd place was awarded to Carolyn McCann who typed at 91 wpm, both are from Honolulu. 4th place went to Sheri Lee Chong of Honolulu. Prizes will be announced next week when Western Temporary's manager, Sharon Nichols will be here to interview Muriel. This is the third Western Temporary sponsored competition Muriel has won.

She contributes that she owes it to her grandfather who left a great impression on her entire life and allowed her to play on all of his typewriters. (He was a typewriter repairman and locksmith). Muriel also expresses her thanks to her three children Chris, Tony, and Debra as well as Kim Nae'ole & her mom, Poua Beaver.

A deep gratitude is also expressed to David Hannemann, Guest Services Vice-President, for his endless support and belief in his secretary.

## Village Corner

# MAY DAY!

The Villages were very busy this past week with the May Day celebration .

One of the highlights of the May Day celebration for the villages was the opportunity to have our own version of the Rose Bowl Parade here on our own lagoon. Each village decorated a canoe using flowers, plants, and handcrafted items.

These canoes were featured in a series of canoe parades held on Saturday, May 5th. During one of the parades, judges observed each float and at the Village Finale the winners were announced. The competition was so tough that a tie was declared between the Fijian Canoe and the Samoan cane. (pictured right).

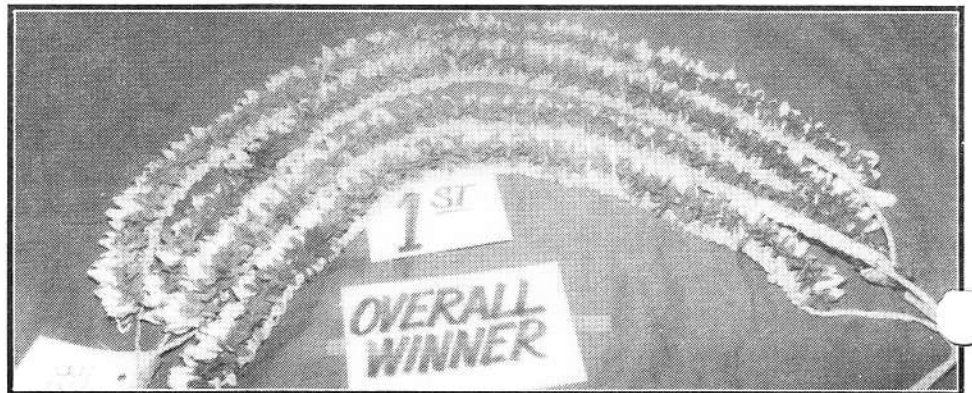
Part of the celebration included a lei making contest. More than 30 leis were entered in this competition. According to one of the three judges, the competition was fierce. The leis were crafted by many Center workers, there were also entrants from the community. First Place overall went to the entry from our own Tongan Village. (Pictured Right)

Congratulations!

A big mahalo to all who participated in the May Day celebration. Many positive comments were heard both at the schoolhouse where the leis were on display, and during the canoe parade about how beautifully the canoes were decorated.



***A First Place tie between the Fijian canoe (above) and Samoan (below) for the most decorated canoe.***



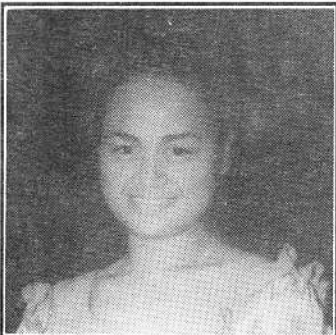
## Gateway Corner

# Employee Notes

Patsy Mauga has received her mission call to

Japan and we're all happy for her though she will be missed!

Good Luck to you Patsy in spreading the word.



Also, Aloha Oe to our own token palagi in the office, Leslie Benzmilller!! Leslie has already left us (she dares to) to return to the mainland to utilize her

talents & skills doing other things. She will be missed

by the office gang but we wish you luck in your future endeavors. . our loss will be someone else's gain! She's been with us since January 1985. Thanks Les for sharing your talents with us!



Aloha Oe to the following employees:

Pareee, Niusa, Kim, Cindy, Mele, Holly, Ron, Ellen & Kolu. Thanks for hanging in there with us.

**Special Get Well wishes to our boss, Max! He is at home recovering from knee surgery. Take all the time you need to recuperate, we'll hold the fort down till your return.**

# EMPLOYEE MENU

## Friday, May 11

Teriyaki Wings  
& Drumsticks  
Mixed Veg.  
Steamed Rice  
Cold Drink

## Monday, May 21

Teriyaki Wings  
& Drumsticks  
Mixed Veg.  
Steamed Rice  
Cold Drink

## Monday, May 14

Deep Fry Chicken  
W/ Gravy  
Buttered Corn  
Steamed Rice  
Cold Drink

## Tuesday, May 22

Salisbury Steak  
w/onion & gravy  
Seasoned Corn  
Steamed Rice  
Cold Drink

## Tuesday, May 15

Beef Curry Stew  
Potato Salad  
Steamed Rice  
Cold Drink

## Wednesday, May 23

Sandwiches  
Ham & Cheese. Tuna  
Soup/Salad  
Cold Drink

## Wednesday, May 16

Fried Hoki Fish  
W/Tartar Sauce  
Tossed Salad  
Steamed Rice  
Cold Drink

## Thursday, May 24

Pork Chop Suey  
Straw/Parfait  
Steamed Rice  
Cold Drink

## Thursday, May 17

BBQ Chicken  
Peas & Carrots  
Steamed Rice  
Cold Drink

## Friday, May 25




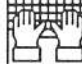
Chicken Curry Stew  
Macaroni Salad  
Steamed Rice  
Cold Drink

## Friday, May 18

Teriyaki Pork  
w/ Natural Sauce  
Seasoned Peas  
Steamed Rice  
Cold Drink

\*\* This menu is subject to change without prior notice.

## May MIS Training

Sunday	Monday	Tuesday	Wednesday	Thursday	Friday	Saturday
<b>Mother's Day</b>  13	14	9:00am Introduction to MacWrite /MacPaint  15	16	17	18	19
20	21	9:00 Introduction to Lotus Agenda  22	23	24	25	26
27	MEMORIAL DAY	9:00 PSI FYI/MB Mailbox  29	30	31		

## Trivia

### Fill in the blanks

1. Greeting Word for Maoris : \_\_\_\_\_
2. Hawaiian word meaning "Forward" or "Onward"  
\_\_\_\_\_
3. Popular weaved item: \_\_\_\_\_
4. Abbreviation, form for Personnel changes \_\_\_\_\_
5. Major project going on in PCC: \_\_\_\_\_
- 6: Accounts Payable Supervisor, first name:  
\_\_\_\_\_
7. Technical Services secretary: \_\_\_\_\_
8. Fijian Lei  
\_\_\_\_\_
- 9 Special Holiday this weekend.  
\_\_\_\_\_
10. Identify this little indian.  
\_\_\_\_\_



### Rules

- \* First Prize - Two consolidated Movie Theater Tickets
- \* Second Prize - 1 Box of Chocolate Macadamia Nuts
- \* Open to all current PCC Employees
- \* Entries must be mailed/turned in to Special Projects by **Monday at 5:00 p.m.**
- \* Judges decisions are final.

## Trivia Results



### Congratulations!

**Syd Wheat** who works in Human Resources, shown here with her awesome orientation group (5-9-90), She was the only entrant who answered correctly all the Trivia from the last UPDATE. Syd wins two free Consolidated and a box of Chocolate covered Macadamia Nuts.

### Answers for last Trivia:

1. Name at least 5 secretaries in the Center:  
**By Verification**
2. Identify this week's mystery picture:!  
**DELSA MOE! - What a cute baby!**
3. Name at least one performer from each of the night show sections - **By Verification**
4. What two events are being held in conjunction with BYU this Saturday. **Sterling Scholar Awards, Typing Competition and State Math Bowl**
5. List at least two locations in the community that the Laie Tram tour takes our guests: **Hale Laa St., Naniloa Lp. Temple, BYU-Hawaii,**
- 6: Who is the supervisor over the Housekeeping crew? **Toiva Lake or Bob Willis**