



Gateway Workers Participate in Sterling Scholar Awards



Two of our own Gateway Employees, Lilian Crisler and Melanie Tolleson were selected as State Finalists in the recently completed Sterling Scholar Awards.

Lilian, who is the daughter of BYU-Hawaii Professor Jesse Crisler, was a finalist in the General Scholarship category. She is the valedictorian for Kahuku High. She is involved in many organizations and was also selected as a state semi-finalist in the Century III competition. She plans to attend Pamona College in California.

Melanie, was selected as a runner-up in the English category and received a \$500 scholarship. Melanie is the daughter of Kathy Tolleson, who works in the Human Resources Department. Melanie has won several awards in journalism, she was also selected as 1 of only 100 students from across the country to attend Northwestern University in an extensive journalism program last summer. She plans to attend BYU in Provo in the fall.

Both Lilian and Melanie work in the Ambassador Dining area at the Gateway Restaurant. Other Kahuku students involved in the Sterling Scholar Awards were: Esmael Mangati - Industrial Arts, Margaret Britsch - Social Science, Kathryn Safsten the Sterling Scholar winner for Home Economics.



Kahuku Seniors Lilian Crisler (left), and Melanie Tolleson (right) pose with President Christensen at the awards program.

PCC Selected for National Park Service Location Filming

Beginning in early 1992, millions of Hawaii visitors will see and hear about the Polynesian Cultural Center from an unlikely location -- the Hawaii Volcanoes National Park on the Big Island.

Two film crews from the National Park Service (which oversees all national parks and monuments) spent several days at the Center last week capturing various images of old Hawaii and Polynesia.

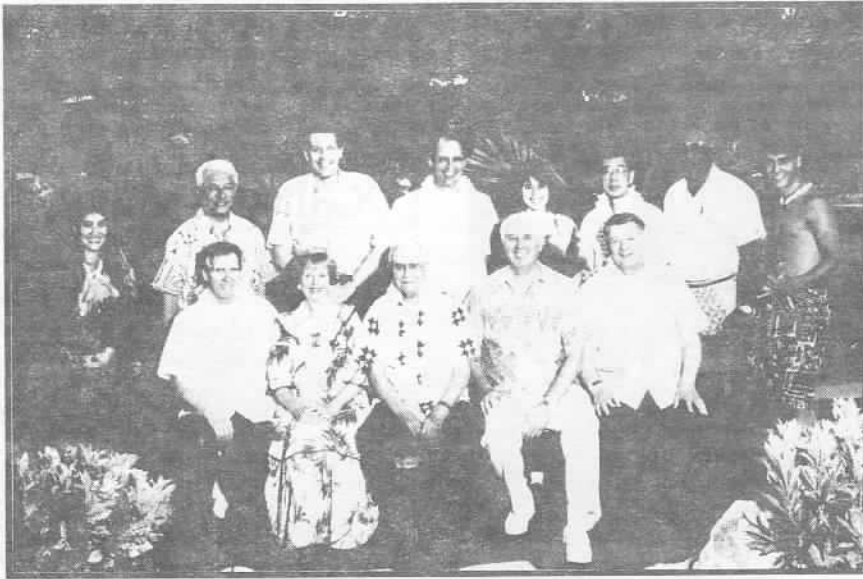
The 30 minute film they are producing replaces a film that has been shown to millions at Volcano Park's visitor center since 1962.

The original schedule was to film about six sequences at the Center, but the film producers ended up filming close to 12 separate scenes they plan to incorporate into their film.

Additionally, they also filmed PCC's front entrance sign to be included in the film -- which will provide excellent exposure for the Center.

VIP Visit by Church Leaders

The Center was pleased to welcome Elder David B. Haight, of the Quorum of Twelve Apostles, Elder Rex Pinegar, Presidency of the Seventies Quorum and Elder John Groberg, Area President, North America West Area as visitors to the Center on Saturday, May 11, 1991. The Church leaders were here in conjunction with the annual Stake President's/Leadership Training meeting.



Front: L to R Elder Rex Pinegar, Sister Christensen, Elder David B. Haight, President Christensen, Elder John Groberg. Back: L to R Network Photo hostess, Vice President T. David Hannemann, Elder Don Hallstrom, President Eric Shumway, Daughter, Elder Ho, Manase Nau, and Network Photo host.

Village Corner

Promo To Japan!

Several of the workers in the Villages will get an unusual opportunity this week as they prepare to leave for a promotional tour to Japan. The group will be leaving for Japan tomorrow, Saturday May 25th and will return June 3rd. For many it will be their first trip to Japan.

The group has been holding daily rehearsal on the May Day area next to the Schoolhouse. The group pictured below is only part of the group actually going. Cast members include: Tipa Galea'i, Valetta Jeramiah, Mark Clawson, June

Sakulsindustit,
Mele
Huakau,
Melame
Huakau,
Jesse, Semisi
Fakatava,
Tania
Mahonl, and
Nanette
Fabricius.



Happy
Landings!

HUMAN RESOURCE HOTLINE



Marriage Leave

What is Marriage Leave?

Marriage leave is designed with the intent of assisting employees who need time off for marriage preparations or actual marriage date.

How many days are allowed for Marriage Leave, and is it paid time off?

You are allowed two days off. Yes it is paid.

Who is qualified for Marriage Leave?

Only full-time forty hour (40) employees are qualified for a two day paid leave. However, the full time employee must have completed twelve (12) consecutive months of employment.

What if my wedding arrangements require more than two days?

If you have vacation days accrued you may use your vacation for the remaining days.

As a student, am I qualified for Marriage Leave?

No, however you should check with your immediate supervisor for the possibility of leave without pay.

Next Issue: Solicitation Policy

Cultural Productions Corner

"Ask Me Guides"

You may have noticed the most recent additions to the Guide Department here at the Center. These guides have a new look which stands out nicely and with good reason. We proudly re-introduce to the villages the Ask Me Guides.



Shown above are L to R: Niusa Tapusoa, Palauni MaSun, Manager, Winona Klels. Standing: Bruno Chung, Tautal Moala.

These guides have been strategically placed throughout the Center to help increase the satisfaction of all the Center's guests.

With a new and conspicuous look, these helpful and informative Ask Me Guides will stand out as a beacon catering to the needs and questions of our guests.



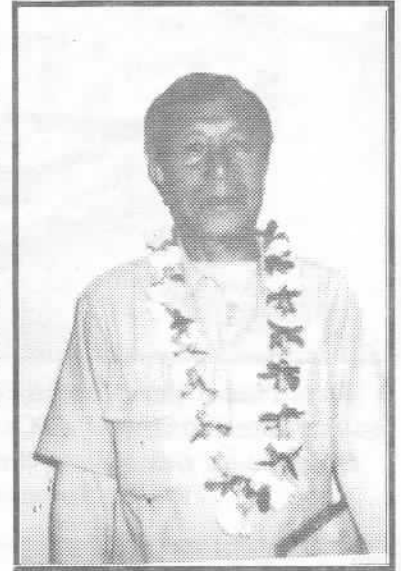
Shown at left L to R: Rose Nauta, Julia Fie'elki, and Ken Peters, who also wear the new uniform which is accented by beautifully painted hats and a six inch button which reads "How Can I Help?"

Maintenance Corner

Employees of the Month

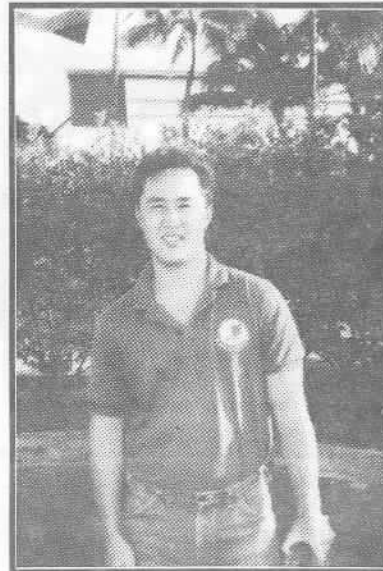
February

Eusebio Batulan was chosen as the February Employee of the Month. Eusebio works as a Landscape Gardener in the Maintenance Department. He also does the landscaping and beautification of President Christensen's home.



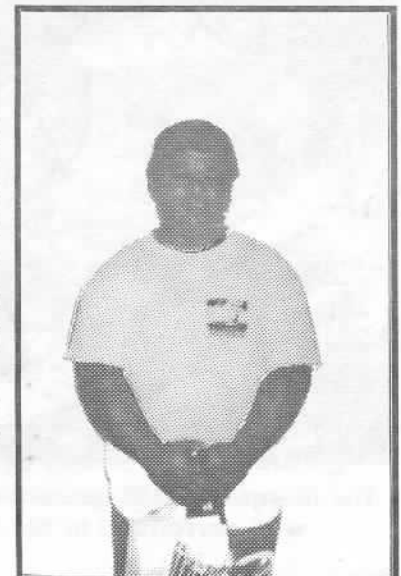
March

Todd Tamura was chosen as the March Employee of the Month. Todd works in the Receiving Department as a receiving clerk. Todd is always at work (if the waves at the beach are junk)!!!



April

Frank Kamae was chosen as the April Employee of the Month. Frank works as a Maintenance worker. Anytime you need something done, just call Frank. He'll find time to help just about anyone.

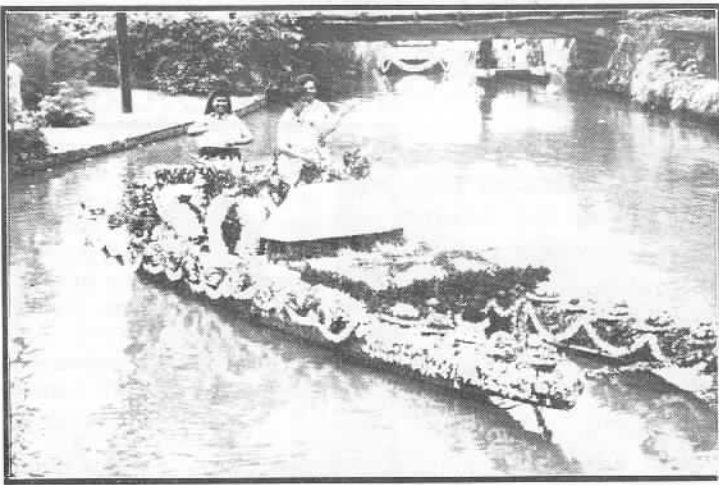


May Day Canoes

It seems as if the canoe decorating gets bigger and better each year...and this year was no exception. The final result after all the canoes passed in front of the judges, who were seated on Coconut Island, were:

1. Tongan Village
2. Hawaiian Village
3. Marquesas Village

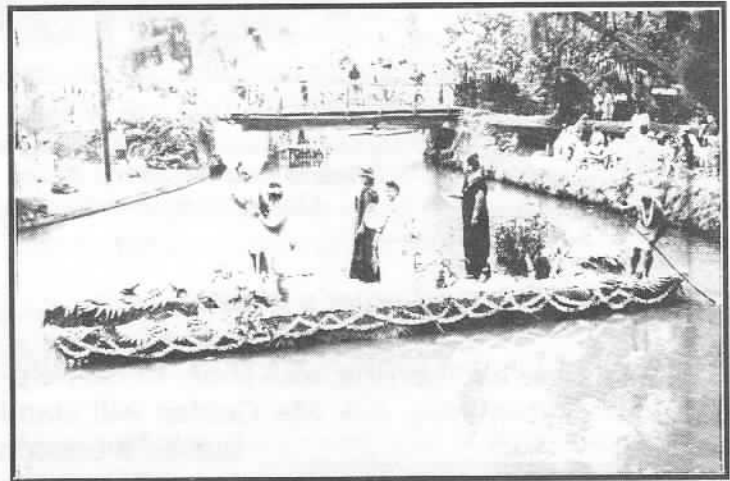
Although results were announced and sort of



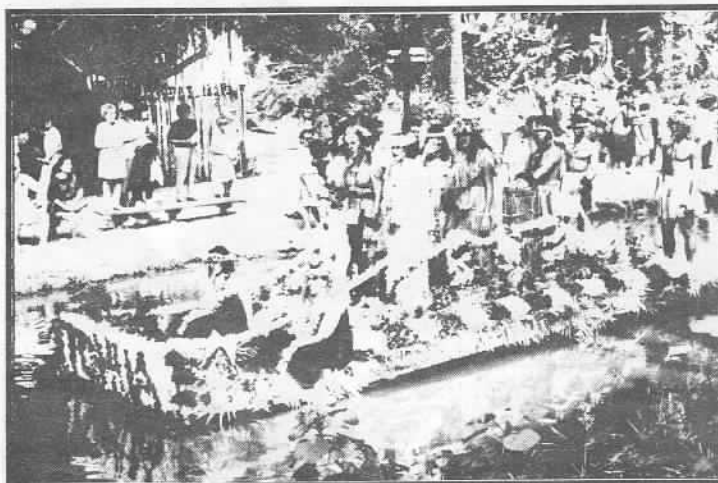
First Place went to the Tongan Village who constructed a model of Queen Salote's Summer House and decorated the whole canoe with flowers.



The Hawaiian Village canoe had a "real" volcano that even erupted...sometimes.



The Mission Village featured many different fashions of Mu'u Mu'us



The Marquesas Village canoe featured the villagers, who performed to the beat of the drums.



The Fijian Village canoe was beautifully decorated with many flowers and featured the villagers singing down the waterway.

Styles of the Isles...

a competition was held, it should be remembered that all of the villages were encouraged to participate. We all should thank the many people who worked hours and hours to meticulously place flowers, in some cases over 2,000 flowers were used.

All of the Villages are to be commended on the fine work that they accomplished. For each village it was an opportunity to grow closer and work together.

Other Village News...

On May 4, 1991 the villages held their May Day Lei Contest. The results were:

Overall Winner

Lei - Eseta Toelupe
Haku - Silina Tanuvasa

Haku (headband)

Traditional - Taulua
Creative - Mele Ongoongotau
Sophia Turaga
Beautiful - Silina Tanuvasa

Lei

Traditional - Tongan Village
Creative - Silina Tanuvasa
Beautiful - Eseta Toelupe

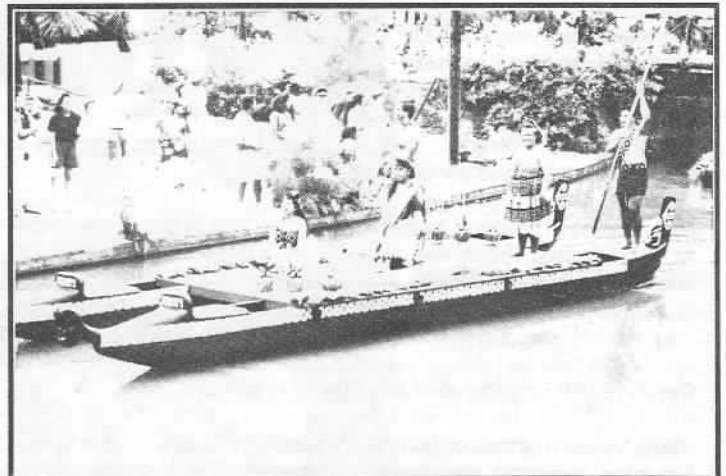
Congratulations!!!

In other village news we understand the the 18 member village drum corps that perform nightly at the umu ceremony made an appearance at the Pepsi Cola Convention at the Royal Hawaiian Hotel. The group was led by Tipa Galea'i.

Also, in the future look for Polynesian Legends to return to the village demonstrations.



The Tahitian Village canoe featured many different forms of the "French Polynesian" look.



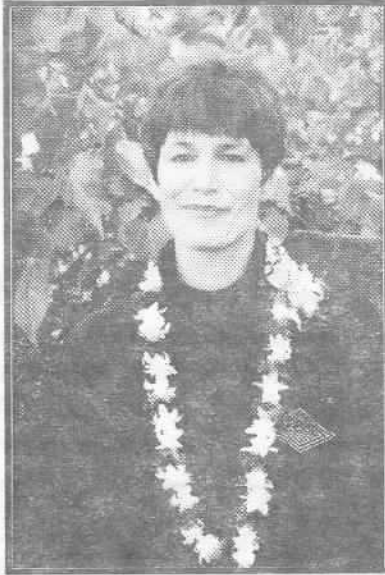
The Maori Village canoe featured the villagers singing down the waterway.



The Samoan Village canoe was a floating tribute to a missing friend

Security Corner Employee of the Month!

SueAnn Pualoa, PCC Security Officer, has been chosen Employee of the Month for April 1991. This special announcement was made on Saturday, May 11, 1991 in the monthly department meeting which Vice President Magi Keil was presiding.



Mrs. Pualoa is a very dedicated employee. She executes assignments given to her with tact and wisdom. She is an individual who is always willing to accept and complete her assignments given her by her supervisor and manager. She is very capable person who types out reports and memos when the going gets tough. You can always recognize SueAnn by her sweet smile and pleasant attitude.

Mrs. Pualoa is married to Richard Pualoa and is the proud mother of two sons, Tyson and Brandon and lives on Moana Street. She has been a dispatcher with Security since January 16, 1984. SueAnn was presented on Saturday with a \$25.00 cash award, a certificate, a couple of consolidated movie tickets, a lei, and her name will be placed on the new plaque which will honor the all future Employee of the Month recipients.

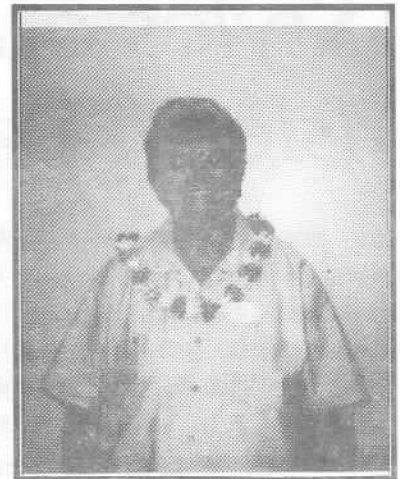
Many other matters of business were conducted at this special Saturday morning meeting. Afterward, the Security officers took time to take a group photo with the First Aid crew.



Front L to R: Losiani Kaufusi, Manager Newman Lake, Alalva'a Leapal, Sonya Fesolal, Moana Ofahegnague, Della Fauvao, Shawn Tamasaka, Silvia Brown, Bill Ernestburg, Tigi Tapusoa, Don Ulva'a, Silongo Samani
Back L to R: Warren Waddell, Scott Carpenter, Sonny Alono, Nuku Kioa, Sue Pualoa, Liufau Tuifua, Mark Gray, Conrad Setoki

Not pictured: Pricilla Mataele, Chester Manaea, Veamon Lautaha

Operations Corner Employee Notes



Congratulations to **HANNAH KAINA** of the Custodial Day shift for being chosen the Operations Department April Employee of the Month.

Hannah is a full-time Custodian and is known among the department as the Supervisor's "Right Hand Lady". She has worked for the Center since 1973. Hannah plays vital role in the Day Shift duties making sure the supply closets are well stocked, aids the Supervisor and crew whenever needed and still finds time to fulfill her regular assignments. Hannah is never tardy to work and has an excellent attendance record. She is an asset to the crew and everyone is quite appreciative of her. Congratulations again to Hannah for being chosen the Employee of the Month.

New Employees

We would also like to welcome the following employees to the Operations Department:

<u>Custodial</u>	<u>Grounds</u>
Mata Manapori	Eldon Uli'i

We're happy to have you on our staff

Coming Soon!

Watch for the Custodians and Groundskeepers taking on a "New Look" Coming Monday, May 27, 1991.

Thank You!

The mothers of the Maintenance, Operations, and Security Departments would like to thank our Vice President, Magi Keil, for recognizing us for Mothers Day! Thank you for the flowers and the sweets!

Babies!



10 SOUTH MAIN STREET • P.O. BOX 4520 • SALT LAKE CITY, UTAH 84148
TELEPHONE: (801) 575-0484 • TOLL FREE: 1-800-777-0484

DATE: May 7, 1991
TO: All Hawaii Plan B Participants
FROM: Deseret Healthcare
SUBJECT: Hawaii Prescription Drug Program

Effective May 15, 1991, all Longs Drug Stores will no longer be participating in Deseret Healthcare's Prescription Drug Program for Plan B participants. Please have your prescriptions filled at any of the other participating pharmacies listed below, or from any participating PAID pharmacy.

AIEA		IPC Pharmacy / LMC.....1712 Lilie St.
Ales Medical Pharmacy.....99 128 Ales Heights D	IPC Pharmacy / HCN MED.....550 S. Beretania St.	Medicine Man, Inc.....1113 Kapahula Ave.
IPC Pharmacy / Peairidge.....89 150 Kaonohi S	Pay 'N Save 109.....1505 Dillingham Blvd.	Pay 'N Save 112.....2220 S. King St.
Pay 'N Save 113.....99-950a Kaahumanu St.	Pay 'N Save 59.....848 Ala Liliuol St.	Pillbox Pharmacy.....1133 11th Ave.
Pharmacare II.....99 1247 Iwaena St.	Professional Plaza Pharmacy.....1520 Lilie St. Suite 2	Sav Mor Drugs.....2295 N. King St.
Straub Pharmacy Ales.....98 1247 Kaahumanu St.	Thrifty Drugs #9.....7192 Kalendianole Hwy.	Times Pharmacy #11.....1425 Lilie St.
Times Pharmacy #9.....99-115 Ales Heights Dr.	Times Pharmacy #17.....333 Ward Ave.	Times Pharmacy #16.....1199 Dillingham Blvd.
HALEIWA		Times Pharmacy #2.....1173 21 First Ave.
Haleiwa Pharmacy.....66 125 Kamahameha Hwy.	Times Pharmacy #8.....1290 S. Beretania St.	
HANAPEPE		KAHUKU
Westside Pharmacy.....P.O. Box 249	North Shore Rx Pharmacy.....P.O. Box 91	
HAULUA		KAHULUI
Pay 'N Save 110.....54-316 Kamahameha Hwy.	Crafts Drug Inc.....275 Kaahumanu Ave., #1028	Maul Clinic Pharmacy.....53 Puunene Ave.
HILO		Pay 'N Save 122.....200 E. Kamahameha Ave.
Hilo Medical Group Pharmacy...1292 Walaruaeue A	KAILUA	
Pay 'N Save 97.....2100 Kanoelohua Ave.	Karwacki Prof. Pharmacy.....30 Auilke St.	Pay 'N Save 111.....106 Kakaie
Ponahawai Pharmacy.....670 Ponahawai St.	Safeway #1087.....200 Hamauiua Dr.	
HONOKAA		KAILUA KOHA
Liu's Pharmacy.....P.O. Box 1346	Kona Cost Drugs, Inc.....75 5759 Kuaikini Hwy.	KTA Keauhou Pharmacy.....78-6831 Alii Dr.
HONOLULU		Pay 'N Save 72.....74-5584 Palani Rd.
Beretania Rx Pharmacy.....640 S. Beretania St.	LIHUE KAUAI	
Hawaii Prescription Plan.....1374 Nuuanu Ave.	Pay 'N Save 98.....4100 Rice St.	
Holiday Mart 1.....801 Kaheka	MILILANI TOWN	
Honolulu Pharmacy.....834 Ka'ih Street 23	Pay 'N Save 80.....95-221 Kipapa Dr.	
IPC Pharmacy / Frank.....839 S. Beretania St.	PEARL CITY	
CENTRAL KONA PHARMACY.....75-184 Hualalai Rd.		Times Pharmacy #12.....98-1264 Kaahumanu St.
KAILUA OAHU		WAIHAWA
Holiday Mart 2.....345 Hahani St.	Center Pharmacy, Inc.....502 California Ave.	
KAMUELA		WAIANAE
IPC Pharmacy / Kamuela.....P.O. Box 237	IPC Pharmacy / Waianae.....86-280 Farrington Hwy.	Pay 'N Save 73.....86-120 Farrington Hwy.
Village Pharmacy, Inc.....P.O. Box 340	WAILUKU	
KANEHOE		IPC Waiuku Professional.....1900 Main St.
Castle Professional.....4600 1 Kamahameha Hwy.	Valley Isle Pharmacy.....2180 Main St.	
Pay 'N Save 115.....45-480 Kaneohe Bay Dr.	WAIMANALO	
Times Pharmacy #4.....45-934 Kamahameha Hwy.	Waimanalo Pharmacy.....41-1810 Kalandianole H	
Windward Pharmacy.....48-058 Kamahameha Hwy.	WAIPAHU	
Pay 'N Save 78.....47-388 Hul iwa St.	Pay 'N Save 114.....94-300 Farrington Hwy.	Times Pharmacy #15.....94-144 Farrington Hwy.
KAAPAA		Times Pharmacy #6.....94-768 Farrington Hwy.
Shoreview Pharmacy.....4-1177 Hulo Hwy., #11	WAIMANALO	
KEALAKEKUA		
Oshima Drug.....P.O. Box 48	WAIKIKI	
KIHEI		
Maul Pharmacy Kihei.....1325 S. Kihei Rd., #110	LAHAINA	
LAHAINA		Crafts Drugs, Inc.....880 Front St., #118
Crafts Drugs, Inc.....880 Front St., #118	Lahaina Pharmacy.....880 Front St., #118	
LAHAINA MAUI		
Crafts Drugs, Inc.....Lahaina Shopping		

If you have any questions about this announcement, please contact Deseret Healthcare's Hawaii office. The telephone number is (808) 293-3970.

Sincerely,

DESERET HEALTHCARE

The stork has been very busy recently with our Center employees. We would like to welcome the newest little bundles of joy to the following families:

Wetherly Grace

Born to

Alfred & Val Grace

April 25, 1991 at 3:14 p.m.

6 lbs. 3 oz. 24"

Daddy works at the Waikiki Sales Office and Mommy works at the Human Resources Department

Charlotte Lokelanl Fonua

Born to

Kalake & Vanilla Fonua

May 13, 1991 at 8:50 p.m.

8 lbs. 11 oz.

Daddy works at the BYU-H Financial Aid Office and Mommy works at the Reservations Department

Melani Bessie Ramona Aiono

Born to

Sonny and Fia Aiono

May 1, 1991 at 6:15 p.m.

7 lbs. 21"

Daddy works for the Security Department at First Aid.



Gateway Corner

Kahuku Quizzard Team Gateway Workers

After six months of intense preparation, the Kahuku High Quizzard team battled their way through three rounds to be placed among the top eight teams out of 64 Hawaii High schools competing.

Seniors Margaret Britsch, Captain Melanie Tolleson, and Scott Walker, **all Gateway workers**, defeated Radford High, Henry Opukahala School from the Big Island, and Hanalani in order to earn a spot in the Quizzard quarter finals.

"It was a lot of fun to keep playing," said Margaret Britsch, "but each round had an increased level of difficulty."

The team was quizzed on everything from geography to philosophy, but history, math and literature

made up the majority of the questions.

"I think that this team was much more well rounded than any other year. We found people who were strong in different areas and they really came through for the school. It will take a very strong team to surpass what they did." said Coach Allen Awaya.

Kahuku's Quizzard team was eventually defeated in the quarter finals by Kapa'a High. Their final two games will be airing late in May and early in June.

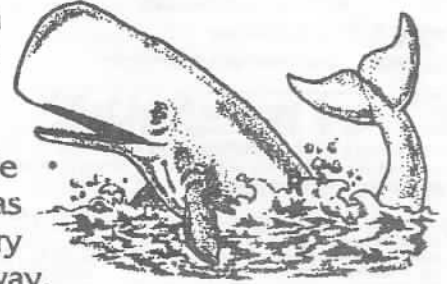


Lale May Day

May Day Program Goes "Under The Sea!"

On Friday, May 10, 1991, the Pacific Pavilion was turned into a giant ocean for part of the Lale Elementary.

The whole program was done in a very professional way, however the "Under the Sea" number from Walt Disney's "The Little Mermaid" was definitely a show stealer.



Shown below are just a couple of maybe a thousand *precious* moments caused by these little fishes.



Other Gateway News...

Congratulations to Pele Soifua who works in an on call position. Pele just received her mission call to the Los Angeles Mission. She will be leaving for the MTC on July 17th.

Happy Birthday!

Una Hafoka June 1
Kerry Moeal June 4

