



June 12, 1981

update 81

Polynesian Cultural Center

Appointments

New Faces 'Perform' Duties in Theatre

Announced Tuesday, June 9th, by PCC General Manager Bill Cravens, was the appointment of two, in the Cultural Presentations Division.

Cy Bridges has been appointed as the new Cultural Presentations Division Manager to fill the position being vacated by current Manager Bill Wallace who has been serving in that position since 1978. Bill will be leaving in August to attend the BYU Law School in Provo, Utah and has just completed his Masters Degree in Pacific Island Studies at U of H.

As Division Manager Cy will be responsible for 6 of the largest departments in the Center totaling over 750 employees. These departments include: Ed. Services, Village Oper., Theatre, Tech. Serv., Wardrobe, Cult. 6Orientation. He will also be responsible for the PCC Halau of which he has been a vital part, and will work closely with correlation of community activities as well.

Cy has had much experience in the Center including working in the Hawaiian Village, technical work with the Electricians Dept. and has very capably handled the position as Theatre Manager since 1978. He has also been a vital part of the music and dance of the Center through the Halau and other performing groups.

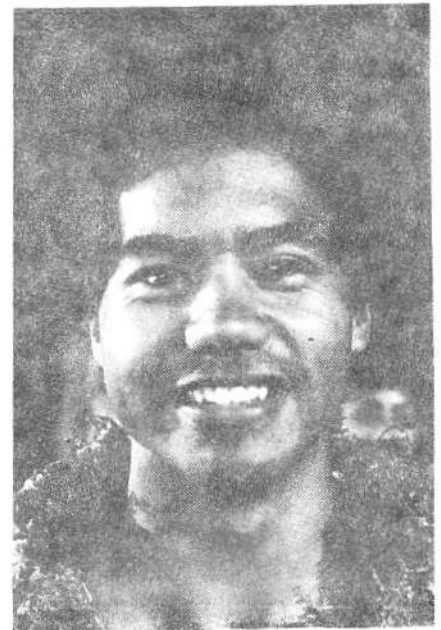
Keith Awai will be moving into the position as Theatre Manager. He is presently serving as a Dance Instructor for the Night Show as well as one of the greeters at the main gate of the Center. He has served in various positions in the Center and has worked at PCC for over 6 years, first while attending the BYU-Hawaii campus.

As Theatre manager he directs the activities of the Night Show (Invitation to Paradise), the Matinee Show (Music Polynesia), Brass Band and the Ushers. He will also be working closely with Albert Peters of the Technical Services and Tupu Hunt of Wardrobe.

Keith and Cy are both 'local boys', Cy being from Hauula and Keith from Haleiwa.



Cy Bridges



Keith Awai

Grand Opening New Waikiki Ticket Office

at the beautiful

Royal Hawaiian Shopping Center

Food, Polynesian Craft Displays,

Demonstrations of Traditions

Musical and Dance Performances
of different Island Cultures

June 16th, 10:45 A.M.

REMINDER

'Invitation to Paradise', Showtime is
7:45 P.M., June 1st-August 31st.

See next weeks issue for Special
Kam Day Stories & Photos.

Thursday * Nite Special

Talent Show *

Categories

- Country & Western • Instrumentals •
- Contemporary • Polynesian Music •
- Comedians • Groups • Soloists •
- Dancers • Modern • Polynesian • Ethnic
- Etc.

For further information *

contact Al Peters
293-9291 X 162 *

June 25th, 9:00-10:00 P.M.
PCC Old Theatre

BYU-HC Calendar

Friday, June 12th

Holt High School Choir
11:30 A.M., Mall

SA Dinner & Dance
Kuilima
Dance only-\$2.00
Dinner and Dance-\$5.00

Saturday, June 13th

Movie
"Oh God, II"

Showcase Fireside
Temple Visitors Center
7:00 P.M.

Ward Firesides

Mon. June 15th-Thurs. June 18th

Dead Week

Friday, June 19th

Graduation Ball
9:30 P.M.
Ballroom

Alumni Dinner
7:00 P.M.

Graduation Special

Permanent Wave
\$29.50 plus tax
(\$35.00 value)

Includes:

Cut

Perm

Condition

Style(long hair-\$2.00)

June 8th-19th

9-5, Mon.-Fri.

or call for appointment

Styling for Men & Women

Shear Perfection
BYU Aloha Center

On the thirteenth Article of Faith

It is difficult to find a statement so suited to the heart of Mormonism than the 13th Article of Faith penned by a prophet of God. How does this statement relate to the Center, its concept and purposes, and its day-to-day operation?

To begin with, it is necessary to define the 13th Article in as few words as possible. A phrase repeats itself as I ponder the possibilities--"the pursuit of excellence." It is applicable to an individual, family, stake, school, or cultural center. It embodies all aspects of that last article as well as the preceding twelve.

As active worshippers of God and Christ, we recognize that the pursuit of excellence in a religious life requires an understanding of ordinances and organization as well as of individual destiny. It is clear that the revealed gospel provides "a more excellent way" in which to live and serve, the pursuit of which can only bless the individual.

As a church-operated concern, PCC provides those of us who work in its many areas the opportunity to pursue excellence in all we say and do in our employment. This being so, can we speak excellence to our guests and say less to our fellow workers?

I am impressed with the many incidents reflecting genuine concern for one another which I have witnessed among Center personnel. I am even more impressed with the encouragement and support which is extended to employees as they achieve a measure of excellence in a wide variety of interests beyond the Center's bounds.

There is no doubt that we have multi-talented individuals among us who are making contributions in the wider community that reflect that inner knowledge and drive towards excellence which is basic gospel living. The range is wide, from the concentration of talent and dedication that won success for our Halau at the Merrie Monarch Festival, to the multiple successes achieved by Cultural Orientation guides who weekly place more Books of Mormon with interested people than many of us do in a lifetime.

The Center may not be able to measure the extent of its influence in the lives of either its guests or its employees, but it is a fact that many guests allow the missionaries into their homes because of their experience among us. It is also a fact that successful individuals in many careers around the Pacific acknowledge an indebtedness to the Center for the opportunity that betan their careers.

It feels god to work in an atmosphere of respect and support where we have elbow room and opportunity in which to initiate action that will develop our talents and interests, for that individual who is given a sense of worth and accomplishment is bound only by the limitations of his own energy and vision. May our vision encompass everything virtuous, lovely, of good report and praiseworthy as we continue to share the Center experience with those yet unacquainted with us.

Shop Polynesia

Graduation-Fathers Day Special

40% Discount with PCC I.D.

Monday-Friday, 10-4:30