



# EMPLOYEE UPDATE

Polynesian Cultural Center    □    July 18, 1980

## Tahiti shows visitors 'swinging' time



"When Hawaiians dance, they say the hands tell the story, but in Tahiti, if you watch the hands you'll miss the whole show." How true that witty line is! The Tahitians' "tamure" was definitely one of the crowd's favorite dances in the Bastille Day program.

### Registration open for culture classes

Spouses and children of PCC employees are invited to attend summer classes being offered by the Cultural Education Department. The usual registration fee will be waived, and they will be charged only for any materials used.

The youngsters' Polynesian culture class, for those aged six to 18, will be held from 8:30 to 11:20 a.m. The adult classes,

"Peoples of Polynesia" and "Polynesian Crafts," will run from 8:30 to 11:20 a.m. and 9:30 to 11:20 a.m., respectively. All courses will begin on Monday, July 21, and will run for four weeks.

Classes will be limited to an enrollment of 25, and registration will be on a first-come-first-served basis. If any of your family members are interested in enrolling in any of Cultural Education's summer classes, they should sign up as soon as possible with Cynthia Schwenke, department secretary. Cultural Education is located next door to Graphics near the old theater.



Cloudy skies and a drizzle didn't dampen any of Tahiti's Bastille Day spirit on Monday. Our villagers from the "swinging isles" put on a fine afternoon show for an enthusiastic crowd, which included Brother Jeffrey Holland and his family.

(Brother Holland, a member of our Board of Directors, came to Hawaii for meetings at PCC last weekend. He is the president of Brigham Young University--Provo Campus.)

See pages 2 and 3 for more on our Bastille Day festivities -- and relive all the fun and excitement!

### Fun at a discount

Are you planning a vacation to California this year? If the answer is "yes" and if you're including Universal Studios and Disneyland on your itinerary, you can take advantage of special discounts that these attractions offer to PCC employees.

Universal Studios will extend a 10% discount on its studio tour price of \$7.50 to you and your family members. Disneyland offers a special Passport ticket which will admit you and your family to all of its rides and attractions at one low price.

To receive these discounts, you must present a special savings certificate at the box office windows of the attractions. This certificate, valid through December 31 of this year, is available free at the Personnel Office. For more information, call extension 126 or 127.

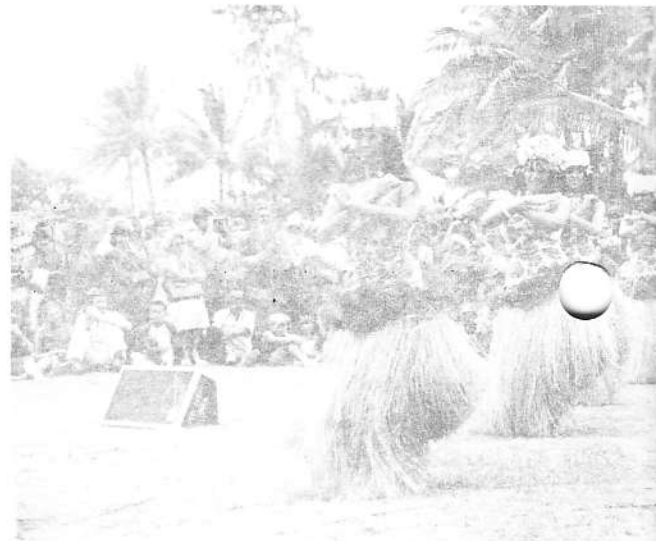
# I A O R A N A !



Left: A vi  
Cravens,  
program,  
popular T  
in a ligh  
Jeffrey H  
Directors.

Right: Co  
was one o  
the speci

Visitors' cameras focused on our color-  
fully costumed Tahitian village women as  
they performed the popular "tamure."



And the young guys weren't about to be left out of the fun either. Here, they imitate the steps their brothers and fathers had demonstrated earlier in the program.



Also getting into the act were General Ma  
Carl Fonoimoana, shown here as they tr

lager presents General Manager Bill  
the guest of honor at the Bastille Day  
with a basket laden with fresh fruits (a  
Tahitian custom). Looking on at the left,  
-colored shirt and dark glasses, is  
olland, a member of our Board of

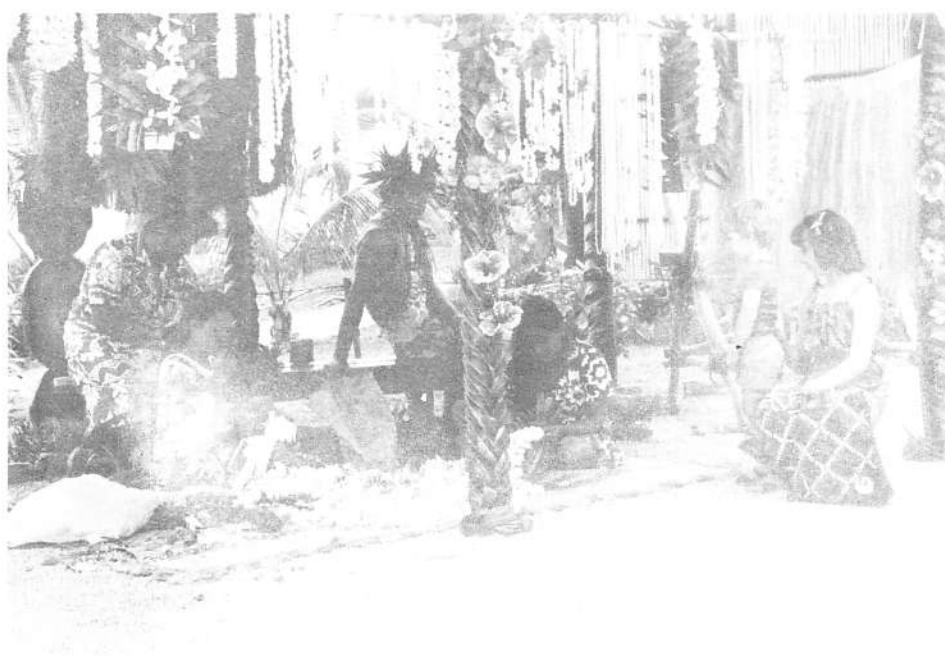
coconut husking, opening and grating  
of the exciting competitions featured in  
al Bastille Day celebration.



Even the little ones had a chance to per-  
form. Here, the "tamure" queens of to-  
morrow, all family members of PCC  
employees, show their stuff.



anager Bill Cravens and Administrative Assistant  
y to match the dancing skill of their children.



Another part of the Bastille Day activities were special demonstrations in the Tahitian  
village. Two young visitors pause for a moment to admire the handiwork of the villagers.



# Visitor industry people rediscover Polynesia



Above: Sales account executive Haili Pokipala (with hat) directs arriving travel industry members to PCC's lagoon area, where they viewed our canoe pageant before going on their tours of the villages.

Below: Jim Bassett (with kukui nut lei), PCC's other sales account executive, assists "fam" tour guests along the dinner buffet line.



More than 300 members of Hawaii's visitor industry enjoyed Familiarization Tours of the Center on Monday and Tuesday.

These travel agents and tour company representatives arrived in time to view the "Pageant of the Long Canoes" and go on a leisurely tour of our villages on their own before regrouping for a special Polynesian dinner in The Gateway and attending the evening show.

The "fam" tours were a valuable learning experience for the travel industry people, most of whom book reservations and answer tourists' questions about PCC daily, yet either had never been to the Center or had not visited us for several years.

As we mentioned in last week's Update, the tours helped reacquaint the local travel industry members with PCC and allowed them to experience our Polynesian lifestyles firsthand. Having had this opportunity to see our villages and shows for themselves, they will be better able to service tourists interested in coming to the Center -- and draw others out to Laie who may not have had PCC on their vacation itineraries.

## PCC golf tourney

Attention, golf buffs! A great opportunity is coming up for you to compete for fun against your fellow workers at PCC. The Center's golf tournament has been set for Thursday, August 7, at the Hyatt Kuilima's course.

Participants will be charged \$8 (money to be collected the day of the tourney), which covers the green fee and cart rental. Tee-off time will be 1 p.m.

If you would like to play in the tournament, but usually work in the afternoon, be sure to check with your supervisor or manager as soon as possible to see if your schedule can be juggled. Tiloi Lolotai is signing up golf tourney participants now in the Recreation Department office near Hale Kuai.

## BYU--H Calendar

### Friday, July 18

- Frisbee contest, rugby field, 3:30 to 5 p.m.
- Soccer, rugby field, 5 to 7 p.m.
- Dance, ballroom 9:30 p.m. Admission by student identification or guest card only. Please adhere to BYU--H dress standards.

### Saturday, July 19

- Surfing movie, "Hot Lips and Inner Tubes," auditorium, 6:30 and 9:30 p.m. Admission charge.

### Wednesday, July 23

- Movie, "Roots" (Part I, auditorium. Admission charge. Please call Student Association Office for showtime. Part II to be shown on Saturday, July 26.