



July 31, 1981

update 81

Polynesian Cultural Center
William H. Cravens-General Manager

Malietoa Tanumafili II - Head of State

Royal Wedding Guest To Visit Samoan Village

by Mike Foley

As part of its annual Samoan culture day program on August 6, the Polynesian Cultural Center will stage an 'ava fa'atupu or king's kava ceremony in honor of His Highness Malietoa Tanumafili II, Head of State of Western Samoa.

The Samoan leader, who is the descendant of the former kings of those South Pacific islands, is stopping off in Hawaii enroute home from the royal wedding of Prince Charles and Lady Diana in London.

Over 100 Center villagers will take part in the unique kava ceremony starting at 1:00 p.m.

The principal participants who can be seen putting on the ceremony that day include a *tulafale* -- a Samoan orator who recites prescribed speeches on behalf of the Center, and an *ali'i* or chief in traditional attire who mixes and strains pieces of dried kava root in an ornately carved wooden bowl.

Other special guests expected to attend the king's kava ceremony at the Polynesian Cultural Center include Hawaii Gov. George Ariyoshi, Honolulu Mayor Eileen Anderson, and representatives of the Kawanakoa family -- descendants of Hawaii's former kings.

Five of the Center's seven villages -- which represent the cultures of Hawaii, Fiji, Tonga, Tahiti, the Marquesas, New Zealand's Maoris, and of course Samoa, will each present the Honorable Malietoa with whole roasted pigs weighing hundreds of pounds apiece as well as 'ie toga or finely woven mats that are highly prized in the Samoan Culture.



Photos by Earl Milham

Aloha Bill And Niki

Bill and Niki Wallace will be leaving next week for Provo, Utah where Bill will be attending Law School at BYU. He has just completed his Masters Degree in Pacific Island Studies at U of H, one of his many great accomplishments.

Bill has been serving as the Cultural Presentation Division Manager for the Center since 1978. Before that position he was the Manager of the Theatre and has worked in nearly every aspect of the Cultural Center since he first came here as a student. Included in his long list of experiences are musician in the dining lanai, night show per-

former, canoe paddler, tour driver and Hawaiian Village worker. In fact it was during his time in the aawaiian Village that he met his wife Niki. She was working at the same time in the Maori Village. According to an authoritative source, Bill and Niki used to peer at each other across the lagoon but never really met until one day hen village workers from both villages engaged in a fierce water fight that finally got the two of them together. They dated once and three weeks later were married.

continued on Page 3

I Trained By Walking Around PCC

Runners, joggers and fitness-buffs laced up their shoes Saturday, July 25th to make history in Hawaii's first-ever Pioneer Day commemoration **MORMON MARATHON!!** Nearly 435 runners were slated to start in the quadruple event marathon that began at 5:30 a.m. as full marathon (26 miles) runners shot into the rising sun. Among those running were some Center employees and former employees. These include: Berdeen and Bonnie Jean Keawe (Concessions Dept.), Faitau Owen Tipa (Village Maintenance), May Mallahan (formerly of the Moari Village), Jubille Logan (formerly of the Hawaiian Village), and Cynthia Machado.

Full-distance marathon (26 mi.) trophies were taken by Mike LaPierre (time 2:54:34) a non-member who is a pilot for Western Airlines and Joy Waldron (time 3:53:54) who came all the way from Salt Lake City for the race.

Other 1st place winners include: Mini-marathon (13 mi.) Men- Paul Hayes, 1:29:28; Women- Marvel Callister, 1:59:58. Four-Person Relay- Jerry Andersen, Chuck Wall, Charles Savely, Henry Hatch (Schofield Barracks), 2:48:08. Four-Person Mini Relay- Tom Patykula, Bob Hoffman, Tom Bailey, Steve Doherty (Schofield Barracks), 1:15:06. Former PCC employee Cynthia Machado took 2nd place in the mini-marathon women's division with a time of 2:08:34. Employee Owen Tipa came in 5th in the mens mini-marathon with a time of 1:37:01 and was the 2nd mormon to finish that event.

This fitness, friendship activity is also an excellent money making opportunity for the Missionary fund. All you runner and joggers start training for next year's 2nd Annual Mormon Marathon.

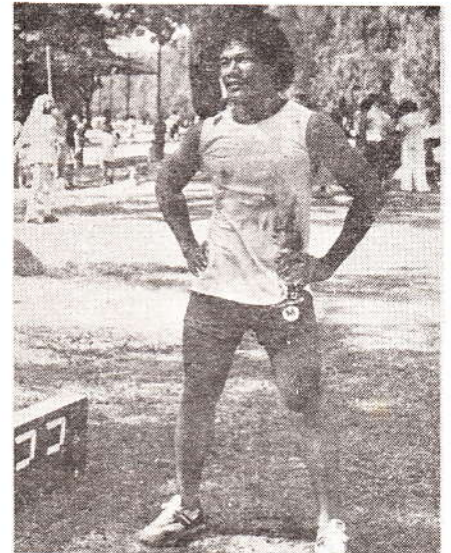


Photo by Loni Manning

Gate Now Guarded

Effective immediately, a security officer is posted at the Administration Building gate from 9:00 a.m. to 5:00 p.m. on week days and the gate will be closed on Saturdays and Sundays. All employees who use this gate must show their I.D.'s.

Sam Langi

It Is Not Too Late To Be Healthy

There is still time to take advantage of this week's Health Week activities today, Friday the 31st. T.B. test readings will be taken for those interested in being tested for T.B. go to the Old Conference Room where qualified members of the First Aid staff will be waiting.

This week has been an informative and helpful week of speaker films and tests covering a variety of subjects such as Cancer, the Heart, T.B., Diabetes and much more.

PCC employees have been giving as well as receiving by donating their blood to the blood drive.

If you were unable to attend these sessions but would still like some information on how to be healthier contact the First Aid officers today at the Old Conference Room or later at extension 3124.

Credit Union Benefits Available

You and your family are eligible to belong to the credit union associated with the Polynesian Cultural Center. What is a credit union? A credit union is a group of people sharing a common bond of association who save together to make low cost loans to each other from the accumulated funds. The combined savings deposited by each member becomes the source of funds for the credit union. Each credit union is an individual no-profit organization supervised by either federal or state government. It is owned and operated by its members and services only its members.

Who may join the credit union?

1. Only full-time employees (30 hours a week on up.
2. Full-time employee who has been working at least 1 year.
3. Resident of Hawaii and not a member of another credit union.
4. Members of eligible employees families.

How do you join? You may join by completing a membership card, depositing a minimum of \$5.00 into your savings account, and paying a one-time membership fee of \$1.00

Polynesian Cultural Center is providing you the benefit of Payroll Deduction. You may authorize your company to deduct funds from your paycheck to send to the credit union.

There are savings, insurance and loan programs available through the credit union. For more information contact the Personnel Department.

Update

This publication is printed as a service to Polynesian Cultural Center Employees each Friday. Your comments, criticisms and ideas are welcome. Please contact Vernice Pere at 3012 or Loni Manning at 3041.

The Employee Update is printed by the PCC Graphics Department.

Bill and Niki Moving On...

Continued from Page 1

Niki has also had a treasure of cultural experience while here in Hawaii. She is the niece of John Rangihau the leading authority in Maori culture and Niki is following in his footsteps as well as making some footprints of her own. Niki is one of the few fluent speakers of the Moari language here, a rarity for a person of her young age. She has been working as a cultural specialist at the Center and is just that. She is extremely knowledgeable of Maori customs and crafts as well, and has been an instructor at BYU.

Bill is really a son of Polynesia in that he is a descendant of the Malietoa Tanumafili who will be visiting here next week. Along with his royal Samoan heritage he is also tied into the Tongan family of Tui Pele Hake and has Fijian, Tahitian and of course Hawaiian ancestry. He gets his surname Wallace from

Sir William Wallace of Scotland. Together with the rich Maori heritage of his wife Niki they will pass on to their children and to Polynesia more than a learned culture.

Bill and Niki have come a long way from a green flashy baracuda and water fights to a bright and getting better future.

All of their friends and family here at the Center wish them success in their ventures and a loving Aloha.

Win A Free Trip At Travel Open House

PCC Properties, Incorporated Travel Service will be hosting an Open House this Friday, July 31st and Saturday, August 1st from 10:30 a.m. to 2:00 p.m. at their office near the main entrance of the Center.

Door prizes will be given and a Grand Prize will be a trip for two to Maui all expenses paid for air fare, hotel and car. All employees should receive a registration form for the drawing in their paycheck envelope this Friday. Refreshments will be served and all employees and community members are invited.

Hawaiian Dancers Stage Surprise Party

Have you ever been the guest of honor at a surprise party you planned yourself? Well, that is what happened to Night Show Hawaiian section leader Caroline Purcell. How did that happen? Caroline has recently been at home ill, but before she left she and some of the other members of the section planned a party, supposedly in honor of Keith Awai former instructor who is now the theatre manager.

The party proceeded as planned with one exception ... 50 night show dancers suddenly appeared at Caroline's house singing and bearing gifts. They surprised her with a cake made out of diapers and a baby book, two great gifts for a very soon to be mother.

There was food and fun for everyone and some even entertained themselves by jumping rope.

Come See The Jerusalem Photo Display

by Vernice Pere

2nd Floor Administration Building



viewpoint

vernicepere

"Thou art my king, O God"
Psalms 44:4

This week the attention of the free world has been riveted on Britain's royal wedding. Aptly called "the wedding of the century," the pomp and pageantry, tradition and trappings, and the solemn ceremony contrasted with the goodwill of hundreds of thousands of Britons have given all of us much to think on.

Here in the Pacific we have strong ties to at least three world powers and owe allegiance to rulers in England, America, and France. In addition, we who are Polynesian have our own leaders whom we honor with respect and service. The visit next week of His Highness Malietoa Tanumafili II, Head of State of Western Samoa, is an honor we are please to enjoy.

The Center has already hosted the King of Tonga, Taufa'ahau Tupou IV, and the Maori queen, Atairangikaahu, as well as allii and dignitaries from most Pacific island states. It is a measure of the Center's example in the Pacific and influence worldwide that such men and women are pleased to visit with us, and it is our honor to accord them the formal respect their offices merit.

The gospel of Jesus Christ is supportive in our honoring of such leaders among us. The twelfth Article of Faith states: we believe in being subject to kings presidents, and rulers, and magistrates, in obeying, honoring, and sustaining the law.

When the children of Israel insisted that Samuel choose a king to rule over them, the Lord comforted him by saying, "...they have not rejected thee, but they have rejected me, that I should not reign over them." He told Samuel to choose a king for Israel. When King Saul later displeased God, Samuel was again instructed this time go the house of Jesse to choose Israel's ruler from among his sons.

The account of Samuel's fulfilling that task reveals a great truth to us, as one by one the sons of Jesse passed before the prophet and each one appeared to Samuel to be worthy of the calling. However, the Lord said to him:

"Look not on his countenance, or on the height of his stature; because I have refused him: for the Lord seeth not as man seeth; for man looketh on the outward appearance, but the Lord looketh on the heart."

When young David was brought before Samuel, the Lord said to his prophet, "Arise, anoint him: for this is he."

We tend today to look on the outward appearance of those who rule over us. Mass communication publicizes even the private moments of the lives of our leaders so that they are forced to present a public face to us at all times. In such a world it is important that we look on the hearts of those whom we choose to represent our ideals.

It is also important that we acknowledge the Lord as sovereign and ruler, creator and king of us all. In this knowledge there is safety and blessing, and all wise and true monarchs have known that fact and reigned accordingly.

"For God is my king ... working
salvation in the midst of the earth."
Psalms 74:12

BYU-HC Calendar

Friday, July 31st

Summer Movie Magic
Outdoors in Little Circle
8:00 p.m. Cartoons
8:30 p.m. Flash Gordon
10:15 p.m. Chinese Connection
12:00 a.m. Flash Gordon

°°Food sold by Clubs and Wards

Saturday, August 1st

Movie of the Week
Invasion of the Body Snatchers
Auditorium; 6:30 & 9:30 p.m.

Tuesday, August 4th

World Adventure Film
Hawaii: An Insider's View
Free, 7:30 p.m. Little Theater

Wednesday, August 5th

Comedy Movie Classic
Duck Soup

Friday, August 7th

Silver Streak Disco
Aloha Center Ballroom 9:30 - 12:30
ACTIVITIES HOTLINE: 293-3577

Coming Soon

The Personnel Department presents for your viewing pleasure, August 14th Friday, a free movie - "The Little Rascals" followed by "Trinity Is Still My Name". Showtime will be 7:30 p.m. in the Old Theater. Your PCC I.D. will be your admission for you and your family or friends.

Fun And Games!!

The Perfect Place To Bring Your
Family

Ping pong, bowling, space invaders

BYU--HC Gamecenter
10:00 A.M. to 11:30 P.M.
For Information CALL 293-3549