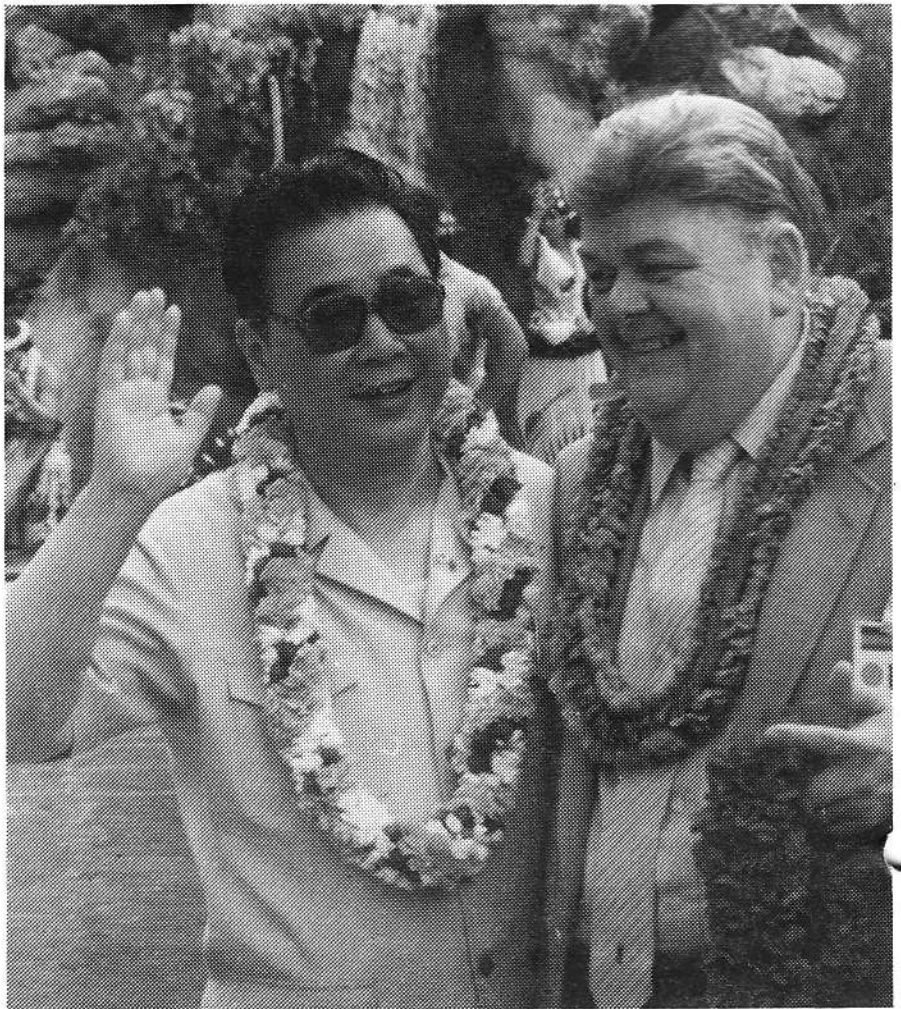


UPDATE '85



Chinese Visit Exclusive to PCC

Wednesday, July 31st 1985, was a big day for the Polynesian Cultural Center. Li Xiannian, President of the People's Republic of China, along with his wife and entourage, made the PCC their only official and brief stop in Hawaii while enroute back to China. Heavily guarded by literally dozens of Secret Service, HPD and PCC security personnel, the President stepped from his motorcade to an atmosphere of festivity in the Center. Accompanied by Elder Marvin J. Ashton, General Manager Ralph Rodgers and a small group of hosts, the Chinese guests first took a canoe ride along the PCC waterways where singing, dancing, costume and craft demonstrations from all the villages flanked them in welcome. A brief reception, featuring food and drink from Polynesia, followed. The group then pressed on to the Pacific Pavilion where a shortened version of the night show "This is Polynesia" was presented for the presidential party's enjoyment. Dancers and singers performed impeccably to a full house of guests, many from the Laie community. Gifts of a koa bowl and macadamia nuts were presented to the President thereafter and "Aloha Oe" was sung as his group left the theatre. Waiting vehicles and helicopters whisked them away. The entire visit lasted only ninety minutes, but was packed with enough entertainment to provide fond memories for a lifetime.







THE EVEN GREATER PO WINN

The final entries have been tabulated and after a hard
Langi has won this even greater and considerably hard
Trailing Pam Su'a all the way by a point or two, Sam fir
questions to pull off the upset victory. Second place goes
followed by Leialoha Jenkins and Solomon Kahawaili in
by a mere single point also. UPDATE congratulates all
ranks of the trivia marathon and hopes they had fun. A
well as the top ranked three, will receive a prize. Some of
are the final point standings:

Sam Langi.....	1
Pam Su'a.....	2
Leialoha Jenkins.....	3
Solomon Kahawaili.....	4
Lindy Tufaga.....	5
Luse Magalei.....	6



Friday, August 2, 1985



THE EVEN GREATER PCC TRIVIA MARATHON **WINNERS**

The final entries have been tabulated and after a hard fought battle, Personnel Manager Sam Langi has won this even greater and considerably harder version of the PCC Trivia Marathon. Trailing Pam Su'a all the way by a point or two, Sam finished strongly on the last double set of questions to pull off the upset victory. Second place goes to Special Projects Manager Pam Su'a, followed by Leialoha Jenkins and Solomon Kahawaili in close running for third. Leialoha took it by a mere single point also. UPDATE congratulates all who played along and placed in the top ranks of the trivia marathon and hopes they had fun. All players were weekly winners and, as well as the top ranked three, will receive a prize. Some of them are pictured on these pages. Here are the final point standings:

Sam Langi.....	167
Pam Su'a.....	166
Leialoha Jenkins.....	80
Solomon Kahawaili.....	79
Lindy Tufaga.....	74
Luse Magalei.....	68





PCC TRIVIA MARATHON WINNERS

...fought battle, Personnel Manager Sam
...er version of the PCC Trivia Marathon.
...shed strongly on the last double set of
...to Special Projects Manager Pam Su'a,
...close running for third. Leialoha took it
...who played along and placed in the top
...l players were weekly winners and, as
...them are pictured on these pages. Here



.....	167
.....	166
.....	80
.....	79
.....	74
.....	68

Bryan Bowles Will Head New Division

On Friday, July 26th 1985, General Manager Ralph Rodgers announced the forming of a new division at the Polynesian Cultural Center. The division will be known as Corporate Relations and will be headed by former Theater Manager, Bryan Bowles. Bryan has been named the Managing Director of Corporate Relations which will include all promotions, public relations, advertising, training, special projects, video services, graphics and UPDATE.

Bryan brings with him many varied talents and experiences. Along with being the Theater Manager, Bryan has also been manager of the Training Department. Before being employed by PCC, Bryan taught drama, was one of Utah's finest stage directors and actors, and was involved in promotions and advertising in many different ways. Bryan was married earlier last month to the former Joan Jensen, who is also a talented actress and dancer. They spent their honeymoon in Tahiti studying Tahitian music and dance in their first Polynesian experience out of Hawaii.

According to Bryan, the new division

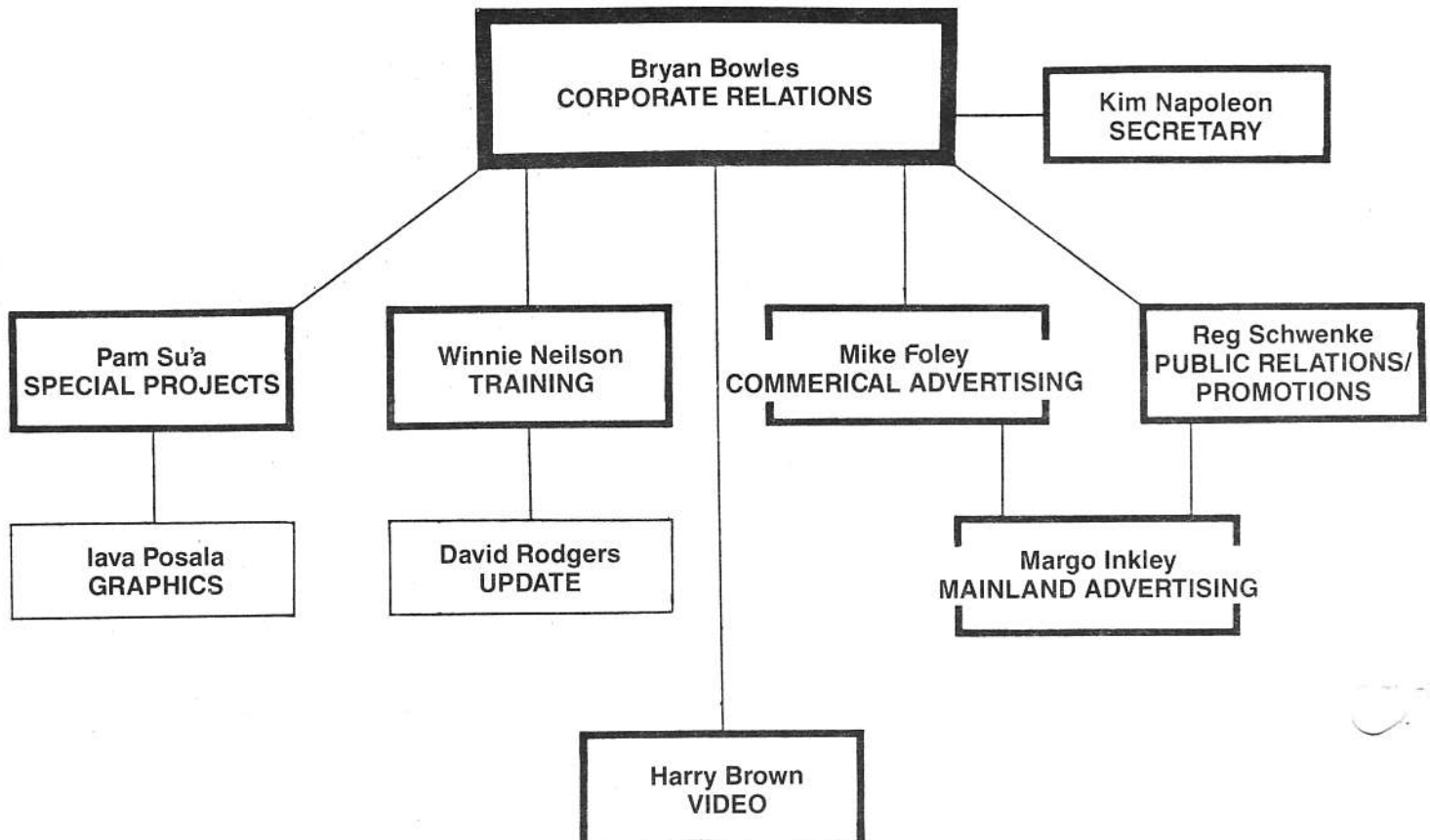
is a logical move. "It may seem quite separated to some, but when you look at the organization, we really fit together and should work closely together. Perhaps more than any other department in the Center, we must concentrate on working with other areas to ensure the success of PCC. We will be working on relations both internally and externally. Internally, through training and special projects and externally through promotions, public relations and advertising."

Bryan outlined the areas in which he would like to see Corporate Relations focus. "Our name should be everywhere! We should be in front of the public in Hawaii, on the Mainland, in the Orient and throughout the world. Our promotions help us to receive a great deal of free publicity and our advertising campaign fills and makes our publicity constant. We also have the responsibility to help our employees have a great experience at PCC. The training department is more than just training; it also includes setting up the employee room, preparing athletic events such as the one now being presented and helping em-

ployees with their concerns and questions. Through the UPDATE, the training department keeps employees informed of events. The UPDATE is the only thing which all the employees of the Center have in common each week and it serves to help unify us. Special Projects fills many needs. They have sponsored some excellent employee activities such as the Halloween parties last year, the Easter egg hunt, fireworks, dinners and Christmas parties just to name a few. We are responsible for presenting PCC to the world and to each other."

On behalf of all of the employees at the Cultural Center, Bryan expressed appreciation for Vernice Pere. She has been instrumental in building Special Projects and the UPDATE from their inception. "Vernice leaves behind a very strong department which has the reputation of always getting the job done well. She deserves special mention for her years of hard work in that area."

The UPDATE congratulates Bryan on his new assignment. We're excited to work with him and we're confident that he will achieve his goals.





THE TRAINING DEPARTMENT IS STILL LOOKING FOR MEMBERS FOR THEIR EXCLUSIVE "C" TEAM!

10 Awards are given each month in the following catagories:

VILLAGES
GUIDES
SUPPORT SERVICES
GATEWAY
CONCESSIONS
THEATRE (Onstage)
THEATRE (Backstage)
SALES/MARKETING
ADMINISTRATIVE
(Which includes all those not listed in previous catagories)

The ONLY WAY to become a member of The "C" Team is to be nominated by co-workers. Use the forms provided to managers, supervisors, etc., to nominate those who go the extra mile, above and beyond the call of duty, and who exemplify the spirit of the Polynesian Cultural Center. Return forms to your managers, supervisors, etc., by the end of each month -- the next week awards will be made to those people chosen from all nominations. The award includes \$10.00, a "C" Team button and other considerations yet to be conceived!

Members of the "C" Team so far include: KILIFI TUANITANU, SHAWN LAYOSA, RAKAPA STURM, AILAOA SIILATA, COREY KEIL, MILDRED CASHMAN, APAI RAREBA, SEREIMA DAMUNI, CATHERINE LIM, DANIEL KEUMA, RUTH PANEE and SIOSIFA HEMOLI.

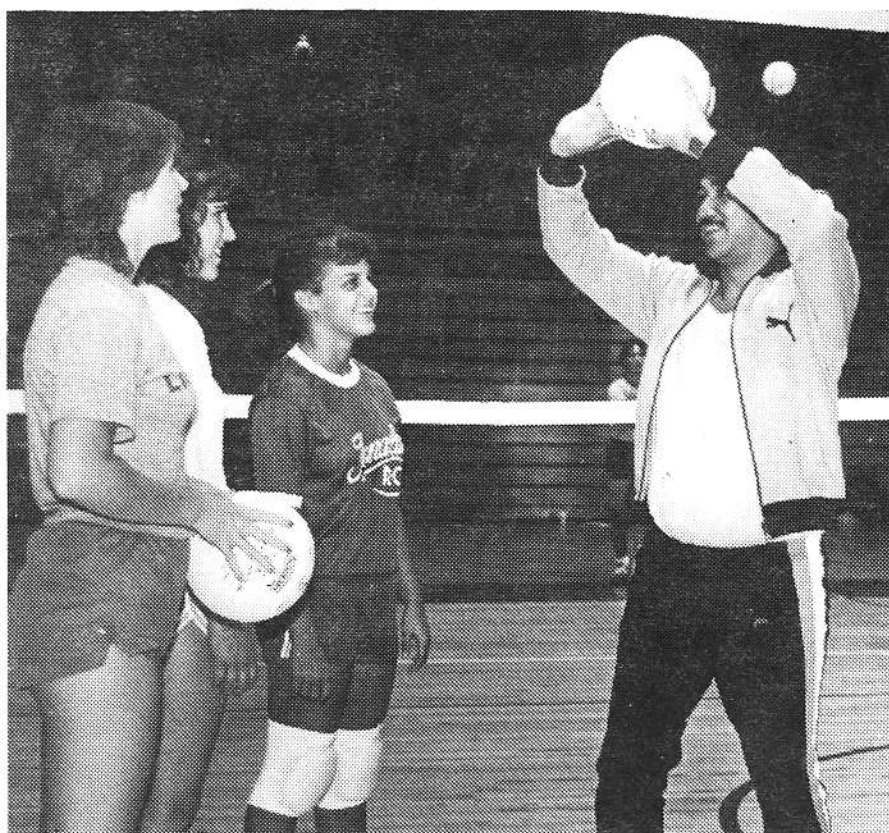
ANOTHER 1ST FROM TRAINING

Here's your chance to learn **CHESS**, **CHECKERS** and **BACKGAMMON** in preparation for tournaments coming up. Workshops will be held in the lounge outside the Training Room on Tuesdays and Thursdays from 9:00-11:00am and 4:00-5:00pm beginning August 6th. If you have your own sets, bring them along; if not, we'll have some available. This will give you an opportunity to learn for your own enjoyment or to compete in our upcoming tournaments.

"ON YOUR MARK, GET SET FOR..."

Basketball and volleyball leagues are now being put together for games on August 24, August 31 and September 7. The games will last from 7:00-11:00am in the BYU-HC Gym. Categories include separate teams for men and women, and co-ed teams of three men and three women for volleyball, three men and two women for basketball. There is a registration fee of \$10.00 per sport, no matter how many teams. Roster and registration fees are due to the Training Department by August 12th.

Softball games comprising five men and five women per team will also be started. Games are scheduled on BYU-HC Parking Lot Field from 7:00-11:00am, August 26 through 30 and 7:00-12:00 noon, September 2. The registration fee of \$10.00 is due along with rosters by August 19th. Come out and have some fun. Prizes will be awarded.



Mr. Rodger's Neighborhood

By David Rodgers

As we watched President Li wave goodbye and walk up towards the steps last Wednesday, many thoughts ran through our minds. Perhaps we were wondering what he took back with him to China from his visit to PCC. He received, among other things, a koa bowl and the macadamia nuts, but what memories will he have of his brief but incredibly spectacular stay? He might remember:

*Coming into the Pacific Pavilion and walking down the steps while the Laie community rose and applauded.

*Being greeted by an apostle of the Lord who in his humble way showed him the Mormon concept of education, family and hospitality.

*Being seated on a canoe which had been decorated at 3:00am that morning; sitting on a chair which had the legs taken off so that his arms and back could rest.

*Seeing a fast-paced, beautifully spectacular performance of "This is Polynesia".

*Being pushed over a lagoon which had been scrubbed by the same people who were dancing for him.

*Sampling some of the best of Polynesian foods including cold shrimp, cake, strawberries, cherries, kiwi fruit, pineapple, papayas, mangos, bananas, oranges, melons and apples.

*Being protected by 30 Secret Service people, 35 PCC Security personnel, 25 HPD people, 2 ambulances, a Medivac helicopter, a counter assault team and the PCC First Aid department.

*Being entertained by a completely choreographed village presentation with canoes and demonstrations shown at their finest.

*Seeing grounds that have never looked so perfect and immaculate.

When all is over and we look back on those 90 minutes the real story that comes to mind is the incredible preparation that went into this visit. Employees in every area went the second, third and fourth miles to make the thirty seconds in which the President would see them the very best. The Polynesian Cultural Center has never looked finer and we have never had more reason to be proud of ourselves than right now as President Li returns home.

Steve Studdert, a special aide to President Reagan and one who has been with President Li throughout his U.S. visit, said as he left, "You people were the frosting on the cake and without a doubt the best part of his visit to our nation."

CALENDAR

Friday, August 2

Italian spaghetti w/ meatballs, garlic bread, tossed salad w/ dressing, drink

Saturday 3

Swiss beef liver, steamed rice, buttered mix veg., drink

Monday 5

Teriyaki pork, steamed rice, buttered corn, drink

Tuesday 6

Roast chicken, sage dressing, giblet gravy, steamed rice, peas and carrots, drink

Wednesday 7

Roast beef w/ gravy, oven brown potatoes, seasoned mix veg., drink

Thursday 8

Sweet and sour chicken, steamed rice, peas and carrots, drink

Friday 9

Breaded pork slice, brown gravy, mashed potatoes, seasoned carrots, drink

