



Polynesian Cultural Center

UPDATE '91

Employee Newsletter

Thursday, August 15, 1991

Laie Day Festivities!

This community celebration was held on Saturday, July 27. Some of the many activities which took place included a beach landing by some of the local national guard, a "fun run", of course The Parade and the many activities which took place at BYU-Hawaii throughout the day.

This community wide celebration was somewhat of a tribute to the military and especially those armed forces personnel who served in the Persian Gulf War earlier this year. Some 200 military personnel participated in the parade and activities that followed.

Pictured below and at right are just a few of the parade dignitaries. Other parade



President Shumway waves from his cart! Mahalo to the Marquesas Village for decorating his cart.

highlights included the PCC Brass Band, a "Desert Storm" military float which featured two of Laie's own Desert Storm veterans and a mock full sized submarine float. Many other groups and organizations were represented. Mahalo to all those who helped make this day a huge success!



Mayor Fasi joins us to Celebrate Laie!

In This Issue

- Splash Party Photos
- Former PCC Manager Passes Away
- PCC Olympian
- Employees of the Month
- Much, Much, more

**Deadline for the next
UPDATE is Mon. Aug. 26**

PCC Splash Party



Our many thanks
to all those who braved
the gray skies and joined us
in our effort to help keep the Center clean and
beautiful. See you next time! *(the rest of you)*





Former PCC Manager Passes Away



Lester C. Hawthorne, PCC General Manager from 1964 to 1966 passed away on Monday, July 29, 1991. He is survived by his wife Edith, by daughters Leslie Averett, Barbara

Keep and Janey Trejo; sister Martha Nipper; 22 grandchildren; 20 great-grandchildren. Services were held on Saturday, August 3, 1991 in San Luis Obispo.

Hawthorne had been general manager of the Center "back in the early days when it was struggling" according to Mrs. Hawthorne. He loved to visit Hawaii and visited almost every year. According to his wife, "We had tickets for September that we had to cancel when he found out he had to have an operation."

Hawthorne has been busy in service to the Church as well serving as the stake president on Oahu and the Big Island; mission president in Jakarta, Indonesia; bishop of the San Luis Obispo third ward; temple president in Australia and New Zealand for six years, during which time he built 40 chapels.

During the time he was in Hawaii, he was construction manager for the Hilton Hawaiian Village Rainbow Tower and the Sharaton Waikiki Hotel.

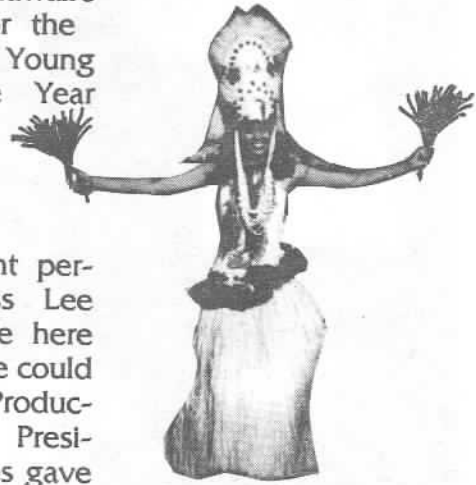
Center Vice President, T. David Hanne-mann remembers Brother Hawthorne as a very strong man who brought a great spiritual atmosphere to the Center.

Tahitian Costume Helps Hawaii's Young Woman of the Year

Miss Sarah Lee, Hawaii's representative for the National 1991 Young Woman of the Year Competition needed a little "extra" for her national

competition talent performance. Miss Lee asked the people here at the Center if we could help. Cultural Productions Vice Presi-

dent, Bryan Bowles gave permission for her to use one of the new Tahitian costumes from "Mana". With costume in hand, Sarah proceeded to the national competition.



As Hawaii's Young Woman of the Year stepped out on stage fully adorned in the Tahitian costume she realized that her dancing, and the costume, were a big hit. When the results of the Talent competition had been announced Miss Lee had won one of the \$4,000 talent awards. Congratulations!

To the wonderful people of PCC,

Thank you very much for allowing me to use your beautiful Tahitian outfit. It was the "look" that helped me to win one of the four talent awards at the America's Young Woman of the Year program in Mobile, Alabama. Once again, thank you!

Love,

Sarah Lee
Hawaii's Young
Woman of the year

NEW PCC VIDEO PRODUCTION UNDERWAY

EMPLOYEE CONTEST TO NAME THE NEW VIDEO

Production began recently on a new PCC video tape. After four successful years with the "Portrait of Polynesia" video, it is now necessary to replace it with a new version that includes the many new PCC features such as IMAX, the new Night Show and the Marquesas village program.

With this ambitious undertaking the Center will expand its role in Hawaii's video tape business by producing a total of three tapes: one tape to replace "Portrait of Polynesia", a complete tape of "*Mana - the Spirit of our People*" and a dance instruction tape.

With the production of a new video comes the task of giving it an appropriate title. To get all of the best ideas we are having a **contest to NAME THE VIDEO**. The tape will be 60 minutes and its content will include an historical look at the Polynesian Triangle and how the Polynesians eventually came to Hawaii. A significant portion of the tape will showcase each of the major Hawaiian Islands, finally focusing on Oahu and her attractions as the modern gathering place of Hawaii. The final portion will explore the Polynesian Cultural Center as the modern gathering place of Polynesia.

The marketing strategy behind this tape is to give the visitor a tape that shows all of the beauty of Hawaii (to compete with other Hawaii tapes), but also give them an indepth view of Polynesia and the State's foremost visitor attraction. If someone comes to Hawaii and only buys one video, they can get it all on our tape.

To enter the contest send your idea for a title to the Video Sales Department. **The winner will get 4 free movie passes and a free copy of each of our three new tapes as soon as they are available.**

Theater Corner Stage Crew Worker To Be An Olympic Assistant Coach

Xiaodong Jiang recently received a "once in a lifetime" opportunity. She has been asked to travel to the U.S. Olympic Training Center in Colorado Springs to work as an Assistant Coach at the United States Gymnastics Federation Rhythmic Summer Camp.

This camp will help instruct the Gymnastic Team hopefuls for the 1992 Summer Games.

Two camps for 20 girls will be held from August 15 - 19 and on August 24-30.

According to her fellow workers Jiang is "very dependable" and "a very hard worker". We all wish her well as she accepts this great opportunity.



-Employee Benefit Update-

Rental Car Discount from **AVIS**



PCC employees are eligible to rent an Avis vehicle anywhere in Hawaii at net rates.

Cars must be booked in advance and must be done either through the Laie Reservations Office at 293-3333, or the Waikiki Sales Office at 923-2911.

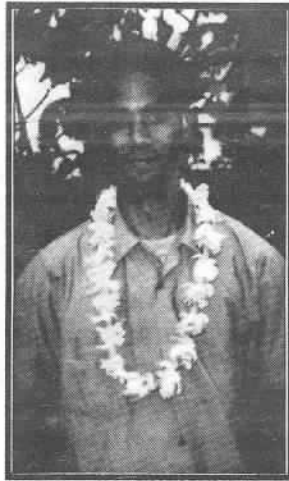
Important!

In order to rent a car you must have a valid drivers license, you must be over 21 years old and possess a major credit card.

further information, please contact either the Laie or Waikiki reservations offices.

Operations Department Employee of The Month

Congratulations to **MICHAEL AKI** for being chosen as the Operations Department June Employee of the Month!



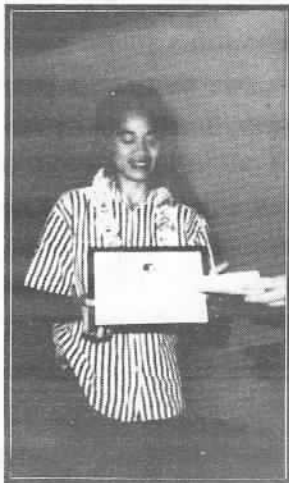
Michael has been an employee here at the Center, as a Groundskeeper, since December 11, 1979. You can always find him working hard in the front parking lot on the Hauula side, and in the boat cleaning the lagoon. He continuously shows outstanding work performance as well as excellent attendance.

Michael is no stranger to winning this award. Last year he was chosen twice as the Employee of the Month and also won the Operations Department Employee of the Year award.

We congratulate MICHAEL AKI on winning this award and thank him for his dedication to his work.

Student Employee of The Quarter

Congratulations also to 'Emeli Lui of the Custodial Night Shift for being chosen as the **Student Employee of the Quarter** for the Operations Department.



'Emeli is our student employee on the Night Shift that has been with us the longest. She was hired in June 1990 and is a sponsored student from Tonga. 'Emeli takes care of the cleaning of our Maintenance building and helps clean the Theatre after the Night Show.

Congratulations again to 'Emeli Lui for being chosen as the Student Employee of the Quarter.

Special Projects

Now has
Hawaiian Airlines

Coupons for
\$41 each



and

**Consolidated
Movie Tickets**

for

\$4.00

SECURITY REMINDER!



**TO ALL PCC
EMPLOYEES**

Please be reminded to use only the marked car stalls to park your vehicles in. Some employees wanting to park closer, are parking out of stalls, near islands, and curbing, and are making the situation very hazardous at the employee parking lot.

We at Security thank you very much for your consideration when parking your vehicle.

MAHALO