



Polynesian Cultural Center

# UPDATE '90

Employee Newsletter

Thursday, August 16, 1990

## Promo Team Goes To Peoples Republic of China!

Led by Staff Vice President Cy Bridges, the Center has taken a promo group to the First China International Folk Art Festival in Beijing and surrounding cities.

Accompanying the group from BYU-Hawaii is Dr. Charles Goo.

Others in the group include:

**Technical Director:** Sione Pasi

**Sound Technician:** Miller Solial

**Stage Director:** Ellen Gay DelaRosa

**Costume Manager:** Elisa

Teriipaia

**Props Manager:** Tasele Tiatia

**Musicians:** Lamar Benevides, John Maka Cummings, Dallin Muti and Dorothy Faasou.

**Dancers:** Dean Kapu, Bill Keni, Nephi Prime, Rapi Satoa, William Tenney, David Tiave, Mili Atuaia, Mechelle Carroll, Bobbie Crowell, Aurie Kekauoha, Kim Mitchell, Mele Tanuvasa and Cathy Teriipaia.

**Fire Knife Dancer:** So'o Tufaga.



The group has been met by many dignitaries and even a few of the Chinese interns that have trained here at BYU/PCC. The group seems to always be "on camera". Cy reported on August 14th that everyone is in good health and enjoying their "new" experiences in China.

From a report sent back on August 9th, Cy Bridges reported that spots of our video "Portrait of Polynesia" had been shown over Chinese national television so they were greeted with reporters, cameras and lots of people.

Our group will be in Beijing for approximately 12 days until they continue with a tour of the country.

## In This Issue

- New Timecard System Explained
- Concessions "Outstanding Achievers"
- America West 20% Discount
- Trivia
- Employee Menu

**Deadline for the next  
UPDATE is Tues. Aug. 27.**

## MIS Corner

# New Time Card System

### **What is It?**

The time clock system is an on-line time and attendance system for gathering, preparing and reporting and a magnetic card reader which will replace the Kronos Timecard system. This system was conceived by and programmed for the Center's use by Fred Camit, manager of the MIS department.

### **Why is It going to be used?**

It will allow you to keep your ID with you at all times. The system is cost effective because the general terminals cost less than the specialized timeclocks and less paperwork is generated. Also, we will not have to punch in and out at the same place as the terminals can be placed in many locations.

### **How do I use it?**

You simply pass your new employee ID through the reader to punch in or out. As you pass your card through the reader, the computer will display your name and department with the time of day you punched in. To review your punches for the current period you can simply pass your ID through the reader a second time.

All adjustments to your punches, vacation, holidays, and sick leave can easily be done by your department's timekeeper each week. Any questions about your punches can be directed to your department timekeeper.

Messages can be sent to individuals or entire departments through the system to notify employees about meetings, schedules, reminders, etc.

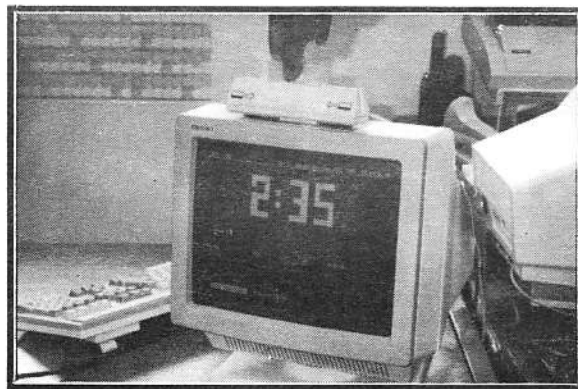
An employee scheduling system will also be a part of the time clock system which will allow timekeepers and managers to better track employee schedules.

### **When Can I Use It?**

A few departments are already testing the system. The cutoff date for all employees to have their ID's replaced is August 20. (There is no charge to have your ID changed to include the new magnetic strip). The scheduled cutover date for the new timecard system for all employees is September 9 (Pay period #20). On that date, the Kronos timeclocks located upstairs in the laundry will no longer be used, so remember to have your ID replaced.

### **Where will I punch in?**

Your timekeeper will instruct you where you may clock in and out.



### **Questions:**

#### **Where can I get my ID changed to include the new black magnetic strip?**

The Human Resource secretary can replace your old ID for the new one at no charge.

#### **What if I lose my new ID?**

It will still cost \$5.00 for a new one to be made at the Human Resource office.

#### **How can I punch in if I leave my ID at the Laundry?**

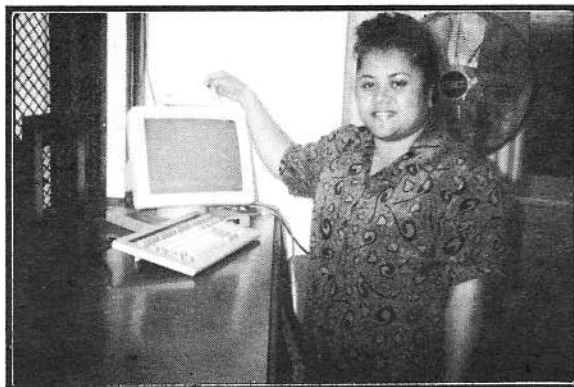
The Laundry will also be using the magnetic card readers to keep track of the location of your uniform. To use the system, you simply give your ID to the laundry worker who will pass your card through the reader to check for your uniform. If everything is in order, the laundry worker will issue your uniform and will return your ID. You will need to present your ID again when you return your uniform.

#### **What happens if the time card reader doesn't accept my ID?**

The Human Resource department can fix it for you at no charge.

#### **What happens if the computer goes down or the power goes off, how will I punch in or out?**

When the computer system or power is restored, your timekeeper will enter your punches through the computer.



# 20%

## Discount on America West Airlines for PCC Employees!

As a mahalo to the Center for working closely in Promotional experiences, America West Airlines is pleased to offer a 20% introductory discount to all employees of the Polynesian Cultural Center. In order to qualify for this discount you must travel by December 15, 1990. The employee must provide America West with a company I.D. or a letter verifying their employment. The employee must travel. Immediate family (spouse, children, parents, and grandparents) may travel with the employee with a letter verifying family relationship.

To get this great discount follow these simple steps:

1. **Call in your reservations normally to their Reservations office at 1-800-247-5692.** You do not need to tell them you have a discount.
2. Obtain the **record locator number** for your reservation.
3. **Call the Honolulu Ticket Office 971-2810,** and advise America West of you employment at the Center and of the record locator number of your reservation.
4. **Follow instructions from America West on ticket payment and pickup.**

### Conditions:

- \* Travel must originate in Hawaii
- \* The 20% discount applies to any published fare available on America West Airlines; discount fares, full coach, business class or first class (where applicable). Discount is not available to interisland flights.
- \* All rules governing the applicable fare apply, regarding advance purchases, payment requirements or other restrictions.
- \* All employees who are not members will be enrolled in America West's frequent flyer program, Flightfund, and receive the following:  
Enrollment bonus of 2,500 miles  
One time 5,000 for one-way trip from Honolulu to the Mainland

# FINAL NOTICE TO REGISTER

## VOTE 1990

### A Little Vote Makes a Big Difference!

You can register to vote right here at the Center. The Human Resource department is providing VOTER REGISTRATION. You don't have to go to registration stations throughout the state.

If you fit into one of the following descriptions or classifications, you need to (re) register by filling out the form at the Voter Registration boxes posted throughout the Center:

- you moved to a new address (since the last election) within the same district.
- you moved to a new district since the last election.
- you turned 18 years old since the last election.
- you became a naturalized citizen of the United States since the last election; and
- you are a U.S. Citizen but have never voted in any election.

After filling out the form turn it in directly to Sam Langi in the Snow Administration Bldg. downstairs in the Business Office.

**Deadline for the Primary Election Registration is August 23rd.** The deadline for the General Election Registration is October 30th.  
Thank You.



## Concessions Corner

# Employee Notes

**Wallace Wong**, son of Hoi San and Lai Ling Wong has also been recognized as an **"Outstanding Achiever"** from Concessions department. Wallace is a resident of Quebec, Canada. He has been with the department for approximately 5 months and has been recognized for his consistent performance on sales and service. He works with speed, efficiency and accuracy which contributes to higher sales. Wallace's past time activities involving reading suspenseful books, going to the movies and playing volleyball. Physical Science and Math are his favorite subjects in school. Wallace, currently a Sophomore at Brigham Young University-Hawaii, is studying Travel and Hotel Management. We congratulate Wallace on his success also.



**Shinako Adachi**, daughter of Yasuhiko and Ritsuko Adachi and a resident of Fukuoka, Japan was recognized as an **"Outstanding Achiever"** in the Concessions Department. Shinako has worked with the department for a little over a year as a student, Concessions Worker. Her major responsibility is to work with sales and service our guests. Shinako was recognized for consistency of a pleasant attitude, efficient service to all, excellent attendance and overall commitment to serve. Shinako is a Sophomore at Brigham Young University-Hawaii, majoring in Speech Communication and Human Resources. Effective August 27, Shinako will be working in a new position as a Student Lead (supervisory position) for New Zealand Snack Shop. Prior to attending BYU had 3 years of computer programming experience. Job requirements were to create a training manual and implement the training. We are proud of Shinako's achievements and wish her all the best in the future.



**Toflamoa Tulpolutu Nalesoni**, daughter of Mosese and Ana Nalesoni has also been recognized as an **"Outstanding Achiever"** from the Concessions department. Tofi comes from Ha'ateiho, Nuku'alofa, Tonga. She's a biology major with Chemistry and Math as minors. Tofi is a Sophomore at Brigham Young University-Hawaii. She has worked in the department for a little over a year. Her favorite subject is Math but prefers the challenge of Biology. She loves reading and meeting with friends. Tofi has been recognized for her consistent dedication and commitment to her job, excellent attendance and a willingness to serve all. Her current position entails the cleaning of grounds surrounding the Kaukau Snack Shop and working in sales. Effective August 27, she will be promoted to a Student Lead position overseeing the sales area of the Kaukau Snack Shop. We congratulate Tofi on her success and wish her much happiness and success in the future.



**Masumi Suzuki**, daughter of Tamotsu and Mie Suzuki from Akita, Japan has also been recognized as an **"Outstanding Achiever"** from Concessions department. Masumi is a Junior in English at BYU-Hawaii and is majoring in English. Masumi is well known for her effectiveness and efficiency in the production of chocolate dipped bananas for sales. Her dedication, commitment to work, excellent attendance and attitude contributed to her receiving this recognition. Masumi's past time activities include listening to classical music, cooking and playing the piano. She enjoys all of her classes. When asked, "Why was it important to work?" She replied, "It's a place to learn how to fulfill our responsibility and cooperate with others." We congratulate Masumi on her achievement.



**Karma Hymas**, a resident of Arvada, Colorado and also a BYU-Hawaii student has been promoted to Concessions Supervisor overseeing the sales area as of August 13, 1990. Karma is majoring in Public Relations/Communications and is a Sophomore. She has worked in the department for a year and was promoted to a Lead position a few months hereafter.

**Uini Mataele**, a student also at BYU-HI will take on a new position of Student Lead overseeing the Tahiti Snack shop, effective on August 27, 1990. Uini is majoring in Business Management. Her responsibility is to oversee the carrying out of work assignments by co-workers in the absence of the supervisor.



## Concessions Missionaries

### **Elder Terry Moeai**

Sapporo-Japan Mission  
Sapporo-shi Chuo-Ku Kita 2 Jo  
Nishi 24 Chome 245, Japan TO64

### **Sister Kathy Jones**

Ventura, California Mission  
P.O. Box 3692  
Ventura, CA 63006-3692

### **Elder Reid Green**

Portugal Mission

### **Elder Charles De Long**

California Anaheim Mission

### **Sister Chandra (Vina) Luchman**

12, rue Jacques Terrier,  
6U000 Pau, France

### **Sister Hope Vavao**

7938 South 3500 East #H  
Salt Lake City, Utah 84121

### **Elder David Allred**

Taiwan, Taipei Mission  
4 PL #24 Lane 183  
Chin Hua Street  
Taipei, Taiwan

### **Elder David Cheng**

Eugene, Oregon Mission



### **Sister Valu Ofahengaue (Returned July 1990)**

Aloha and best wishes to **Wendy Johnson**, Concessions Supervisor, who will be leaving us on August, 18, 1990. Wendy has decided to continue her education in Oregon after visiting her family in Utah. We wish her all the best in the future and thank her for her commitment and dedication.

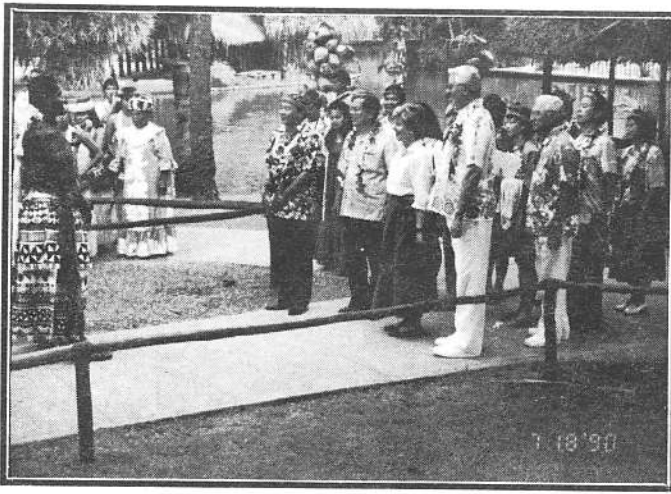
**Congratulations**  
to the Concessions  
Department! We  
have achieved  
\$1,000,000 on  
July 30, 1990 and  
we are striving for  
\$2,000,000.



## U.S. Immigration VIP's

Mr. Roger Garcia and Mrs. M. Doherty, top officials from the Immigration and Naturalization Service Regional Office in Southern California, accompanied by their families, visited the Center on Thursday, August 9, 1990.

They had an enjoyable tour through the villages, a filling dinner at the Ali'i Lu'au and an after dinner tour of the Laie Community, BYU-Hawaii, the Temple and the Visitor's Center with their host, Vice President T. David Hannemann and assisted by Laie Tour Guide Lori Atoa. Their evening was concluded with the spectacular night show.



Mr. Maan-Chyuan Jang, Director of the Taiwan Aboriginal Cultural Park, visited the Center with Taiwanese officials and educators on Wednesday, July 18, 1990. It was an honor to host this very gracious delegation who were also very hospitable to President Christensen during his trip to Taiwan earlier this year.

Key officials in this group were: Mr. Chia-chi, Legislator and leader of the cultural delegation, Mr. Ying-Hour Jow, Chief Director in the Department of Secretariat, Mr. Feng-Wu Hsia, Director for the Division of General Affairs National Palace Museum, Ms. Su-Chuan Huang, Section Chief in the First Department Council for Cultural Planning and Development, and Ms. Kuei-Chi Su, Secretary and Administrative Editor for Department of Literature and Communication Arts Council for Cultural Planning and Development. Escorting the Taiwanese were President Christensen, T. David Hannemann and the VIP guide, Rachael Chen.

In addition to the usual cultural events and activities throughout the Center, the party was favored with a special feast in the Fijian village. It was an honor to host this most impressive delegation at the Center.



## Housekeeping Corner

# Employee of the Month



## Iulai Faleolo

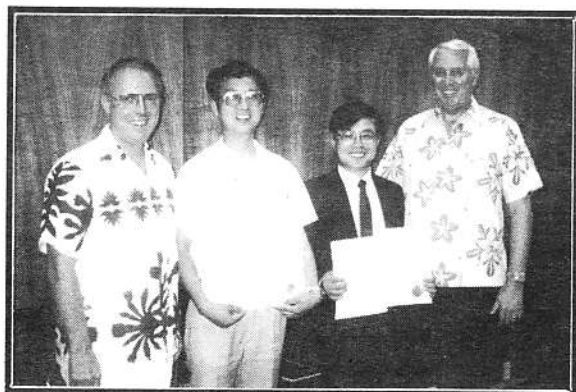
Iulai Faleolo was chosen as the July Housekeeping Employee of the Month. If his name sounds familiar to you for this award, it's because it's his second time winning it. Iulai was also the May Employee of the Month.

Iulai is a Custodian on the Day Shift. He always portrays a good attitude and willingness to go the extra mile and participates in more difficult assignments. He has the ability to see an area, note the time, and if no person is available to clean, he does it without being told. His examples of excellent attendance and promptness is shown daily. One thing Iulai has is a sense of humor. He makes his supervisor laugh even when she doesn't want to.

We congratulate Iulai Faleolo again for being chosen the July Housekeeping Employee of the Month.



## Farewell to Chinese Interns



A farewell luncheon was held for more of our Chinese Interns. The interns will not be leaving until the end of the month, but since President Christensen will be off-island he wanted to give them a luncheon of appreciation for the interns.

The interns who will be leaving are Bai An Ping and Gong Guijun (shown above with President Christensen and President Wade) and also Shao Gooliang and Zhang Shuqin who were not available for the luncheon.

At the luncheon the interns were treated to a delicious meal and were given an opportunity to express their feelings about their experience here. Both expressed deep feelings for the Center and for BYU-Hawaii. Both interns also expressed a desire to continue the good relationship which has been developed with people here at the Center.

Each intern was given a certificate from both PCC and from BYU. The certificates are to show that the interns have completed the training program they came here for. Interns also take classes at BYU-Hawaii while gaining practical experience here at the Center.



## EMPLOYEE MENU

### Friday, Aug. 17

Chicken Stew  
Potato Salad  
Steamed Rice  
Cold Drink

### Monday, Aug. 27

Chicken Stew  
Potato Salad  
Steamed Rice  
Cold Drink

### Monday, Aug. 20

Deep Fried Chicken  
W./ Gravy  
Seasoned Corn  
Steamed Rice  
Cold Drink

### Tuesday, Aug. 28

Teriyaki Wing &  
Drumsticks  
Seasoned Corn  
Steamed Rice  
Cold Drink

### Tuesday, Aug. 21

Beef Curry Stew  
Tossed Salad  
Steamed Rice  
Cold Drink

### Wednesday, Aug. 29

Salisbury Steak  
Steamed Rice  
Cold Drink

### Wednesday, Aug. 22

Fried Hoki Fish  
w/ Tartar Sauce  
Salad  
Steamed Rice  
Cold Drink

### Thursday, Aug. 30

Lamb Curry Stew  
Tossed Salad  
Steamed Rice  
Cold Drink

### Thursday, Aug. 23

BBQ Chicken  
Peas & Carrots  
Steamed Rice  
Cold Drink

### Friday, Aug. 31

Pork Chop Suey  
Strawberry Parfait  
Steamed Rice  
Cold Drink

### Friday, Aug. 24


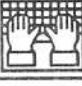
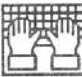

Teriyaki Pork  
W/ Natural Sauce  
Peas  
Steamed Rice  
Cold Drink

\*\* This menu is subject to change without prior notice.

## Malaysian Guests

The Foreign Minister of Malaysia, Mr. Ainuddin Abdul Hamid, his wife, Zaha, Mr. Shon, the son of the Korean Ambassador to Malaysia and his wife, Kim, were hosted by Vice President T. David Hannemann to an enjoyable afternoon and evening at the Center on Tuesday, August 7, 1990. They also enjoyed a guided tour of the villages by Ambassador Guide Kim Suk Yoo, the Ali'i Lu'au, and an after dinner tour with thier host and Lori Atoa at the Temple Grounds,(See picture at left) Visitor's Center and the evening show.

## August 1990 MIS Calendar

Sunday	Monday	Tuesday	Wednesday	Thursday	Friday	Saturday
				 16	17	18
19	Last Day to Change ID's 20	9:00 Introduction to Ready, Set, Go! (Mac)  21	22	23	24	25
26	27	9:00 am PSI Request (Reporting)  28	29	30	 31	

### Trivia!!

#### Sentence Scramble

- het ciexgtini noplysenia larutluc rtcene  
(where you work)  
*THE EXCITING POLYNESIAN CULTURAL CENTER*
- xima blpuic gniweiv teda 11/90 (when you should be able to see it)  
*IMAX PUBLIC VIEWING DATE 11/90*
- anibo kaam (our benefit specialist)
- oenac deuigs (they paddle a lot!)  
*OCEAN*
- teper upanaak (Waikiki V.P.)
- naip dalcoa (Concessions milshake)
- anivad ekal (Motorpool Secretary)
- lpalroy (Where we pick up our checks)  
*PATROL*
- nekcihc wets (Employee Lunch 8/17)  
*CHICKEN STEW*
- liag nanreffeh (Accounts Receivables)

**Look for the new TRIVIA BOX at the Employee Lounge for your answers... good luck!**

#### Rules

- First Prize - Two consolidated Movie Theater Tickets
- Second Prize - 1 Box of Chocolate Macadamia Nuts
- Open to all current PCC Employees
- Entries must be mailed/turned in to Special Projects by **Monday at 5:00 p.m.**
- Judges decisions are final.

### Trivia Results

#### Congratulations!

**Gail Heffeman**, who works in Accounts Receivable, who wins two free Consolidated Movie Tickets.

**2nd Place** was taken by Delsa Moe, Group Sales. Delsa wins a box of Chocolate covered Macadamia Nuts.

#### Trivia Answers

- Reservations Manager **FIA MAU**
- Reservations Secretary **ALII**
- Our community **LAIE**
- Bob Heywood's wife and our new Corporate Receptionist **MAVIS**
- Last name of a Vice President **PERE, KEIL**
- Name 2 members of the Tech Services Crew? **By Verification**
- Name one VIP who visited the Center in the month of July **By Verification**
- What is President Christensen's middle initial? **P.**
- Name of the former Governor of Easter Island now at the Center. **Sergio Rapu**
- Name 2 members of the Market Research Crew. **Steve Christensen, Willie Kwansing**