



August 27, 1982

update 82

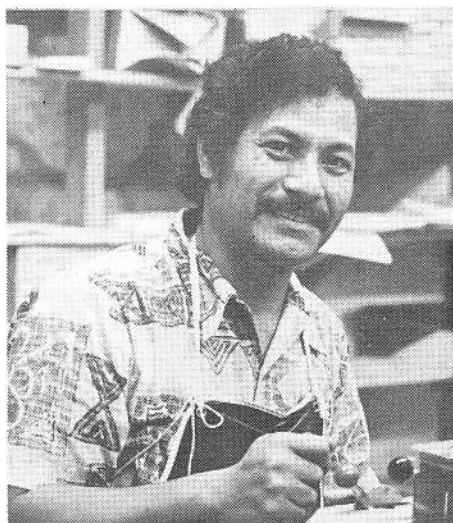
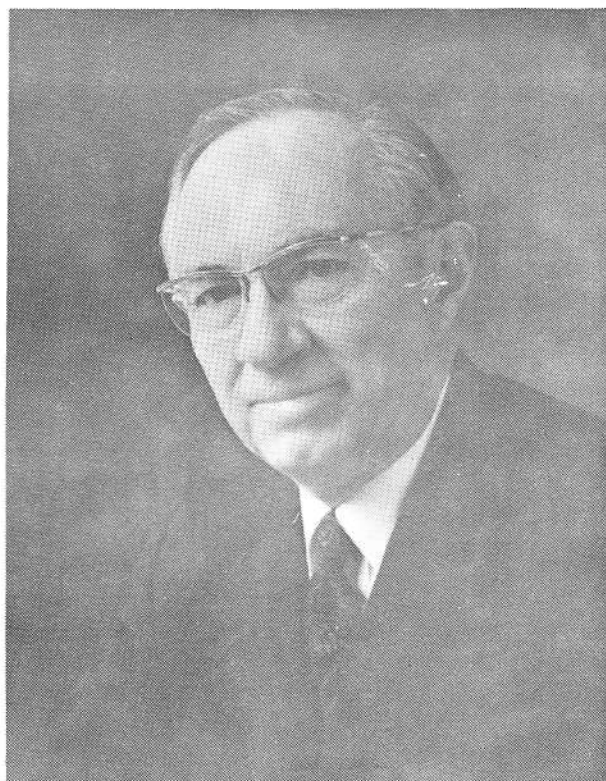
Polynesian Cultural Center

President Hinckley here This Sunday

President Gordon B. Hinckley of the First Presidency will be in our community this weekend. He is returning to Salt Lake City from Asia where he has been involved in Church business.

Accompanying President Hinckley is Elder William R. Bradford, a member of the First Quorum of the Seventy.

While in Laie, President Hinckley will preside over a special meeting for all temple recommend holders on the island scheduled for the Cannon Activities Center at 4:00 pm Sunday afternoon. Members who plan to attend are reminded to present their recommends in order to gain admission to the meeting.



New Graphics Manager

Iava Posala is the new manager of the Graphics department. He replaces Chuck Rivers.

Iava was born in Western Samoa and educated and raised in American Samoa. He attended Mapusaga High School, graduating in 1968. He worked for his family's printing company from 1969 to 1978 when he came to BYUH.

A senior majoring in Travel In-

dustry Management, he is also the 12th Ward's representative on the BYUH 2nd Stake's Farm Committee. Iava converted to the Church a year before he married his wife, Rosalia Seiuli, in 1975. They are now the parents of three daughters and a son. Working in the Center has provided a lot of printing experience for Iava, and he hopes to return to Samoa eventually after graduating.

NEWS

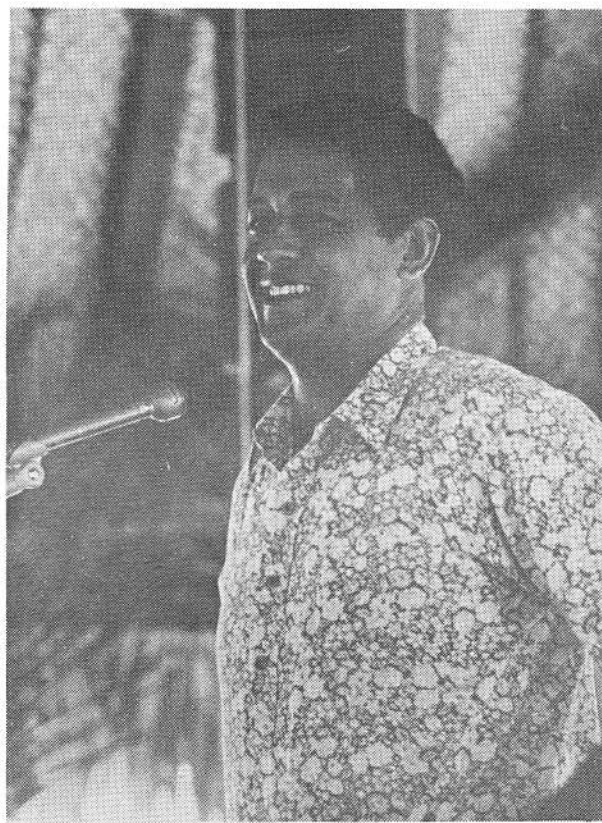
Samoan Day Sup

As these scenes show, Samoan Day this past weekend was a day of fun and activity. It was also the first time that the new Center bleachers were used to provide the crowd with a clear view of the event. New costumes added color to the day, and the villagers performance was lively and entertaining. Fa'afetai tele lava!



NEWS

er Success!!!



Introducing:

Elder William R. Bradford



Elder William R. Bradford was called to the First Quorum of Seventy October 3, 1975. At the time he was serving as president of the Chile mission.

Born October 25, 1933, in Springville, Utah, Elder Bradford studied at Brigham Young University and later went into the fruit growing and shipping business in Texas. He became president and general manager of a firm which grows citrus and tropical fruits in Mexico and Central America for distribution in the U.S.

He has served as a missionary in Japan and in numerous positions of responsibility while residing in Hawaii, Massachusetts, and Texas. He and his wife, Mary Ann, are the parents of six children.

Whodagirl???

Community Health Threat: "Pink Eye" Strikes!

A number of Center personnel have become sick recently in a widespread outbreak of Viral Conjunctivitis or "pink eye." The following medical information is from the Epidemiology branch of the State Department of Health, and we urge all employees to read it and take note of precautions that will help you to avoid it. The condition is painful and highly contagious.

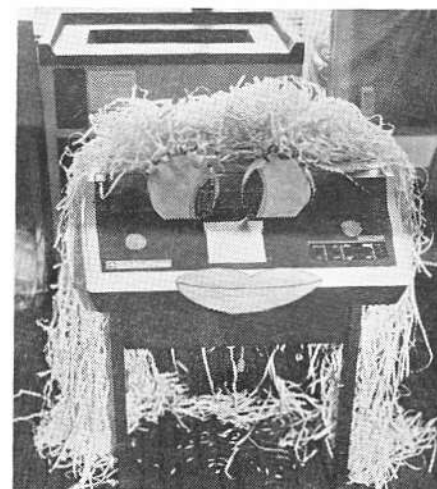
Conjunctivitis appears as a sudden onset of pain, swelling, redness, congestion, and discharge in one or both eyes, which may last up to two weeks. Occasionally there are swollen glands near the ear and/or symptoms of a cold.

Another form of the condition affects both eyes and causes mild bleeding of the "white" of the eye. This illness spreads in a matter of days. If you suspect that you have this condition you should see a doctor immediately, and the doctor is required to notify the State Health Department immediately.

Several simple health rules will help control the spread of most types of conjunctivitis:

1. Wash hands frequently.
2. Keep hands away from eyes.
3. Do not use towels to wipe the eyes. Use only paper tissues and discard immediately.
4. Do not share towels. Instruct small children not to use the towels of other family members.
5. Keep infected children out of school (and away from other crowded places) for 7 days.

If there is any question about the diagnosis, or if bleeding within the white of the eye develops, patients with conjunctivitis should see a doctor.



Meet Miss Lani Shredder, a new employee in the Business Office.

Center personnel should note that this office adheres to strict standards of beauty when it hires its staff. A full-time employee, Lani will be with the Business Office indefinitely.

Students who aspire to her job should be able to consume large quantities of paper daily.

Guides Reorganize

The Cultural Orientation department has recently reorganized its staff and announces the following appointments:

Kurt Faux -- Laie Tours
 Brian Manoa
 Tom Munson
 Dale Ward-- VIP Guides
 Alex Lobendahn
 Joseph Pouha
 Cyle Sanada -- Foreign Language
 Bret Chidester
 Doug Colbert
 Newman Soloai -- Canoe Tours
 Arapata Meha
 Peter Johnson
 Neil Rose -- Trams
 Tinoú Godinet

CORRECTION

Correction on the special Cooperative Education Update, August 25, 1982:

All Cooperative Education jobs printed for Fall 1983 should have read 1982. These jobs are for this school year.

Apologies are extended to the following people whose names were misspelled in the bulletin:

Emily Kaopua
 Afani Ho Kum
 Harvey Alapa
 Colin Shelford
 Sharon Ishii

Sincerely,
 Lucky Fonoimoana

NOTICE

Employees interested in Credit Union Thrift Club membership should contact the Personnel office and pick up a brochure of savings and membership forms.