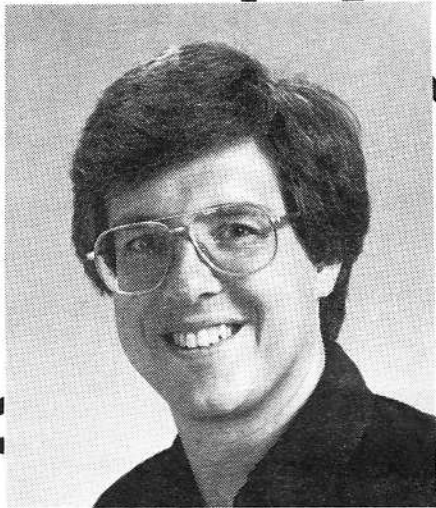




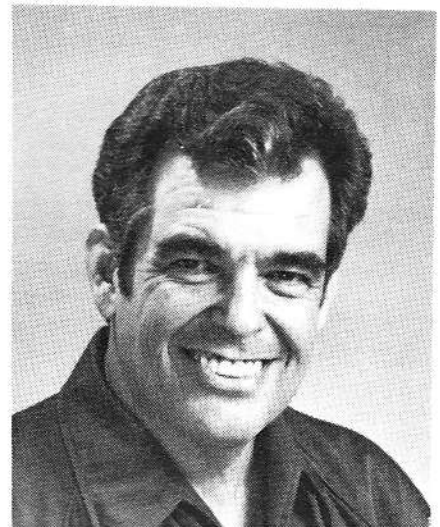
K59 personalities join in "Family Affair"
Story page 3

Polynesian Cultural Center Employee Newsletter • Laie, Hawaii • Published Weekly • August 31, 1984

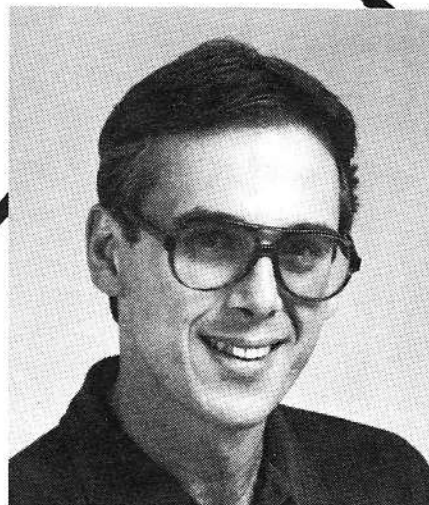
IT'S A GREAT DAY...



Michael W. Perry



Larry Price



Dick Wainwright

*Fun for
the whole
family*

Two U of U Grads accept positions



Bob Stevens

Two new employees have joined the Center's Management Team. They are Bob Stevens and Bryan Boles. Bob Stevens has been appointed as the new Employee Compensation Manager and will oversee the compensation program under the Personnel area. His areas of responsibility will include work with job descriptions, salary scales, performance evaluation and related wage and salary programs. Bob is a recent graduate of the University of Utah in Human Resource Development. He is engaged to be married on December 28 to Debbie Doxey of Salt Lake City, Utah.



Bryan Bowles

Bryan Bowles has accepted an appointment as Employee Training Manager in a co-management position with Vai Laumatia. They will be sharing responsibilities in the area of inhouse training of employees, development of skills, meeting the public and script delivery. Bryan is from Bountiful, Utah and is a 1974 graduate of the University of Utah in Speech Communications and Theatre with an Education minor. His experience includes teaching at Bountiful High School and the University of Utah.

PCC UPDATE AUG. 31, 1984

Samoans win at Flag Day

Several employees of the Samoan Village and other areas of the Center were among award winners at the Samoan Flag Day celebration held Saturday, August 18 in Honolulu. Village employees Pulefano Galeai and Fata Fiaui (BYU-HC Samoan Club President) were instrumental, along with others, in organizing the groups competitive efforts.

The group of more than 50 placed 1st in the Safa competition and 2nd in the Samoan Song Contest.

HVB President says PCC a must for Hawaii visitors

Hawaii's top tourism official attended the Center for the first time on Friday, August 24. Stanley Hong, newly elected president of the Hawaii Visitors Bureau, toured the Polynesian Cultural Center last Friday on his initial visit after many years of residency in the state of Hawaii.

President Hong, who was impressed with the clean grounds and pleasant attitude of the Center employees said, "You have made me a strong supporter (of the Polynesian Cultural Center) and I will do all I can to urge tourists to visit the Center. It's a must!" He further commented that he felt that the Center is a good example to tourists of what Hawaii is.

MONDAY	TUESDAY	WEDNESDAY	THURSDAY	FRIDAY	SATURDAY
Employee Lunch Menu					Sent. 1, 84
3 ROAST PORK BUTT BROWN GRAVY HASHED POTATOES/RICE SEASONED MIXED VEG. DRINK	4 CHICKEN CACCIATORE NATURAL SAUCE FRIED RICE TOSSED GREEN SALAD W/DRESSING DRINK	5 ROAST BEEF BEEF BROWN GRAVY FRENCH BAKED POTATOES SEASONED PEAS & CARROTS DRINK	6 STUFFED CABBAGE W/ TOMATO SAUCE STEAMED RICE SEASONED MEXICORN DRINK	7 HAWAIIAN PLATE BAKED BUTTERFISH STEAMED RICE SEASONED MIXED VEG. DRINK	8 SWEET & SOUR RIBS STEAMED RICE SEASONED HOT VEG. DRINK
10 SHOYU CHICKEN NATURAL SAUCE BUTTERED PEAS F.F. STEAMED WHITE RICE DRINK	11 SALISBURY STEAK NATURAL BROWN GRAVY HASHED POTATOES-RICE STEAMED HOT VEGETABLE DRINK	12 BEEF POT PIE HOT BAKING POWDER BISCUIT STEAMED RICE BUTTERED CORN DRINK	13 SWISS BEEF LIVER OVEN BAKED CHICKEN BROWN GRAVY STEAMED RICE-HOT VEG. DRINK	14 BRO BEEF W/ NATURAL SAUCE HOME FRIED POTATOES HOT VEGETABLES-RICE DRINK	15 BAKED TUNA & NOODLES STEAMED WHITE RICE SEASONED HOT VEG. COLD DRINK
17 PORK W/CABBAGE STEAMED WHITE RICE SEASONED HOT CORN COLD DRINK	18 BEEF STEW HOT BISCUITS STEAMED RICE TOSSED GREEN SALAD COLD DRINK	19 ITALIAN SPAGHETTI W/ MEAT SAUCE CREATED CHEESE BUTTERED MIXED VEG. HOT RICE DRINK	20 BEEF CHOP SUEY STEAMED RICE PINEAPPLE CHINKS COLD DRINK	21 HAWAIIAN PLATE CHICKEN CURRY SEASONED HOT VEG. STEAMED WHITE RICE COLD DRINK	22 DEEP FRIED CHICKEN CHICKEN GRAVY SAGE DRESSING-RICE HOT VEGETABLE COLD DRINK
24 CHILI FRANKS STEAMED RICE SEASONED MIXED VEGETABLE CHOPPED ONIONS & CELLS DRINK	25 BEEF TOMATO STEAMED RICE TOSSED GREEN SALAD 1,000 ISL. DRESSING COLD DRINK	26 DEEP FRIED MAHI-MAHI TARTAR SAUCE BAKED MACARONI W/CHEESE STEAMED RICE-HOT VEG. COLD DRINK	27 BAKED CHICKEN W/TH GRAVY STEAMED RICE-HOT VEG. CHILLED CRANBERRY SAUCE DRINK	28 BAKED MACARONI W/ ground beef STEAMED RICE BUTTERED MIXED VEG. COLD DRINK	29 SWISS BEEF W/VEG. STEAMED RICE BUTTERED HOT VEG. COLD DRINK

K59 "Family Affair"

LABOR DAY

This Monday, September 3, Labor Day, culminates the two month radio promotion with top-rated Radio K59 and the Polynesian Cultural Center. One thousand winners of the K59 "fun fact" questions will be at the Center Monday, along with radio personalities Larry Price, Dick Wainwright, Michael W. Perry, Mike Murray, Harvey Lowenstein and General Manager Earl McDaniel.

Deejays will be reporting in live during the days activities at the Center.

A twenty foot banner will be hung atop the Center entrance welcoming "Family Affair" participants and all guests. Prize winners and kamaaina

visitors will receive special stickers to wear. The kamaaina rate will be \$21 for complete packages when presenting local I.D. beginning September 3 and extending through December 22.

A special 6 o'clock evening show for "Family Affair" participants will include appearances by K59 personalities.

The Polynesian Cultural Center and K59 invite the number one radio station's 400,000 listeners to join them at the Center on Labor Day.

Center employees, let's show Hawaii the best we have this Labor Day, Monday, September 3.

National Quilting Association Recognizes Cultural Center Quilter

"Lily Kama was busy producing new quilts and pillows, passing on her knowledge to the next generation, and doing a great public-relations job for island friendliness," says Mimi Ayars for the Quilting Quarterly of the National Quilting Association, Inc. in Greenbelt, Maryland. A recent visitor to the Polynesian Cultural Center, Mimi

published a feature story on Lily Kama and the Center in the May issue of Patchwork Patter-the Quilting Quarterly. She further commented in her article that the Polynesian Culture Center at Laie, has much to offer as an important and fun place to visit with a bonus for those interested in quilting.



Tonto (Ralph Rodgers) and the Lone Ranger (Elliot Cameron) ride again (on stick horses) as they entertain BYU-HC faculty and PCC Management members at the BYU-HC faculty dinner.



Art Director Pam Bidwell and Advertising Manager Mike Foley work out the details and positioning during last weeks photo sessions for 1985 advertising campaigns.

Coconut cracking Champeaux show

The Champeaux breakfast show will again feature the Polynesian Cultural Center this Saturday, September 1, in the broadcast from the Ilikai hotel. Featured this week will be the Center's ukulele players Eddy Maiava and Johnny Tauilili as well as Lokeni Lokeni, back by popular demand doing the coconut cracking demonstration. Each couple attending the breakfast performance will be given passes for their family and another family of 4 to attend the Center this Monday, September 3.

Cultural Corner

Institute for Polynesian Studies

Marriage in Polynesia

There were basically 3 types of marriage among the Maori:

1. Of slaves and commoners without any marriage ceremony.
2. Of chiefs and nobles with celebrations, giving of presents, and feasting but with no religious ceremony.
3. Of highborn chiefs and their offspring with the marriage consecrated with religious ritual and great social celebrations.

Polygamy was practised only among the important chiefs because it was a sign of their rank and mana. The limit was usually two wives, but slave wives could be acquired in addition.

Other Polynesian cultures practiced polygamy also, but as was the case with the Maoris it was usually reserved only for those with status. The average commoner was expected to be monogamous or having one wife at a time. It is interesting that in the Marquesas certain high-ranking women could practice polyandry or having more than one husband.

Marriage in Polynesia may be summarized in the following written about the ancient Hawaiians by David Malo: "The women assisted their husband; they went with them into the mountains to collect and prepare the bark of the wauke, mamake, maaloa and breadfruit, and the flesh of the fern shoot (pala-holo) to be made into tapa. She beat out these fibres into tapa and stamped the fabrics for pau and malo, that she and her husband might have the means with which to barter for the supply of their wants."

"Extra Mile" Award



John Nauahi Sr.

Maintenance worker John Nauahi Sr. has received the "Extra Mile" award this week. He has worked with the Maintenance Department for 5 years and is from the Laie area. Maintenance Manager Harvey Alapa says that John is a very hard worker and goes out of his way to help others with their work. As supervisor of the structural laborers, John does a variety of work requiring many skills. Manager Harvey Alapa also comments that John encourages the men he supervises to help other people once they have finished their own work. Says Alapa, "He is concerned with the success of the Maintenance Department as a whole. During the revitalization of the Center he worked non-stop without complaint to make sure everything was done on time."