



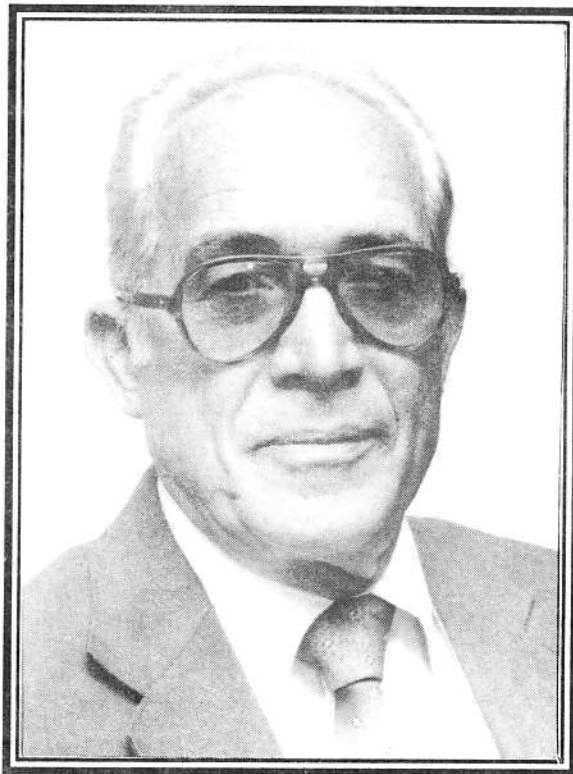
Polynesian Cultural Center

UPDATE '90

Employee Newsletter

Friday, August 31, 1990

Center Mourns Passing of Board Member Herbert Kamaka Sproat



It is with deep sorrow that we announce the sudden passing of Board Member Herbert Kamaka Sproat.

Brother Sproat passed away at his home in Punaluu on the morning of August 23rd, 1990.

After over a half century of service to his family, his church, and his community, Kamaka joined the Board of Directors a little less than a year ago.

We have enjoyed our association with Brother Sproat and acknowledge the wisdom and counsel he has given to the Center. His many visits to the Center for special functions brings fond memories from Center workers.

Funeral services were held on Tuesday, August 28th, 1990 at the Laie Stake Center. Brother Sproat was eulogized by family members, his church family, and his extended family. Following the services Brother Sproat was interred at Laie Cemetery.

Brother Sproat is survived by his wife, Kapua, and two sons and two daughters who are grown. Our collective condolences go out to family and friends of this great man.

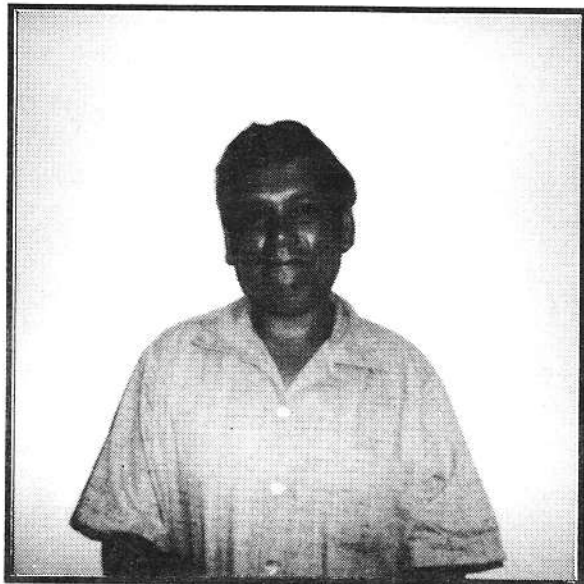
In This Issue

- Bolshoi Ballet
- IMAX® UPDATE
- New HOST General Manager
- Housekeeping Kokua Award
- Aloha Week Ribbons for Sale!
- Trivia!!!

**Deadline for the next UPDATE is
Tuesday September 11, 1990**

Housekeeping Corner

Kokua Award



John Kaina

This past month has been an unusual month for Housekeeping Custodian John Kaina. While doing his regular duties, John was close enough to the Tonga Restroom to handle a small container fire. Much thanks to his quick decision making, the fire was under control immediately.

John was also the first to report the theft of money from the tooth-brush machines by alerting his Supervisor immediately.

And yet one more incident, John found keys for a very important area and turned them in to his Lead person. He almost read her mind.

John was always exactly where he is supposed to be and though he has not been with the crew long, he adapts quickly to area assignments.

We would like to award John Kaina our Kokua Award for his actions in the above mentioned incidents.

We appreciate you very much!

Jake & the Fat Man Director Visits

Michael Lange loved the Center after visiting earlier in the year and decided to bring his mother through the Center before returning to the mainland. The production will soon be filming there rather than Hawaii and Mr.

Lange & his family were so impressed with the PCC that he wanted to visit again. Erani Kerrupiah was their guide and the group was accompanied by T. David Hannemann, Guest Services Vice-President.



The director was very touched by the spirit prevailing at the Center and thoroughly enjoyed his time on the grounds, the dinner and the evening show.

To All PCC Employees:

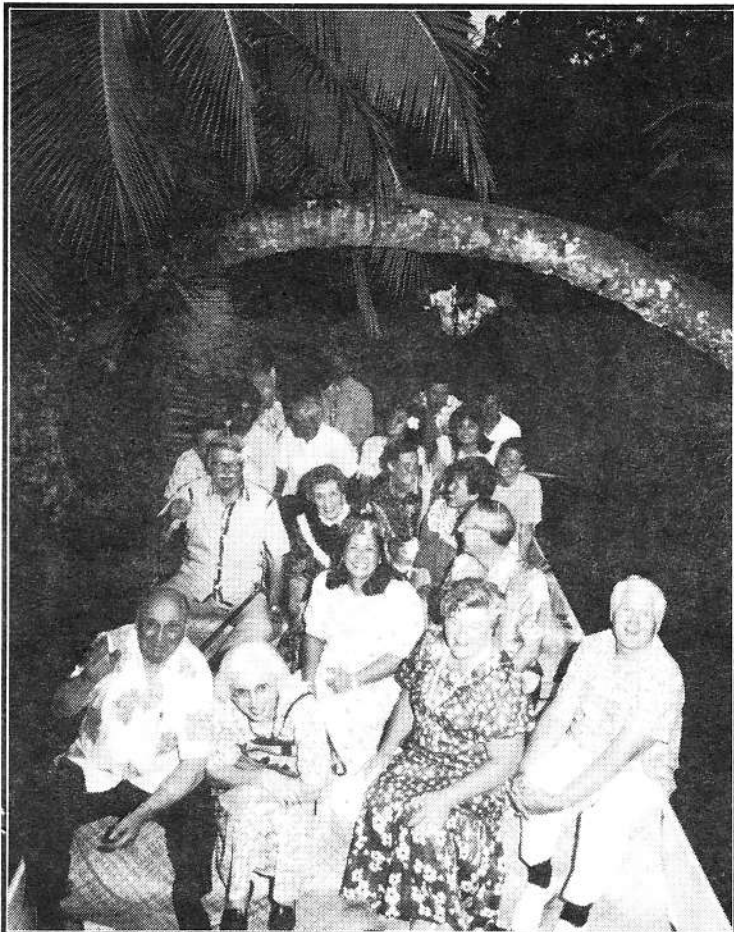
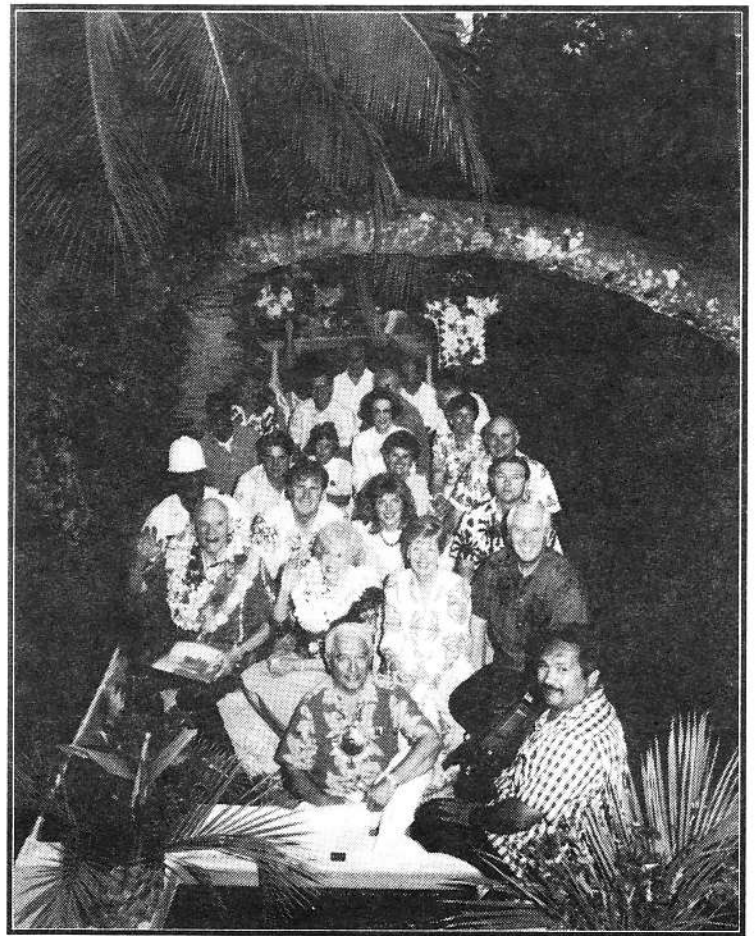
Fellow employees, may we remind all of you as you enter the Center grounds to work, please remember who and what you represent. The Polynesian Cultural Center is a wonderful and picturesque experience. However, when our appearance draws attention rather than complimenting our surroundings, we need to ask ourselves are we observing the Dress and Grooming standards of the Center.

As a condition of employment we agreed to abide by those standards, if you're not sure what those standards are, ask your supervisor.

Mahalo.

Elder Hunter Invited To Participate In Board of Director Activities

As part of the Board of Director Activities, the Hunter's were given an honorary tour of the villages. At each stop a small token of respect and love was presented to the Hunter's. President Hunter reacted by repeating, "Wonderful...Just Wonderful!" Sister Hunter, this is her first trip to Hawaii, was overwhelmed and was overcome with joy at the love she felt from the employees of the Center



A Safer Place To Work!

Injuries are down! The First Aid Department wants you to know that employee injuries for the first six months of 1990 show a **48%** improvement over the same period in 1988. Congratulations for making our workplace a safer environment.
Mahalo.

Finau, Dale & Sonny
Security/First Aid
Newman Lake, Manager

Village Corner

Tongan Culture Week



The Tongan Culture week was highlight of Center activities last week. Their dances and music captured the hearts of the tourists including their special guests as the village workers put all their efforts to emphasize the spirit of oneness. The main demonstration of the week included the tapa cloth demonstration, traditional wedding ceremony followed by traditional dances.

Their devotional was on of the beautiful occasions that have ever taken place in the village. Representing speakers from the villages were Eseta Toelupe and Lupe Akau. Fasi Tovo represented the community and the closing remarks were given by President Christensen and Kamaka Sproat, member of the Board of Directors. A special thanks was given to the Vice President Cy Bridges and Pulefano Galea'i for all their support which made our week a very special one. Last, but not least, a special thanks is given to chief Manase Nau, Sione Latu and the Tongan Village workers for their dedication and fine spirit which resulted in a week that was full of memories.

A big Mahalo to all of the Village workers and community members who helped out to make this week a great success.

Village Corner

Employee Notes

The Villages wish to welcome all our old timers, new summer workers, and BYU/GIA students aboard.

Hawaii

Lynette Atuaia
Theresa Rivers
Nanette Fabricius
Aaron Kaonohi
Kalani Shelford
Lana Goodwin
Leilani Lawrence

Fiji

Noa Salaba
Apolosa Gucake
Arieta Tuitoga
Lauola Puta

Auxiliary Area

Dorothy Wright

Tonga

Matu Kelikupa
Lusitania Tongi
Paea Veikoso
Siosi Makaafi

Tahiti

Apelu Apelu
Yolande Tehina
Walsyner Simram
Mika Taua

Maori

Kaita Tatuava
Aidarene Jessop
Faite Niutupuivalu

Samoa

Peresetne Afoa

Our Old Timers

Kim Makekau
Kapeneti Tafiti

Farewell and Mahalo for being with us sharing your talents and cheerful spirit. We wish you luck in your new venture in life.

Apelu Nauma - Samoan Village
Rotahi Kenagy - Tahitian Village
Sylvana Johnson - Tahitian Village

Maintenance Corner

Employee of the Month



Peter Tailele was chosen as the employee of the month for June 1990 from the Maintenance Department.

Peter started working for the Center in 1984, for one year, as a Concession worker and stock clerk. He returned to PCC in 1987 as a Groundskeeper. He was transferred to be a Landscape Gardener six months later. This past April, he was transferred again to be a Maintenance Worker under the supervision of John Nauahi.

His former supervisor, Lea Yatlee, was sad to see him transfer out of her crew as he was one of her main landscapers. He is responsible for many of the beautiful landscaped areas you see throughout the Center.

His present supervisor expressed that Peter is a very good worker. He is always well groomed and in uniform, and on time to work. He is reliable and is willing to do anything asked of by his supervisor. He gets along well with his co-workers.

Peter is married to Vaaiga (Laumatia) Tailele and is the father of two girls. He is in the Laie 8th Ward and is an avid sports fan.

20%

Discount on America West Airlines for PCC Employees!

As a mahalo to the Center for working closely in Promotional experiences, America West Airlines is pleased to offer a 20% introductory discount to all employees of the Polynesian Cultural Center. In order to qualify for this discount you must travel by December 15, 1990. The employee must provide America West with a company I.D. or a letter verifying their employment. The employee must travel. Immediate family (spouse, children, parents, and grandparents) may travel with the employee with a letter verifying family relationship.

To get this great discount follow these simple steps:

1. **Call in your reservations normally to their Reservations office at 1-800-247-5692.** You do not need to tell them you have a discount.
2. Obtain the **record locator number** for your reservation.
3. **Call the Honolulu Ticket Office 971-2810,** and advise America West of you employment at the Center and of the record locator number of your reservation.
4. **Follow instructions from America West** on ticket payment and pickup.

Conditions:

- Travel must originate in Hawaii
- The 20% discount applies to any published fare available on America West Airlines: discount fares, full coach, business class or first class (where applicable). Discount is not available to interisland flights.
- All rules governing the applicable fare apply, regarding advance purchases, payment requirements or other restrictions.
- All employees who are not members will be enrolled in America West's frequent flyer program, Flightfund, and receive the following:
 - Enrollment bonus of 2,500 miles
 - One time 5,000 for one-way trip from Honolulu to the Mainland

Village Update

Fiji Promo Assignment at the Hilton Hawaiian Village



A lively and entertaining group from the Fijian Village have been performing dance, cultural crafts, singing and making everybody around them happy every Tuesday afternoon at the Hilton Hawaiian Village Hotel. This is part of an ongoing promotional effort by the Center.

There have been good turnouts to all three of their shows each afternoon.. The guests were very interested in learning how to make headbands, birds and fish out of coconut leaves. They also participate willingly in the taura-tale (bunny hop) and derua bamboo demonstrations. A traditional Fijian fashion show was performed each time. This show featured the chiefly attires, the warriors costume, and the modern day attire introduced by the missionaries.

Our plantation boys demonstrated the coconut husking, tree climbing and fire making. A big vinaka vakalevu to all of them especially Pili McFall who dressed up as our Turaga Levu. Pili makes a handsome chief.



New Mission President's Visit Center En Rout To New Assignments

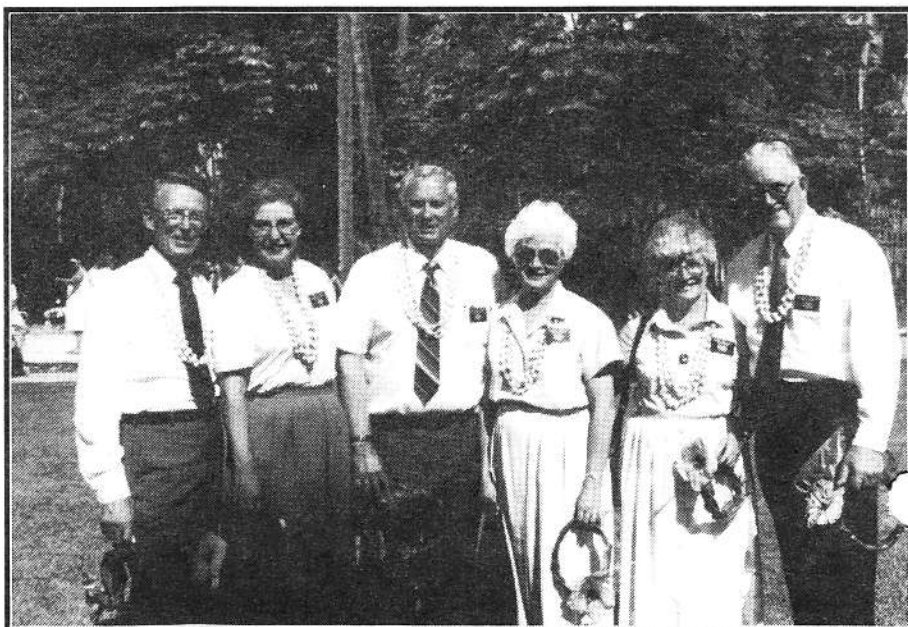
Three pairs of new mission presidents found there way to the Center during the last week of June on their way to their mission assignments.

Although these were new mission presidents, they were not new to members of the Polynesian Cultural Center family.

Most workers will remember the Treglowns who served their last mission here at the Center. They are on their way to Samoa as the new mission president.

Many of our Fijian workers remembered the Harper's who recently served a mission in Fiji. President Clyde Harper and his wife Vonda are on their way back as the new missic presidents.

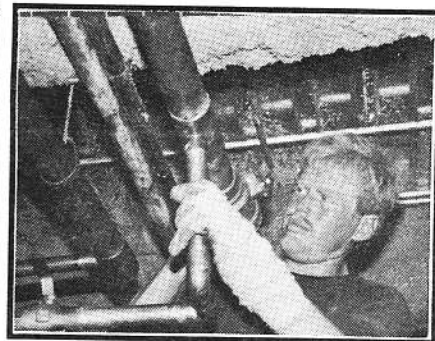
We also welcomed President Charles Lloyd and his wife Alta who were on their way to be the new mission president of the Aukland, New Zealand Mission.



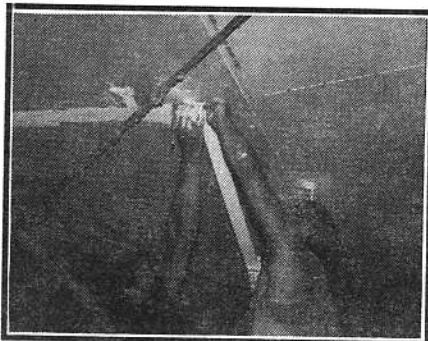
IMAX® UPDATE

by Robert L. Heywood
Project Representative

"Momentum is Building" was the comment of Russel Sabin, field architect, as he reviewed the progress of the construction.



The structural steel is basically complete. Ceilings are being installed, fire protection is underway, chiller lines



and metal air conditioning ducts are being assembled, electrical power to the main transformer was fired up the 5th of August. The mason has completed his work with the plasterer crowding for space to complete the finish stucco on the outside of the monumental building. The roofer has completed his base sheet and the building is in the dry! Sub-contractors are flooding any working space available to insure a completion date by the end of the year.

Bolshoi Ballet Visits Center








On Tuesday, August 28, 1990 the Center had the privilege of hosting the world famous Bolshoi Ballet touring company. The ballet company is currently on a U.S. tour. This tour has just a few stops so we are very fortunate indeed for them to come to Hawaii.

The group was split into several other groups due to the large number who came. Shown at right is a group in the Hawaiian Village with Alfred Grace, Delsa Moe, and workers in from the village.

While at the Center some of the performers actually got into costume and tried to learn the dances. Pictured at right in the Hawaiian Village is the Bolshoi's own Prima Ballerina (best) Ludmyla Semenkala trying to learn a little hula.



September MIS Classes

Sunday	Monday	Tuesday	Wednesday	Thursday	Friday	Saturday
	Labor Day! 	9:00 PSI Basic Operator Training 				
2	3	4	5	6	7	8
9	10	9:00 Introduction to Harvard Graphics 	12	13	Pay Day! 	15
16	17	9:00 Introduction to DeltaGraph (Mac) 	19	20	21	22
Autumn Begins		9:00 PSI FYI?MB 			Pay Day! 	
23	24	25	26	27	28	29

Trivia!!

Look for the new TRIVIA BOX at the Employee Lounge for your answers... good luck!

L H O J A N I A U M
D A R L E N E E U S
F W B T Y D N I C Y
I A L O H A W E E K
J I A N R A N I L O
I I U G F D P A V A
A I K A U A K A U K
E L L E N G A Y L I

Find and Circle these words:

Ai	Aki	Aloha Week
Ava	Celva	Cindy
Cy	Darlene	Ellen Gay
Fiji	Fun	Hawaii
J. Muaina	KauKau	Koa
Labor Day	Lau	Pa
Rani	Sue	Va
Tonga		

Rules

- First Prize - Two consolidated Movie Theater Tickets
- Second Prize - 1 Box of Chocolate Macadamia Nuts
- Open to all current PCC Employees
- Entries must be mailed/turned in to Special Projects by **Monday at 5:00 p.m.**
- Judges decisions are final.

Trivia Results



Congratulations!

Gil Obina, who is the Purchasing Manager, wins two free Consolidated Movie Tickets.

2nd Place was taken by Kini Tokallagi, a Night Show performer. Kini wins a box of Chocolate covered Macadamia Nuts.

Trivia Answers!!

1. het ciexgti noplysenia larutluc rtcene
The exciting Polynesian Cultural Center
2. xima blpuic gniweiv teda 11/90
Imax public viewing date
3. anibo kaam (our benifit specialist)
Obina, Maka
4. oenac deuigs (they paddle a lot!)
Canoe Guides
5. teper upanaak (Waikiki V.P.)
Peter Ka'anapu
6. naip dalcoa (Concessions milshake)
Pina Colada
7. anivad ekal (Motorpool Secretary)
Davina Lake
8. lpalroy (Where we pick up our checks)
Payroll
9. nekcihc wets (Employee Lunch 8/17)
Chicken Stew
10. liag nanreffeh (Accounts Receivables)
Gail Heffernan