



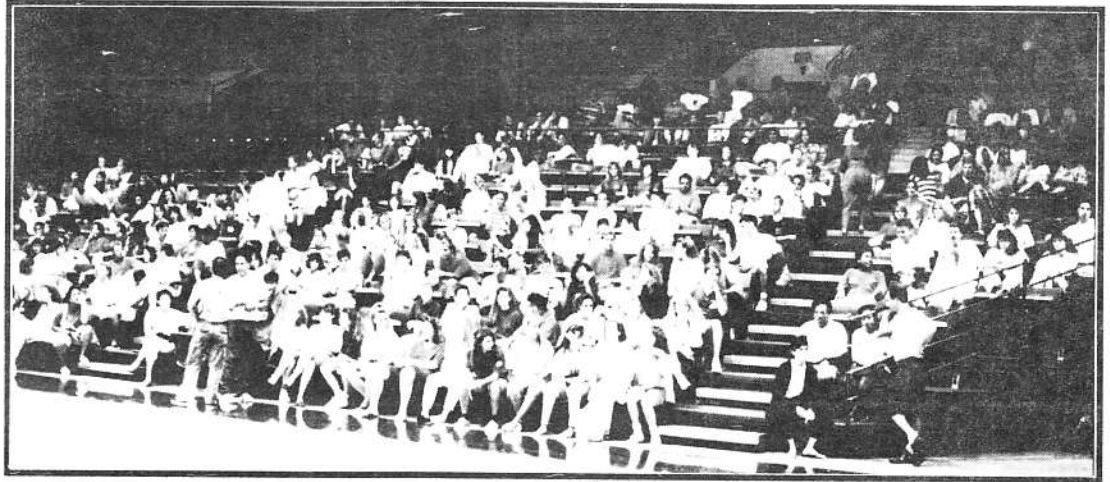
Polynesian Cultural Center

# UPDATE '91

Employee Newsletter

Friday, September 13, 1991

500  
New  
BYU



*Some nearly 500 new BYU-Hawaii students gather in anticipation of their evening at PCC.*

## Students

It's that time of year again! Nearly 500 new BYU-Hawaii students received their first PCC experience on Tuesday, August 27th. Accompanied by BYU-Hawaii President, Alton Wade, the students had an "island style" buffet meal served in the Samoan Village. During welcome speeches, both President Wade and President Shumway welcomed students and challenged them to make the most of their experiences while they are here.

The entertainment was provided by a Promo team from the Villages. The students were treated to dance numbers from Tahiti, Hawaii and New Zealand.

After the singing and dancing the whole group got to experience "Polynesian Odyssey" in the HawaiiMax Theater. After the movie all 500 students went on to see "Mana, The Spirit Of Our People".

Many thanks to all the Food Services employees who worked so hard to provide a great meal. Thanks also to Special Projects for coordinating this annual event.

*Aloha 'Oe  
Bryan  
Bowles!*



Most Center employees were shocked to hear earlier this week of the resignation of Cultural Productions Vice President W. Bryan Bowles. This surprise announcement came during Management Team meeting last Monday.

Bryan came to work here at the Center in August of 1984 as a the Training Manager. He has been a Vice President since the beginning of 1986. He has also most recently been the Bishop of the Laie Second Ward.

Bryan and his family will be leaving for the mainland later tonight. See pages 4 and 5 for a special employee farewell to Bryan.

## Here Comes The Judge

Former dining lanai busboy, night show Fijian dancer, Laie tram guide supervisor, Waikiki office evening shift reservationist- Bode Amilale Uale - was recently appointed and sworn in as a Family Court Judge by Supreme Court Chief Justice, the Honorable Herman T. F. Lum in his chambers.



Graduating with honors from BYU-Hawaii, Judge Uale also served an internship with a U.S. Representative in Washington D.C. and graduated from Richardson Law School, University of Hawaii. He also served five years with the office of the Public Defender and a year and a half in the Private Sector.

"I'm just a Laie boy with a dream and strong family support. We are gradually moving from the field of Athletics, into medicine, Law, the Arts and Sciences. We must not lose sight of our dream, (goals) however long it might take."

Judge Uale is the first of Samoan ancestry, appointed to the bench in the State of Hawaii; a returned missionary from Samoa, he is married to Beth Piilani Parker also alumni of BYU-Hawaii. They are the proud parents of three sons and a daughter.



## Operations Department Employee of the Month

Congratulations to **Hike Tevaga** for being chosen as the Operations Department July Employee of the Month!



Hike has been an employee here at the Center, as a Custodian since 1978. You can appreciate the fine work he does every day cleaning the Pacific Pavilion.

Hike is well liked among his fellow workers and is a very talented musician as well.

Congratulations again to HIKE TEVAGA for being chosen the Operations Department July Employee Of The Month.

## Mahalo!

On Tuesday, August 13th, Michael Aki of the Grounds department found a black waist pouch while cleaning the front parking lot. He immediately turned it in to Security. The owner of the pouch is a student at BYU-HI who told Security that it was stolen while he was at Pounders beach a few days before that. Though the currency was missing, the owner was very happy to find that his travelers checks, I.D.'s, credit cards, and important papers were still there. He was very thankful for Michael turning in the pouch.

It is honest and trustworthy employees like Michael that make PCC an enjoyable place to visit as well as work. Thank you Michael for setting such a fine example.



# 100 Club Gets New Members

"Welcome Aboard" to our 22 newest members of the Gateway 100 Club:

Selu Afalava, Jared Aplaca, Heidi Goodwin, Pina Heuea, Faimafili Lauulu, Claudine Leung Choi, Russel Tai Hook, Sataele Talapa, Polua Tanuvasa, Suli Tevaga, Ellen Toelupe, Melanie Tolleson, Richard Tolleson, David Tovey, Scott Walker, William Wallace, Suzanne Ward and Latai Worlfgangramm.  
*To the rest of the ohana keep trying!!!*



# Food Service Manager Certifiable!

Food Service Manager, Max Purcell, shown here at the above Gateway 100 Club luncheon, has recently successfully completed the Foodservice Management Professional exam and earned

his FMP credential from the Educational Foundation of the National Restaurant Association.

It shows his expertise in the foodservice industry and demonstrates a high level of education and experience. Congratulations!



# Village Corner Promo Team To South Korea



Early on the morning of Wednesday, August 21, eleven employees of the Center left for Seoul, South Korea for a 2 week promotional tour. The 10 members selected from the Villages were: Val Jeremiah, Kauai Betham, Bobby Akoi - Musicians; David Eskaran, Mark Clawson, Kalani Shelford, Nette Fabricius, Tania Mahoni, Jesse Berniere and Mele Huakau as dancers. Account Executive, Casey Choi from the Waikiki Sales Office headed the group. Absent from the above picture is June Clawson who was on her honeymoon when the photo was taken.

# Aloha 'Oe Bryan!



We are going to miss him for sure. He's always so happy when he comes around. Always smiling and always there. I think my music makes him smile. I hope when he hears Tahitian drums he will take a minute to think of us.  
- Mahana (Tahitian Village)



Been a good guy. Everything we ask for he always gets them for us. Gets us the things we wanted.  
- Kione AhQuinn (Tahitian Village)



Man of stature, a man of inspiration and a great example to all of us. I am grateful for him because he is always on our side and the instructors in anything we asked for. He is a good man, I love him with all my heart - with sugar and spice and cheese - and will miss him.  
- Catherine Teripaia (Theatre)



He has brought a lot to the Theatre Department. Taught us things we never knew - show business style. Thank you for taking me on all those promos with you. It's going to be real different without him. Good luck.  
- David Tiave (Theatre)



It's been nice working with you through the good times and the bad times. Appreciate what you have done for all of us. We will miss you. Good luck in your new job. Best wishes!  
- Regina Pasi (Theatre)



The song says "Because I have been given much, I too must give" and that is Bryan.  
- Keith Awai (Theatre)



I think he is a cool guy and he looks after the performers a lot. He is there when you need him. Always supportive and I think that's the thing I like about him. Sometimes he got stressed out - all for the benefit of business. I enjoy his leadership.  
- Dean Kapu (Theatre)



Eo - Are we going to have a party cause I want to eat some food? He is a good man. I have learned a lot from him and I liked him.  
- Bill Tenney (Theatre)



What can we say about Bryan. He is a cool dude and it is a pleasure working for and with him at the Theatre and also at Guides. Good luck in whatever you do.  
- Kenn Peters (Guides)



We are sorry he is leaving and we are going to miss him. He's nice, he is a gentlemen and a talented man.  
- Choae Choi (Guides)



Going to really miss him. He is a nice guy. Helped us a lot and encouraged us a lot. He cares about the tourism and he cares about the people. He always helps us with our problems. Very friendly and down to earth.  
- Lucy Perez and Heidi Wiley (IMAX)



Appreciate all his help. He did a lot for us. Certainly going to miss him - there's no question about that. We just love him and we are going to miss him so much. He has listened to us when we had problems.  
- Elder Boyd & Sister Dorothy Newman



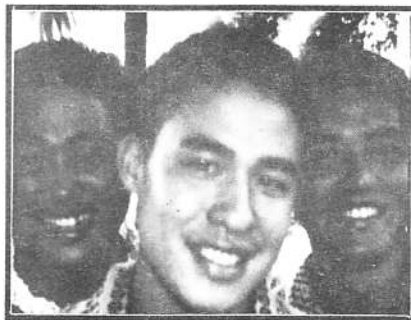
Kia hora te marino. Kia whakapa paunamu te moana. Kia tere te ka rohi rohi. I mua i to huarahi. May the calm be widespread. May the sea glisten like greenstone or jade. Any may the shimmer of summer dance across your footpath. - Val Jeremiah and Charlene Shelford (Maori Village)



I really enjoying working with him; at canoes and nightshow as well. I like him. He is really fun. Don't have much time to talk to him at times, but appreciate working with him and will really miss him.  
- Pierre Mouchas (Marquesas Village)



What can I say. He is one of a kind and they definitely destroyed the mold after him. I will sure miss you.  
- Tania Mahoni (Marquesas Village)



Mahalo nui no kau kokua a pau. Thanks for all of your help.  
- Sky Ishibashi, Kaipo Manoa, Kelvin Oshima (Hawaiian Village)



He's one of the most humble persons I have ever worked with. Also, he is interested in our culture. I have seen the action that he took in order to help us with what we needed. The most important thing is that he is a humble man. - Jessie Maiwiriri (Fijian Village)



Bryan who? He's a hard working man and always around when you need him. He made sure everything is ok. He is always friendly. He is a good person to get to know. He also shows us that he appreciates what we do. - Kap Tafiti (Samoan Village)



Everything about Bryan is good. He's not the kind of person that picked the kind of people he liked - he liked all the people. He is the only palagi that worked here that I liked. He's got the heart ...the Samoan heart and the heart of all the other people here. - Male Mau'u (Samoan Village)



Bryan - Thank you for our Hilo Hatties. You know how much we love them. Thank you for the Mana! As you leave us we give you all our Mana and Hilo Hatties, all our old sulus, all our words for the show and we love you and are really going to miss you! - Dofi Fa'asou (Theatre)



We wish you good luck and thank you for everything. He is a good guy and we'll miss him.  
- Meliame Huakau (Tongan Village)



Eo. Hard for me to say something for Bryan because I love him and I am going to miss him. I hope I get to see him again someday over here or in heaven.  
- Sione Latu (Tongan Village)



A friend to all - especially the missionaries. From repairs on the Chapel Organ to a new couch after the flood. We've appreciated your help!  
- Elder Owen & Sister Doreen Ford

# Super Sports Spectacular

On Tuesday, August 27, the Cultural Productions Division held their first ever Super Sports Spectacular to recognize and show appreciation for the effort the members of the division put forth during this very busy summer. Vice President, W. Bryan Bowles expressed his appreciation to his departments for their tireless efforts during what has proven to be a very active summer. Bowles also wished the students success for this upcoming semester.



The kids especially loved the *Fishing Pond!*

Activities for the night included: touch rugby, basketball, volleyball, swimming, racquetball and a first ever carnival!

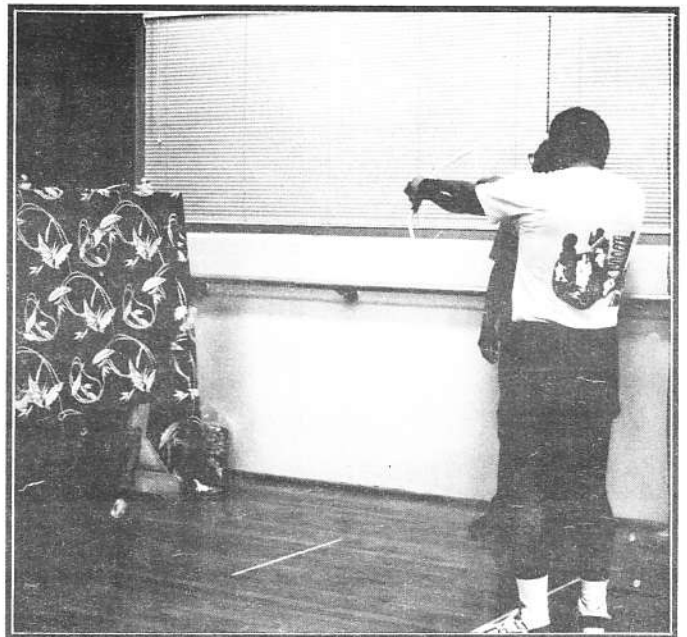
Thanks to all the employees of the Guides, Villages, HawaiiMax and Theater for attending this party and having a great time!

A big MAHALO goes out to Syd Frasure-Wheat and Nephi Prime for all of their hard work in preparing for this event...

...also to Valusia Talataina and the Tech. Services gang for all their help and all others who came and enjoyed the activity.



Javen Bowles (*the divisions youngest employee?*) takes careful aim at the target.



Taking careful aim seems to be difficult for adults as well...as demonstrated by Raymond Mokiao.

## NEW PCC VIDEO PRODUCTION UNDERWAY

### EMPLOYEE CONTEST TO NAME THE NEW VIDEO

Production began recently on a new PCC video tape. After four successful years with the "Portrait of Polynesia" video, it is now necessary to replace it with a new version that includes the many new PCC features such as IMAX, the new Night Show and the Marquesas village program.

With this ambitious undertaking the Center will expand its role in Hawaii's video tape business by producing a total of three tapes: one tape to replace "Portrait of Polynesia", a complete tape of "*Mana - the Spirit of our People*" and a dance instruction tape.

With the production of a new video comes the task of giving it an appropriate title. To get all of the best ideas we are having a **contest to NAME THE VIDEO**. The tape will be 60 minutes and its content will include an historical look at the Polynesian Triangle and how the Polynesians eventually came to Hawaii. A significant portion of the tape will showcase each of the major Hawaiian Islands, finally focusing on Oahu and her attractions as the modern gathering place of Hawaii. The final portion will explore the Polynesian Cultural Center as the modern gathering place of Polynesia.

The marketing strategy behind this tape is to give the visitor a tape that shows all of the beauty of Hawaii (to compete with other Hawaii tapes), but also give them an indepth view of Polynesia and the State's foremost visitor attraction. If someone comes to Hawaii and only buys one video, they can get it all on our tape.

To enter the contest send your idea for a title to the Video Sales Department. The winner will get 4 free movie passes and a free copy of each of our three new tapes as soon as they are available.

## -Employee Benefit Update- Rental Car Discount from **AVIS**



PCC employees are eligible to rent an Avis vehicle anywhere in Hawaii at net rates.

Cars must be booked in advance and must be done either through the Laie Reservations Office at 293-3333, or the Waikiki Sales Office at 923-2911.

### Important!

In order to rent a car you must have a valid drivers license, you must be over 21 years old and possess a major credit card.

For further information, please contact either the Laie or Waikiki reservations offices.

## Special Projects

Now has  
**Hawaiian Airlines**

Coupons for

**\$41** each




and

**Consolidated  
Movie Tickets**

for

**\$4.00**

# September 1991 Employee Menu

Sunday	Monday	Tuesday	Wednesday	Thursday	Friday	Saturday
					Teriyaki Pork Peas & Carrots Rice, Drink  13	14
15	Salisbury Steak w/onions & gravy Corn, Rice, Drink 16	Breaded Pork w/gravy Corn, Rice, Drink 17	Chicken Stew Tossed Salad Rice, Drink 18	Deep Fried Chicken Wings & Drumsticks Salad, Rice, Drink 19	Baked Mahimahi Vegetable, Tossed Salad, Rice, Drink 20	21
22	Baked Chicken Potato Rice, Drink	Lamb Curry Stew Tossed Salad, Rice, Drink 24	BBQ Chicken Peas & Carrots Rice, Drink 25	Teriyaki Wings & Drumsticks Mixed Veggies Rice, Drink 26	Pork Chop Suey Strawberry Parfait Rice, Drink 27	28
29	Deep Fried Chicken w/Gravy Corn, Rice, Drink 30					

## 20%

### Discount on America West Airlines for PCC Employees!

As a *Mahalo* to the Center for working closely in Promotional experiences, America West Airlines is pleased to offer a **20%** introductory discount to all employees of the Polynesian Cultural Center. In order to qualify for this discount you must travel by **December 15, 1991.**

The employee must provide America West with a company I.D. or a letter verifying their employment. The employee must travel. Immediate family (spouse, children, parents, and grandparents) may travel with the employee with a letter verifying family relationship.

To get this great discount follow these simple steps:

**Do NOT call a travel agent for this fare**

1. **Call in your reservations normally to the America West Reservations office at 1-800-247-5692.** You do not need to tell them you have a discount.
2. Obtain the **record locator number** for your reservation.
3. **Call the Honolulu Ticket Office 971-2810,** and advise America West of your employment at the Center and of the record locator number of your reservation.
4. **Follow instructions from America West** on ticket payment and pickup.

#### **Conditions**

- \* Travel must originate in Hawaii
- \* The 20% discount applies to any published fare available on America West Airlines; discount fares, full coach, business class or first class (where applicable). Discount is not available to interisland flights.
- \* All rules governing the applicable fare apply, regarding advance purchases, payment requirements or other restrictions.