



## ALOHA 'OE

### Missionary Couple Return Home

Elder and Sister Gilbert and Maybelle Wellisch, missionaries who had been called to serve in the Center the past 18 months, are returning home. Their service has been in the Chapel and Mission Home. When asked what they found good and wonderful while serving among the people of Laie they were quick to respond with the following:



*Elder and Sister Wellisch are seen here  
with longtime friend Eloni Giolevu*

The Wellisch's would like to thank particularly the village workers for the Aloha spirit they extend to them through warm greetings, generous acts, such as leis, and words of concern shown in time of sickness and ill-health. They want to pay special tribute to their neighbor Eloni Giolevu with whom they have a very close

friendship. Eloni, who works in the Fijian village, has developed both a brotherly and a spiritual bond with the Wellisches and they'll always remember him for his good heart and character.

They'll ever be grateful for the opportunities they've had meeting countless guests at the Chapel. With them have shared a human bond of recognition that we're all Heavenly Father's children.

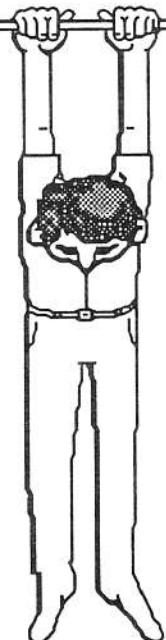
The Wellisches want the Center employees to know that it's been a pleasure serving among them. They leave Hawaii better and brighter having experienced their love and aloha.

We express our love and gratitude to this fine missionary couple as they return home.

### Please Don't Leave Us Hanging!

The UPDATE needs your help. If you have any articles to submit for the next UPDATE please submit them to the Graphics department by Tuesday, September 26. Suggestions for articles is also welcome. You may also call articles in at 3115.

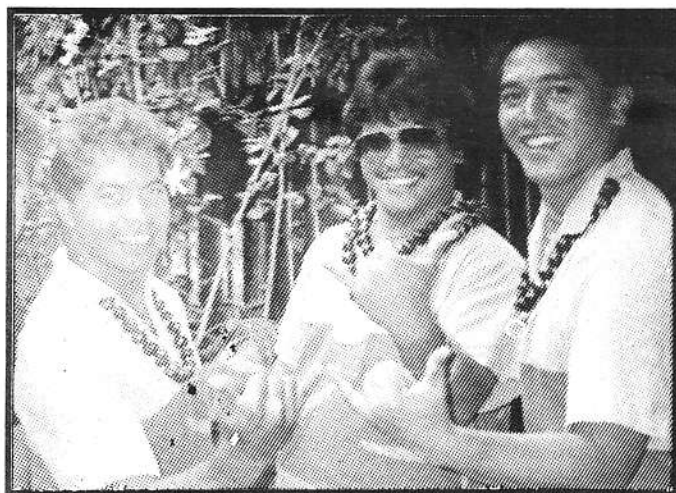
Thanks for your support!



## Face to Face Cultural Training A Success

Village Operations held a cultural training session on Saturday, September 2, which proved to be a resounding success. After introductory remarks by the new Vice President, Cy Bridges, the villagers shared important cultural experiences such as the importance of taro in Hawaii, chiefly ranking in Samoa, Fijian wedding ceremonies, Maori carving, Marquesan tattooing, Tongan tapa making, and Tahitian shell craft.

Pulefano Galea'i, Village Manager, would like to thank all Village workers for their support and attendance at the training session. We would like to invite all those who missed it to plan to attend future sessions which will continue to provide a wealth of background information which will help all Village personnel to better serve the center Face to Face



*These boys are anxious to show the enthusiasm they recieved at the training.*



*These workers show their Face to Face Aloha spirit.*

## Concessions Corner Employee Notes

**Cyndi Harvey** has been promoted to Night Shift Supervisor. Her responsibilities include supervision over Deelites, Theater Snack Shop, Drink Stand, and Lanai Ice Cream. Cyndi is attending BYU-Hawaii and is majoring in Business Management. Cyndi loves Hawaii, but was born and raised in Idaho. Concessions would like to congratulate Cyndi in her new position.

Congratulations also go to Esther Crawford, the concessions fry cook, her husband, and their four children.

The Crawfords were baptized on Saturday, September 2, 1989. Esther has been working in the Concessions department since 1987 and has carried many additional responsibilities. Esther was born and raised in Western Samoa, but has traveled to many states due to her husband's employment. We congratulate Esther & her family for taking this major step in their life.

## Editor's Corner

### The Frog and the Geese

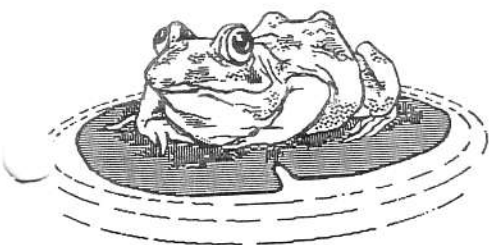
Two geese were about to start on their annual migration, when they met a frog who begged to be taken along. The geese said, "OK, if you can think of a way that we can manage it."

The frog produced a long stalk of grass and suggested that each goose hold it at opposite ends and that he would cling to it by his mouth, in the middle.

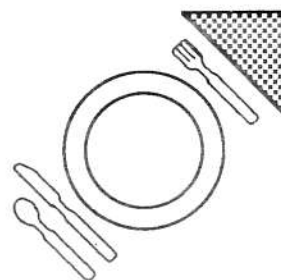
In this manner, the three were heading south when they were noticed by a man below. The observer expressed admiration for this clever maneuver and shouted, "Who thought of such an unusual mode of transportation?"

The frog was so puffed up over the compliment that he opened his mouth to say, "The idea was mine!" Of course, he lost his hold, fell to the earth and was killed on impact.

The moral of the story is this: When you have a good thing going, don't be so eager to take credit. It is best to keep your mouth shut.



## GATEWAY CORNER EMPLOYEE MENU



### Friday, Sept. 15

Deep Fried Chicken  
w/Gravy  
Green Salad  
Steamed Rice  
Cold Drink

### Saturday, Sept. 16

Hamburger w/onions  
& Gravy  
Steamed Rice  
Mixed Vegetables  
Cold Drink

### Monday, Sept. 18

Teriyaki Wings  
and Drumsticks  
Natural Sauce  
Steamed Rice  
Mixed Vegetables  
Cold Drink

### Tuesday, Sept. 19

Breaded Pork Steak  
w/Gravy  
Steamed Rice  
Pistachio Salad  
Cold Drink

### Wednesday, Sept. 20

Meatloaf w/Tomato Sauce  
Buttered Corn  
Steamed Rice  
Cold Drink

### Thursday, Sept. 21

Fried Hoki Fish  
w/ Tartar Sauce  
Chef's Salad  
Steamed Rice  
Cold Drink

### Friday, Sept. 22

Laulau & Chicken Long  
Rice, Poi  
Lomilomi Salmon  
Steamed Rice  
Pineapple Spears  
Cold Drink

### Saturday, Sept. 23

Baked Chicken w/Gravy  
Steamed Rice  
Potato Salad  
Cold Drink

### Monday, Sept. 25

Beef Tomato  
Steamed Rice  
Strawberry Parfait  
Cold Drink

### Tuesday, Sept. 26

Roast Tom Turkey  
Sage Dressing, Giblet Gravy  
Steamed Rice  
Mixed Vegetable  
Cold Drink  
Cranberry Sauce

### Wednesday, Sept. 27

Deep Fried Chicken  
w/Gravy  
Buttered Corn  
Steamed Rice  
Cold Drink

### Thursday, Sept. 28

Sandwiches  
Ham & Cheese  
Tuna or Eggs  
Macaroni Salad  
Chicken Veg. Soup  
Cold Drink  
Tomato/Lettuce



\*\* This menu is subject to  
change without prior notice.



### New Idea

## Double Broom Double Cleans

If you are like most people, you hate sweeping. If you dislike sweeping the floor then a new idea from the Tahitian Village may appeal to you. A double broom which double cleans has been invented in the Tahitian Village. Using one broom handle, this domestic tool features a standard corn broom at one end, the other a broom head made from coconut midribs. Pictured below is Ravai Fatiaki, who demonstrates this wonderful new invention that utilizes the best of modern and ancient times. Ravai credits her efficiency and energy to this fantastic invention.



*Ravai Fatiaki demonstrates  
the Double Broom*

### Village News

## Employee of the Month



**Sela Feinga**  
*Village Employee of the Month  
August 1989*

Sela Feinga, who works in the Marquesas Village, was honored at the most recent Face to Face Training session as the Villages Employee of the Month for August.

Sela was recognized for her dependability, her grooming (her fresh flower leis and headbands are the envy of the village workers), and for the leadership she extends in the Marquesas Village.

Congratulations, Sela, and keep up the great work!

## Village Corner

# September Birthdays      New Hires

Payne Kanani Luke	9-5
Valauna Tufina	9-6
Nauma Apelu	9-11
Rubina Kalo	9-11
Semisi Fakatawa	9-17
Setareki Kaumaitotoya	9-19
Marlene Springer	9-19
Irene Petero	9-19
Mele Tovo	9-20
Patiola Uluave	9-20
Doug Christy	9-28



Tetua Violeti - Tahitian Village  
Bernier Jessie - Tahitian Village

## BYU Fall Semester Classes

The Village Operations Educational Section welcomes its Fall Semester BYU Fine Art, Polynesian Classes, students and Village instructors. We have 42 students enrolled for these classes. The classes began on September 6, and will end on December 15, 1989.

Mahalo to the teachers of these classes for helping to fulfill one the great missions of the Center.

### "F" for Effort



"Yes, I'll give you a job in my store," said the boss to a young applicant, "but, you'll have to start at the bottom."

"I don't mind," said the applicant.

"Fine! First thing, sweep the floor."

"But. . .I'm a college graduate."

"No matter," said the boss, "Just give me that broom and I'll show you how."

## Now Open



Da Logo Shop is now open with many PCC logo items available for employees to purchase at reasonable cost.

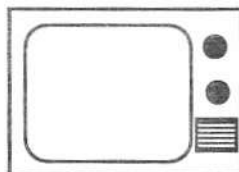
Merchandise includes logo shirts, shorts, watches, keychains, cups, and many other great items. Da Logo Shop is located upstairs in the Marketplace and they are open from 8:00 am to 5:00 pm Monday through Friday.

## Graphics Update

### New Sign at Hale Aloha

Just in case you haven't noticed, there is a brand new 12' X 4' Redwood sign at the Hale Aloha. The sign was put in place on Tuesday, September 12. This project is part of an ongoing campaign by Lisa Calvert, Sarah Brown, and Henry Leapai to maintain, refurbish, and design the signage for the Center. If you have any suggestions for the signs in the Center call the "signs team" at Graphics ext. #3115. Mahalo to the sign team for their hard work.

## Full House Update



Bob Saget . . . . .	Danny
John Stamos . . . . .	Jessey
David Coulier . . . . .	Joey
Candace Cameron . .	D.J.
Jodie Sweetin . . . . .	Stephanie
*Ashley Fuller Olsen .	Michelle
*Mary Kate Olsen . . . .	
(Twins)	
Lori Loughlin . . . . .	Rebecca

## NOTICE

Don't miss the premier of the episode shot at PCC.

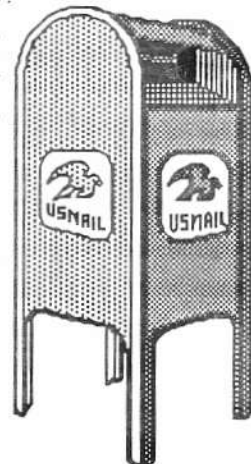
Friday,  
September 22  
at 7:00 p.m.  
on KITV-4

## Mailroom News

### Aloha 'Oe Lanice

UPDATE would like to wish a fond farewell to Lanice Wong. Her last day with the Center will be Friday, September 22. Mahalo to the mail girl who makes sure that neither rain (well, sometimes rain), nor snow(?), nor sleet, nor hail, nor dark of night have kept her from her appointed rounds.

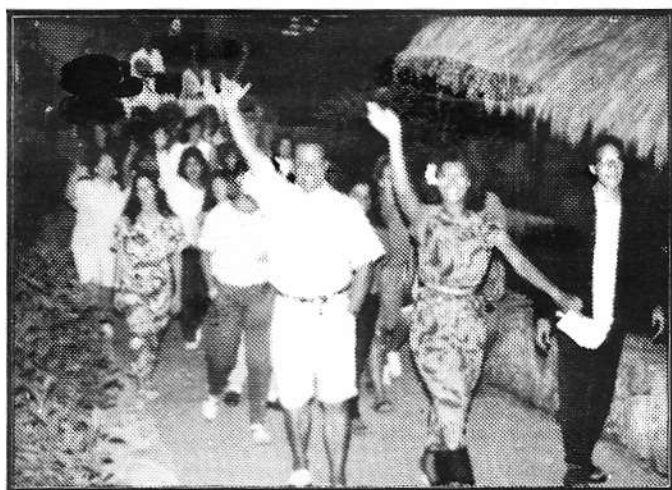
Best wishes as she leaves to serve a mission in Los Angeles. Mahalo for a job well done!



## **Freshman Alert**

# **BYU-Hawaii New Student Orientation**

On Friday, September 8, the Center was host for the incoming student orientation dinner. There were 750 new students in attendance that evening. The students arrived and were divided into one of several groups assigned to various villages. Throughout the night, each group would stop in a village, learn a little about the culture, learn a song or



***Papa Malu, Tongan Village worker, leads a group of new students.***

The highlight of the evening took place in the Hale Aloha where the Village workers put on their own version of the canoe show. This was only part of the program. President Britsch introduced the group to President Christensen who briefed the students on the various jobs available here in the Center.

This was truly an evening of enjoyment to make the incoming students feel welcome.



***Sylvanna attempts to teach a new student to shake properly.***

dance, and then would have a little refreshment before they move on to the next village. Each village gave the students a **small** glimpse of what goes on here at the Center. The destination of all the groups was New Zealand.

In New Zealand the sumptuous dinner was served. Due to large numbers, the students had to eat in shifts. A little rain fell, but it's very difficult to discourage hungry students.



***President and Sister Christensen welcome the new students.***



# September MIS Training

Sunday	Monday	Tuesday	Wednesday	Thursday	Friday	Saturday
		Word Perfect 5.0 Int-Adv Course 9-11 am	Introduction to the Mac 9-11 am	LAN Training	Computer Users Committee Meeting 9 am (Tentative)	
17	18	19	20	21	22	23
		PSI Request Report Generation / Lotus Agenda 9-11 am			Pay Day	
24	25	26	27	28	29	30

## ATTENTION ! All Laptop Users

Beware of overcharging your laptop batteries for periods longer than 24 hours. Serious damage to your laptop and battery could result.

It is recommended that you use up your battery until the "low battery" light appears, then recharge.

Any questions? Call Sol at MIS (ext. #3162)

## Extra WordPerfect Function Keys

For those of you fortunate to have the new enhanced keyboard, (With 12 function keys across the top), here are their functions:

**F11 - Reveal Codes**

**F12 - Back**

## Keeping Text Together with the "Hard Space Method"

Ever try keeping words together before justification mode throws everything off? WordPerfect's "Hard Space" method helps you to do so.

Let's try keeping some dates together with this method.

15 September 1989

Press (Home), release it, and press the space bar. In **Reveal Codes** (Alt-F3), this date should look like this:

15[ ]September[ ]1989

(the "[ ]" being the code for the hard space.)

Note: this code is only placed between words you want kept together -- not before or after.

(WordPerfect Magazine Sept. '89)