



September 25, 1981

update 81

Polynesian Cultural Center

FEATURE: Maori Missionaries Perform

The arrival of some 260 'kiwis' has swelled the number of New Zealanders in Laie this weekend. Wednesday this week saw a traditional welcome offered the group on the Maori Village marae.

The Kia Ngawari group is the largest Maori cultural entertainment group ever to perform outside New Zealand, and is comprised of members of all major Maori tribes as well as Polynesians from other islands. The group also includes a few non-members of the Church, while at least 50 served labor missions building both the PCC and BYU-HC campus facilities.

As is typical of Polynesian cultural groups, Kia Ngawari includes performers of all ages. In fact, key traditional roles can only be taken by

elderly men and women, and the group has its kaumatuas travelling with it.

Cannon Center will reverberate this morning with the sounds of Maoritanga as the group shares its spirit and aroha with the campus and community. Their program, 'The Return of the Maoris', directed by Tom Taurima, will begin at 10:30 a.m.

We welcome our cousins from Ao Tea Roa: *'Haere mai ra, e te manuhiri tuarangi e, haere mai ra e te whanau e, haere mai haere mai ra.'*

Right: Everyone wants to get in the act as three generations of Maoris reunite in ceremony.

Bottom left: Tom Taurima. **Bottom right:** Over 250 Maori labor missionaries dance for village workers and Center visitors beneath Hawaii's hot sun.



Vendy Off To Minnesota



PCC's 'flying ambassadors', Vendy Oura and Sophia Turaga are off again! Since their last successful promotional trip to Canada, Vendy and Sophia's presence was requested at the Dayton Department Store's Fall Travel Fair to be held October 1, 2, & 3 in Minneapolis, Minnesota.

Dayton's is a large chain of department stores similar to Hawaii's Liberty House, and their request specifically mentioned Vendy and Sophia as the weavers/demonstrators had impressed Canadian shoppers with their presentations last year.

The store's last promotional drew 130,000 people with full newspaper, radio, and T.V. coverage, reaching thousands more. Six different travel environments will be set up in the shopping center mall through which the public can walk and view demonstrations. The store has a standard to maintain of presenting events that are 'visually exciting, impressively staged, and which will make a lasting impression on the visitor.'

We send much aloha with Vendy and Sophia, -- they are the ideal team to take Polynesia to Minneapolis!

Student Workers May Be Breaking Honor Code

ADDENDUM TO THE BYU-HC
CODE OF HONOR
Student Employment at BYU-HC or
PCC.

BYU-Hawaii Campus students who qualify for employment are permitted to work 10-20 hours per week

(if single) and 10-30 hours per week (if married). Exceptions to this rule, if any, can be made only with the written approval of the BYU-HC Student Employment Coordinator. Students violating this code by working more than the hours authorized may be subject to dismissal from their job(s) and school.

Payroll Procedures

All employees, please be advised of the following established payroll procedures:

A) ALL timecards require 2 (two) signatures. The employee's signature and the Supervisor/Manager signature. Any timecards without both signatures will be returned to their departments before checks will be processed.

B) In the event that an employee has a problem on his/her check they are to go to the secretary of their department, and that secretary will contact the Payroll Department and we will handle it from there.

C) Vacation, Paid Holidays and Sick Leave print-outs are distributed to all departments during the off payroll weeks with the updated totals. Employees that wish to find out their vacation, paid holiday, or sick leave time are to go to their respective secretaries for this information.

PAYROLL DEPARTMENT

"That's Showbiz"

'That's Showbiz', that's the Creative Childrens Workshop, directed by Bobby Chambers and PCC employee Esther Arp.

The Creative Childrens Workshop is an after school program designed to give as many children as possible the opportunity to participate in creative singing, dancing and dramatics.

Classes are being offered to children in the Kindergarten thru 7th grades and will be held at Laie Elementary cafeteria, Monday, Wednesday and Friday from 3:00 p.m. - 4:00 p.m., beginning September 28th and ending December 18th.

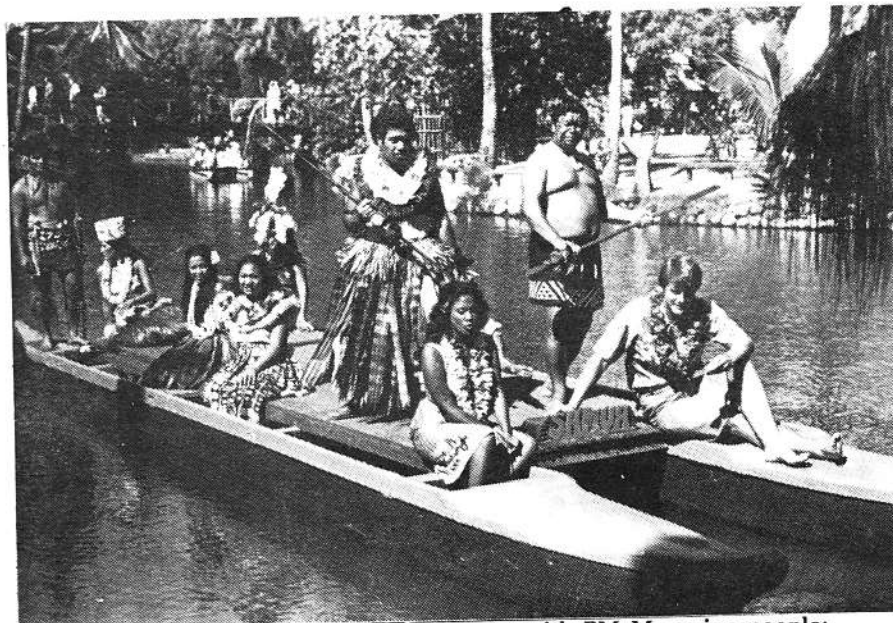
The cost will be a low \$10.00 per child in order to make it possible for several children in the same family to participate if they desire.

Both directors Bobby and Esther have performed professionally and have had teaching experience with childrens music and dramatics.

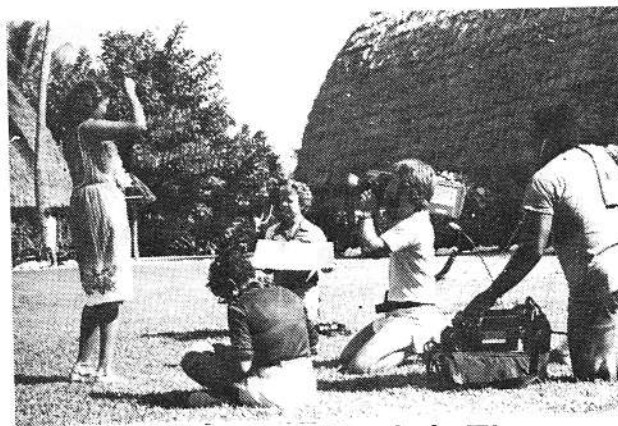
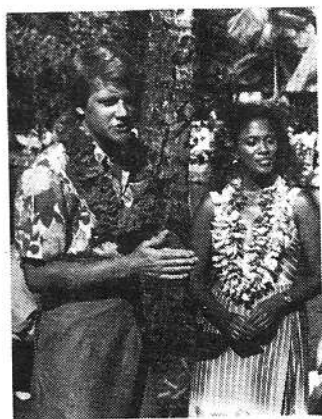
For more information and registration in this exciting opportunity contact Bobby Chambers at 293-1879, or Esther Arp at 293-3083 (Mon. - Fri., 8:00 - 3:00).

NEWS

Wash. D.C. Show Discovers Polynesia



Village models float down the lagoon with PM Magazine people: Camilla Carr and Pat Van Horn. Models include: Samoa - Leilani Purcell, Tonga - Mele Tupola, Fiji - Uila Laukau, Hawaii - Stacy Ferris, Tahiti - Lucy Fonoimoana, Tonga - Samson Lutui, Fiji - Viliami Finau, New Zealand - Doe Horomono, and paddler - Arron Tufaga.



Crewmen work together to get the best possible film take for TV.

'Smile, you're on Candid Camera!' Well, not really, but it is still TV. Many Center visitors and employees were 'smiling for the Camera' Monday, as seven crew members from the Washington D.C. television show PM Magazine rolled around the grounds with the mini-cam and microphone.

The Eastern TV crew spent several days in Hawaii filming such subjects as: the sugar cane industry; history of Lahaina; Waikiki and other attractions to use in a week-long series of shows to be aired the week of October 29th.

Originally they had only planned to film in the Center for the early afternoon and move on to another shooting location. However, after arriving they became so interested in the Center and the things it had to offer that they remained the entire afternoon.

Among the scenes to be shown will be the canoe pageant; coconut tree climbing; hula instruction and various other village scenes.

Included in the group were: Program Director - Lydia Jones; Camilla Carr and Pat Van Horn. Also with the group was Patty Van Horn, wife of Pat. For many of the group it was their first trip to Hawaii and the Polynesian Cultural Center.

Points mentioned in their script were the purpose and sponsorship of the Center, its date of origin and its relationship to the university and the students.

Happy Birthday To You

Carl Fonoimoana	September 25
Julian Apuakehau	25
Enese Tauilili	25
Faitau Tipa	25
Patrick Fonoimoana	26
Katinia Tovo	26
Eric Kamanu	26
Ardella Arrington	27
Conrado Valdez	27
Lapisi Oto	27
Luseane Kava	27

Sateki Musie	28
Douglas Christy	28
Creighton Drummondo	28
Rene Tetuanui	28
Leslie Fiagoy	28
Mary Ann Divett	28
Lovine Unga	28
Losaline Manoa	29
Malia Lieataua	29
Tagiilima Togiai	29

Grace Dinsbach	30
George Pelekane	October 1
Mildred Cashman	1
Vivian Ahuna	1
Mereana Emose	2
Maile Vi	2
Tofilaumua Masoe	2
Tevita Pasi	2
Jorunn Pearl	2
Sumiko Tsuji	2

CENTER & COMMUNITY NEWS



Bula Vinaka To You Too!

Coming Soon: Fijian Cultural Day! Chief Sigavata and the Fijian Village personnel are planning an exciting program for this year's cultural celebration on the Fijian rara.

Beginning with a morning devotional at 9:00 a.m. on Saturday, October 17th, the day will include demonstrations in the village from 10:00 a.m. on, a brass

band concert and flag raising beginning at 1:50 p.m. on the May Day area, and the main program at 2:05 p.m.

Included in the main program are dances by both boys and girls such as Vakamalolo, Soli Kei Viti, Ruasa, Seasea, and the Wesi or spear dance.

Mark your calendars for a day's celebration in the gracious Fijian style!

Happy Birthday To Us!

The Polynesian Cultural Center will celebrate it's 18th Birthday Anniversary, kicking off the week with a golf tournament on Monday October 12th, and will end Friday, October 15th with an awards and Friday Night Special Program.

The purpose of this celebration is to commemorate the opening of the Center and to celebrate our many years of success by getting together for a week of fun and athletic competition that will provide us all an opportunity to intermingle with our friends and fellow workers in other departments.

If you miss this activity you will forever have a blank space in your scrapbook, so get your teams together now and DON'T MISS OUT

The following is a schedule of events

Monday, 12

Lunch at Gateway
12:00 - 1:00 p.m.

Cultural Display
'COCONUT'
2:00 - 5:00 p.m.

Home Evening Program (if possible)
7:30 - 8:30 p.m.

Tuesday, 13

PCC Temple Session
5:30 a.m.

Opening Exercise
&
Breakfast at Old Theater
7:30 a.m.

Ping Pong Tournament
Bowling Tournament
Flag Football
8:00 - 10:00 a.m.

Lunch at Gateway
12:00 - 1:00 p.m.

Cultural Display
'PINEAPPLE'
2:00 - 5:00 p.m.

Wednesday, 14

Flag Football
6:00 - 8:00 a.m.

Lunch at Gateway
12:00 - 1:00 p.m.

Cultural Display
'BANANA'

Thursday, 15

Tennis Doubles
Volleyball
Paddleball Doubles
Basketball
6:00 - 8:00 a.m.

Lunch at Gateway
12:00 - 1:00 p.m.

Cultural Display
'PAPAYA'
2:00 - 5:00 p.m.

Friday, 16

Basketball (con't)
Volleyball (con't)
6:00 - 8:00 a.m.

Lunch at Gateway
12:00 - 1:00 p.m.

Cultural Display
'BREADFRUIT'
2:00 - 5:00 p.m.

Thursday Nite Special
&
Awards Presentation
8:00 p.m.

Kokua For Aloha Float

Aloha Week Float Chairman, Alice Logan, would like to have volunteers who are willing to work hard at an all-night decorating session, Sept. 25, to build the PCC float for the Saturday morning parade. Those interested should contact Laura or Jeanie in the Shop Polynesia office. Vans will be scheduled to transport volunteers to and from Pier 10 in Honolulu.

PCC floats have won before, let's do it again



Friday, September 25, 1981
3:00 p.m. to 7:00 p.m.

and

Saturday, September 26, 1981
9:00 a.m. to 7:00 p.m.

in the

Conference Room
Old Administration Building

MATERIAL * NOTIONS * CLOTHING

BYU Stake Library Has New Hours

The BYU-HC Stake Library would like to announce their new hours beginning immediately:

Sunday - 7:30 a.m. - 7:30 p.m.
Monday - 8:00 p.m. - 9:00 p.m.
Tues. - Thurs. - 6:00 p.m. - 7:00 p.m.
Friday & Saturday Closed

You must bring an I.D. card to check out equipment. Your card will be returned when equipment is checked back in. In the future special yellow equipment cards will be issued to those requiring library equipment. Until that time please bring your student I.D. or drivers license.

Last minute check out will be possible on Sunday morning, if equipment is available. Otherwise all supplies should be reserved in advance with the help of your ward librarian.

General Conference

General Conference will be on our local television stations at the following times Sunday, October 4th.

KITV

6:00 to 7:00 a.m.
10:30 to 11:30 a.m.

KGMB

11:30 to 1:30 p.m.

Conference can also be heard over KSSK (K-59) radio according to the following schedule.

Sunday, Oct. 11th, 5-7 a.m.
Sunday, Oct. 18th, 5-7 a.m.
Sunday, Oct. 25th, 5-7 a.m.
Sunday, Nov. 1st, 5-7 a.m.

With four hours of Conference telecast available BYU - Stake will hold no Sunday meetings with the exception of a ward fireside.

Sunday the 27th of September will be Fast Sunday.

Update

This publication is printed as a service to Polynesian Cultural Center Employees each Friday. Your comments, criticisms and ideas are welcome. Please contact Vernice Pere at 3012 or Loni Manning at 3041.



LAST WEEK FOR PHOTO EXHIBIT

For those who have not yet ordered their souvenir photos from the Malietoa exhibit, this will be the last week of the exhibit and the last week to order photos at the Business Office.

viewpoint

vernicepere

"Kia Ngawari"

At the turn of the century, a young missionary arrived in New Zealand to preach the gospel of Jesus Christ. He was much the same as thousands of young men and women who have followed him into the Pacific, yet, in significant ways, he was much, much more.

He was assigned without companion. He was seventeen years old, and his name was Matthew Cowley. About six months after his arrival he wrote to his mother:

"Although I am laboring without a companion, I do not complain, because it is far greater to rely on the Greatest of All Beings for help than to rely on a senior companion who has been in the service only a few months longer than yourself."

He indicated to his mother that the Maoris 'treat me like a king and I am right at home with them.' He began working revising and proofing the Book of Mormon which had been previously translated into the Maori language. He corrected errors in some 2500 verses, and was then assigned by the Mission President to translate the Doctrine and Covenants and the Pearl of Great Price into Maori. He spent two years on that work. Later he wrote home:

"Now when I read these books, I marvel that I was the one that was supposed to have done the translating. The language surpasses my own individual understanding of it. This was the great experience of my life and it will always remind me that God can and will accomplish his purposes through the human mind. lovingly, Matt."

After his mission he returned home and married. Some years later he was called again to New Zealand, this time to serve as Mission President. One of the first things he did was to have hundreds of little signs printed bearing the words *Kia Ngawari*. These he sent into every home in the church in New Zealand. The phrase became his slogan, his admonition, and his appeal to the people he loved. While there is no English counterpart to the words, the central meaning is 'strive in humility.' The phrase expresses both the spirit of striving, as well as that of humility, and includes tolerance, virtue, sincerity, loving kindness, and long suffering. It is a gesture of great love and respect for the Maori group presently visiting among us to have called themselves by that title, for the spirit of the man who was Matthew Cowley is carried in the name.

He was called to be an apostle and ordained on the same day as Spencer W. Kimball. He was a man of God of large and generous spirit, and he greatly loved the people of Polynesia. In April of he wrote:

I would like to devote my whole life to the interest of the Pacific Islanders, not only the Maoris, but the Hawaiians, Tahitians, Samoans, etc.

By the time of his death, he had so served the people of the Pacific, that he was known as a man of miracles among them. Many of us living today were blessed by him. Perhaps, in one line of wisdom, he reveals all that *Kia Ngawari* means, as well as all that his life meant to those who remember him. It is a simple sentence, but a statement of Christ-like insight:

"To lead, we must love."

BYU-HC Calendar

Friday, September 25th
Maori Missionary Performance
10:00, Auditorium

Holoku Ball
Ballroom, 9:30 p.m.

Saturday, September 26th
Relief Society Broadcast
2:00 p.m., Auditorium

Movie
6:30 p.m. & 9:30 p.m., Auditorium

Sunday, September 27th
Film Classic
'Mr. Roberts'
6:30 p.m. & 9:30 p.m., Auditorium

Out Of Tune?

Professional LDS piano tuner (tunes BYU pianos) will tune your piano for only \$30.00 during the last week of this month. Works daytime or early evening and can also repair broken or worn pianos. For appointment CALL Carolyn Shumway soon 293-9565.

Piano Lesson Given

Piano Lessons given by experienced teacher.
\$15.00 per month. CALL 293-1568

More Than Disco

Would you like to see your son or daughter do more than sing along with the disco station on the radio? Help preserve your musical heritage and supplement your child's musical opportunities at the same time by enrolling them in the Teen and Youth Choir programs offered through BYU Continuing Education. For more information call 293-3780. Scholarships available!