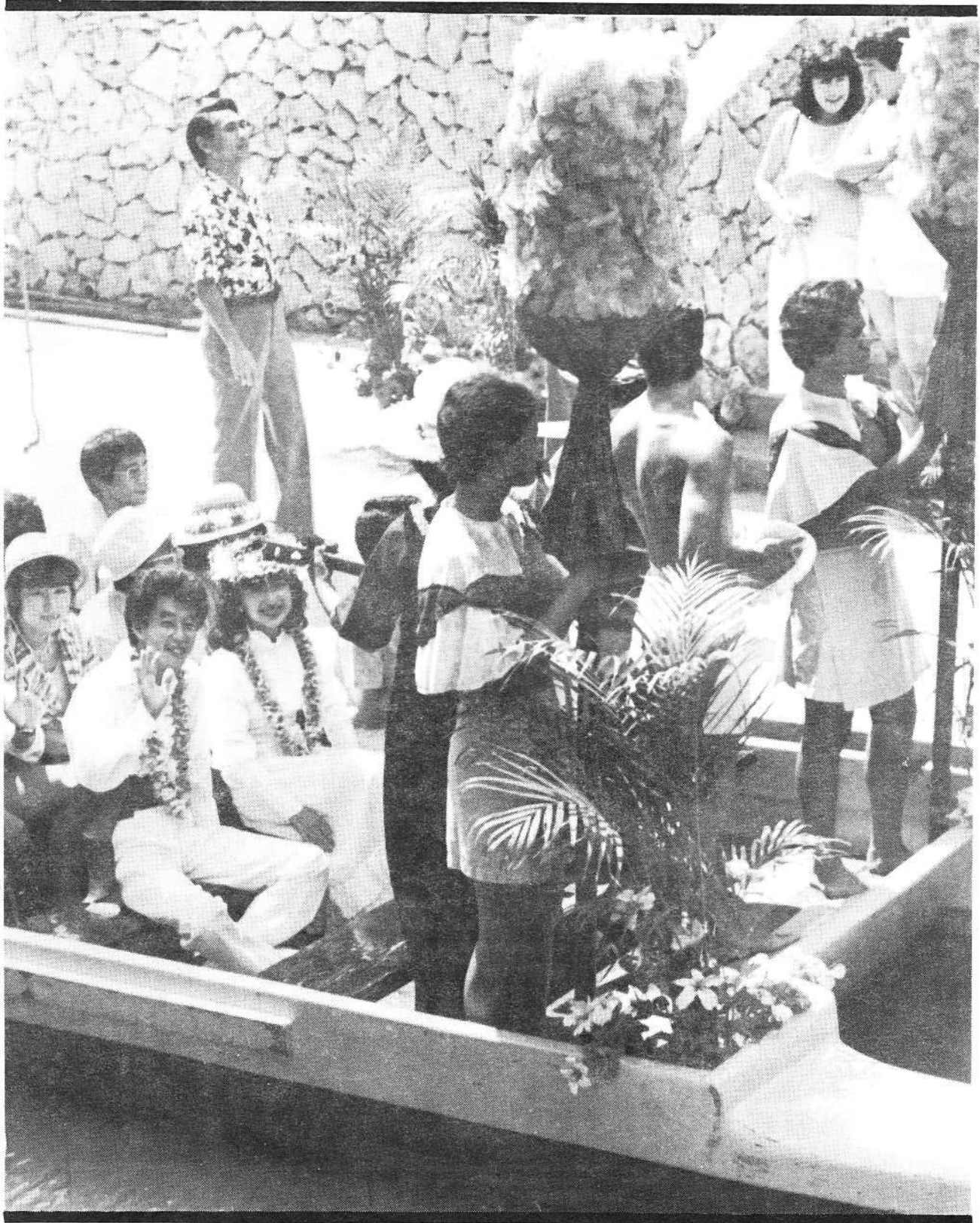




**Japanese honeymoon for 120**  
See story page 2

Polynesian Cultural Center Employee Newsletter • Laie, Hawaii • Published Weekly • September 28, 1984



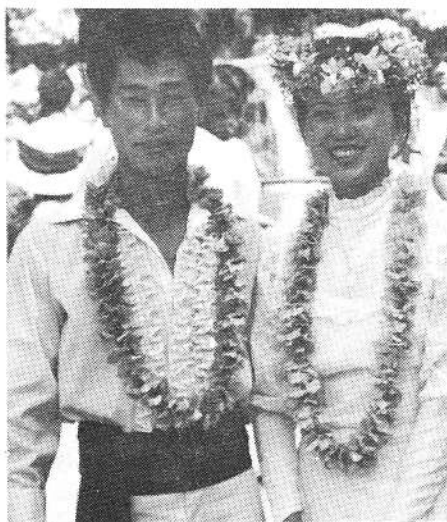
## Students receive work-study grants

Fourteen Polynesian students from New Zealand, Tahiti and Fiji have been awarded scholarships to BYU-Hawaii with the new work-study grant program. Students applying for the work-study grants must meet BYU-Hawaii academic and ethics standards and requirements. The scholarships will cover the cost of the students airfare, education, room and board and a small monthly stipend. All scholarship students will be serving in various departments in the Cultural Center as part of the requirement for receiving the financial benefits of the work-study program.

Scholarship students working in the villages include: Sundee Transfield, Dewayne Transfield, Mary Matenga, Gina Burke, and Debbie Haeate from New Zealand. Also working in the villages are Lawrence Fong, Kasanita Nalunisa, Kama Sazenaca, Atunaisa Tabua, Uraia Rainina from Fiji and Renee Marama from Tahiti. Scholarship students in the Theatre include Vilami Nalumisa, Matusela Savea and Voi Solomone from Fiji.

As one of the fourteen scholarship recipients, Mary Matenga expressed her gratitude for this new work-study program that has enabled her to obtain

## Japanese couples honeymoon at PCC



Mr. and Mrs. Yoshiyuki and Kazuko Shirachi are one of 60 Japanese newlywed couples who celebrated their wedding 'Hawaiian style' Wednesday at the Polynesian Cultural Center.

One hundred and twenty Japanese honeymooners celebrated 'Hawaiian style' Wednesday, September 26 as they floated down the PCC lagoon to the sounds of Hawaiian music.

Four of the 60 couples were chosen to wear traditional white Hawaiian wedding outfits, one couple on each of four canoes. As the Japanese newlyweds boarded the canoes, colorful flowers were tossed from above.

Next week, 60 more honeymoon couples will enjoy a similar day of Hawaiian tradition as part of Ana Halo Tours celebration of the first international flights for All Nippon Airways, the second largest airline in Japan.

largest airline in Japan, according to Osamu Osaki, of PCC Sales & Marketing.

her education. She says she is happy to work at the Cultural Center and enjoys meeting people. She says, "I have a lot of goals that I want to accomplish. By eliminating many of the economic worries, this work-study program has

enabled me to concentrate on the things I want to do."

The Polynesian Cultural Center and BYU-Hawaii hope to have 150 scholarship students within the next four years.

## Employee Lunch Menu-October

MONDAY	TUESDAY	WEDNESDAY	THURSDAY	FRIDAY	SATURDAY
1 Sweet & Sour meatballs Steamed Rice Seasoned Mixed Vegetables Cold Drink	2 Open Roast Beef Brown Gravy Mashed Potatoes - Rice Hot Vegetables Cold Drink	3 Baked Lasagna Steamed Rice Toss Salad w/ dressing Garlic Bread Cold Drink	4 BRO Pork slices Natural BRO sauce Lyonnaise Potatoes Steamed Rice Cold Drink	5 Hawaiian Plate Deep Fried chicken Steamed Rice Seasoned Hot Vegetables Cold Drink	6 Hamburger Patties w/Gravy Steamed Rice Seasoned Hot Vegetables Cold Drink
8 Braised Beef Steamed Rice Seasoned Mixed vegetables Cold Drink	9 Chicken Chop Suey Steamed Rice Seasoned Sweet Corn Cold Drink	10 Salisbury Steak Steamed Rice Toss green salad w/dressing Cold Drink	11 Chicken Curry Steamed Rice Peas & Carrots Cold Drink	12 Roast Pork w/gravy Steamed Rice Seasoned Hot Vegetables Apple sauce Cold Drink	13 Chicken Ala-King Mashed Potatoes Steamed Rice Cold Drink
15 Shoyu Chicken Natural Sauce Steamed Rice Seasoned Hot Vegetables Cold Drink	16 Spaghetti w/Meat & Sauce Garlic Bread Grated Cheese Seasoned Mix Vegetables Cold Drink	17 Pork & Cabbage Steamed Rice Seasoned Peas Cold Drink	18 Beef Stew Steamed Rice Toss Green Salad w/dressing Cold Drink	19 Hawaiian Plate Deep Fried chicken Steamed Rice Seasoned Peas & Carrot Cold Drink	20 Baked Tuna w/noodles Steamed Rice Seasoned Corn Cold Drink
22 Baked Luncheon Meat Glazed Sauce Steamed Rice Seasoned Hot Vegetables Cold Drink	23 Baked chicken w/Giblet Gravy Steamed Rice Seasoned Hot Vegetables Chilled Cranberry sauce	24 Baked Meat Loaf w/ tomato sauce Steamed Rice Seasoned Hot vegetables Cold Drink	25 Teri - Pork slices Steamed Rice Pineapple chunks Cold Drink	26 Beef Curry Stew Steamed Rice Toss Green Salad w/dressing Cold drink	27 Stuffed Franks w/cheese Steamed Rice Fried Cabbage Cold Drink
29 B-B-Q Chicken Natural Sauce Steamed Rice Seasoned Corn Cold Drink	30 Pork Chop Suey Steamed Rice Pineapple chunks Cold Drink	31 Baked Macaroni w/ground beef Steamed Rice Buttered Mixed Vegetables Cold Drink			



## Prizes awarded in "Celebration of Aloha"



KIKI deejays Kamasani Kong (far left), Tom Moffat (center back), and General Manager Jeff Coelho (far right), talk with Tommy Taurima (center) and other KIKI staff members about the "Celebration of Aloha."

KIKI and the Polynesian Cultural Center announce a major promotional campaign in honor of the Center's 21st anniversary. The promotional will begin October 1 and continue through November 17 with a special KIKI Day "Celebration of Aloha."

In honor of the Center's 21st anniversary and as a thank you to the state of Hawaii, PCC and KIKI will be giving away 21 different kinds of prizes to 2100 winners of the sound quiz questions. From 6 A.M. to 7 P.M. each hour, KIKI radio deejays will be playing sounds and songs from the Center that must be identified by radio listeners.

### Center family entertains at Food Fest performance

Six Polynesian Cultural Center employees, all in one family, will be performing, October 5 at the annual BYU-Hawaii Club Food Fest. Members of the George Kaka family will be presenting a special performance that evening at 8:30. Center employees performing with the family include George Sr., George Jr., James, Milton, Tane and Moana.

The event will be held between the Cannon Activities Center and the Administration Building from 7:30 to 9:30 P.M.

### Volleyball Championships

Saturday, September 22, the Guest Services men's volleyball team was awarded red T-shirts for their championship efforts as winners of the PCC men's volleyball league. Second place went to members of the Theatre team who were awarded blue caps and Gateway restaurant players received shave ice certificates as the third place winners. In fourth place was the Grounds Department team.

Members of the winning team include Captain-Eric Beaver, Bobby Akoi, Napua Beaver, Harry Johnson, Maka Nihipali, Peter Johnson, Steve Kauai, and Siosifa Heimuli.

### Four perform

Four Center employees will be performing in the ASBYU-HC production of "You're A Good Man Charlie Brown," beginning October 10 and running until October 13. Directing the production is Nalani Redira who works in the canoe pageant, matinee show and night show. The musical comedy will feature a cast of six including three Center employees Brian Manoa of Reservations, Brian Bott of Foreign Guides and Annie Jensen from Village Operations.

## Visitors Write Letters

To whom it may concern,

On August 2nd we visited the Polynesian Cultural Center. One of the areas we visited was the "Samoan Village." The men doing the fire starting, coconut cracking and tree climbing were excellent. Everyone at the Center was nice but these people really stood out, they made the visit! We'd like to say thanks.

Sincerely,  
Larry Carlton

## Policies

We are happy to announce that we will continue to provide employees with uniforms, name tags and I.D. cards at no initial charge. However, due to rising costs, we will have to charge employees for replacement of lost cards, tags and uniforms.

### Reminder:

PCC employees wishing to park in BYU parking lots are welcome to do so if they purchase a BYU permit (this includes the lot adjacent to the Administration Building).

Those without stickers will be cited. According to BYU-Hawaii policy, after two uncited citations a vehicle may be towed away.

Parking permits may be purchased from the Campus Security Police Office.

### Missions:

Ken Niumatalolo-Ventura, California

Leslie Salanoa-Santiago, Chile

## 'Open Saturday'

All employees wishing to have a personal conference with General Manager Ralph Rodgers, may do so the first Saturday of each month. 'Open Saturday' is an opportunity for individual employees to meet with Ralph Rodgers by making appointments the first Saturday morning of the month. The next 'Open Saturday' will be October 6. Call ext. 3006 for appointments.

## "Extra Mile" Award



Rose Fa'oliu

Rose Fa'oliu has received the "Extra Mile" award for her outstanding work and cheerful attitude as Payroll Clerk in the Business Department.

According to Payroll Supervisor Francis Aki and Business Office Controller Les Steward, Rose often does more than her job description requires by going out of her way to assist the department secretaries and the Center employee's with their payroll needs. Her duties verifying and calculating time cards, inputting information and initiating checks, often demand immediate attention and a sensitive response to situations. Rose has been able to meet these demands with a cheerful attitude and a genuine willingness to help all those with payroll problems and needs.

Payroll week can be a very stressful period, and it often is. Time becomes a major factor, as deadlines approach; and Rose has proven to be an absolute expert in organizing every needful thing, and her efficiency shows. She gets the job done!...And not only that, but she gets your pay check to you on time. Rose is a definite plus to the Payroll Department.

Rose who has been working for 10 months says she enjoys trying to keep people happy and is grateful for the computer she has to help her with her work.