



Polynesian Cultural Center

# UPDATE '89

Employee Newsletter

Friday, September 29, 1989

## Education Update

### District Teachers of the Year Awarded

In a move to show continuing support for educational programs, the Polynesian Cultural Center supported the Department of Education District Teacher of the Year Award on September 19, 1989, at a luncheon which took place at the Ala Moana Hotel. Representing the Center was President Christensen, and Mike Foley.



*The seven teachers chosen by the Board of Education for their outstanding service.*

President Christensen gave a short speech during the luncheon at which he remembered a former teacher of his. He also remarked that he appreciated the service of these teachers because his own mother had been a teacher and had been nominated at the National Teacher of the Year from their state.

This is the fourth year that the Polynesian Cultural Center has awarded \$500.00 to each of the seven district teachers of the year. In addition, each of these teachers becomes eligible to the Department of Education State Teacher of the Year Award which will be awarded on October 5th, 1989.

Our congratulations to these fine teachers.

### **The seven teachers awarded were:**

|                      |                   |
|----------------------|-------------------|
| Kerry Chesser        | Windward District |
| Theodora Chong       | Leeward District  |
| Derek Inouye         | Hawaii District   |
| Shirley Ann Kimizuka | Maui District     |
| Alice Kotake         | Central District  |
| Theresa Sanger       | Honolulu District |
| April Shigemoto      | Kauai District    |

## Inside This Issue

- 26th Anniversary Schedule
- Employee Lunch Menu
- Korean Commercial  
Filmed at PCC
- MIS Calendar
- New Addition  
to Villages
- Logo Shop Prices

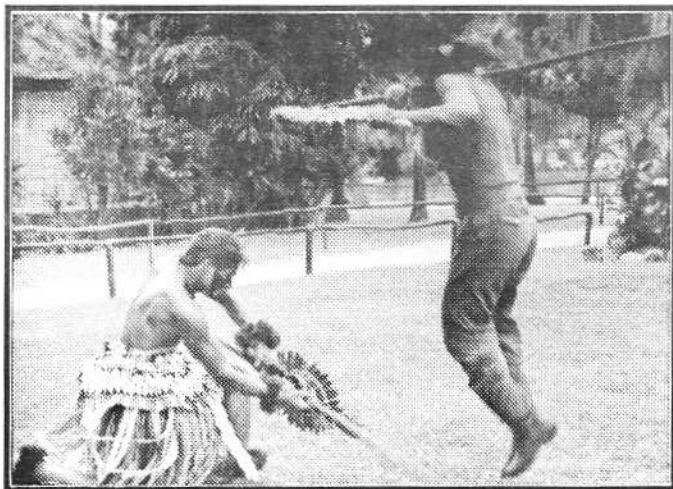


**Deadline for next UPDATE  
is Tuesday, Oct. 10, 1989**

## The Center Goes Hollywood Again Korean "Energy Drink" Commercial

On Wednesday, September 19, 1989, a Korean film crew came to the center with one of Korea's most famous film stars. Reportedly the "Bruce Lee" and "Harrison Ford" of Korea, **Han Il La**, came to the Center to shoot a commercial advertising a honey based energy drink (Similar to Gatorade).

Costarring with Han Il La here at the Center was Sina Purcell, Howard Jeremaiah, and Nauma Apelu. A series of high action scenes were shot to show how much energy you can have from drinking this drink. There was a fight scene in the Fijian Village, a Coconut Catching Scene in the Samoan Village, and an Outrigger Canoe scene shot at Waikiki Beach. The group coordinator from the Center was Scott Bradshaw and assisting from Marketing was Terry O'Rand. Our thanks to the many Promo team members and theater cast who also appear in the commercial.



**Korean Film Star Han Il La challenges  
Howard Jeremaiah in the Fijian Village**



**Sina Purcell shares a coconut  
with the star of the commercial.**

## Gateway Corner Employee Notes

### New Babies

Paree & Ryan Akana

8/29/89 Baby boy

7lbs. 8 1/2 oz.

Casey James Kahelemauna

### New Workers

Charmaine Sunn

Michiyo Koizumi

Carol Smith

Nicole Whitlock

Jennifer Bustian

Mele Tautuiaki

James Keddington

Michael Villanueva

Danielle Oram

Julie Gardner

Jeffrey Salley

Jeffrey Sorenson

Chris Dalley

Peggy Coburn

Manu Moe

Maile Iloa

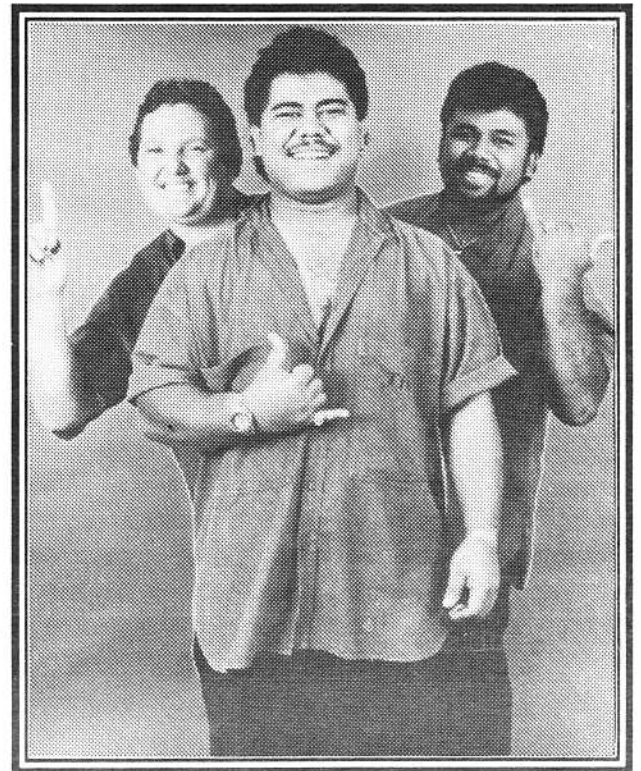
### September Birthdays

Charmaine Dunn Sept. 1

Stormy Fonoimoana Sept. 27

# The Polynesian Cultural Center Announces its 26th Anniversary Celebration

## Featuring **Kapena**



### Friday, October 13

9:00 A.M. - 4:00 P.M.

#### **EMPLOYEES ONLY**

Pick up one free anniversary T-shirt from Special Projects at the Administration bldg. and enjoy a piece of birthday cake too!

### Saturday, October 14

9:30 P.M.

**DOOR PRIZE DRAWING** - At the Pacific Pavilion. All PCC employees eligible for all door prizes which include: Outer-Island trips, hotel packages, Waikiki dinner/show tickets and many more. Make sure you have your ticket. Pick up tickets from Special Projects.

10:00 P.M.

**KAPENA CONCERT** - The Pacific Pavilion comes alive to the sounds of Kapena.

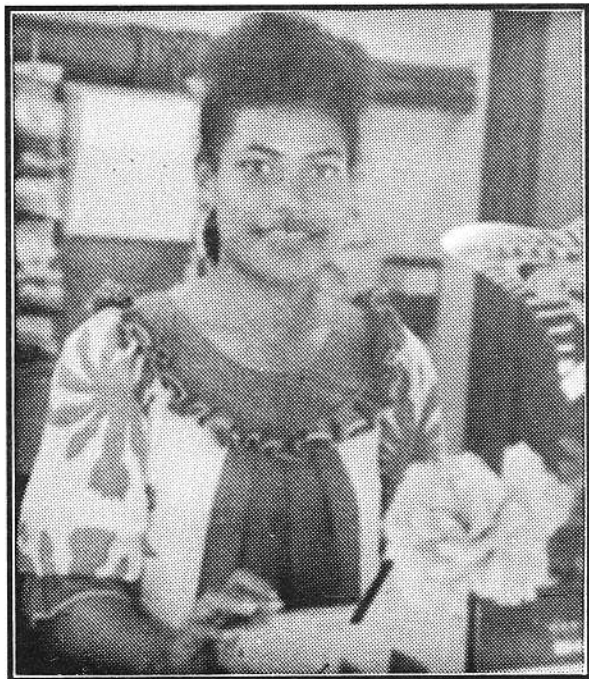
No children are allowed.

**PCC Employees ONLY** may pick up two (2) tickets from Special Projects. Prices to be determined by October 6th.

**DOOR PRIZES** - Remember to get your tickets between Oct. 9 - Oct 13, from Special Projects for the door prize drawing, which will be held 30 minutes before the Kapena concert on Sat., Oct. 14, 1989. **Must have ticket to win.**



## Concessions Corner Who's Who Corner



Concessions would like make mention of **Manuvainga Sateki**, as one of their Outstanding Achievers.

Manu works with the concessions department at the Tahiti Canoe Landing ship since July. She has been here in Hawaii since June.

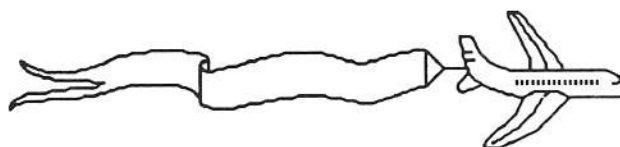
Manu is from the "friendly islands" of Tonga. She previously served a full-time mission there also. After serving her mission, Manu chose to attend BYU-Hawaii. As a freshman, she is pursuing her goal as a Math major. Interestingly enough, Manu loves to read in her spare time.

You will have to watch for a long time if you want to even try to catch her not smiling. She is a very happy and a friendly person. At home in Vava'u she has six sisters and three brothers. Malo 'Aupito Manu for all your hard work and friendly manner.

## Special Projects Update HOT New Item

Special Projects now has **Interisland Flight discount coupons** for only \$32.50 (Cash Only). Purchased elsewhere locally these coupons sell for \$37.00. These coupons are good on any flight. No expiration date. Great gift idea.

**For PCC employees only.**



## New Addition Village Medicine Hut

The Medicine Hut is a new addition built in the Village Auxiliaries area of the Villages. It is located between Tonga and the Foodstand. The sign reads: Medicine Hut - Uses of Herbs and Plants in Polynesia.



**Elizabeth Sika tells guests about Polynesian Medicine at the New Medicine Stand**

Center guests in the past two weeks have found themselves learning about cures and treatments that the Polynesians practiced using herbs and plants found in their island environments. Some interesting medicinal practices described by the medicine hut employees are:

- 1) Using cowry shells and glassy smooth stones for massage.
- 2) Chewing chunks of Kava root to relieve headaches, stress, or insomnia.
- 3) Squeezing the juice of fresh sweet potatoes and gargling it for sore throats.
- 4) Using breast milk as eye drops to cure mucous infections.
- 5) Using mashed candlebush leaves to cure ringworm.
- 6) Applying urine to jellyfish stings to eliminate stinging and pain.
- 7) Making a tea from the true kamani tree to stop coughs.

**DAKOTA SHOP**  
EMPLOYEE STORE

**T-SHIRTS - \$10.00  
and under**


**SHORTS - \$7.00  
and under**

**WATCHES - \$20.00**

**Other Odds and Ends  
\$10.00 and under  
(Hats, Bags, Stuffed  
Animals, Address Books, etc.)**

**\*ALSO - Consolidated Movie Tickets  
sold for \$3.50**

**\* Grand Opening to be in October with new  
merchandise, prizes, etc.**



## **Theater Corner** **Keiki Fashion Show**

For the past 5 years our guests have been delightfully entertained by a "small" group of performers at the Gazebo area at 6:00 o'clock every evening known as the Keiki Fashion Show.

The youngest of our performers ages range from 6 through 12 years old. Of their responsibilities can almost dance as well as our night show performers showing off their skills in twirling the poi balls, and the taiaha, or doing the hula or taulunga, or even dancing the fast-paced aparima.

Many of the keiki dancers also take part outside of work in competitions. Our dancers are known in Tahitian dancing and Hula state-wide as some of the best.

Of the recent Keiki Hula competitions held this past August in Honolulu, our own Kahoku Kamakeeaina placed 4th in the boy's solo hula. Other participants from the Napuananionapalionaakoolau Hula Halau who are also employed here at the Center were: Sarah Bridges, Joseph Alisa, Tali Alisa, and Yukie Kekaouha (former Keiki Fashion show employee).

Our very special thanks to the parents of our other Keikis who support the talents of these great kids. Mahalo also to the ever-so-patient narrators who "daily endure". . . Tanx Nancy, Aderu, Grace, David, and Jodie!



*Taurua Era Mariteragi  
"Mama"*

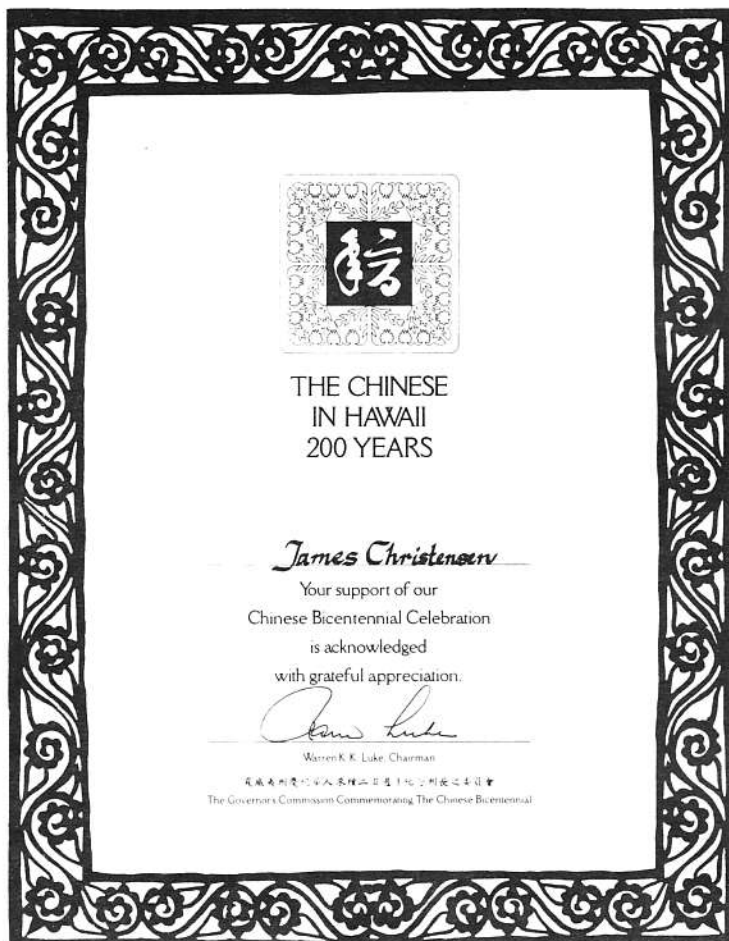
## **Village Spotlight**

One of the Center's "Living Treasures" is Tahiti's own, Taurua Era Mariteragi. She was born and raised on the island of Niau, Tuamotu's, French Polynesia. Whe Taurua was growing up there were only about 300-400 people living on her island. As the years went by the population has dwindled to half.

Mama Taurua as she is known in the Tahitian Village, speaks both the Tahitian dialect, Tuamotu dialect, and of course French which she learned at age 9 when she was taken to the island of Tahiti for her schooling. We are fortunate that she is here at the Center teaching the younger generation how to play and sing Tahitian Music. She is a self-taught musician, having learned music by singing in church when she was a little girl.

Her family came to Hawaii in 1973 when her husband was assigned to supervise the Tahitian village for two and a half years. Currently Mama is blessed with 10 children and 35 grandchildren.

Mama has worked as a seamstress right after her husband was released from the village. In 1982 she was transferred back to the village as a cultural leader. She is looking forward to the year 1992 when she can sit back and relax to enjoy her retirement years. We salute Mama Taurua for the role model she represents for the younger generation.



## Corporate Update Chinese Award

President Christensen, in behalf of the Center, received an award from the Governor's Commission Commemorating the Chinese Bicentennial in Hawaii. This award was given to the Center due the many projects that we have been or are currently in involving the Chinese. Recently, we were hosts to the crew from the Chinese ship, "Zheng He", as she made her first American port visit. The center is also involved in bringing students from the People's Republic here to complete one year of training with the Center. This award was presented at celebration in conjunction with the Chinese in Hawaii 200 Years celebration.

## Village Corner New Afternoon Show

To replace the 1:00 Canoe Pageant, the Villages have started doing a 40 minute show called the Fiafia. This show takes place in the Samoan Village and involves all of the village workers. Highlights of the show include a village procession, a welcome by each chief, and various competitions and dances from the villages. The show is coordinated by Pulefano Galea'i, Village Manager. This is a fun way to open the villages. If you get a chance to be there, you are guaranteed to have a great time. Here are some highlights:



Nauma Sounds the Lali



Coconut Climbing Contest?



Noa Fale Wins Weaving



## **Editor's Corner** **UPDATE** **Headaches**

Getting this publication out is not picnic!

If we print jokes, people say we are silly.  
If we don't, they say we are too serious.

If we stick close to the office all day,  
we ought to be around hunting for material.

If we get out and try to hustle,  
we ought to be on the job in the office.

If we don't print contributions,  
we don't appreciate genius.

And if we do print them,  
the paper is full of junk!

If we edit the other fellow's stuff,  
we're too critical.

If we don't, we're asleep.

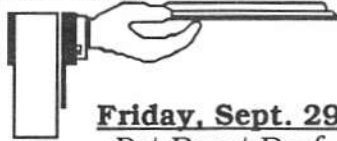
If we clip things from other magazines,  
we are too lazy to write them ourselves.

Now, like as not, somebody will say we copied this from some magazine.

**We did!**



## **EMPLOYEE MENU**



### **Friday, Sept. 29**

Pot Roast Beef  
w/ Gravy  
Steamed Rice  
Mashed Potatoes  
Postachio Salad  
Cold Drink

### **Monday, Oct. 2**

Beef Curry Stew  
Steamed Rice  
Tossed Salad  
Cold Drink

### **Tuesday, Oct. 3**

BBQ Chicken  
w/Sauce  
Steamed Rice  
Seasoned Corn  
Cold Drink

### **Wednesday, Oct. 4**

Roast Beef  
w/Gravy  
Steamed Rice  
Mashed Potato  
Calif. Mixed Veg.  
Cold Drink

### **Thursday, Oct. 5**

Sweet-n-Sour  
Spareribs  
Steamed Rice  
Peas & Carrots  
Cold Drink

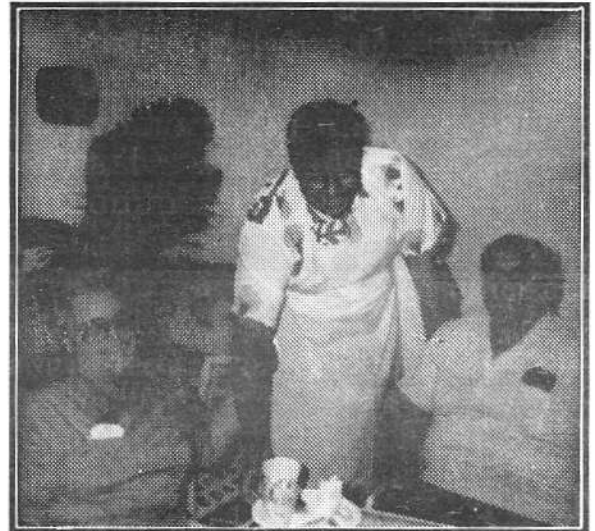
### **Friday, Oct. 6**

Deep Fried Chicken  
w/Gravy  
Mixed Vegetables  
Steamed Rice  
Cold Drink

**\*\* This menu is subject to change without prior notice.**

## **Employee Spotlight** **Employees** **Applaud** **Sam Langi Jr.**

Center employees have been praising service extended to them by "Young Sam" at the Employee Lounge and Lunch Room. Unused to the courteous service Sam has been giving them, fellow employees have reacted with everything from silent stares, and smiling unbelief, to repeated expressions of gratitude.



Keith Awai, of the Hawaiian Village (who prompted the article), says: "Sam is proof that sharing the Aloha Spirit is certainly worthwhile. All of us who eat regularly in the lunchroom are appreciative of his service and hospitality."

Mildred Cashman, Employee Lounge Supervisor adds that she has also received many positive comments about Sam.

The UPDATE congratulates Sam for the contribution he makes in brightening coworkers days. Mahalo for your fine work and example

# October MIS Training

| Sunday | Monday | Tuesday   | Wednesday | Thursday                   | Friday        | Saturday |
|--------|--------|---|-----------|----------------------------|---------------|----------|
| 1      | 2      | Symphony<br>Introductory Course<br>9-11 am<br>3                                   | 4         | 5                          | 6             | 7        |
| 8      | 9      | Symphony<br>Int-Adv Course<br>9-11 am<br>10                                       | 11        | PCC 26th Anniversary<br>12 | Pay Day<br>13 | 14       |
| 15     | 16     | Ulticalc (Mainframe<br>Spreadsheet)/<br>Lotus 1-2-3<br>Intro Course 9-11 am<br>17 | 18        | 19                         | 20            | 21       |
| 22     | 23     | Ready, Set, Go!<br>(Mac) /<br>SideKick<br>Intro 9-10 am<br>24                     | 25        | 26                         | Pay Day<br>27 | 28       |
| 29     | 30     | HALLOWEEN!<br>Training Open<br>31   |           |                            |               |          |

## COMPUTER USERS COMMITTEE

Welcome to our new CUC secretary Michelle Stinger of Guest Services. In case you missed our last meeting, here are a few items discussed:

**New Multi User System for Business Office and Personnel:** Users will be able to share programs, files, and peripherals. Corporate Administration will be able to access this system via modem. Installation projected for October.

### New PSI SW System

Users can now enter in their software and hardware requests online! They will also be able to periodically check the progress of these projects. Just enter "SW" at any menu.

## What Do You Use WordPerfect For?

Do you have any unique uses of WordPerfect besides just writing memos? (ie., Special Forms, Macros, Graphics) WordPerfect Magazine would like to write an article on the Center's use of their program.

Call Lei (ext. #3161) at MIS with your ideas.  
**You could be in WordPerfect Magazine!**

## Keyboard Cautions for PSI Users:

Some characters on your terminal keyboard are best left alone. Some of them are the [BREAK] key, any key marked [CONTROL],[CLEAR],[HOME], or [ERASE], and the four cursor keys (marked with arrows pointing in four directions).

The cursor control characters are very dangerous, as they actually insert invisible control characters into your data which will cause the printer to skip lines, pages, etc.

If you think you have inadvertently typed any of these characters (they may not be visible on your screen), you have two choices for removing them.

If you have not yet pushed the [RETURN] key, then you may backspace several times, thus erasing the invisible characters, and simply retype your data. If you have pressed the [RETURN] key, they you must go back to that field and re-enter the information.

## Diskettes For Sale

|      |                 |       |         |
|------|-----------------|-------|---------|
| (10) | 5.25" Diskettes | DD/DS | \$8.00  |
|      |                 | HD/DS | \$11.00 |
| (10) | 3.5" Diskettes  | DD/DS | \$15.00 |
|      |                 | HD/DS | \$26.00 |