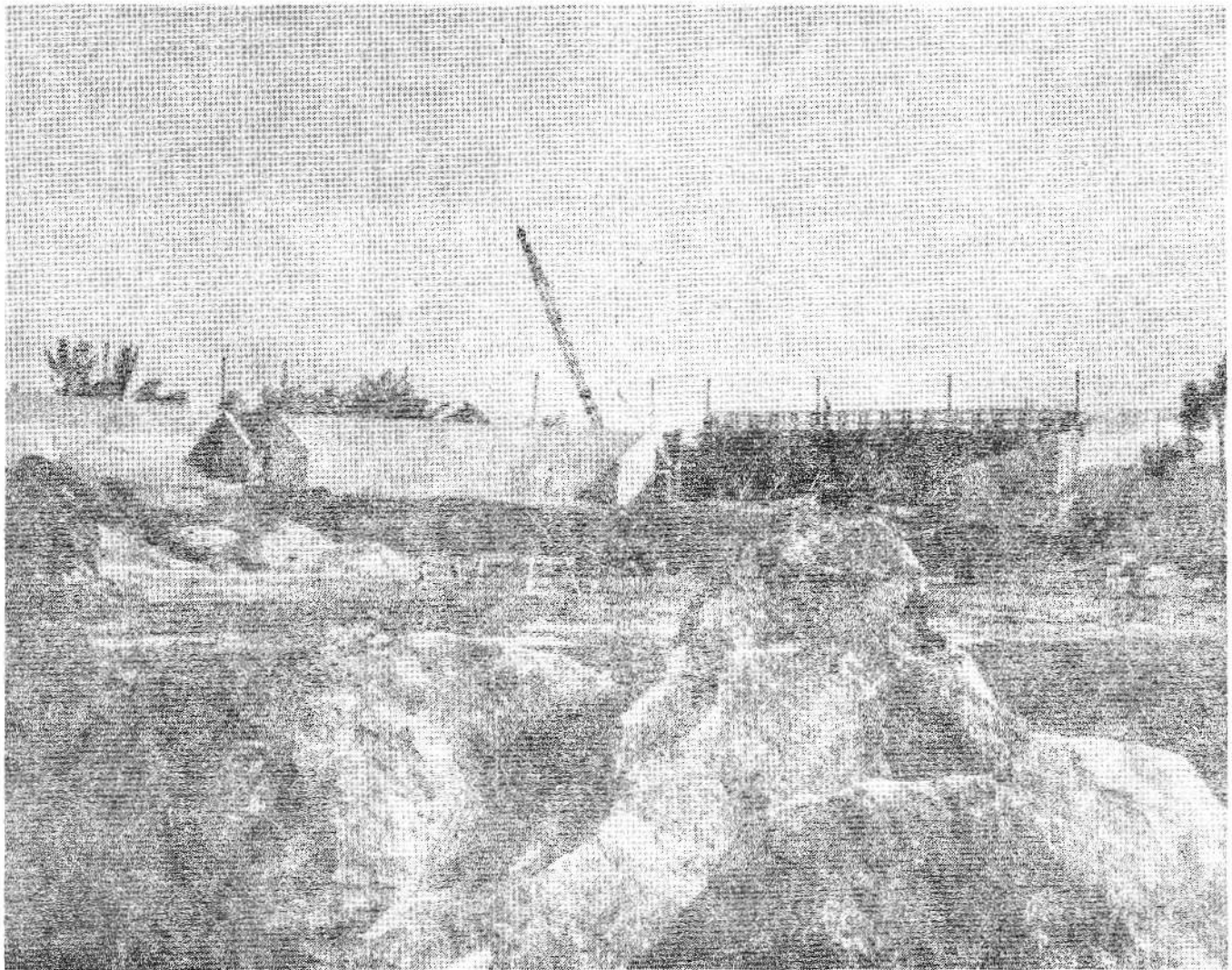


THE VILLAGER

EMPLOYEE NEWS SHEET OF THE POLYNESIAN CULTURAL CENTER

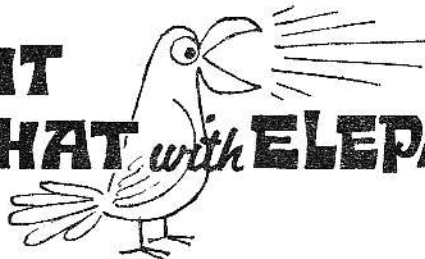


3 October 1975



*A Growing PCC celebrates its
12th Birthday (October 11)*

CHIT CHAT with ELEPAIO



"The Villager" is back in circulation. We were simply enjoying a vacation of sorts. You can look forward to "The Villager" each payday and we continue to encourage you to use this as a means of communication throughout the PCC. Anything newsworthy will be considered and followed up. Submit your news articles to the PCC Personnel Office. If you are aware of an event about to occur let us know and we'll track it down. You can help to make this a complete employee newsletter.

Membership cards are still available to the Walt Disney Magic Kingdom Club. If you plan to take a vacation trip to the mainland this fall you may find it to your advantage to pick up a membership card. See page 4 of this issue for more details.

The Creative Ideas and Kokua Awards programs are requesting your assistance in its revival. Both programs are essential to the PCC especially for employee morale. We need your ideas and recognition of employee performance to further encourage unity and cohesion.

Your I.D. Please?!

Do you have a PCC I.D. card? If not, you should stop by the Personnel Office and have one made. It doesn't take more than five minutes of your time. I.D. cards are made between the hours of 8:30am to 4:00pm, Monday to Friday.

Why do you need an I.D. card? For several reasons: (1) discount rates at the Curio Shop and Snack Bar, (2) 50% off theatre tickets, (3) discounts at the BYUH

bookstore if fulltime employee and most important (4) YOU WILL NOT BE ALLOWED TO ENTER THROUGH THE MAIN GATES WHEN COMING TO WORK.

Beginning October 15, 1975 and thereafter, all employees will be required to present their I.D. cards to security guards at the entrance gates. You will probably be detained or possibly not allowed to enter without showing a valid PCC I.D. card.

The Personnel Office will issue I.D. card replacements without charge to employees who have lost their original card between October 6 and 14.

MINIMUM WAGE UP

A new pay scale has been adopted by the management. Student positions are now categorized into students, assistant student supervisors and student supervisors. Pay rates will vary according to each category.

A cost of living allowance has been approved and will be given to all persons currently filling Non-Student positions. The new PCC minimum wage will be \$2.55 an hour in all departments except for minors 15 years old and below.

This wage policy becomes effective Sept. 29, 1975. Any questions regarding your status should be directed to your department manager or to the Personnel Office.

Vacation Pay Requests

The Payroll Office is asking that employees plan ahead for their vacation in order to receive a pay advance prior to leaving on vacation. An employee should request his vacation pay early enough so that it will be included in his regular pay check immediately before going on vacation.

For example: An employee plans to start vacation on Oct. 13, 1975. The regular pay day before that date is Oct. 3rd. The Payroll Office should have received the vacation pay request no later than Monday the week of Oct. 3rd to ensure that vacation pay will be included with the regular pay.

Employees should assure themselves that they actually have vacation time available by checking with Richard Peters of the Payroll Office before requesting advance vacation pay.

KOKUA AWARDS

Kokua nominations have dwindled to a precious few. The program is alive and well but it needs your support to exist. The objectives of the Kokua Awards is to encourage all employees to make an extra effort in helping a guest or a fellow employee. The extra time necessary to assist someone without thought of reward or compensation is worthy of recognition. Start a "Kokua Watch" in your section. Managers and supervisors are also eligible for nomination.

A kokua committee convenes once a month to review all nominations and cast their vote. Members for this committee are selected at random from each department. New members are appointed each month and are notified by Haunani of the Personnel Office. If you are interested in serving as a member of this committee let her know.

Creative Ideas

More Creative Ideas are needed. Unfortunately during the transition your ideas may have been misplaced. You should re-submit them by filling out the proper forms, place it in a sealed envelope and hand it to the main time-

keeper or to Dale Simpson who is now responsible for this program.

All ideas submitted will receive consideration by a selected committee and you will be notified regarding whatever action was decided upon.

Address your Ideas to Dale Simpson Data Processing Room, PCC Business Office.

PCC Anniversary Lunch

The PCC celebrates its 12th anniversary October 11, 1975. In observance of this occasion there will be a complimentary employee lunch on Friday October 10. Complimentary tickets will be issued to all employees for this luncheon and will be placed in the pay envelopes this week. Please do not lose these tickets as it will be collected by the cashier at the employee lunch area when you receive your lunch. Lost tickets will not be replaced since anyone will be able to use it.

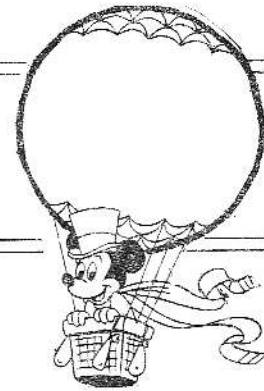
Lunch will be served between 11:00am and 4:00pm. Tickets will not be honored after these hours.

food for thought

The Hibiscus Buffet is featuring a new menu. Presently under the supervision of Greg Gargigan, the evening buffet includes Hawaiian Taro Bread, a delectable new treat; Ua Faave-laina is Samoan style baked sweet potato, taro or breadfruit topped with butter and brown sugar served piping hot. The popular Polynesian dishes of Tahiti and Samoa are once again on the menu--the delightful Tahitian Po'e and always delicious Samoan Palusami. A savory "Polynesian Beef Surprise" is new and different to the menu.

Pamper yourself! Take advantage of the employee discount and indulge in this real "Ono" buffet.

WALT DISNEY'S MAGIC KINGDOM CLUB®



EXPERIENCE DISNEYLAND!

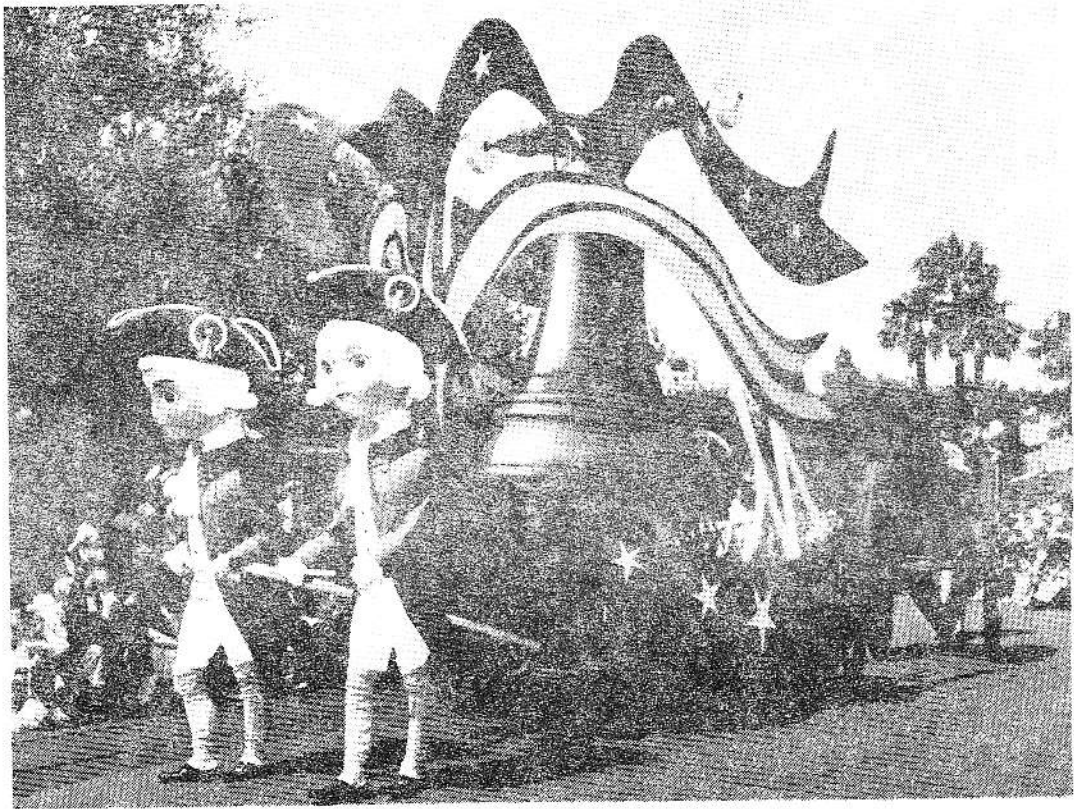
What is the Magic Kingdom Club you ask? It is a plan designed to give you greater values at Disney attractions than are offered to the general public. The Club operates year-round with special ticket book and travel package plans for Disneyland and Disney World offered exclusively to Magic Kingdom Club members. Greater values are available during the Fall/Winter/Spring months than during the peak summer months.

There is no charge for membership. One membership card is good for the entire family and valid for two years. Cards are issued upon request at the Personnel Office.

Other exclusive benefits of the Magic Kingdom Club include:

- 10% lodging discount at all participating Howard Johnson's Motor Lodges.
- Vacation adventures and special golf rates at Walt Disney World.
- Mini-vacations at the Disneyland Hotel.
- Travel programs to exciting destinations.
- Car rental discount with American International Rent-a-car.

When planning a vacation to the mainland anytime, see Merrell Cardejon for more details using your Magic Kingdom Club membership card.



© WALT DISNEY PRODUCTIONS

BICENTENNIAL SALUTE -- "America on Parade," Disneyland's salute to the nation's 200th birthday will be offered daily at the Park during the fall. Magic Kingdom Club members will be able to enjoy this and many other festivities at specially reduced prices throughout the season.