

# THE VILLAGER

EMPLOYEE NEWS SHEET OF THE POLYNESIAN CULTURAL CENTER



30 May 1975



*Pageant of the Long Canoes*

*1:00 and 3:30 pm daily*





## DID YOU KNOW...?

All employees who are required to use a time clock to punch in and punch out are required to obtain their supervisor's approval if they "write in" their own time instead of using the time clock. Please make sure your supervisor signs the card. In order for you to avoid wasting time locating your supervisor, always use the time clock when punching in or punching out.

The Payroll department will process time cards that are "written in" by employees who are required to use the time clock only if the time cards have the supervisor's signature of approval.

Memorial Day is a recognized PCC holiday. Employees working a minimum 30 hour per week who completed a probationary period of 90 consecutive working days are eligible to take this day off with compensation or arrange with your supervisor to take a day off within 30 days of the holiday.

All employees who were enrolled in the DMBA insurance plan as of December 31, 1974 received an annual statement of benefits today apprising them of their status as of that date. The information used to calculate the benefits outlined were submitted by the PCC Personnel Office per your application. If any corrections or changes are necessary please notify Tanya or Haunani at the Personnel Office.

## GUIDEPOST

The Reception area is working hard to extend a personal welcome to all guests. To help Oliana in maintaining this objective is Mereoni Ranadi and Pamela Fung who function as assistants to her in covering all areas encouraging the Aloha Greeters to do their best.

Something new in the Hospitality Operations is the giving away of small tokens made of coconut leaves to our guests. Expert weavers such as Toemu, Pisila, and Lucy take time to weave little birds, fishes, and other little items. They also invite all guests who want to get involved to join them and learn to weave. There are times when the girls have had several guests join them and they have a grand time together becoming acquainted. PCC is one of the few visitor attractions that allow visitors to join in and take an active part in the activities.



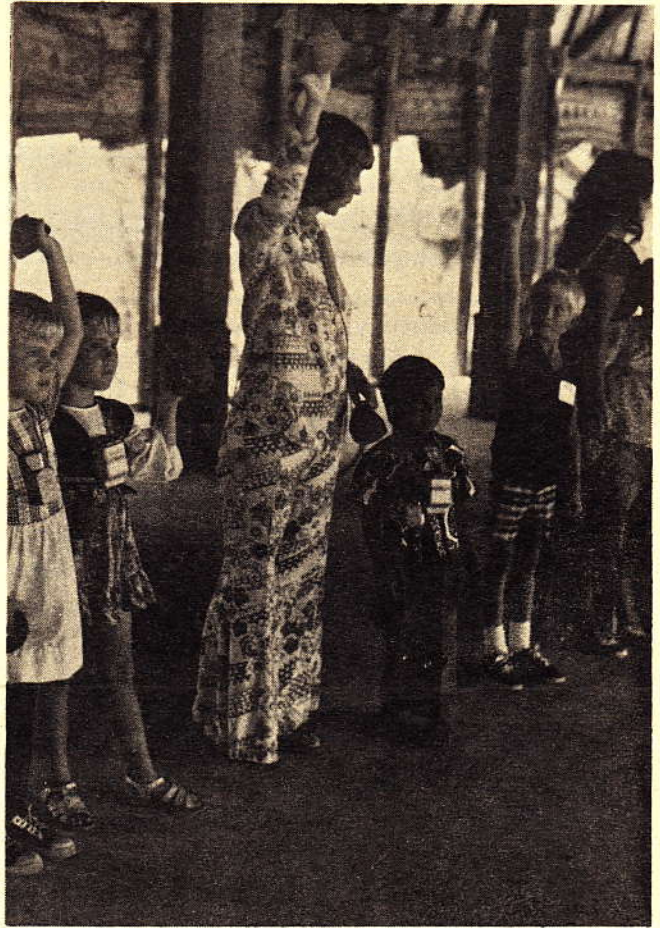
If you haven't seen the Pageant of the Long Canoes for sometime, do yourself a favor and go see it. A new sound has been added--that of the steel guitar played by Teaitu Mariteragi. The steel guitar was actually an idea of an old Laie resident many years ago. Visitors associate Hawaii with the lush sounds of a steel guitar. As you sit under the shade of the coconut palms, enjoying its magnificent reflection from the quiet serenity of the lagoon, let the lush and poignant reverberation of the steel guitar envelop your senses, whisking you off to ports of paradise. For thirty minutes, if you allow yourself the luxury, you will be far removed from the hectic pace of modern day. And after the exciting songs and dances are over, the hushed tone of the steel guitar is no longer heard. The noisy activity of people, the announcement to begin tours, the questions directed to you by disoriented guests brings you abruptly back to the present. You will remember this as a time well-spent. Allow yourself this luxurious experience anytime during the week at 1:00 p.m. or 3:30 pm. daily.

Be it known by all who read this, the PCC Boxoffice and Reservations office will now be officially referred to as the Laie Reservations Office.





Work can be fun!



Extra special guests--children from Hawaii school for Deaf and Blind



Employees play as hard as they work!



PCC employees at their favorite pastime.



WALT DISNEY'S  
**MAGIC KINGDOM CLUB®**  
**TRAVEL CENTER**

Exclusively Presents:

NEW BENEFIT FOR MAGIC  
 KINGDOM CLUB MEMBERS

In conjunction with American International Rent-a-Car being named the official car rental company of WALT DISNEY WORLD, the Magic Kingdom Club announces an exciting new benefit for Club Members nationwide.

Effective immediately, and running through September 1976, American International offers all Magic Kingdom Club Members a Ford Granada (or equivalent size car) for the special MKC Bicentennial rate of \$17.76 per day, with unlimited mileage. On other size cars, Magic Kingdom Club Members are now eligible for a 10% discount on published time and mileage car rental rates at all 250 American International locations nationwide. This discount is not applicable to commissionable, promotional, or unlimited mileage rates, and membership card **MUST** be presented at time of rental. Advance reservations may be made by notifying Chuck McCutcheon, Ext 137.

Featuring rates considerably lower than other car rental firms for equivalent cars, American International, started in 1969, has become the fifth largest car rental system in the nation. This newest Magic Kingdom Club benefit represents another great value and service for Club Members!

**IMMUNIZATION SURVEY**

In conjunction with the Public Health Service, the Center would like to have an immunization clinic for all employees and their dependents at low cost. Before this program can be initiated we need to know whether the employees will be interested in this service. Please complete the bottom questionnaire and return to the Personnel Office.

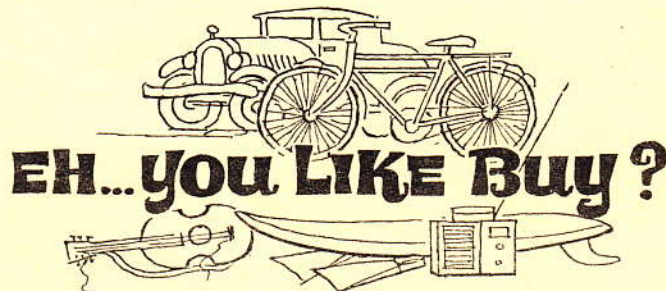
Interested?  Yes  No

**Job Opportunities**

Security Guards	Parttime
Salesclerk	Parttime
Cart Maintainer	Parttime
Tram Custodian	On Call
Service Attendant	Parttime

"I suppose", said the man to the boy applying for a job, 'you have a host of schemes and employments of your own that will be a great deal more important than anything here. You are interested in ball games and... ' The boy replied promptly, 'Yes, sir, I like ball first-rate: and I play it for all I'm worth. But when I am here, I'll be all here. I ain't big enough to divide. '"

Moody Monthly



The Curio Shop is featuring a Father's Day Special sale beginning June 2, to June 14, 1975. A 40% discount will be offered only on aloha shirts and jewelry that retails for \$3.00 or more. Employees will be required to show their PCC I.D. cards and all purchases must be made before 5:30 p.m.

**SATELLITE CITY HALL**

Hauula will soon have its own satellite City Hall which will be located across the post office at the Hauula Shopping Center. Mr. David Mau, satellite director said the opening date should not be later than July 1, 1975.

Licensing for motor vehicles, bicycles, and dogs, will be one of its function, besides issuing camping permits and handling voter registration. Information and complaints regarding city and county services and ordinances may be directed to them. Residents are encouraged to use this facility to fullest advantage.